

NEW MADE REBURN

Christopher
RÆBURN

Spring/Summer 2018
ÆOLUS



christopherræburn.co.uk

SS 18 ÆOLUS

With innovative design and sustainable intelligence at the core of the brand, this season Christopher RÆBURN's **REMADE** ethos is further emphasised through the use of truly unique and pioneering materials including pre-flown kites in collaboration with EXKITE. With a shared passion for performance, the collaboration sees Ræburn experiment and innovate by deconstructing pre-flown kites and then intelligently reconstructing them into extraordinary macs, anoraks and jersey: each piece lovingly crafted in our East London Remade studio and underpinned with authentic detailing and considered thinking.

Other **REMADE** highlights include German wind ponchos made from cooling cotton, reworked into lightweight contemporary parkas offering protection from the sun. As an evolution of last season's CUT N' SHUT process of deconstruction and reconstruction, a patchwork of desert camouflage patterns including chocolate-chip and tropentarn is reworked into a reversible bomber and parka. Finally, authentic 1940s battledress denim jackets are reworked to create a field jacket and an anorak.

Tulle, a netting fabric inherently lightweight, is reworked to

For SS18, Christopher RÆBURN takes inspiration from 'The Long Walk' by Slavomir Rawicz; an epic story of adventure and survival tracing a 4000-mile journey from Siberia to India traversing the Gobi Desert to the rocky extremes of the Himalaya's. The collection brings both **menswear** and **womenswear** together to evoke the spirit of adventure and reflect on a myriad of weather conditions, notably desert wind and sun.

create a unique track top, hoodie, crew, short and jogger: accentuating the notion of movement and wind. Tape has been developed with elevated branding to further emphasise the 4 R's (**REMADE**, **REDUCED**, **RECYCLED**, RÆBURN) and is used across unisex tulle, parachute and outerwear pieces.

Every season, Ræburn introduces a new mascot and in keeping with the seasonal theme, the jerboa, a hopping desert rodent makes an appearance, emblazoned across jersey and knitwear. Part of Christopher RÆBURN's **REDUCED** initiative; core jersey pieces include crews and hoodies made from organic cotton, and with Ræburn's signature grosgrain tape detailing.

SS18 sees the introduction of a new collaboration with footwear brand Palladium. In keeping with the spirit of adventure, the two brands have worked closely together to explore a series of functional and innovative footwear. Constructed using high quality sustainable materials including recycled rubber, recycled PET coated leather and organic cotton, the shoes replicate the advanced performance qualities visible throughout the collection. True innovation comes in the form of a three-way layering system

meaning the shoes can be worn as sandals or boots with removable knitted or waterproof socks, each bringing a different function for the wearer.

Other developments include a new collaboration with high quality minimalist watch brand Instrmnt. Part of Christopher RÆBURN's **REDUCED** initiative, the two brands have worked closely to reduce the footprint of the watch without comprising on quality or materiality: the finest Swiss-made parts have been combined with a locally sourced strap and recycled packaging to create a unique limited edition piece fitting of Christopher RÆBURN and Instrmnt's shared ethos.

The long-term Avery Dennison RBIS collaboration continues to deliver new and innovative embellishments, with Agility® Heat Transfers and 3D printed raised silicone patches for Christopher RÆBURN branding throughout the jersey and outerwear pieces.

Continuing on the success of past collaborations, Christopher RÆBURN and local denim maker Blackhorse Lane Ateliers have worked closely together on a high quality organic denim jean and shorts individually numbered with **REMADE** pocket detailing.









SS18 - CRU1029-R / Oversized Remade Cotton Parka
SS18 - CRU1025-R / Remade Kite Mesh Bomber
SS18 - CRU4018-R / Remade Kite Hoodie
SS18 - CRM2015 / Jersey and Kite Joggers



SS18 - CRW1032-R / Remade Kite Mac
SS18 - CRU4004 / Jersey Mix Hoodie
SS18 - CRM2012-R / Remade Jersey and Kite Jogger Shorts



SS18 - CRU1026-R / Remade Kite Mesh Anorak
SS18 - CRM2012-R / Remade Jersey and Kite Jogger Shorts



SS18 - CRW4034 / Kite Wrap Dress



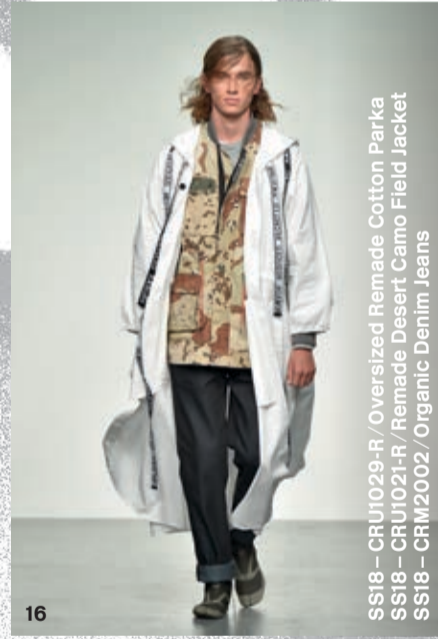
SS18 - CRU4004 / Jersey Mix Hoodie
SS18 - CRM2009 / Jersey Mix Jogger Shorts
SS18 - CRU6004 / Tulle Bucket Hat



SS18 - CRU1029-R / Oversized Remade Cotton Parka
SS18 - CRU1023-R / Remade Battledress Denim Anorak
SS18 - CRM2021-R / Remade Battledress Denim Shorts



SS18 - CRU1024-R / Remade Battledress Denim Field Jacket
SS18 - CRM2005 / Jersey Mix Jogger Shorts
SS18 - CRU7006-R / Remade Reversible Tote Bag



SS18 - CRU1029-R / Oversized Remade Cotton Parka
SS18 - CRU1021-R / Remade Desert Camo Field Jacket
SS18 - CRM2002 / Organic Denim Jeans



SS18 - CRW4039 / Parachute and Tulle Dress
SS18 - CRU2013 / Tulle Layer Shorts



SS18 - CRU1015 / Spaces Mesh Reversible Bomber
SS18 - CRU4016 / Tulle 4 R's T-Shirt
SS18 - CRU4026 / Space all T-Shirt
SS18 - CRM2016-R / Remade Parachute Jogger Shorts



SS18 - CRW4032-R / Remade Parachute and Tulle Top
SS18 - CRW2019 / Tulle Layer Trousers



SS18 - CRM6000 / Jerboa Knit Crew
SS18 - CRU4016 / Tulle 4 R's T-Shirt
SS18 - CRU2013 / Tulle Layer Shorts



SS18 - CRW1033 / Tulle Oversized Parka
SS18 - CRU1016 / Tulle Layer Shorts
SS18 - CRM4032-R / Remade Parachute and Tulle Top
SS18 - CRU6004 / Tulle Bucket Hat

Christopher
RÆBURN

NEWS

COLLABORATIONS

THE REMADE
STUDIO

A COLLABORATIVE,
CREATIVE STUDIO
WHERE DAILY DESIGN
MEETS PAINSTAKING
PRODUCTION,
ALONGSIDE MONTHLY
EVENTS, DISCUSSIONS
AND WORKSHOPS.

COLLABORATIONS

Another key component of the brand's approach to design is that of collaboration. Today, the brand works with partners around the world, reimagining existing designs, championing innovation and drawing a growing network of collaborators into the creative world of Christopher RÆBURN.



→ PALLADIUM

SS18 sees the introduction of a new footwear collaboration with global brand Palladium. Consisting of three distinctive styles, the two brands have worked closely together to explore a series of functional and innovative footwear constructed using high quality sustainable materials including recycled rubber, recycled PET coated leather and organic cotton.



→ INSTRMNT

A new development this season sees Christopher RÆBURN collaborate with high quality minimalist watch brand Instrmnt to produce a limited edition watch

with a bespoke escape map dial and recycled packaging. The watch is designed to be assembled by the wearer and comes with a choice of a grey or blue strap.



→ EXKITE

With a shared passion for performance, the Christopher RÆBURN × EXKITE collaboration sees Ræburn experiment and innovate by deconstructing pre-flown kites and then intelligently reconstructing them into contemporary pieces.

“I have lived a life facing wild oceans and strong winds. I have soaked up memories and breathless moments. I am now redesigned to fly again with someone special.”

THE REMADE STUDIO

The new REMADE studio in Hackney, London is poignantly located in what used to be the Burberry archive where the likes of Shackleton's exhibition material were stored and having commissioned a new bespoke fit-out allows for the REMADE Atelier, Archive, Showroom and offices in one open plan floorspace. A collaborative, creative studio where daily design meets painstaking production, alongside monthly events, discussions and workshops.



→ WORKSHOPS

The REMADE Studio is increasingly used as a platform to host a wide variety of workshops from open studio days for the local community to more advanced workshops where attendees are invited to design and customise their own tote bags using off-cuts from the atelier.

→ ANIMAL WORKSHOPS

The #OFFCUTANIMALS workshops are a series of monthly workshops where attendees are invited to make their own animal choosing their own fabric combinations using off-cuts and working alongside Christopher and his talented team to create something completely unique.



Christopher RÆBURN
 Studio 1
 The Textile Building
 29a Chatham Place, Hackney
 London E9 6NY
 +44 (0) 208 510 9689

studio@christopherraeburn.co.uk
 www.christopherraeburn.co.uk

FOLLOW US

Facebook @StudioRaeburn
 Instagram @ChristopherRaeburn
 Twitter @StudioRaeburn





SS18 - CR x Palladium / Diamond 1



SS18 - CRU6005-R / Remade Camo Mix Cap
SS18 - CRU6006-R / Remade Parachute Cap



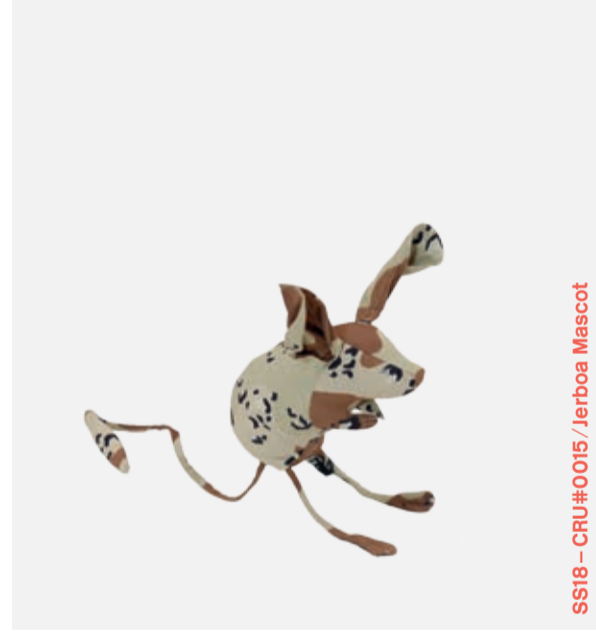
SS18 - CRU7006-R / Remade Reversible Tote Bag



SS18 - CRU7007-R / Remade Kite Rae Bag



SS18 - CR x Palladium / Diamond 2 Premium



SS18 - CRU#0015 / Jerboa Mascot



SS18 - CRU6001-R / Remade Parachute Bucket Hat
SS18 - CRU6002-R / Remade Jersey and Kite Bucket Hat
SS18 - CRU6000-R / Remade Reversible Camo Bucket Hat



SS18 - CRU7008-R / Remade Parachute Rae Bag



SS18 - CR x Palladium / Diamond 2



SS18 - CR x Instrmnt Watch



SS18 - CRU6004 / Tulle Bucket Hat
SS18 - CRU6003 / Jersey and Spacer Mix Bucket Hat



SS18 - CRU7009-R / Remade Kite Reversible Tote Bag







FOR INFORMATION ON BOOKING
APPOINTMENTS TO VIEW THE COLLECTION,
PLEASE CONTACT
TOMORROW SHOWROOM
 David Farrell
 davidf@tomorrowltd.com
 +44 (0)207 7497 719

FOR PRESS ENQUIRIES, PLEASE CONTACT
EXPOSURE
 Charley Greening
 charley.greening@exposure.net
 +44 (0)207 9077 197
 +44 (0)79 7372 7160

SHOES Palladium x Christopher Raeburn
CATWALK IMAGES Catwalking.com
STYLING Také Sato
CASTING Ben Grimes Casting
CAMPAIGN IMAGES Jean-Vincent Simonet
ART DIRECTION & GRAPHIC DESIGN
 Régis Tosetti & Simon Palmieri
PRINT Newspaper Club

MODELS Willow (Rebel); Finnlay, Freddie (Elite); Pavel (Nevs); Calum P, Xander (Models 1); Myles D (Supa); Clement C (Wilhelmina); Jacob C, Ana Arto (Storm); Callum (HMG); Zach Norton, Josef, Wonjung (AMCK); Charles, Wonil, Kit Butler, Julia Flemming, Lella Z (Next); Safil, Olamide (IMG); Freddie A (Premier); Jakub K (PRM); Naomi VK (Milk).

SPECIAL THANKS
 The British Fashion Council
 EXKITE
 Palladium
 Instrmnt

FOLLOW US
 @StudioRaeburn
 @ChristopherRaeburn
 @StudioRaeburn

SUPPORTED BY

EXKITE



INSTRMNT



REMADE REDUCED RECYCLED REBURN