

SARAWAK

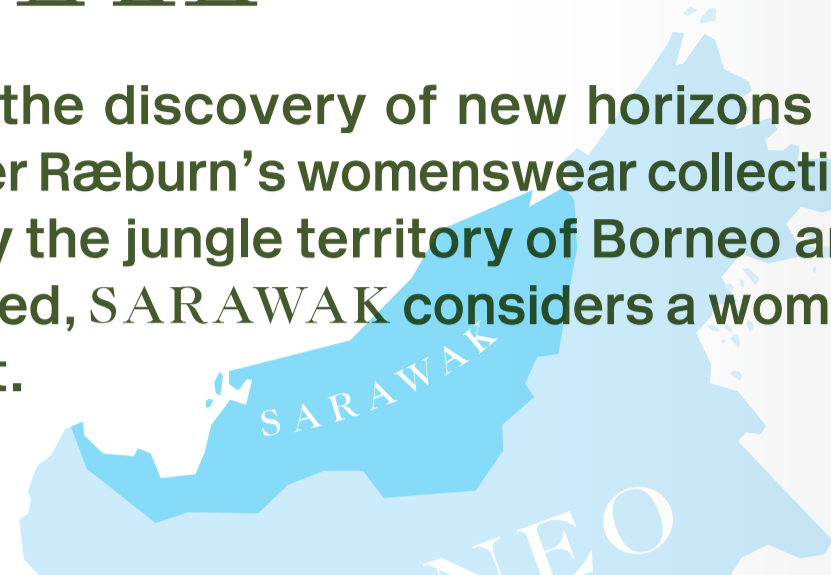
ing/Summer 2016

Christopher
RÆBURN



SARAWAK

A spirit of adventure, freedom and the discovery of new horizons lie at the heart of SARAWAK, Christopher Ræburn's womenswear collection for Spring/Summer 2016. Inspired by the jungle territory of Borneo and female explorers both real and imagined, SARAWAK considers a woman negotiating an unknown environment.



the distinctive outerwear the label has become known for, as well as new developments including a statement raw-edged dress. The classic parachute appears in olive and sky blue, reworked with mesh inserts into lightweight dresses and separates.

A fil-coupe Jacquard inspired by the pattern of the airbrake has been developed exclusively with Vanners, one of the few remaining silk mills in the UK. Naturally-dyed Habitoi silk is mixed with crinkle crêpe de chine to create featherlight dresses, skirts and tops while graphic flock heat transfer embellishment on cotton drill and jersey has been developed in collaboration with Avery Dennison RBIS.

Lightweight knitwear, developed as part of an upcoming bespoke knitwear collaboration with Knyttan, echoes both the mottled pattern of the natural dye and the collection's signature graphics.

Accessories include hand-tied jacquard bum-bags and the Christopher Ræburn leather animal bag — for SS16, an orangutan — the ultimate travel companion.

S
A
R
A
W
A
K

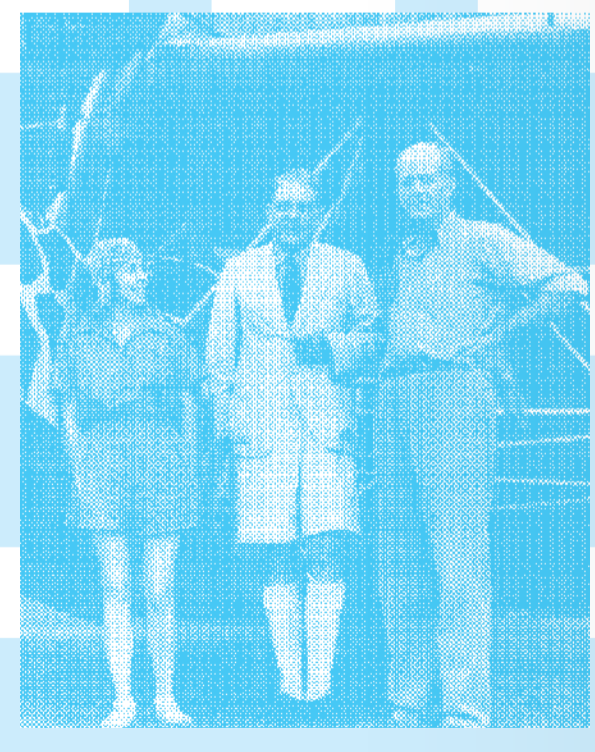
The utilitarian silhouettes, fabrics and elemental colour palette of the traditional adventurer are adapted through remade and reworked garments. A bold emphasis on dresses and skirts, uncovers an undone, unconstrained look that both reconciles and challenges ideas of masculine and feminine — the essence of the Christopher Ræburn womenswear label.

This narrative is captured in ready-to-wear, accessories and for the first time in footwear. Christopher Ræburn has teamed up with footwear experts Clarks in a unique collaboration that compliments the seasonal concept.

With fabric innovation and sustainability at the core of the brand, this season Christopher Ræburn re-imagines black and white airbrake parachutes (used to produce drag in aircraft landing) to create



Osa Johnson (1894–1953) and husband Martin Johnson (1884–1937) were American adventurers and documentary filmmakers.
© kellywright.com/2013/01/03/osa-johnsons-jungle
© airminned.net/silkorsky/borneosafari/s39borneo.html



SS16







SS16 - WPST / Panelled Silk T-Shirt
 SS16 - WRT / Remade Airbreak Trouser



SS16 - WRASD / Remade Airbreak Anorak
 SS16 - ALOBB / Leather Oversized Bumbag



SS16 - WNDK / Natural dye Knit
 SS16 - WRMS / Remade Airbreak Mini Skirt



SS16 - WWD / Wrap Dress
 SS16 - WAST / Remade Airbreak Sleeveless Top
 SS16 - WRT / Remade Airbreak Trousers



SS16 - WWT / Jersey Wrap Top
 SS16 - WRDD / Remade Airbreak Drawstring Dress



SS16 - WRK / Ribbon Knit Crew
 SS16 - WRBS / Remade Airbreak Boxer Short



SS16 - WLMAC / Cape
 SS16 - WMV / Remade Mesh Vest



SS16 - WLMAC / Lightweight Belted Mac
 SS16 - WSSD / Sleeveless Cotton Shirt Dress
 SS16 - AFOBB / Fabric Oversized Bumbag



SS16 - WJMAC / Jaquard Belted Mac



SS16 - WPSPD / Panelled Sleeveless Dress



SS16 - WSWD / Silk Wrap Dress
 SS16 - WWT / Mesh Zip Top
 SS16 - WWV / Remade Mesh Vest



SS16 - WMD / Remade Mesh Dress
 SS16 - ALBB / Leather Bumbag
 SS16 - WPLS / Panelled Long Skirt



SS16 - WRWT / Remade Airbreak Wrap Top
 SS16 - WPTD / Panelled T-Shirt Dress
 SS16 - WBS / Boxer Short



SS16 - WJWT / Jaquard Wrap Top
 SS16 - WRALS / Remade Airbreak Long Skirt



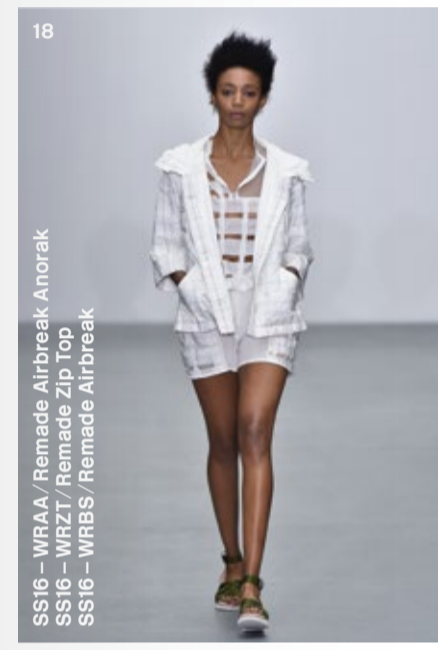
SS16 - WRWT / Remade Airbreak Wrap Top
 SS16 - WRALS / Remade Airbreak Long Skirt



SS16 - WRWD / Remade Airbreak Wrap Dress



SS16 - WSMZT / Mesh Sleeveless Zip Top
 SS16 - WRASS / Remade Airbreak Short Skirt



SS16 - WRAA / Remade Airbreak Anorak
 SS16 - WRZT / Remade Zip Top
 SS16 - WRBS / Remade Airbreak



SS16 - WFI / Field Jacket
 SS16 - WMV / Remade Mesh Vest
 SS16 - WPS / Pleat shorts



SS16 - WCI / Cropped Jacket
 SS16 - WMV / Remade Mesh Vest
 SS16 - WSS / Side Split Skirt



SS16 - WSD / Cotton shirt Dress



SS16 - WRPSD / Remade Parachute Sleeveless Dress



SS16 - WRPSD / Remade Parachute Sleeveless Dress



SS16 - WRSA / Remade Parachute Single Layer Anorak
 SS16 - WPLS / Remade Parachute Long Skirt

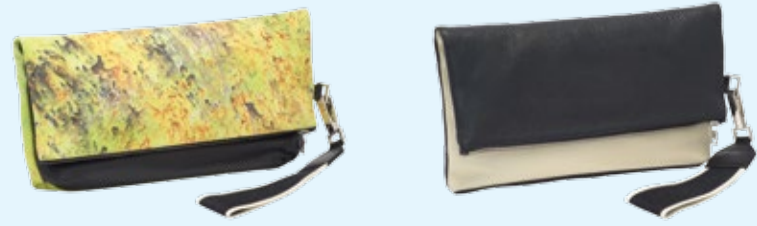


SS16 - WRDA / Remade Parachute Double Layer Anorak
 SS16 - WRBS / Remade Parachute Boxer short



SS16 - WMZT / Mesh Zip Top
 SS16 - WRPSS / Remade Parachute Short

SS16 - AC / Fold-Over Clutch



SS16 - ALOBB / Leather Oversized Bumbag



SS16 - ALBB / Leather Bumbag



SS16 - AP / I-Pad Pouch



SS16 - AFOBB / Fabric Oversized Bumbag



SS16 - AOT / Orangutang Toy



SS16 - ALCP / Leather Compact Rucksack



SS16 - AOR / Orangutan Bag



SS16 - AHARE / Hare Bag



SS16 - ADOG / Mutt Bag



SS16 - ALOR / Large Orangutan Rucksack



SS16 - ALHARE / Large Hare Rucksack





For information on booking appointments to view the collection, please contact:
TOMORROW SHOWROOM Tim Sturmheit
 tim@tomorrowltd.com
 +44 (0) 20 7033 7710

For press enquiries, please contact:
EXPOSURE Ruth Flanagan
 ruth.flanagan@exposure.net
 +44 (0) 20 7307 7323

Art Direction / Graphic Design ... Régis Tosetti & Simon Palmieri
 Catwalk images Catwalking.com
 Campaign images Kerry Dean
 Accessories images Sam Scott-Hunter
 Styling Emma Wyman
 Casting Ben Grimes
 Models Marine, Jialin (Models 1) / Annie (Milk)
 Saadi (The Hive) / Ivana T (The Hive) / Kid P (FM)
 Niina, Marta (IMG) / Hannah S, Ksenia (Select)
 Ellie T (Premier) / Annika (Next) / Mily (Supa)
 Special Thanks Emma Wyman
 Print Andrew Brogan – Henstead Exotic Garden
 Newspaper Club

→ FOLLOW US
 Facebook Christopher-Raeburn
 Instagram @StudioRaeburn
 Twitter @StudioRaeburn

Supported by:



SS16

