

Womenswear Collection

Grey

S | M | L



Womenswear Collection



1 SS12 – WSBOM / Swiss Bomber

Womenswear Collection

Navy blue

S | M | L



SS12 – WSAIL / Sailor Jacket

Womenswear Collection

Red / Red Tape / Olive
Blue / Blue Tape / Olive
Yellow / Yellow Tape / Olive
Watermelon / Red Tape / Olive
Green / Green Tape / Olive
Black / Black Tape / Olive

S | M | L



A

B



A → SS12 – WPOP / Pop-Out Parka

B → SS12 – WZG / Pop-Out Parka Inner

Womenswear Collection

Black/Black Tape
Grey/Grey Tape

S | M | L



SS12 – WKIM/Waxed Cotton Kimono Coat

Womenswear Collection

Black/Black Tape
Grey/Grey Tape

S | M | L



SS12 – WBOM/Waxed Cotton Bomber Jacket

Womenswear Collection

Black /Black Tape
Orange /Orange Tape
Olive /Olive Tape

S I M I L



 SS12 – WPSJ / Para-Suit Jacket

Womenswear Collection

Black /Black Tape
Orange /Orange Tape
Olive /Olive Tape

S I M I L



 SS12 – WPG / Para-Suit Gilet

Womenswear Collection

Red / Red Tape
Blue / Blue Tape
Yellow / Yellow Tape
Watermelon / Red Tape
Green / Green Tape
Black / Black Tape
Flouro / Grey Tape

S | M | L



SS12 – WDIP / Dipped Hem Anorak

Womenswear Collection

Rainbow / Grey Tape
Red / Red Tape
Blue / Blue Tape
Yellow / Yellow Tape
Watermelon / Red Tape
Green / Green Tape
Black / Black Tape
Flouro / Grey Tape

S | M | L



SS12 – WCP / Cropped Parka

Womenswear Collection

Red / Red Tape
Blue / Blue Tape
Yellow / Yellow Tape
Watermelon / Red Tape
Green / Green Tape
Black / Black Tape
Flouro / Grey Tape

S | M | L



10

SS12 - WXB / Cross Back Jacket

Womenswear Collection

Rainbow / Grey Tape
Red / Red Tape
Blue / Blue Tape
Yellow / Yellow Tape
Watermelon / Red Tape
Green / Green Tape
Black / Black Tape
Flouro / Grey Tape

S | M | L



11

SS12 - WW / Windcheater

Womenswear Collection

Cream/Blue Print
Cream/Red Print
Charcoal/Reflective

S | M | L



12

SS12-WPUL/Squirrel Print Pullover

Womenswear Collection

Heather/Blue Print/Blue Tape
Heather/Red Print/Red Tape
Heather/Rainbow Tape

S | M | L



13

SS12-WHD/Hoodie Dress

Womenswear Collection

Blue/Charcoal Grey
Navy/Charcoal Grey
Red/Charcoal Grey
Green/Charcoal Grey
Black/Charcoal Grey
Black/Black

S | M | L



14

SS12 – WT MID / T-Shirt Dress Midi

Womenswear Collection

Blue/Charcoal Grey
Navy/Charcoal Grey
Red/Charcoal Grey
Green/Charcoal Grey
Black/Charcoal Grey
Black/Black

S | M | L



15

SS12 – WT MIN / T-Shirt Dress Mini

Spring/Summer 2012 marks an evolution for Christopher Ræburn. An adventurous development, his signature men's and women's outerwear styles are complemented by a newly broadened collection of ready-to-wear apparel.

"A natural evolution, this season is inspired by the exciting challenge of new garment categories and our playful experiments with colour", comments Ræburn. "We've ensured we stay true to our principles of provenance and respect for original garment detailing, as well as undertaking a renewed focus on function."

Continuing his core ranges of 'Remade', 'British' and 'Lightweight', the collection is now accompanied by a new 'Jersey' offering, all showcased as part of London Fashion Week.

REMADE — At the core of the Christopher Ræburn collection is the principle of 'Remade', a demonstration of the craft and quality behind every garment. Each limited edition style is reconstructed from European vintage military fabrics and clothing.

Every 'Remade' garment is strictly limited to 50 pieces worldwide, the range includes a

men's Swiss Pac-Away Jacket, a self-contained piece that compacts into an integrated bag for simple handling. Complemented by the women's Swiss Bomber with jersey lining, both styles are crafted from original 1950s Swiss military maccs.

A women's highlight is the Sailor Jacket, made from men's sailor smocks, the original bibs re-appropriated as pockets. The range is completed by the men's Pop Out Mac, the outer reconstructed from 1950s rubberised capes with a hand silk screen printed inner, as well as a detachable quilted lining remade from British military issue fabric. A women's version is crafted from Skylon and re-appropriated 1980s German Parka linings.

'Remade' hosts this season's animal of choice, a reflective Squirrel remade from high visibility vests.

BRITISH — Continuing his commitment to British industry and textiles, this season Ræburn has partnered with Halley Stevenson, a waxed waterproof fabric mill in Dundee, Scotland.

A key transitional range, the 'British' offering includes a compactable Wax Cotton Jacket for men (with instructions) and a Wax Cotton Kimono Coat for women. Wax Cotton Bomber jackets provide a bridge into Summer, the women's style a revisit to last season's popular Parallel Bomber jacket.

LIGHTWEIGHT — A brilliantly vibrant range for Spring/Summer, 'Lightweight' includes parkas and hoodies each featuring integrated bags for easy compaction, perfect for simple handling and indecisive conditions.

The range features garments produced in both reconstructed parachute fabric, such as the Para-Suit Jacket for men and Para-Suit Gilet for women, as well as showerproof Skylon pieces such as the signature men's Parka and Hoodie.

The women's offering includes the Windcheater and a Dipped Back Anorak, as well as the Cross Back Jacket, featuring an intelligent drawstring technique to shape both waist and sleeves.

JERSEY — A fresh addition to Ræburn's collection, the 'Jersey' range offers accessible everyday garments. A new signature, the topography-inspired Squirrel printed pieces are made from 100% organic cotton jersey, available as both the Squirrel Print Pullover for men and the Long Pullover for women.

Constructed from light British made jersey are the Hoodie Dresses, Reversible Hoodies and men's Jackets. The new T-Shirt Dresses and men's Tees feature concealed front and back pockets, each crafted in association with Earth Positive to ensure sustainable and efficient production.

Christopher Ræburn is a British Fashion Award nominee for Emerging Menswear Talent, and a NEWGEN women's award winner.



Menswear Collection

Olive Green / Yellow (Single)
Olive Green / Black (Single)
Olive Green / Yellow (+Liner)
Olive Green / Black (+Liner)

S | M | L



22 Menswear Collection



B



22

A → SS12 – MPOM / Pop Out Mac
B → SS12 – MPOM / Pop Out Mac Inner

Menswear Collection

Grey / Grosgrain zip

S | M | L



23

SS12 – MPOJ / Swiss Pac-Away Jacket



Menswear Collection

Red
Grey
Black

S | M | L



24

SS12 – MBOM / Wax Cotton Bomber

Menswear Collection

Red
Grey
Black

S | M | L



25

SS12 – MFJT / Wax Cotton Jacket

Menswear Collection

Blue
Yellow
Black

S | M | L



26

SS12 – MPP/Skylon Parallel Parka

Menswear Collection

Blue
Yellow
Red
Green
Black

S | M | L



27

SS12 – MRP/Skylon Hoodie

Menswear Collection

Orange
Olive

S | M | L



28

SS12 – MPSJ / Para-Suit Jacket

Menswear Collection

Craem / Blue Print
Craem / Red Print
Charcoal / Reflective

S | M | L



29

SS12 – MPUL / Squirrel Print Pullover

Menswear Collection

Red / Taupe Tape
Blue / Mélange Grey
Yellow / Mélange Grey
Red / Mélange Grey
Green / Mélange Grey
Black / Mélange Grey

S | M | L



30

SS12 – MRH / Reversible Skylon Hoodie

Menswear Collection

Mélange Grey / Olive
Mélange Grey / Orange

S | M | L



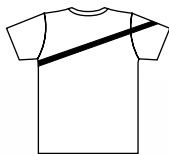
31

SS12 – MJJH / Jersey Jacket – Hoodie

Menswear Collection

Blue / Mélange Grey
Yellow / Mélange Grey
Red / Mélange Grey
Green / Charcoal Grey
Black / Mélange Grey
Black / Black

S | M | L



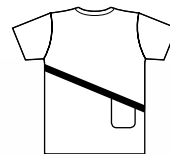
32

SS12 – MFPT / Front Pocket Tee

Menswear Collection

Blue / Mélange Grey
Yellow / Mélange Grey
Red / Mélange Grey
Green / Charcoal Grey
Black / Mélange Grey
Black / Black

S | M | L



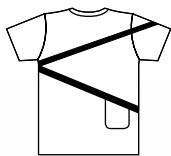
33

SS12 – MBPT / Back Pocket Tee

Menswear Collection

Blue / Mélange Grey
Yellow / Mélange Grey
Red / Mélange Grey
Green / Charcoal Grey
Black / Mélange Grey
Black / Black

S | M | L



34

SS12 - MTPT / Two Pocket Tee



35

Accessories

- Red / Reflective
- Green / Reflective
- White / Reflective
- Flouro / Reflective
- Off-Cut Animal



36

SS12/R-Squirrel



37





Christopher RÆBURN

Visit our new website
→ www.christopherraeburn.co.uk
Follow us on  

FABRIC KEY

Nylon Parachute



Showproof Cotton



Patchwork Military



Shardworking



Skylon



Waxed



Jersey



Squirrel



For information on booking appointments to view the collection, please contact: sales@christopherraeburn.co.uk or phone +44 (0) 20 8525 0687

For more information or media enquiries please contact: Hugh Gallagher
Exposure, EDIT Account Manager
hugh.gallagher@exposure.net
+44 (0) 20 7907 7145

www.christopherraeburn.co.uk
www.christopherraeburn.co.uk/shop

Print: Whiteprint
Design: Régis Tosetti, London
with Simon Palmieri
Photography: Sam Scott-Hunter

Remade in England on 80% recycled Greencoat 80 Silk FSC 115 gsm paper kindly provided by Howard Smith Paper Group



WORLD
LAND
TRUST™

www.carbonbalancedpaper.com
CDP0003821502114540

Supported by:



VICTORINOX

BRITISH FASHION COUNCIL

NEWGEN

SPONSORED BY TOPSHOP



CENTRE
FOR
FASHION
ENTERPRISE

 **Howard Smith Paper
Group**