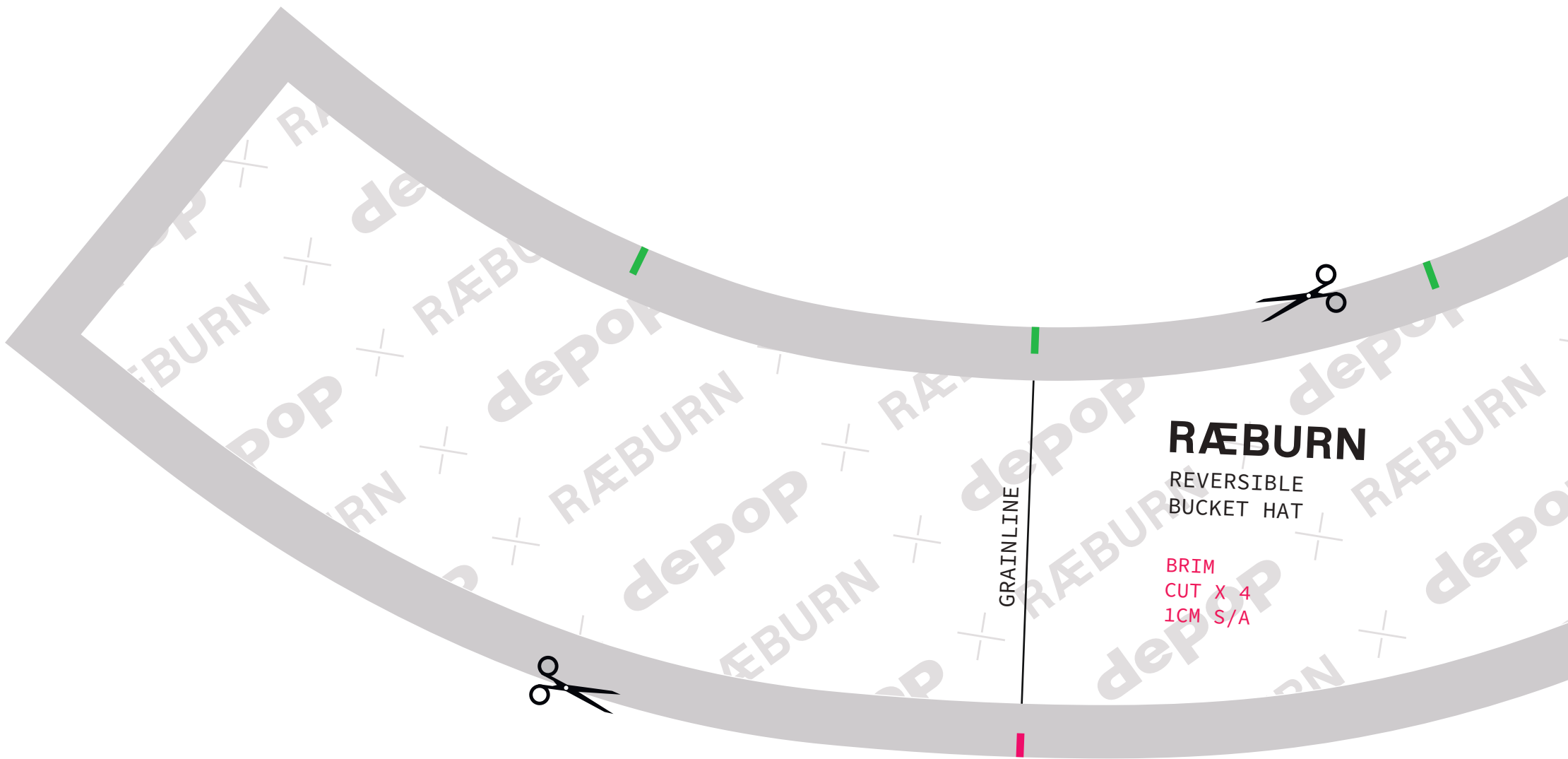
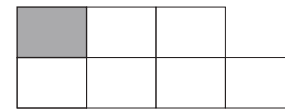


20cm



Measure/confirm 20cm length to ensure pattern is at correct, 100% scale

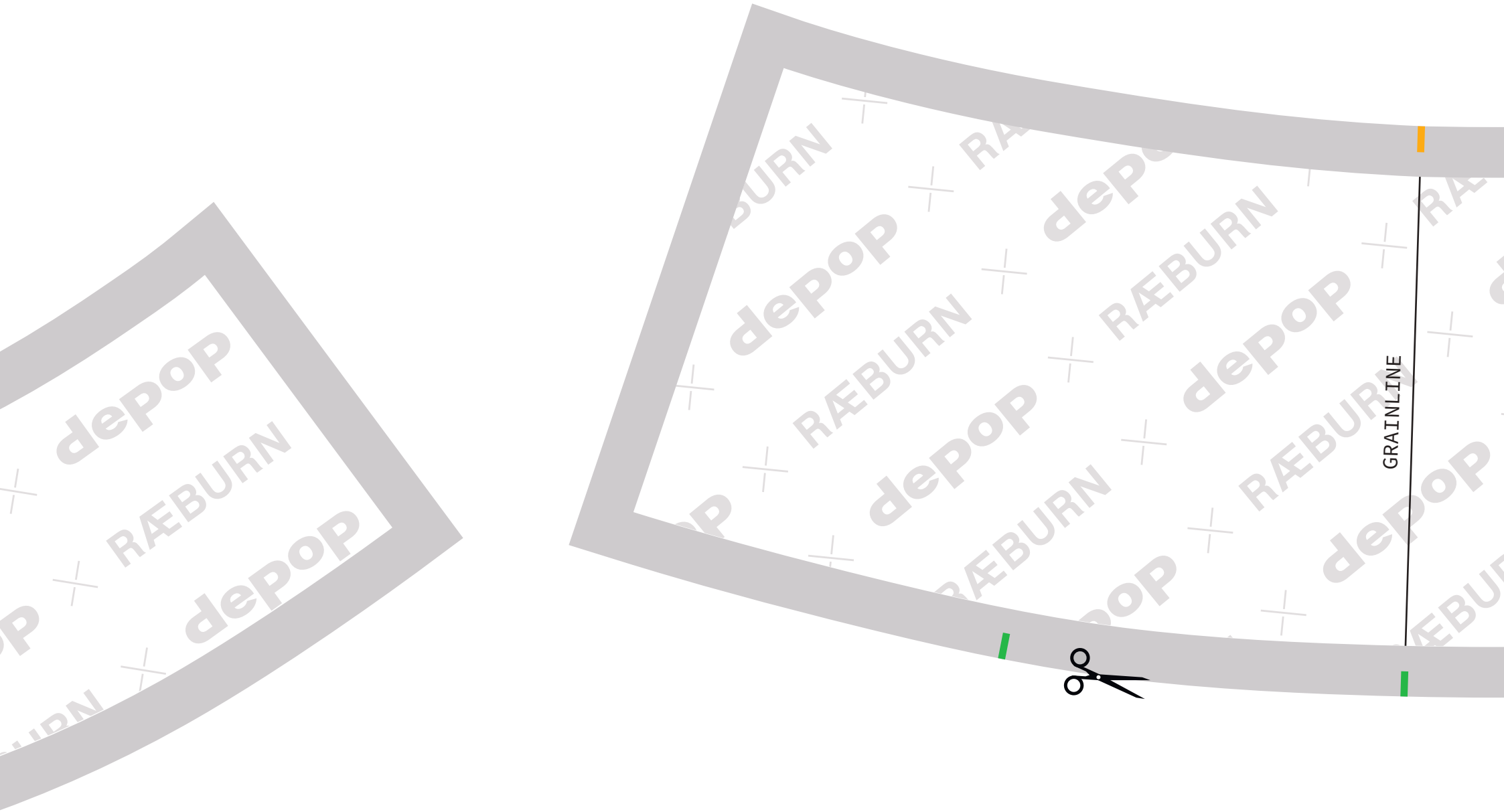
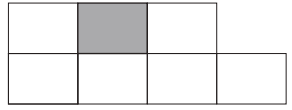
1 RÆBURN REVERSIBLE BUCKET HAT



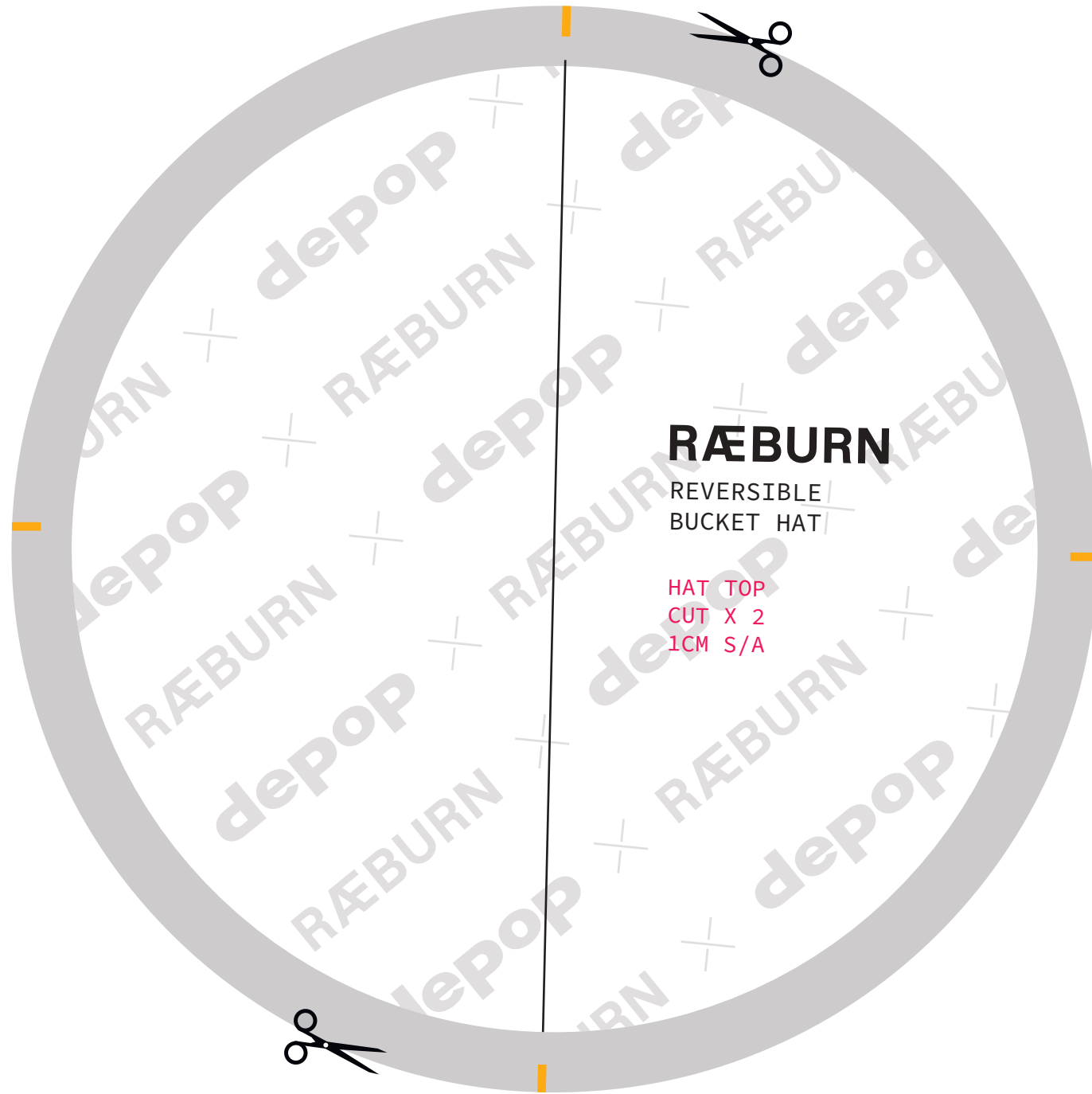
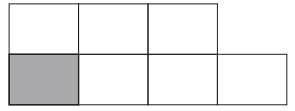
RÆBURN REVERSIBLE BUCKET HAT

BRIM
CUT X 4
1CM S/A

2 RÆBURN REVERSIBLE BUCKET HAT



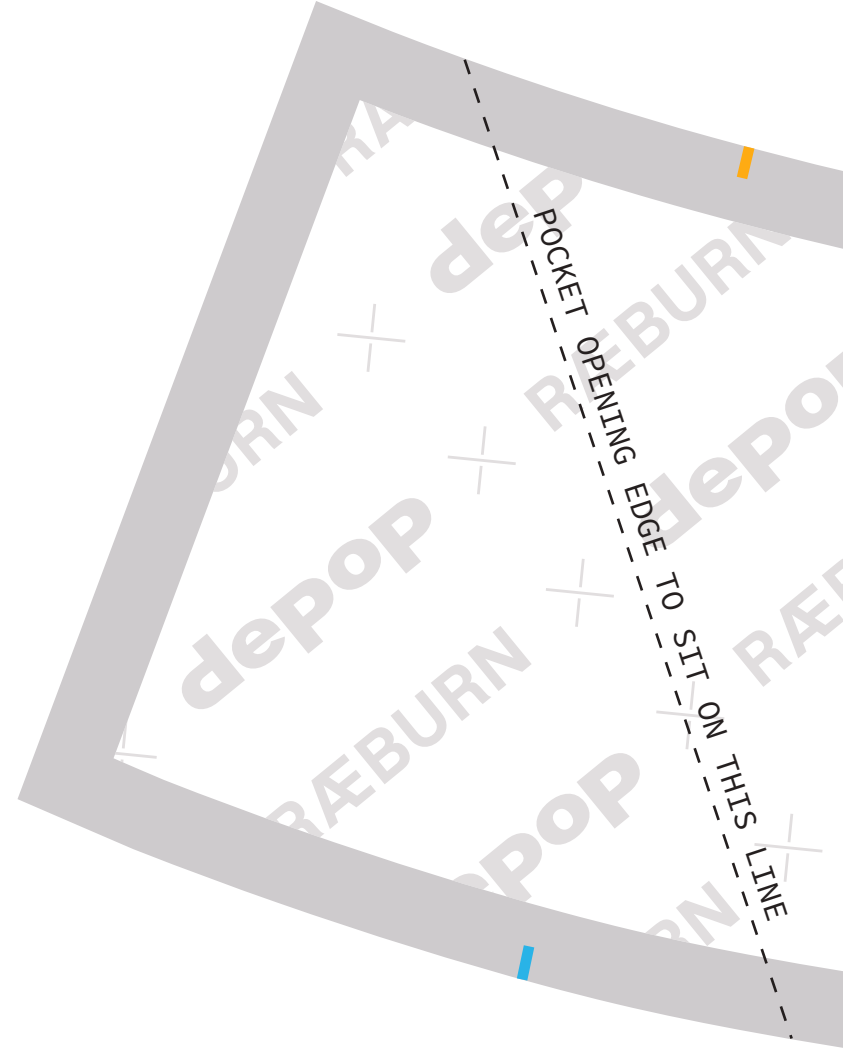
4 RÆBURN REVERSIBLE BUCKET HAT



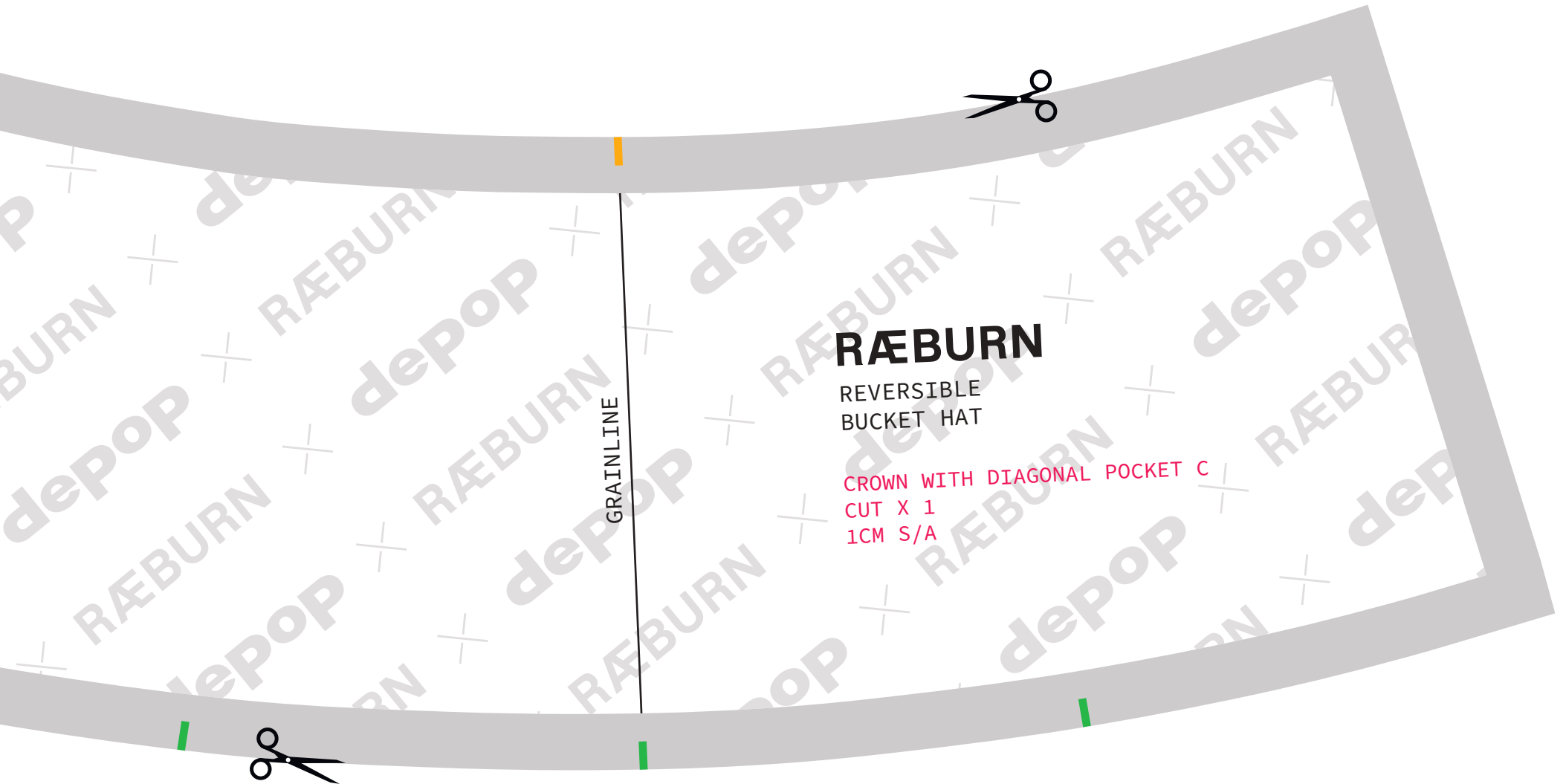
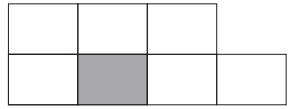
RÆBURN

REVERSIBLE
BUCKET HAT

HAT TOP
CUT X 2
1CM S/A



5 RÆBURN REVERSIBLE BUCKET HAT



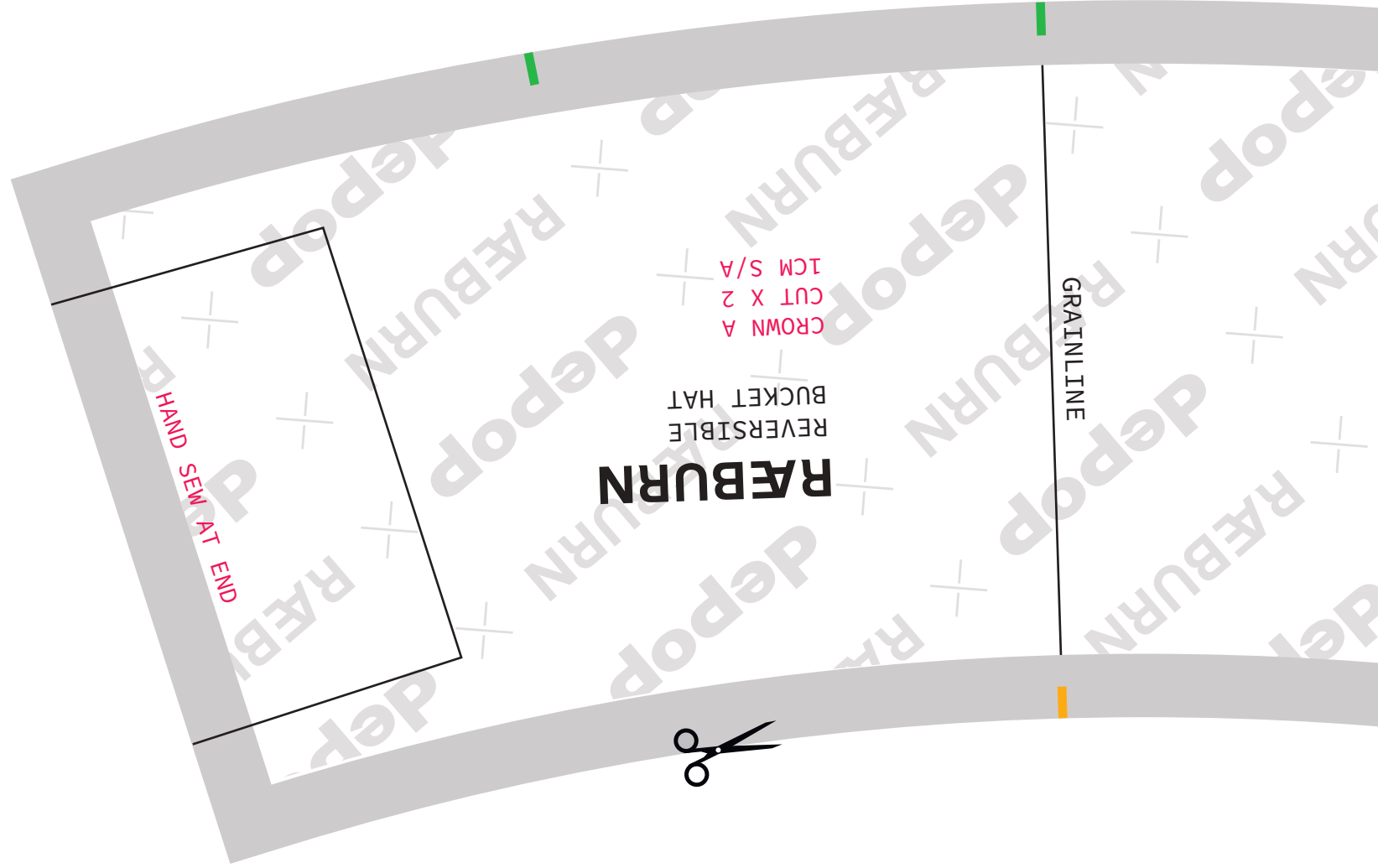
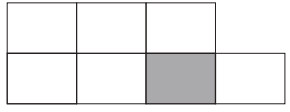
GRAINLINE

RÆBURN

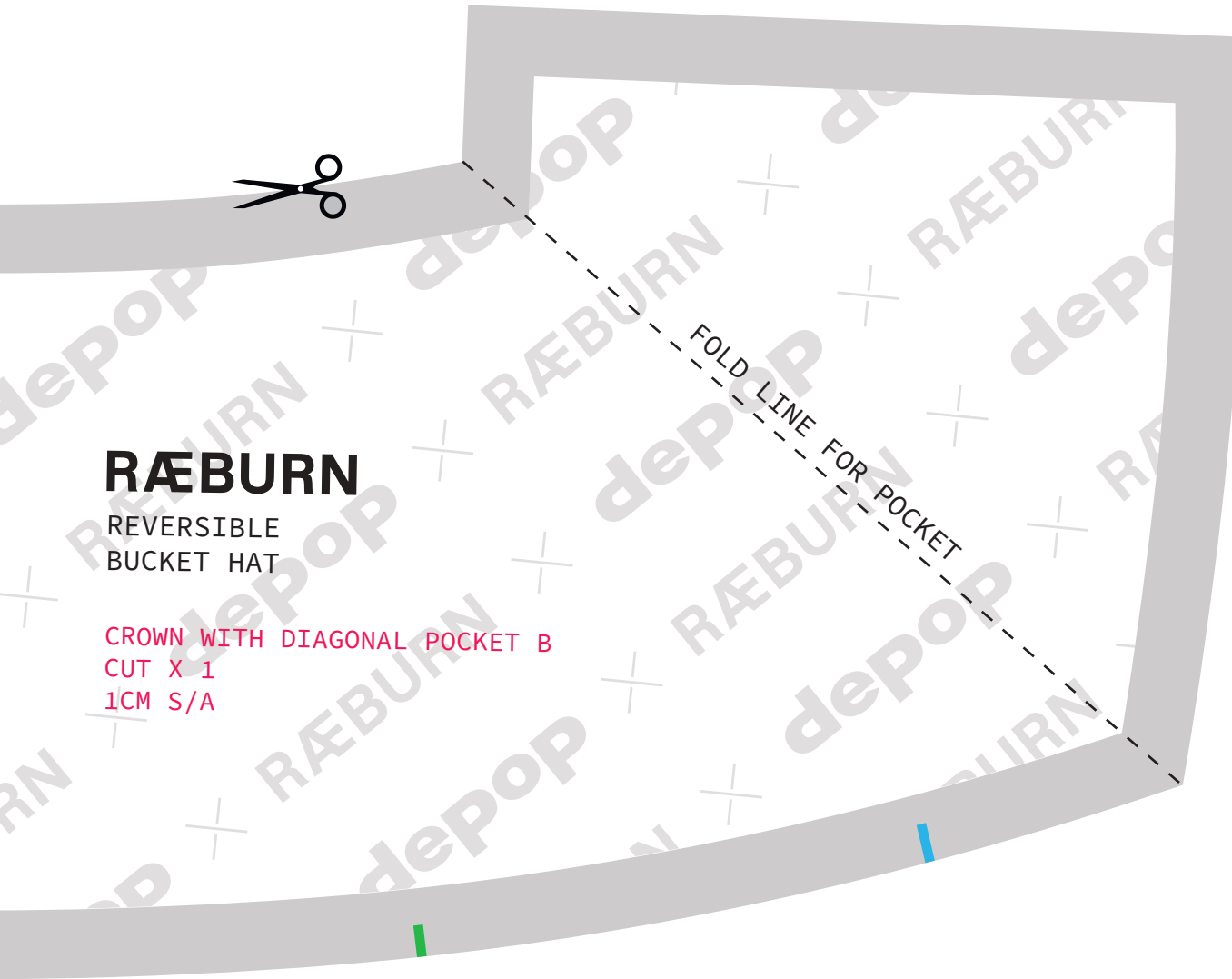
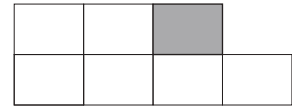
REVERSIBLE
BUCKET HAT

CROWN WITH DIAGONAL POCKET C
CUT X 1
1CM S/A

6 RÆBURN REVERSIBLE BUCKET HAT



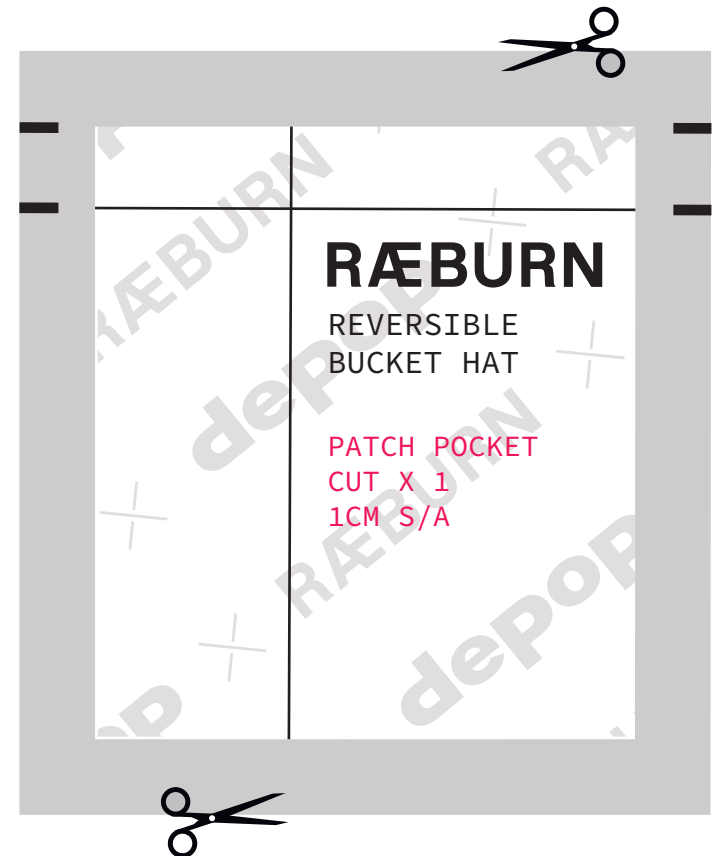
3 RÆBURN REVERSIBLE BUCKET HAT



RÆBURN

REVERSIBLE
BUCKET HAT

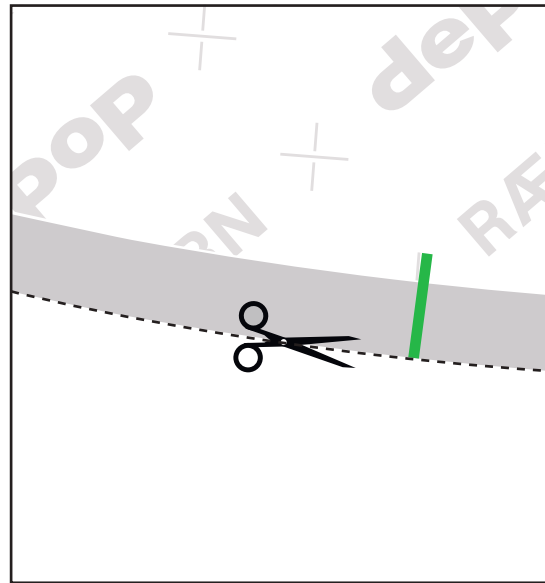
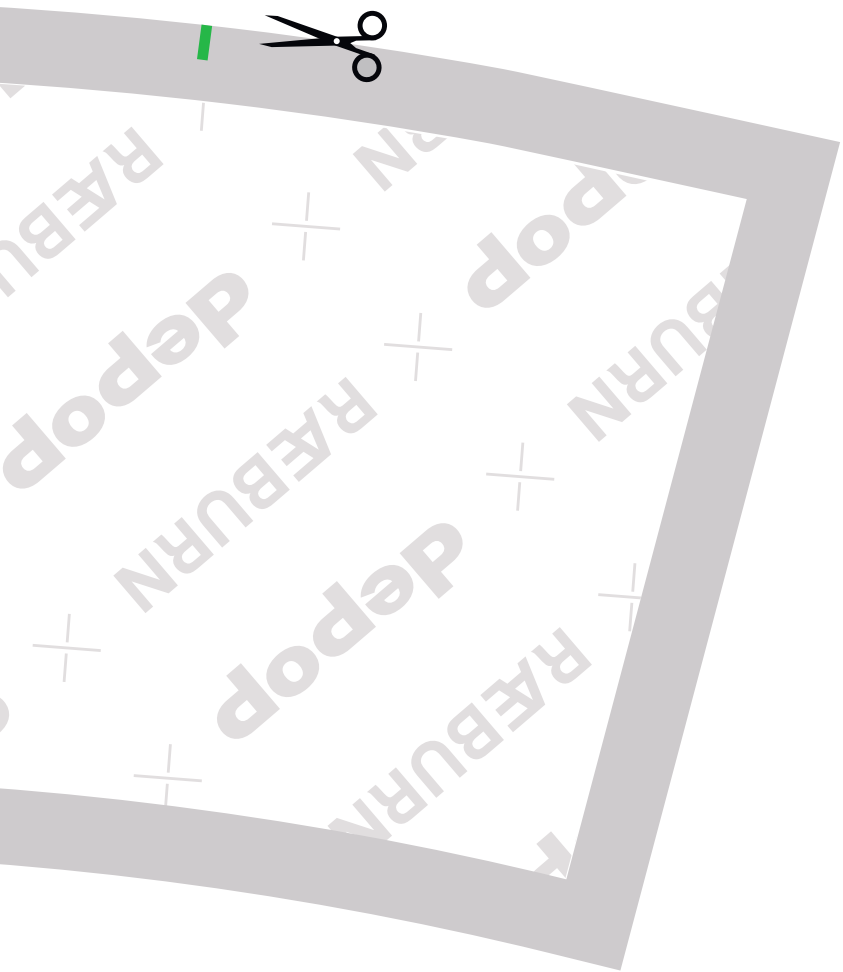
CROWN WITH DIAGONAL POCKET B
CUT X 1
1CM S/A



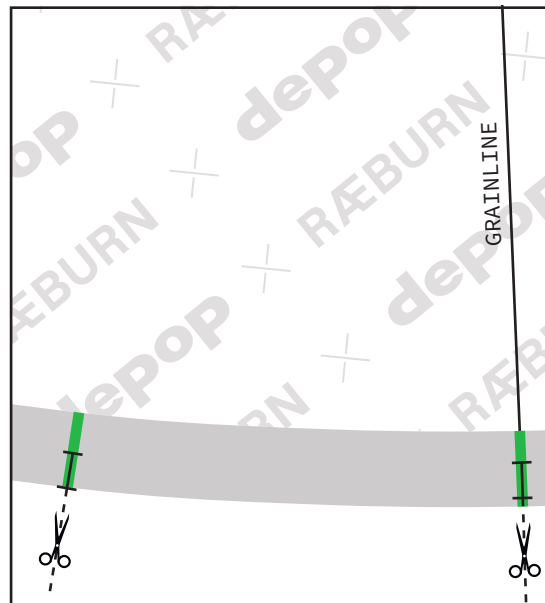
RÆBURN

REVERSIBLE
BUCKET HAT

PATCH POCKET
CUT X 1
1CM S/A



Grey line = 10mm seam allowance
Cut on outside



Notch = cut small 3mm snip only

7 **RAEBURN**
REVERSIBLE
BUCKET HAT

