

**RÆBURN**

Autumn / Winter 2018





We're proud of our **ten years in business** — it's been a challenging journey **but one that has allowed us to build a manifesto for change; a constantly evolving brief to push ourselves forward.** Those ten years have seen our industry **wake up to its responsibilities; Plastic waste, Blue Planet Two and UN Climate Change reports are shaking us from our weary slumber.** We need to evolve or die.

As our activities and **team at RÆBURN grow** we put into writing our obligation **to make good choices, to do the right thing, and to continue to challenge and disrupt.** We'll be thinking **twice as a business** before acting and we ask our **community to do the same;** even small steps will help **and it's important we all work together.**

RÆMADE highlights this **season are inspired by RÆBURN iconic archetypes, from the past ten years, re-imagined using new innovative materials and modern silhouettes.** These **archetypes have been constructed using deadstock materials and waste fabrics from the RÆBURN Lab, as we look to further close the loop as part of the brand's next chapter.**

Original typhoon suits, **designed for protection against the elements, are deconstructed and intelligently reconstructed using the RÆBURN CUT N' SHUT patchwork technique to create an extraordinary parka and matching trouser; both pieces retaining original details and key functional elements.**

German safety jackets, which **offer protection to workers from all industries, are reworked into a unique parka and bomber jacket; both pieces inspired by the silhouettes of the iconic Raft Parka and Nomex Bomber.**

Transit blankets, **universally used for protection, and made of a robust multi-layered recycled wool mix, are reworked to create a reversible field jacket and women's parka.**

Other RÆMADE highlights include **lighter parachute pieces; notably an anorak, culottes, shirt and t-shirt made using the iconic air brake parachute and updated in modern and clean silhouettes.**

In line with our commitment to **producing zero waste in the RÆBURN Lab, off-cuts from the collection**

## CHAPTER TWO BEGINS — INNOVATION IS RUNNING OUT

have been shredded, recycled into a fill and given a new life as protective padding to create an extraordinary see-through puffer RÆMADE from deadstock nylon parachute.

Each new RÆMADE icon has been brought into the main collection with fully RÆCYCLED iterations, notably constructed using recycled PET plastic bottles. Shirting continues to be a key development this season with new silhouettes made using the RÆMADE air brake parachute and clean zipped over-shirts in deadstock parachute nylon with matching relaxed trousers.

Part of our RÆDUCED initiatives, our broadened range of organic cotton jersey has been designed for layering and simplicity with a focus on quality and considered branding using the new iconic RÆBURN parachute logo. The RÆDUCED range sees a **considerable reduction in the amount of labelling used in a bid to make the pieces fully biodegradable.** The new **labelling solutions and branded velcro patches have been developed by Avery Dennison RBIS; a celebration of our ongoing partnership to develop unique and innovative embellishment techniques and branding solutions.**

Continuing on our efforts to use up all the waste, **this season's knitwear is made from a blend of luxurious cashmere and recycled yarn. Re-imagining how waste can be re-used, hand-knitted jumpers and accessories, made using recycled yarn and weaving scrap fabric from the RÆBURN Lab, have been designed in collaboration with fellow Royal College of Art fashion designer Margot Vaaderpass.**

The pangolin, **most trafficked mammal in the world, serves as the tenth anniversary mascot. Its scales allow it to roll into a defensive posture, highlighting its vulnerability and unique sense of protection. This endangered species acts as a symbol to our off-cut animal making workshops, with all proceeds donated to the WWF; the world's leading independent conservation organisation, highlighting that an integrated approach can help save our planet's vanishing biodiversity.**

A select number of **sunglasses from the debut Range Rover Eyewear collection will be showcased on the runway to complement the collection.** The carefully curated, **luxurious fifteen-piece collection is composed of 100% Japanese pure titanium and the finest Italian acetates available. Distinctive aesthetic elements from the aspirational and refined Range Rover vehicles have been meticulously translated into each piece, instinctively evolving today's designer eyewear arena.**

Continuing on the success of the first **Timberland x RÆBURN collection, and following Christopher's appointment as Global Creative Director of the global outdoor lifestyle brand, the two brands have once again collaborated on a menswear, womenswear, accessories and footwear collection. The collection presents original Timberland silhouettes, including the iconic Weatherbreaker Jacket, re-interpreted using iconic RÆBURN materials; notably decommissioned British military parachutes. Pieces from the runway, including footwear and bags for the first time ever, have been replicated in recycled PET (including Timberland's proprietary ReBotl™ material) and organic cotton, and are due to launch in October 2019 in select, premium locations around the world.**









AW19 - RAE1108MR19W / Typhoon Parka  
AW19 - RAE4110MM19W / Recycled Teddy Fleece  
AW19 - RAE2053MR19W / Jersey Mix Jogger  
AW19 - RAE6035MR19W / Typhoon Off-cut Cap  
AW19 - RAE6040UM19W / Fleece Snood



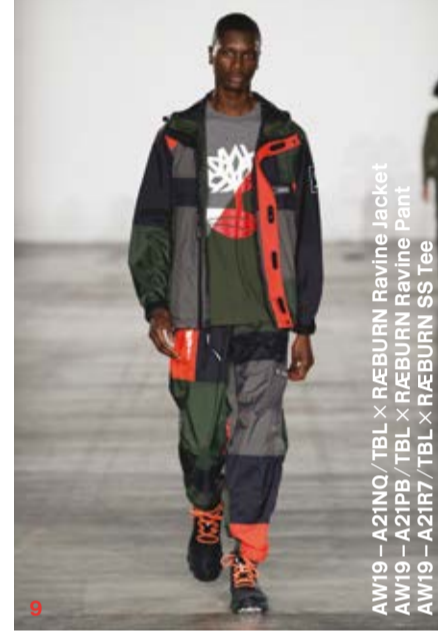
AW19 - RAE2068WR19W / Typhoon Dungarees  
AW19 - RAE4116MM19W / Roll Neck T-Shirt  
AW19 - RAE7060UR19W / Remade Typhoon Bumbag



AW19 - RAE1101MM19W / Parka  
AW19 - RAE304MM19W / Zip Through Overshirt  
AW19 - RAE2071MR19W / Typhoon Combat Trouser



AW19 - RAE118MM19W / LW Parka  
AW19 - RAE119MM19W / LW Anorak  
AW19 - RAE4109MM19W / Spot Camo T-Shirt  
AW19 - RAE2058MR19W / Ripstop Trouser



AW19 - A21ND / TBL x RÆBURN Ravine Jacket  
AW19 - A21PB / TBL x RÆBURN Ravine Pant  
AW19 - A21R7 / TBL x RÆBURN SS Tee



AW19 - A21C9 / TBL x RÆBURN Hoodie Sweatshirt  
AW19 - A21D5 / TBL x RÆBURN Rainier Pant  
AW19 - TBOAZGM9 / TBL x RÆBURN Sling Bag  
AW19 - TBOAZGD / TBL x RÆBURN Backpack



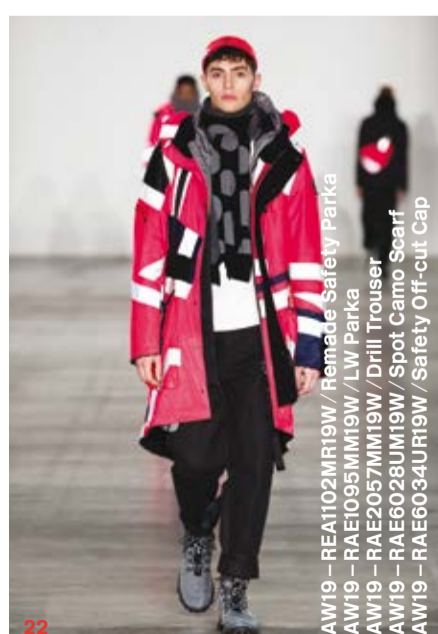
AW19 - RAE2067WR19W / Ripstop Jumpsuit  
AW19 - RAE3045WR19W / Shirt Dress  
AW19 - RAE6027UM19W / Logo Beanie  
AW19 - RAE7065UM19W / RÆBURN Card Holder



AW19 - RAE1106MM19W / Wool Field Jacket  
AW19 - RAE4110MM19W / Recycled Teddy Fleece  
AW19 - RAE2070UR19W / Airbreak 3/4 Trouser  
AW19 - RAE6027UM19W / Logo Beanie  
AW19 - RAE7046UM19W / RÆBURN Wallet  
AW19 - RAE7066UM19W / RÆBURN Travel Pouch



AW19 - RAE112MM19W / Women's Parka  
AW19 - RAE206MM19W / Drill Shirt  
AW19 - RAE3048MR19W / Airbreak Bib Shirt  
AW19 - RAE6040UM19W / Fleece Snood



AW19 - RAE1108MR19W / Remade Safety Parka  
AW19 - RAE105MM19W / Drill Parka  
AW19 - RAE2058UM19W / Drill Trouser  
AW19 - RAE2058UM19W / Spot Camo Scarf  
AW19 - RAE0034UM19W / Safety Off-cut Cap



AW19 - RAE1100MR19W / Remade Safety Bomber  
AW19 - RAE5012MM19W / Spot Camo Knit Crew  
AW19 - RAE2057MM19W / Drill Trouser  
AW19 - RAE6040UM19W / Fleece Snood



AW19 - RAE3040MM19W / Overshirt  
AW19 - RAE1091MM19W / Quilted Gilet  
AW19 - RAE2056MM19W / Wide Leg Combat Trouser  
AW19 - RAE7067UR19W / Large Remade Safety Bumbag



AW19 - RAE1108WR19W / Remade Blanka Overcoat  
AW19 - RAE1116WR19W / Fleece Roll Neck  
AW19 - RAE2070UR19W / Airbreak 3/4 Trouser  
AW19 - RAE7061UR19W / Remade Notebook Bag

# RÆBURN



## NEWS

## COLLABORATIONS

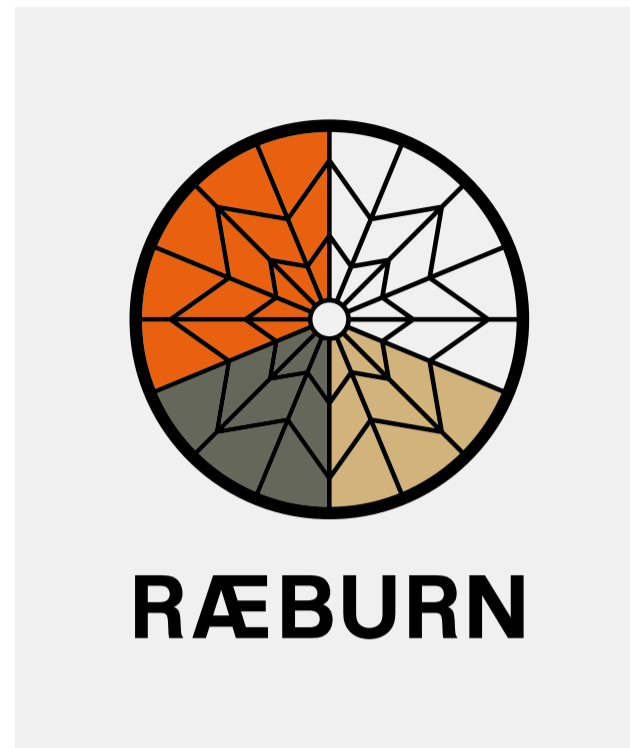
## THE RÆBURN LAB

A COLLABORATIVE, CREATIVE STUDIO WHERE DAILY DESIGN MEETS PAINSTAKING PRODUCTION, ALONGSIDE MONTHLY EVENTS, DISCUSSIONS AND WORKSHOPS.

# A NEW CHAPTER

## → TEN YEAR ANNIVERSARY

2019 coincides with the brand's ten-year anniversary in business and the beginning of a new chapter which sees the label re-brand from Christopher RÆBURN to RÆBURN. The appointment follows Christopher Ræburn's recent appointment as Timberland's first Global Creative Director, and also the appointment of brother Graeme Ræburn as Performance Director after ten years as lead designer for world-leading performance cycling brand Rapha.



**“We are excited to bring our collective design approaches and truly fuse fashion and function as we enter the next chapter of the business”**

— Christopher Ræburn, Creative Director

# COLLABORATION



## → TIMBERLAND

AW19 sees RÆBURN and global outdoor lifestyle brand Timberland collaborate once again on a menswear, womenswear, accessories and footwear collection. The collection presents original Timberland silhouettes, including the iconic Weatherbreaker Jacket, re-interpreted using iconic RÆBURN materials. Pieces from the runway, including footwear and bags for the first time ever, have been replicated in recycled PET (including Timberland's proprietary ReBotl™ material) and organic cotton.





AW19 - RAE1094MM19W / LW Hoodie



AW19 - RAE118MM19W / LW Parka



AW19 - RAE103MR19W / Remade Anorak



AW19 - RAE115MM19W / Mix Print Puffa



AW19 - RAE410MM19W / Recycled Teddy Fleece



AW19 - RAE419MM19W / Spot Camo Hybrid Hoodie



AW19 - RAE1092MM19W / Quilted Jacket



AW19 - RAE1099MM19W / Puffa



AW19 - RAE104MM19W / Anorak



AW19 - RAE117MM19W / LW Hoodie



AW19 - RAE1091MM19W / Quilted Gilet



AW19 - RAE1096MM19W / Wool Bomber



AW19 - RAE1097MM19W / LW Anorak



AW19 - RAE116MM19W / LW Jacket



AW19 - RAE1095MM19W / LW Parka



AW19 - RAE1106MM19W / Wool Field Jacket



RAEBURN







AW19 - RAE4112MM19W / Logo Hoodie



AW19 - RAE2058MR19W / Ripstop Trouser



AW19 - RAE2053MM19W / Jersey Mix Jogger



AW19 - RAE2059MM19W / Logo Jogger



AW19 - RAE3044WR19W / Parachute Pocket Shirt



AW19 - RAE3040MM19W / Overshirt



AW19 - RAE3049MR19W / Airbreak T-Shirt



AW19 - RAE4124MM19W / RÆBURN Crew



AW19 - RAE4104MR19W / Parachute Pocket LS T-Shirt



AW19 - RAE3048MR19W / Airbreak Bib Shirt



AW19 - RAE3041MR19W / Zip Through Overshirt



AW19 - RAE3036MR19W / Parachute Pocket Shirt



AW19 - RAE5012MM19W / Spot Camo Knit Crew



AW19 - RAE5014MM19W / Shark Knit Crew



AW19 - RAE5015MM19W / RÆBURN Knit Sweatshirt



AW19 - RAE4111MM19W / Jersey Mix Crew



AW19 - RAE2072MR19W / Airbreak Shorts



AW19 - RAE4101MR19W / Parachute Pocket T-Shirt



AW19 - RAE4106MM19W / Off-cut Insulation Pocket T-Shirt



AW19 - RAE4109MM19W / Spot Camo T-Shirt



AW19 - RAE4123MM19W / RÆBURN T-Shirt



AW19 - RAE4099MM19W / Logo T-Shirt



AW19 - RAE7067UR19W / Large Remade Safety Bum bag



AW19 - RAE7060UR19W / Remade Typhoon Bum bag



AW19 - RAE6030UM19W / RÆ Scarf  
AW19 - RAE6028UM19W / Spot Camo Scarf



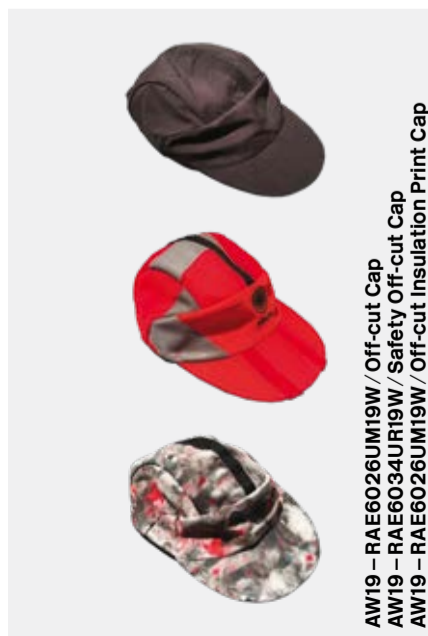
AW19 - RAE6033UM19W / Shark Scarf  
AW19 - RAE6038UM19W / Logo Scarf



AW19 - RAE6040UM19W / Fleece Snood



AW19 - RAE6027UM19W / Logo Beanie



AW19 - RAE6026UM19W / Off-cut Cap  
AW19 - RAE6034UR19W / Safety Off-cut Cap  
AW19 - RAE6026UM19W / Off-cut Insulation Print Cap



AW19 - RAE9024UR19W / Small Lanyard  
AW19 - RAE9025UR19W / Long Lanyard



AW19 - RAE9017MM19W / RÆBURN Sole Sock  
AW19 - RAE9014MM19W / RÆBURN Sock  
AW19 - RAE9015MM19W / Logo Sock  
AW19 - RAE9016MM19W / Spot Camo Sock



AW19 - RAE9012UR19W / Remade Pangolin Mascot

# RESPONSIBLE DESIGN & INTEGRITY

## → RÆMADE

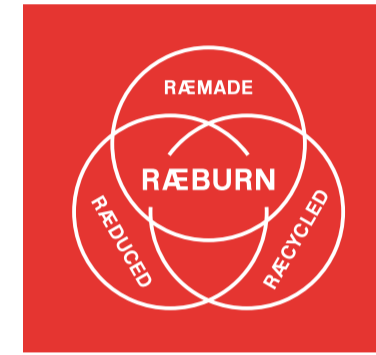
Paramount to the RÆBURN philosophy since 2001 is RÆMADE — reworking surplus materials, products and artefacts into completely new designs. Every RÆMADE piece is a limited edition, proudly cut and reconstructed in England.

## → RÆDUCED

Designs developed at the RÆBURN Lab are considered for their impact on the environment. Whether reworking surplus materials, minimizing carbon footprint with local manufacturing, or simply producing smaller batches, waste can be RÆDUCED.

## → RÆCYCLED

Seeking the most sustainable materials around the globe, and working with responsible manufacturing partners is key to the RÆBURN brand. RÆCYCLING pre-existing materials and harnessing green technologies is fundamental to the production process.



“I think as a designer you have an obligation to consider what you are doing and why; ultimately we want to make strong, sustainable choices that provide our customers with a completely unique and desirable product”

— Christopher Ræburn, Creative Director

# THE RÆBURN LAB

## → WORKSHOPS

The RÆBURN Lab in Hackney, London, is poignantly located in what used to be the Burberry archive and is increasingly used as a platform to host a wide variety of workshops from open studio days for the local community to more advanced workshops such as our popular #OFFCUTANIMALS workshops where attendees are invited to make their own animal using off-cuts from the atelier to create something completely unique.



## → RETAIL

The RÆBURN Lab is open to the public every weekend and is a chance for visitors to shop our collections and experience the craft, innovation and dynamics of a successful fashion studio. The space can be experienced during the week through a walk-in service by private appointment where customers can order bespoke pieces by choosing their own fabrics, making each piece completely unique and labelled 1/1.



# RÆBURN

# RECYCLED

# RECYCLED

# RÆMAD

RÆBURN  
Studio 1  
The Textile Building  
29a Chatham Place, Hackney  
London E9 6NY  
+44 (0) 208 510 9689  
studio@raeburndesign.co.uk

www.raeburndesign.co.uk



AW19 - RAE016WR19W / Remade Knit Roll Neck  
AW19 - RAE006UR19W / Hand Knit Remade Scarf  
AW19 - RAE2059WR19W / Ripstop Roll Up Trouser



AW19 - RAE105MR19W / Reversible Field Jacket  
AW19 - RAE009MR19W / Remade Knit Crew  
AW19 - RAE2059WR19W / Ripstop Trouser  
AW19 - RAE6042UR19W / Off-cut Insulation Snood



AW19 - RAE108MR19W / Off-cut Insulation Puffa  
AW19 - RAE114WR19W / Women's Anorak  
AW19 - RAE2059WR19W / Ripstop Trouser  
AW19 - RAE6042UR19W / Off-cut Insulation Snood



AW19 - RAE115MM19W / Mix Print Puffa  
AW19 - RAE108MR19W / Off-cut Insulation Puffa  
AW19 - RAE110MM19W / LW Jacket  
AW19 - RAE2059WR19W / Drill Trousers  
AW19 - RAE6026UM19W / Off-cut Insulation Print Cap



AW19 - RAE014MR19W / Airbreak Bib Shirt  
AW19 - RAE2059MR19W / Ripstop Trouser



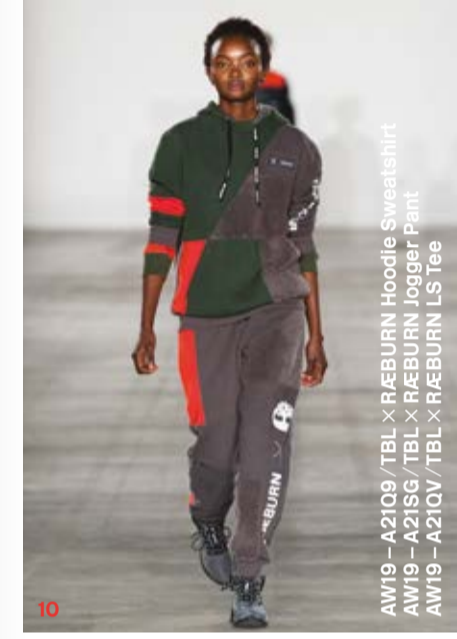
AW19 - RAE3040MM19W / Overshirt  
AW19 - RAE3049MR19W / Airbreak T-Shirt  
AW19 - RAE3036MR19W / Parachute Pocket Shirt  
AW19 - RAE2057MM19W / Drill Trousers  
AW19 - RAE6034UR19W / Safety Off-cut Cap



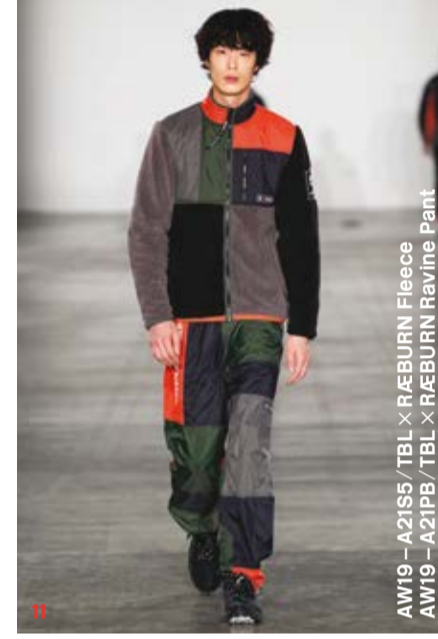
AW19 - RAE103MR19W / Airbreak Anorak  
AW19 - RAE1029MM19W / Quilted Jacket  
AW19 - RAE6040UM19W / Fleece Snood  
AW19 - RAE7067UR19W / Large Remade Safety Bumbag



AW19 - RAE111WR19W / Remade Safety Anorak  
AW19 - RAE108MM19W / LW Jacket  
AW19 - RAE2059WR19W / Remade Safety Skirt



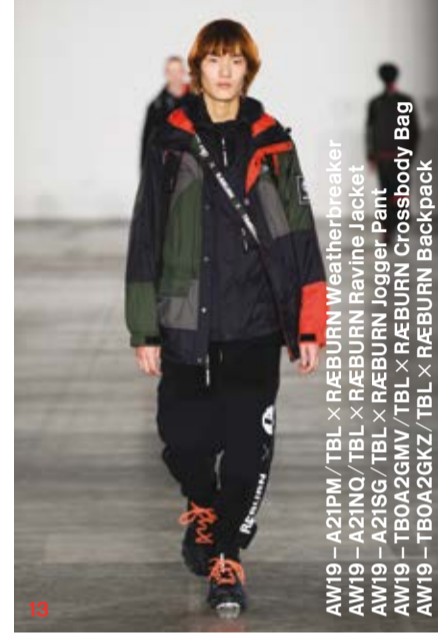
AW19 - A2109 / TBL X RÆBURN Hoodie Sweatshirt  
AW19 - A2159 / TBL X RÆBURN Jogger Pant  
AW19 - A210V / TBL X RÆBURN LS Tee



AW19 - A2155 / TBL X RÆBURN Fleece  
AW19 - A21PB / TBL X RÆBURN Ravine Pant



AW19 - A21PX / TBL X RÆBURN Purfa Jacket  
AW19 - A21SQ / TBL X RÆBURN Ravine Pant  
AW19 - TBOA2GMV / TBL X RÆBURN Crossbody Bag



AW19 - A21PW / TBL X RÆBURN Weatherbreaker  
AW19 - A21NQ / TBL X RÆBURN Weatherbreaker  
AW19 - A21SQ / TBL X RÆBURN Jogger Pant  
AW19 - TBOA2GMV / TBL X RÆBURN Crossbody Bag  
AW19 - TBOA2GRZ / TBL X RÆBURN Backpack



AW19 - RAE112MM19W / Women's Parka  
AW19 - RAE3036MR19W / Shirt Dress  
AW19 - RAE115WR19W / Oversized Waifle Roll Neck  
AW19 - RAE2059WR19W / Ripstop Trouser



AW19 - RAE1120MR19W / Typhoon Bomber  
AW19 - RAE3043MM19W / RÆBURN Shirt  
AW19 - RAE2056MM19W / Wide Leg Combat Trouser



AW19 - RAE103MR19W / Remade Airbreak Anorak  
AW19 - RAE3036MR19W / Parachute Pocket Shirt  
AW19 - RAE2070UR19W / Airbreak 3/4 Trouser



AW19 - RAE3049MR19W / Airbreak T-Shirt  
AW19 - RAE3036MR19W / Parachute Pocket Shirt  
AW19 - RAE2072MR19W / Airbreak Shorts  
AW19 - RAE2057MM19W / Drill Trouser



AW19 - A282C / TBL x RÆBURN Brooklyn Fabric 6 inch Boot  
 AW19 - A272R / TBL x RÆBURN Brooklyn Fabric 6 inch Boot



AW19 - TBOA2GMV / TBL x RÆBURN Crossbody Bag



AW19 - TBOA2GKZ / TBL x RÆBURN Backpack



AW19 - A289A / TBL x RÆBURN Brooklyn Fabric Mid Boot  
 AW19 - A282N / TBL x RÆBURN Brooklyn Fabric Mid Boot



AW19 - TBOA2GMK / TBL x RÆBURN Sling Bag



AW19 - TBOA2GKD / TBL x RÆBURN Backpack



AW19 - A284I / TBL x RÆBURN Delphiville Fabric Mid Boot  
 AW19 - A268W / TBL x RÆBURN Delphiville Fabric Mid Boot



AW19 - TBOA2GM9 / TBL x RÆBURN Sling Bag



AW19 - TBOA2GN7 / TBL x RÆBURN Crossbody Bag







FOR INFORMATION ON BOOKING APPOINTMENTS TO VIEW THE COLLECTION, PLEASE CONTACT  
sales@raeburndesign.co.uk  
+44 (0)208 5109 689

FOR PRESS ENQUIRIES, PLEASE CONTACT  
EXPOSURE  
Daniel Somner  
daniel.somner@exposure.net  
+44 (0)207 9077 228

COLLABORATION APPAREL, SHOES & ACCESSORIES: TIMBERLAND x RÆBURN  
SUNGLASSES: Range Rover Eyewear  
STYLING: Také Sato  
CASTING: Noemi Varga  
CAMPAIGN IMAGES: Jean-Vincent Simonet  
ART DIRECTION & GRAPHIC DESIGN: Régis Tosetti & Simon Palmieri  
PRINT: Newspaper Club

SPECIAL THANKS  
The British Fashion Council  
Timberland  
Avery Dennison RBIS

MODELS  
Jacob W, Héliène (NEVS); Charley, Nicholas (The Squad); Jack D, Junior, Louis G (Select); Yvonne, Emin A (Established); Jacob B, Jean (Milk); Arnaud (NII); Simona (Storm); Yacine (The Hive); Jin, Aaron (Wilhelmina); Daein, Gracious (AMCK); Tex (NEXT); Babacar, Jeenu (Elite); Alexia, Talib (PRM); Jai, Woo Chan (D1)

FOLLOW US  
@Raeburn\_Design

SUPPORTED BY



RANGE ROVER  
EYEWEAR





[www.raeburndesign.co.uk](http://www.raeburndesign.co.uk)