

Christopher
RÆBURN

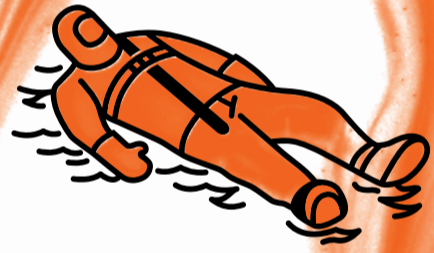


christopherraeburn.co.uk

1 FOR AW18, CHRISTOPHER RÆBURN

AW18 IMMERSE

DRAWS INSPIRATION FROM THE BEAUTY AND FRAGILITY OF OUR OCEANS. A DEEP DIVE INTO THE BIG BLUE, THE COLLECTION APTLY NAMED IMMERSE STANDS AS OUR MOST CREATIVE CALL TO ARMS AND FOCUSES ON RESPONSIBLE DESIGN AND SOURCING TO PROTECT BOTH THE PLANET AND WEARER.



2 With innovative design and sustainable intelligence at the core of the brand, this season Christopher RÆBURN's **REMADE** ethos is further emphasised through the use of truly unique and pioneering materials including protective neoprene immersion suits and Royal Air Force helicopter winchman coveralls. Preparing the wearer for the most unpredictable sea conditions, the immersion suits have been reworked and cut into an extraordinary women's anorak and men's overcoat; both pieces retaining authentic graphic detailing and key functional elements including waterproof zips and emergency whistles.

RAF helicopter winchman coveralls have been intelligently reworked into an anorak, coat and trouser. Offering water resistance, breathability and thermal comfort, the pieces are complete with woven reflective velcro patches developed by Avery Dennison RBIS; a celebration of the ongoing partnership to develop unique and innovative embellishment techniques and branding. An original RAF helicopter emergency pack has been used to create a truly unique bag system complete with **REMADE** branding, and designed in collaboration with artist and fellow Royal College of Art designer Nikeisha Nelson (nikinel.com).

In contrast to the immersion pieces, other **REMADE** highlights include a contemporary women's overcoat, top and trouser cut from original Russian Naval blankets with no two piece the same due to the uniqueness and irregularity of the pattern. Danish Naval blankets have been reworked to create a women's bomber and men's

overcoat and iconic RÆ Bag. Finally, parachute pieces have been updated this season with **REMADE** branding and the iconic 4 R's (**REMADE REDUCED RECYCLED RÆBURN**) tape.

References from the immersion and winchman suits are pulled into the main collection with strapping details used on rip stop contemporary mags in black and yellow and a taped hooded coat. The Hainsworth wool bomber, now a Ræburn classic, is also re-imagined in a seasonal black and yellow.

New developments this season, aiming to broaden the collection, include a shirt jacket in organic denim cotton and shirt in organic poplin. Continuing the partnership with local denim maker Blackhorse Lane Ateliers, the two brands have also once again worked closely together to produce a high quality organic denim jean and reversible over-shirt, individually numbered with **REMADE** pocket detailing.

Luxury unisex merino knitwear comes in two seasonal designs, one featuring the highly topical mascot for AW18, the giant squid, and the other referencing instructional design from the winchman suit. Part of Christopher RÆBURN's **REDUCED** initiative; core jersey pieces include crews and hoodies, t-shirts and joggers made from organic cotton, which have been lined with fleece back sweat for additional warmth and comfort.

AW18 sees the introduction of a new collaboration with cold water surf brand Finisterre. In a meeting of minds and a sharing of principles, Finisterre's approach to fabric development and innovation, driven by sustainability, comes together with Ræburn's complementary

ethos and signature detailing. Collectively, they have explored and created a range of directional and functional outerwear, knitwear, tees and exploration accessories, ready for immersion in the harshest of conditions. The result presents familiar, yet re-invented silhouettes, referencing Finisterre's love of the sea, while acknowledging the dark romance found within its embrace, and the hardships of coastal exploration. The albatross, the largest seabird in the world, renowned for its endurance and altruistic nature, acts as the symbol of the collaboration and can be found throughout the collection.

Continuing on the success of last season, Christopher RÆBURN and explorer footwear brand Palladium have once again worked closely together to create a series of functional and innovative footwear. Embracing Ræburn's sustainable design manifesto, the collaboration is constructed using high quality recycled materials including recycled rubber, recycled PET coated polyester and scuba, the shoes prepare the wearer for the most unpredictable environments. True innovation comes in the form of branded carabiners and lanyards attached to the back of the shoe, while other styles include a unique safety kit complete with a branded emergency whistle. Palladium's performance-led innovation coupled with fashion-forward design and signature Ræburn details bring an uncompromising footwear collection to life. Debuted last season, AW18 collaboration boots feature the unified logo **PALLÆDIUM** which integrates the spelling of Ræburn and Palladium.









AW18 - CR1053MR18W / Mens Remade Blanket Mac
AW18 - CR1043MM18W / Mens Ruched Ripstop Coat
AW18 - CR1500UM18W / Do Not Use Ones Knit Crew
AW18 - CR2029MM18W / Organic Denim Jeans



AW18 - CR1054MR18W / Russian Blanket Mid Length
AW18 - CR1056MM18W / British Millerain Anorak
AW18 - CR4060MR18W / Remade Blanket Crew
AW18 - CR2034MR18W / Remade Blanket Joggers



AW18 - CR3014WR18W / Remade Blanket Top
AW18 - CR2032WR18W / Remade Blanket Trousers
AW18 - CR3005UR18W / Remade Parachute Hoodie



AW18 - CR1048WR18W / Remade Russian Blanket Overcoat
AW18 - CR1040WM18W / Womens Ripstop Mac
AW18 - CR4030WM18W / Flurry Jumper Dress



AW18 - CR1049WR18W / Womens Remade Blanket Overcoat
AW18 - CR1043MM18W / Womens Ribbed Jumper
AW18 - CR2029WR18W / Remade Danish Blanket Skirt
AW18 - CR7017UM18W / Ripstop RAE Bag



AW18 - CR1052WR18W / Remade Blanket Overcoat
AW18 - CR1042MM18W / Mens Ripstop Mac
AW18 - CR4047UM18W / Do Not Use Once T-Shirt
AW18 - CR2029MM18W / Organic Denim Jeans



AW18 - CR3008WM18W / Ruched Jumpsuit
AW18 - CR010WM18W / Ruched Side Overshirt
AW18 - CR7010UR18W / Remade Blanket RAE Bag



AW18 - CR3011MM18W / Ruched Back Shirt Jacket
AW18 - CR3014MM18W / Ruched Back Shirt
AW18 - CR2022MM18W / Combat Trousers
AW18 - CR4041UM18W / Squid T-Shirt



AW18 - CR1062MR18W / Remade Immersion Coat
AW18 - CR4047UM18W / Do Not Use Once T-Shirt
AW18 - CR2023MM18W / Ruched Ripstop Trousers



AW18 - CR1056MM18W / British Millerain Anorak
AW18 - CR1042MM18W / Mens Ripstop Mac
AW18 - CR2033MR18W / Remade Winchman Trousers
AW18 - CR4041UM18W / Squid T-Shirt



AW18 - CR1057MM18W / British Millerain Mid Length
AW18 - FM3033 CR FINISTERRE / Hoodie
AW18 - CR2022MM18W / Combat Trousers



AW18 - FM546 CR x FINISTERRE / Wadded Long Line Coat
AW18 - FM545 CR x FINISTERRE / Wadded Shirt
AW18 - FM4238 CR x FINISTERRE / Instruction T-Shirt
AW18 - FM283 CR x FINISTERRE / Waterproof Trousers



AW18 - FM546 CR x FINISTERRE / Wadded Long Line Coat
AW18 - FM5008MM18W / Albatross Roll Neck
AW18 - CR2024MM18W / Jersey Mix Skirt

Christopher RÆBURN

NEWS

COLLABORATIONS

THE REMADE STUDIO

A COLLABORATIVE, CREATIVE STUDIO WHERE DAILY DESIGN MEETS PAINSTAKING PRODUCTION, ALONGSIDE MONTHLY EVENTS, DISCUSSIONS AND WORKSHOPS.

↓ COLLABORATIONS

Another key component of the brand's approach to design is that of collaboration. Today, the brand works with partners around the world, reimagining existing designs, championing innovation and drawing a growing network of collaborators into the creative world of Christopher RÆBURN.

→ FINISTERRE

AW18 sees the introduction of a new collaboration with cold water surf brand Finisterre. In a meeting of minds and a sharing of principles, the two brands have explored and created a range of directional and functional outerwear, knitwear, tees and exploration accessories, ready for immersion in the harshest of conditions.



→ PALLADIUM

Continuing on the success of last season, Christopher RÆBURN and Palladium have once again worked closely together to create a series of functional and innovative footwear. The boots are constructed using high quality recycled materials including recycled rubber, recycled PET coated polyester and scuba, preparing the wearer for the most unpredictable environments, and feature the unified logo PALLÆDIUM.



↓ SUSTAINABILITY & INTEGRITY

→ REMADE

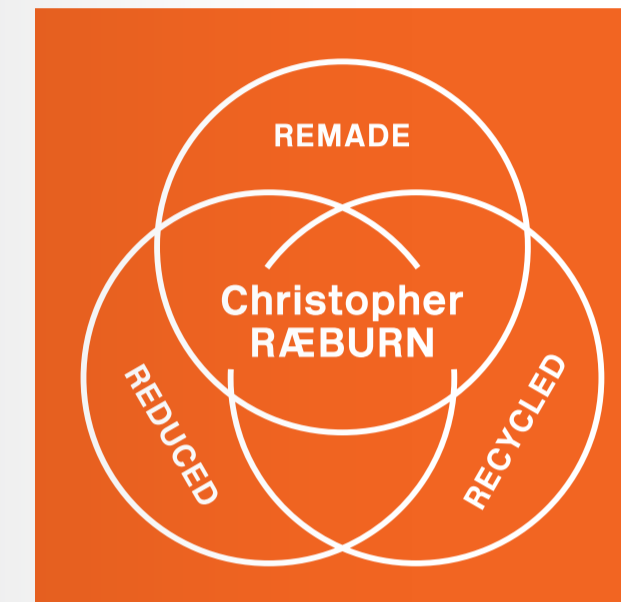
Paramount to the Christopher RÆBURN philosophy since 2001 is REMADE – reworking surplus materials, products and artefacts into completely new designs. Every REMADE piece is a limited edition, proudly cut and reconstructed in England.

→ REDUCED

Designs developed at the Christopher RÆBURN studio are considered for their impact on the environment. Whether reworking surplus materials, minimising carbon footprint with local manufacturing, or simply producing smaller batches, waste can be REDUCED.

→ RECYCLED

Seeking the most sustainable materials around the globe, and working with responsible manufacturing partners is key to the Christopher RÆBURN brand. RECYCLING pre-existing materials and harnessing green technologies is fundamental to the production process.



“I think as a designer you have an obligation to consider what you are doing and why; ultimately we want to make strong, sustainable choices that provide our customers with a completely unique and desirable product”

— Christopher Ræburn, Creative Director

↓ THE REMADE STUDIO



→ WORKSHOPS

The REMADE Studio in Hackney, London, is poignantly located in what used to be the Burberry archive and is increasingly used as a platform to host a wide variety of workshops from open studio days for the local community to more advanced workshops such as our popular #OFFCUTANIMALS workshops where attendees are invited to make their own animal using off-cuts from the atelier to create something completely unique.

→ MADE TO ORDER

The REMADE Studio Store is open to the public every weekend and can be experienced during the week through a walk in service by private appointment where customers can order bespoke pieces by choosing their own fabrics, making each piece completely unique and labelled 1/1. Our DIY t-shirt service offers customers a fun and creative way to design their own organic cotton t-shirt using Avery Dennison RBIS woven patches made from recycled yarns.





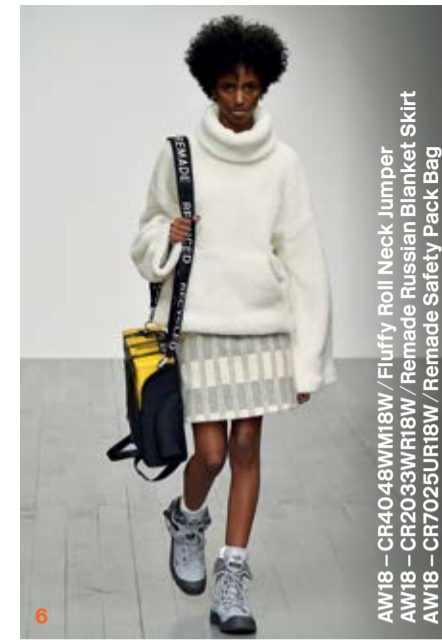
Christopher RÆBURN
Studio 1
The Textile Building
29a Chatham Place, Hackney
London E9 6NY
+44 (0) 208 510 9689

studio@christopherraeburn.co.uk
www.christopherraeburn.co.uk

FOLLOW US
f @StudioRaeburn
ig @ChristopherRaeburn
tv @StudioRaeburn



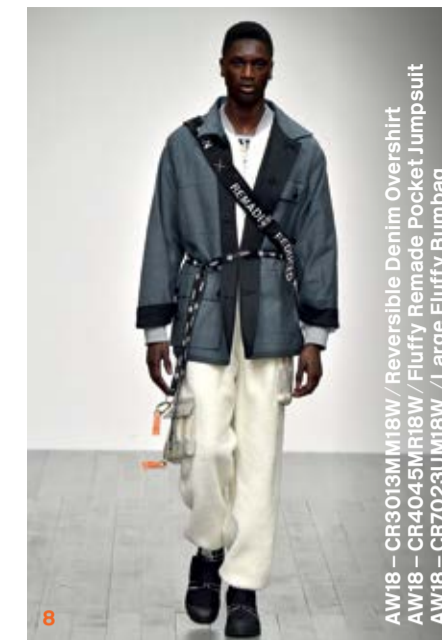
AW18 - CR4064UM18W / Remade Blanket Sleeve Crew
 AW18 - CR2009UM18W / Organic Denim Jeans
 AW18 - CR7025UR18W / Remade Safety Pack Bag



AW18 - CR4048WM18W / Fluffy Roll Neck Jumper
 AW18 - CR2033UR18W / Remade Russian Blanket Skirt
 AW18 - CR7025UR18W / Remade Safety Pack Bag



AW18 - CR1059MR18W / Russian Blanket CUT 'N' SHUT Bomber
 AW18 - CR3005UR18W / Remade Parachute Hoodie
 AW18 - CR2029MM18W / Organic Denim Jeans
 AW18 - CR7016UR18W / Small Remade Russian Blanket Tote
 AW18 - CR7025UR18W / Remade Blanket Bumbag



AW18 - CR3013M18W / Reversible Denim Overshirt
 AW18 - CR4045MR18W / Fluffy Remade Pocket Jumpsuit
 AW18 - CR7025UR18W / Large Fluffy Bumbag



AW18 - CR4040UM18W / Velcro Patch Crew
 AW18 - CR4033UM18W / Jersey Mix Crew
 AW18 - CR2020MR18W / Remade Parachute Joggers
 AW18 - CR6009UM18W / Squid Scarf



AW18 - CR1049MR18W / Remade Immersion Anorak
 AW18 - CRU005UM18W / Do Not Use Once Knit Crew
 AW18 - CR2029MM18W / Organic Denim Jeans



AW18 - CR1046WR18W / Remade Immersion Anorak
 AW18 - CRU4239 CR / FINISTERRE / Albatross T-Shirt
 AW18 - CR2027MM18W / Womens Ruched Ripstop Trouser
 AW18 - CR6010UM18W / CR Scarf



AW18 - FM546 CR x FINISTERRE / Wadded Long Line Coat
 AW18 - FM4239 CR / FINISTERRE / Albatross T-Shirt
 AW18 - FM272 CR x FINISTERRE / Selvedge Jeans
 AW18 - FU7106 CR x FINISTERRE / Waterproof Bag
 AW18 - FING015UM18W / Albatross Beanie



AW18 - CR1041MM18W / Ruched Ripstop Overcoat
 AW18 - CR3007MM18W / Ruched Shirt Dress
 AW18 - FING008WM18W / Albatross Roll Neck



AW18 - FM548 CR x FINISTERRE / Wadded Bomber
 AW18 - FM3133 CR x FINISTERRE / Hoodie
 AW18 - FM272 CR x FINISTERRE / Selvedge Jeans



AW18 - FM4238 CR x FINISTERRE / Instruction T-Shirt
 AW18 - FM283 CR x FINISTERRE / Waterproof Trousers
 AW18 - FMG75 CR x FINISTERRE / Waterproof Parka
 AW18 - FU7106 CR x FINISTERRE / Waterproof Bag



AW18 - FM548 CR x FINISTERRE / Wadded Bomber
 AW18 - FING008WM18W / Albatross Roll Neck
 AW18 - FM265 CR / FINISTERRE / Waterproof Trousers
 AW18 - CR7026UR18W / Remade Safety Bag



AW18 - CR1059MR18W / Remade Winchman Anorak
 AW18 - CRU005UM18W / Squid Knit Crew
 AW18 - CR2020MR18W / Remade Parachute Joggers
 AW18 - CR6013UM18W / Squid Knit Beanie



AW18 - CR1062MR18W / Remade Immersion Coat
 AW18 - CR1043MM18W / Mens Ruched Ripstop Coat
 AW18 - CR2029MM18W / Organic Denim Jeans
 AW18 - CR6013UM18W / Squid Knit Beanie



AW18 - CR x Palladium / Pampa Buggy Safety Pack



AW18 - CR6014UM18W / CR Beanie



AW18 - CR7016UR18W / Remade Russian Blanket Tote



AW18 - CR7022UR18W / Remade Blanket Bumbag



AW18 - CRU7007-R / Remade Safety Pack Bag



AW18 - CR x Palladium / Pampa Recrow Knit



AW18 - CR6013UM18W / Squid Knit Beanie
AW18 - CR6012UM18W / Shark Knit Beanie



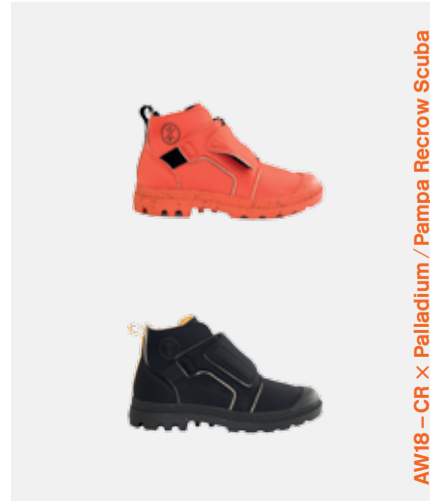
AW18 - CR7027UR18W / Parachute Tote Bag



AW18 - CR7017UM18W / Ripstop RÆ Bag



AW18 - CR7026UR18W / Remade Safety Bag



AW18 - CR x Palladium / Pampa Recrow Scuba



AW18 - CR9001UR18W / Remade Giant Squid Mascot



AW18 - CR6010UM18W / CR Scarf



AW18 - CR7010UR18W / Remade Blanket RÆ Bag



AW18 - CR7024UR18W / Winchman Bumbag



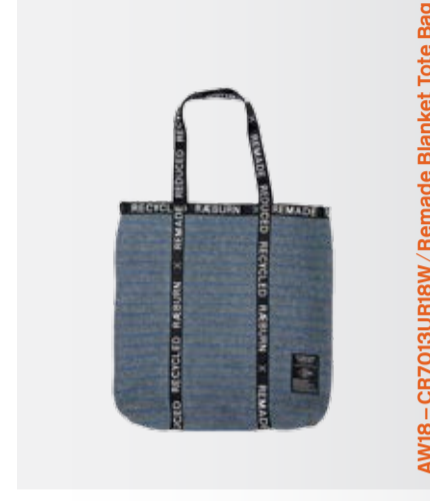
AW18 - CR x Palladium / Pampa Night Night Squid - Waterproof
AW18 - CR x Palladium / Pampa Night Night Squid - Waterproof
AW18 - CR x Palladium / Pampa Night Night Squid - Waterproof



AW18 - FU7106 CR x FINISTERRE / Waterproof Bag



AW18 - CR6009UM18W / Squid Scarf
AW18 - CR6008UM18W / Shark Scarf



AW18 - CR7013UR18W / Remade Blanket Tote Bag



AW18 - CR7023UM18W / Large Fluffy Bumbag







FOR INFORMATION ON BOOKING APPOINTMENTS TO VIEW THE COLLECTION, PLEASE CONTACT
 sales@christopherraeburn.co.uk
 +44 (0)208 5109 689

FOR PRESS ENQUIRIES, PLEASE CONTACT
 EXPOSURE
 Daniel Somner
 daniel.somner@exposure.net
 +44 (0)207 9077 228

COLLABORATION APPAREL
 Finisterre x Christopher RÆBURN
SHOES Palladium x Christopher Ræburn
CATWALK IMAGES Catwalking.com
STYLING Také Sato
CASTING Ben Grimes Casting

CAMPAIGN IMAGES Jean-Vincent Simonet
ART DIRECTION & GRAPHIC DESIGN
 Régis Tosetti & Simon Palmieri
PRINT Newspaper Club

MODELS Zach Norton (AMCK); Jai P (D1 Models); Tatun N, Max Fiesch, Finnlay Davis (Elite); Frankie Mason, Frankie Mason (IMG); Pia Priewe (Linden Staub); James Kakonge (Models 1); Christopher Fernandez, Wonil, Tex (NEXT); Maddy Rich, Junior Choi, Akeem, William (SELECT); Bibi, Isaac Main, Juliet Soane, Hector Diaz, Bibi (STORM); Nicholas Rokne, Hugo De Groot, Tsubasa (The Squad); Leon D, NA (Tiad)

SPECIAL THANKS
 The British Fashion Council
 Finisterre
 Palladium

FOLLOW US
 @StudioRaeburn
 @ChristopherRaeburn
 @StudioRaeburn

SUPPORTED BY



Retail Branding and Information Solutions

