

Christopher
RÆBURN

Autumn/Winter 2015

RA

HEIT

christopherraeburn.co.uk

For Autumn/Winter 2015 Christopher Ræburn's collection draws inspiration from survival, endurance and immersion, with the aptly named collection

RAIFT

THE
 MASCOT
 THE
 SHARK
 THE
 OCEAN

The concept emerged through an exploration of the lives of a group of men adrift on the open ocean, endeavouring to survive the cruel hardships and formidable conditions aboard a life raft.

Style and purpose remain at the forefront of this season's offering but are carefully balanced with a playful exploration of fabrication, technique and colour.

As always the **REMADE** category encapsulates the seasonal concept. An original life raft has been re-appropriated to create a stand out limited edition collection of bright and graphic outerwear and accessories. The **REMADE** paneled parka and bomber create a playful explosion of yellows and oranges, making use of the upper section of the raft, which is designed to attract attention at sea.

In contrast an all black rubber field jacket is crafted from the underside of the raft and features original graphics, which are replicated in various styles and fabrications across the collection.

Keeping with the life raft as inspiration, latex rubber is used to create unique inflatable outerwear; a new puffer jacket and gilet in bold reds and blues inject entertaining and unusual silhouettes into the collection. Ræburn's ongoing interest in and commitment to quintessentially British textiles is evident in Raft, showcased through

a range of garments produced using Bonded Cotton and Hainsworth wools. The puffer jacket reappears in a more conventional but eminently wearable form, whilst the addition of a Peacoat demonstrates Ræburn's appreciation for more traditional menswear design.

Continuing the partnership with The Woolmark Company, luxury Merino knitwear comes in two seasonal designs, one featuring the highly topical mascot for AW15, a shark, and the other picking up the arrow graphic from the original life raft. The Hybrid hoodie, fast becoming a Ræburn classic, is re-imagined using a heavy textured fleece creating a dynamic contrast with the lightweight Merino jersey.

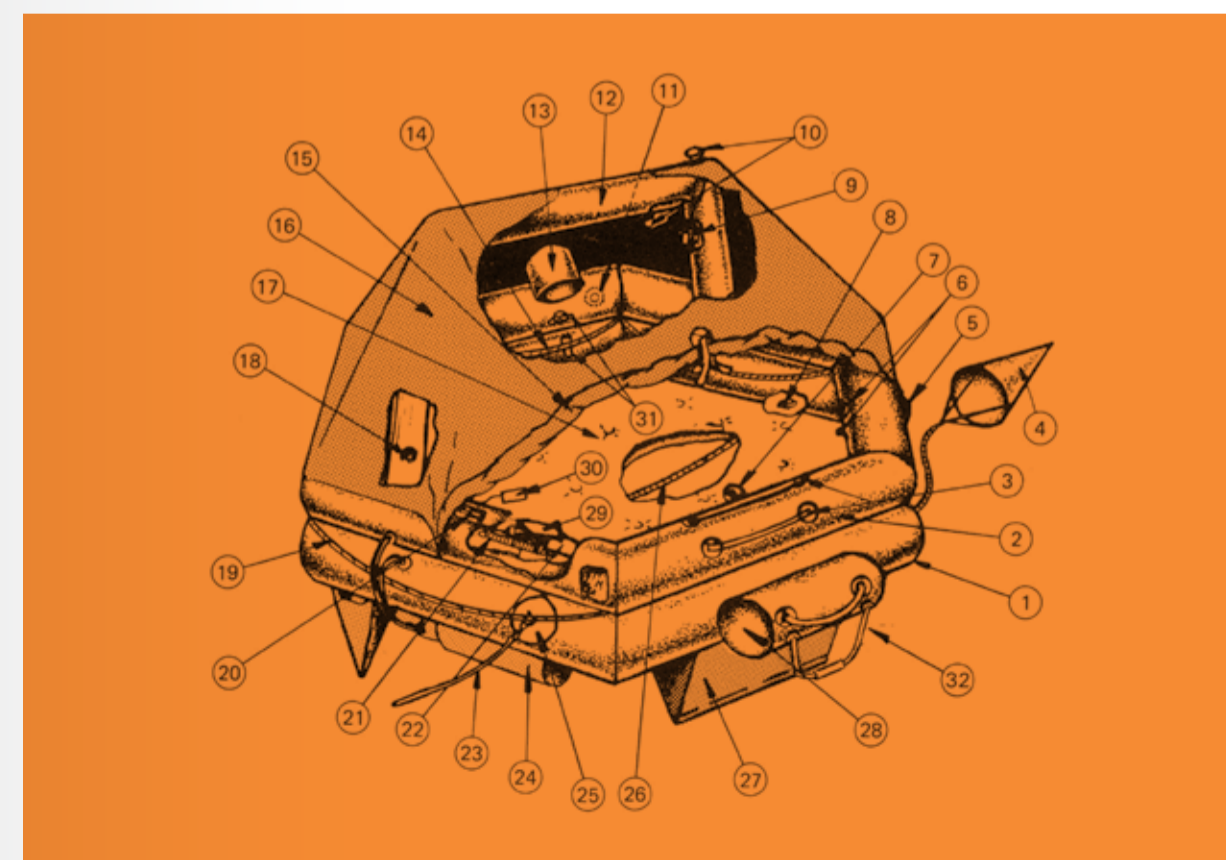
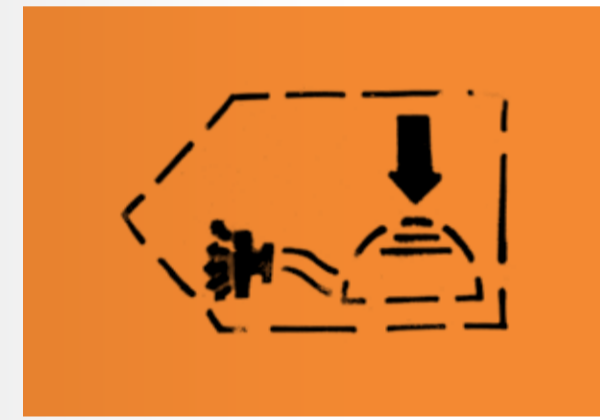
A uniquely beautiful Japanese wool denim is a stand out fabric for the season, featured in a fleece lined jean jacket and distinctive combat pants, a completely new addition to the Ræburn legwear category.

Prints continue to play a pivotal role in the aesthetic. The shark and the shark's tooth are used as motifs for the season, masterfully integrated into digital prints and applied to sweat shirts, t-shirts and joggers. The shark tooth is also referenced in photo real woven patches applied to garments across the collection and marks the ongoing partnership with Avery Dennison RBIS to develop unique

and innovative embellishment techniques and branding.

The lightweight and quilted outerwear has evolved for AW15 to feature a new quilt design on the body with contrast sleeves in the classic Ræburn zig-zag pattern. The quilted duffel coat has been perfected and features an eye catching rust print on high quality Italian nylon, which can also be seen in the updated Ræburn mac and parka.

New developments in the accessories collection include the **REMADE** rucksack, which uses the original coloured paneling from the raft and retains authentic graphic detailing and an oversized Shark holdall, a completely new take on the Ræburn animal bag concept. Alongside these stand out pieces there is a new more accessible take on the Ræburn rucksack in Bonded Cotton. The best selling lightweight accessories have evolved to include a multi functional packaway tote in various seasonal fabrications, which can be transformed into a rucksack, alongside a packaway holdall. This season Christopher Ræburn also ventures into footwear, collaborating with premium footwear brand Purified to create an exclusive boot and a shoe to complement the AW15 collection.







AW15 - MRP / Remade Parka
AW15 - MT / Simple Cargo Pants



AW15 - MRBOM / Remade Bomber
AW15 - MKAJ / Arrow Jumper
AW15 - MT / Trouser



AW15 - MRRJ / Remade Raft Jacket
AW15 - MKSJ / Shark Jumper



AW15 - MJ / Technical Jacket
AW15 - MKAJ / Arrow Jumper
AW15 - MT / Simple Cargo Pant



AW15 - MA / Anorak
AW15 - MFC / Fleece Crew
AW15 - MT / Trouser
AW15 - MKSS / Shark Scarf



AW15 - MQG / Quilted Gilet
AW15 - MKSJ / Shark Jumper
AW15 - MT / Trouser



AW15 - MQG / Quilted Gilet
AW15 - MKAJ / Arrow Jumper
AW15 - MT / Trouser



AW15 - MWPC / Wool Pea Coat
AW15 - MC / Crew
AW15 - MSTs / Shark Tooth Shirt
AW15 - MT / Trouser



AW15 - MWBOM / Wool Bomber
AW15 - MQG / Quilted Gilet
AW15 - MSTs / Shark Tooth Shirt
AW15 - MT / Trouser



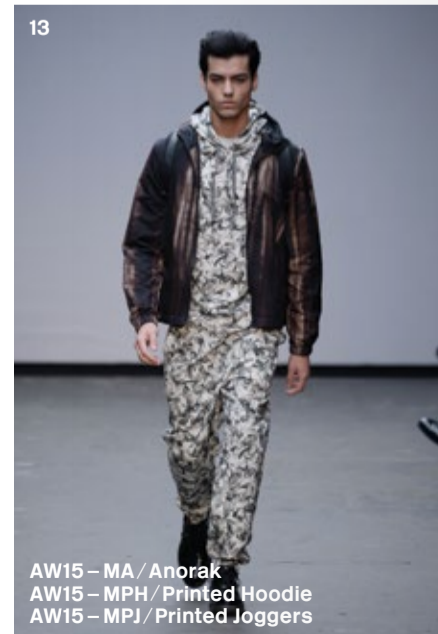
AW15 - MH / Hoodie
AW15 - MSTs / Shark Tooth Shirt
AW15 - MQG / Quilted Gilet
AW15 - MT / Trouser



AW15 - MODUF / Quilted Duffel
AW15 - MT / Trouser



AW15 - MP / Technical Parka
AW15 - MSS / Shark Jumper
AW15 - MT / Trouser



AW15 - MA / Anorak
AW15 - MPH / Printed Hoodie
AW15 - MPJ / Printed Joggers



AW15 - MKSJ / Shark Jumper
AW15 - MDS / Denim Shirt



AW15 - MFH / Fleece Hybrid
AW15 - MPR / Printed Raglan
AW15 - MJOG / Joggers



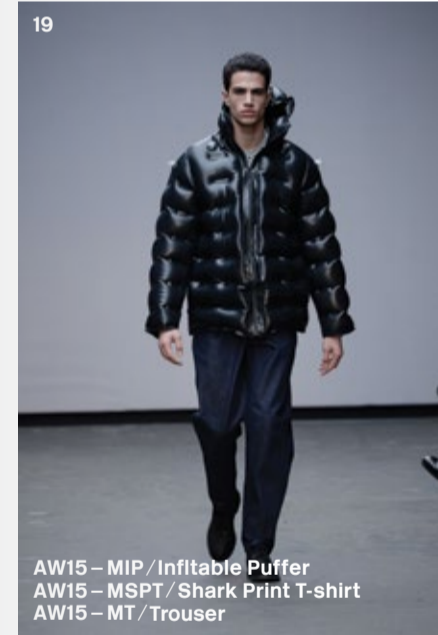
AW15 - MDJ / Denim Jacket
AW15 - MKAJ / Arrow Jumper
AW15 - MKSS / Shark Scarf



AW15 - MDP / Denim Puffer Jacket
AW15 - MFH / Fleece Hybrid
AW15 - MT / Trouser



AW15 - MJ / Technical Jacket
AW15 - MFFBOM / Fuax Fur Bomber
AW15 - MT / Trouser



AW15 - MIP / Inflatable Puffer
AW15 - MSPT / Shark Print T-shirt
AW15 - MT / Trouser



AW15 - MIG / Inflatable Gilet
AW15 - MFC / Fleece Crew
AW15 - MT / Trouser



AW15 - MIP / Inflatable Puffer
AW15 - MKSJ / Shark Jumper
AW15 - MT / Trouser



AW15 - MQBOM / Quilted Bomber
AW15 - MFFC / Fuax Fur Crew
AW15 - MT / Trouser
AW15 - MKSS / Shark Scarf



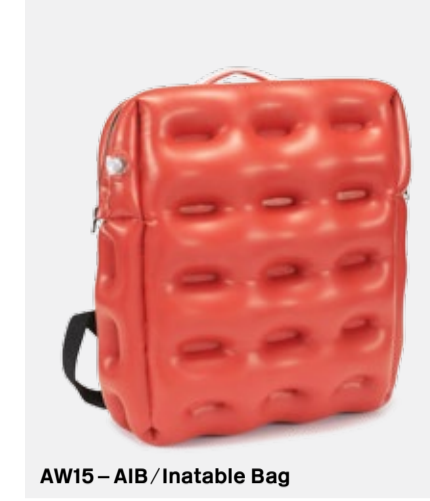
AW15 - MIG / Inflatable Gilet
AW15 - MFC / Fleece Crew
AW15 - MT / Trouser



AW15-ARR/Remade Rucksack



AW15-ARRB/Remade Raft Bag



AW15-AIB/Inatable Bag



AW15-AR/Rucksack



AW15-ACR/Compact Rucksack



AW15-ACR/Compact Rucksack



AW15-APACH/Packaway Holdall



AW15-APACH/Packaway Holdall



AW15-APACR/Packaway Rucksack



AW15-APACR/Packaway Rucksack



AW15-APACR/Packaway Rucksack



AW15-APACT/Packaway 2way totes



AW15-APACT/Packaway 2way totes



AW15-APACT/Packaway 2way totes



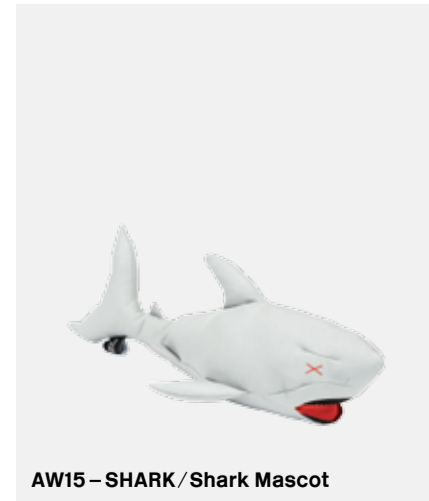
AW15-APACT/Packaway 2way totes



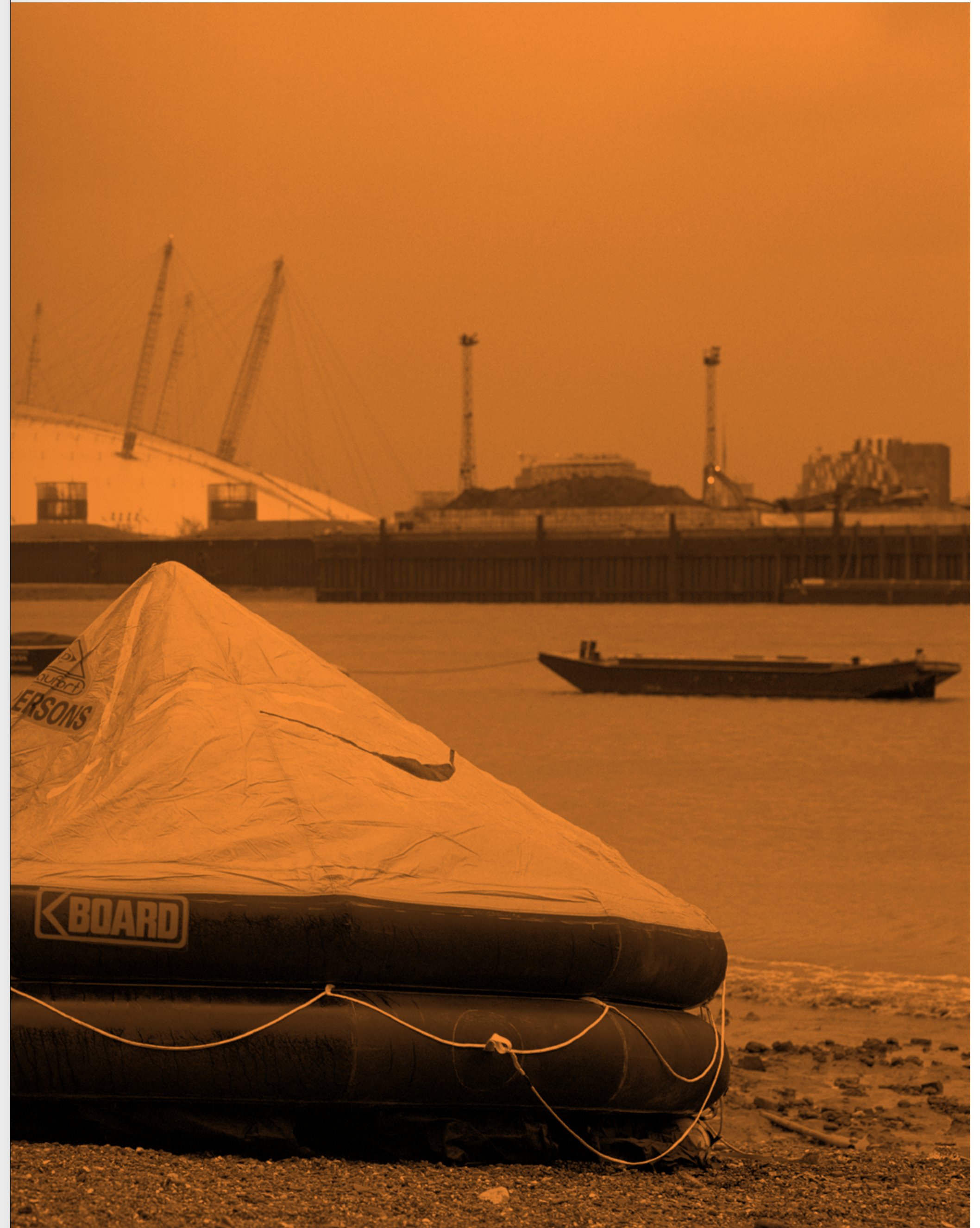
AW15-MFWC/Fleece winter Cap

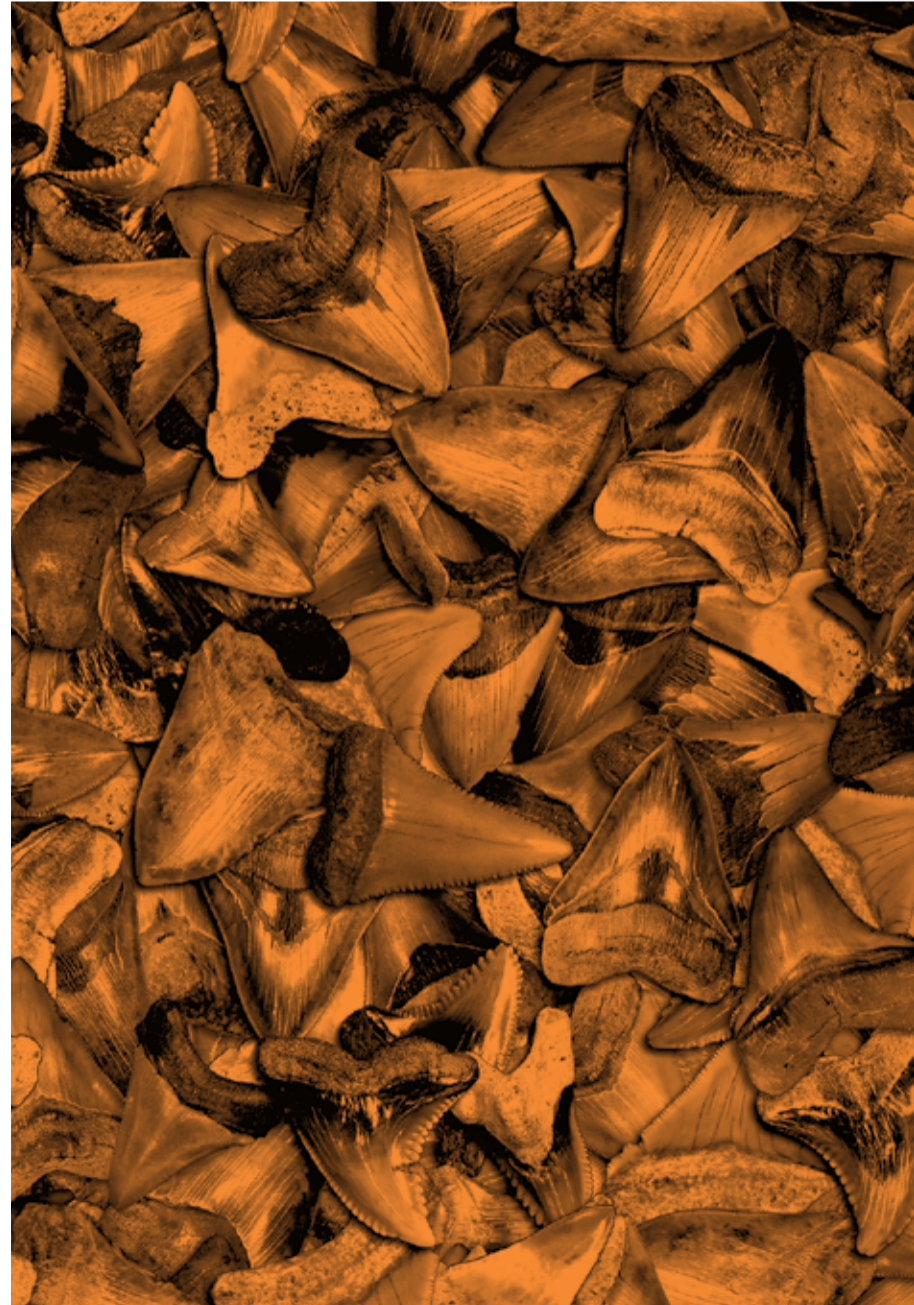


AW15-ASB/Shark Bag



AW15-SHARK/Shark Mascot





For information on booking appointments to view the collection, please contact:
TOMORROW SHOWROOM
 Tim Sturmheit
 tim@tomorrowtld.com
 +44 (0) 20 7033 7710

For press enquiries, please contact:
EXPOSURE
 Suweyda Abdulle
 suweyda.abdulle@exposure.net
 +44 (0) 20 7307 9519

Art Direction / Graphic Design: Régis Tosetti & Simon Palmieri
 Catwalk Photography: catwalking.com
 Photography: Thomas Zanon-Larcher, Sam Scott-Hunter
 Styling: Elgar Johnson
 Casting: Sarah Bunter
 Models: Ashton (AMCK) / George E (FM) Aleksander (Models 1) / Lewis CG, Josh B, Khary B, Thibault (Nevs) / Antonino, Kesse, Lucas M (Premier) Robert M (Select) / Lucas C, Bram (Supa)
 Print: Newspaper Club

→ FOLLOW US
 Christopher-Raeburn
 @christopherraeburn
 StudioRaeburn

Supported by:





AWW

EES

C
X
R