

Christopher RÆBURN

FREEZE Autumn / Winter 2012



Evolving the concept of urban protection, Christopher Raeburn's Autumn / Winter 2012 collection is aptly named 'Scorch'. The innovative range features hero garments crafted from reappropriated Nomex, the fireproof textile. Saturated in subtle detailing and broadened to include accessories, the collection is a refined demonstration of masculine and functional fashion.

→ REMADE

The core principle of the Christopher Raeburn brand, every limited edition garment in the Remade range is a hand-crafted demonstration of quality. This season Nomex is re-appropriated from fire fighter's trousers, translating into enduring thermal garments with water and fireproof properties. The range features outerwear staples, including a Parka with double entry pockets, reflective trims and a soft brushed cotton lining. The Remade Bomber and Biker are instant favourites, both with original fire uniform references such as cuff fastenings and shoulder detailing. The Suit Jacket is produced from dead stock Nomex and introduces a tailoring element to the collection.

→ BRITISH

Reaffirming his staunch commitment to supporting British textiles, this season Christopher Raeburn utilises two West Yorkshire wool sources, Hainsworth and Moon. The stand out piece is the Wool Bomber, available as a vibrant orange or classic charcoal fitted piece. The Duffle coat makes a welcome reappearance, newly available in orange or charcoal, though still retaining important details such as parachute cord toggles. The Wool Parka cleverly incorporates Nomex patches to offer a textured and functional garment.

→ LIGHTWEIGHT

The original Raeburn range, the signature lightweight garments are offered in a broader group of styles. Each piece is filled using only PrimaLoft, a thermally efficient recycled material. The Lightweight range includes a Hoodie and Gilet, both trimmed with a reflective tape and lined with cotton jersey, made in Leicester. Another highlight in the collection is a patterned Zig Zag Quilted Jacket, a perfect transitional piece.

→ JERSEY

An offering of layering staples, the Jersey range includes a Pullover with a shielding collar front, a winter necessity. Printed tees complete the range, inspired by reflective designs in Chevron or Square patterns.

→ ACCESSORIES

Long-awaited accessories are finally available and exemplify outstanding utility. Mirrored in womenswear but crafted in masculine proportions, the made in London range of bags includes a contemporary Rucksack with a detachable secondary external bag. The colour palette complements the collection, a Holdall available in bright orange or classic charcoal. Compartments for iPads and considered adaptability deliver function in every piece.

Christopher Raeburn is a NEWGEN MEN and British Fashion Award winner.



AW12 - MWBOM / Wool Bomber



AW12 - MRBOM / Remade Bomber



AW12 - MWDUF / Wool Duffle Coat



AW12 - MLP / Lightweight Parka

For information on booking appointments to view the collection, please contact: www@christopherraeburn.co.uk
 For further information, please contact:
 Exposure Edit,
 Tel: +44 (0) 20 7907 7100
hugh.gallagher@exposure.net

Design: Neila Tosetti, London
 with Simon Palmeri
 Photography: Ryan Hopkinson,
 Cameron McNeil, Sam Scott-Hunter
 Womenswear model: Franah al Union
 Menswear Model: Curtis Rivers
 Print: White Print Consultants Ltd

Supported by:

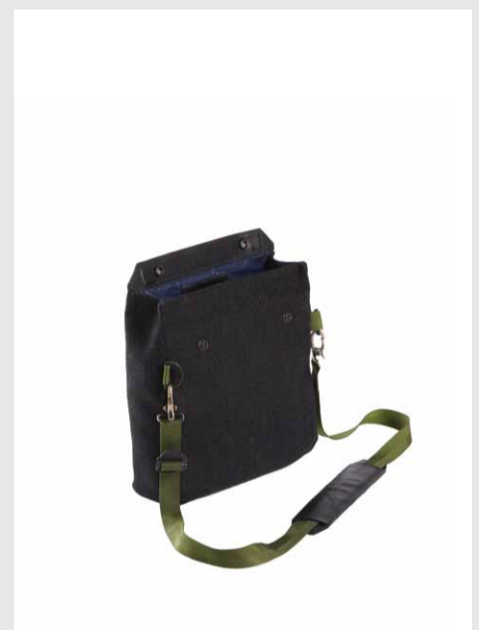
VICTORINOX
 BRITISH FASHION COUNCIL
NEWGEN
 TOPSHOP
 CFE CENTRE FOR FASHION ENTERPRISE



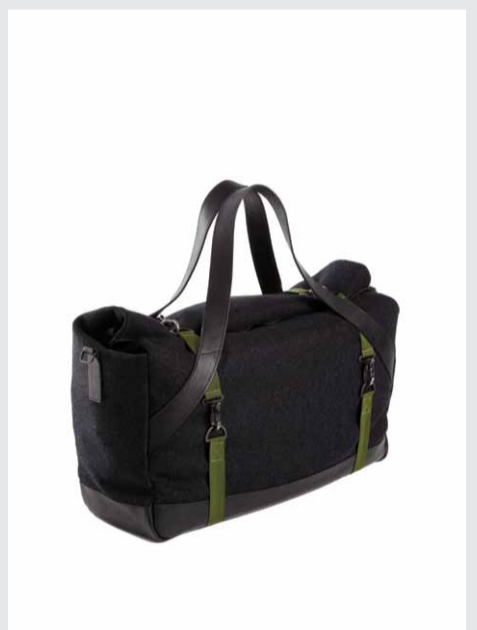
AW12 - WTOTE + Outer / Leather Tote Bag



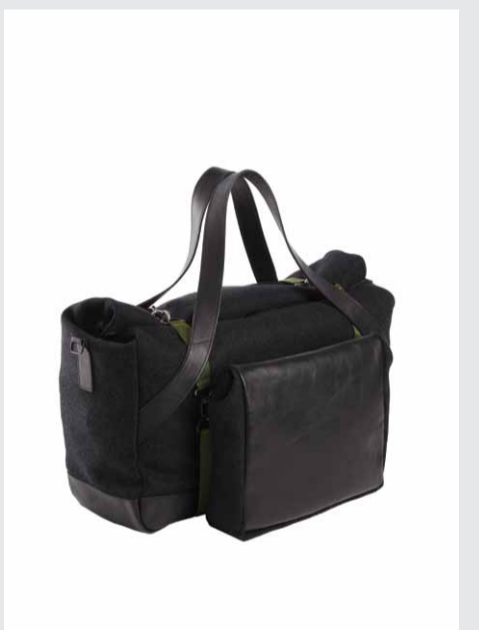
AW12 - Badger / R-Badger



AW12 - MPKT / Pocket Bag



AW12 - MHOLD / Holdall



AW12 - MHOLD + P / Holdall + Pocket

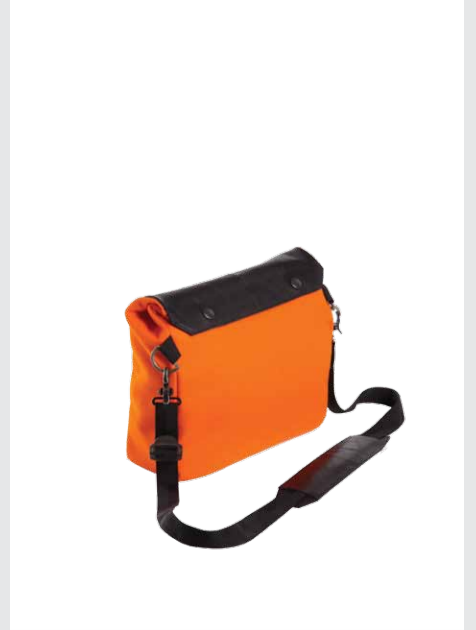


AW12 - MRUCK + P / Filled Rucksack + Pocket

Accessories



AW12 - WTOTE / Tote Bag



AW12 - MPKT / Pocket Bag



AW12 - WDRAW / Drawstring Bag



AW12 - MLFH + MLFG / Lightweight Filled Hoodie + Gilet



AW12 - MLH / Lightweight Hoodie



AW12 - MLP / Lightweight Parka



AW12 - MRBKR / Remade Biker



AW12 - MJCHEV / Chevron T-shirt



AW12 - MLFG / Lightweight Filled Gilet



AW12 - MNSJ / Nomex Suit Jacket

Autumn / Winter 2012 is Christopher Raeburn's most feminine collection yet. Inspired by the depths of winter, every garment in 'Freeze' characteristically serves both purpose and design. Evolved over several seasons, Raeburn's core ranges 'British', 'Lightweight' and 'Jersey' are now complemented by a range of long-awaited accessories. A newly refined collection marks the marriage of feminine design to the brand's unique principles.

→ BRITISH
Reaffirming his staunch commitment to supporting British textiles, this season Christopher Raeburn utilises two West Yorkshire wool sources, Hainsworth and Moon. The offering introduces new women's separates alongside the welcome return of Autumn / Winter staples. Building on Spring / Summer's launch of ready-to-wear, wool dresses and skirts in a feminine silhouette add new dimension to the Christopher Raeburn brand. For outerwear, the popular Women's Bomber reappears in two forms, one ribbed collar and one hooded, both with brushed cotton linings and new trims. The Skater Coat has been redesigned with a neater shape and sharper shirt collar. A distinctive military note is never far, apparent in the herringbone wool fabric and regimental trims.

→ LIGHTWEIGHT
The original Raeburn range, the signature lightweight garments are offered in a broader group of styles. Each piece is filled using Eco-PrimaLoft, a thermally efficient recycled material. The range includes outerwear classics such as gilets, bombers and duffels. Trimmed with taping and zips, many come in a zig zag patterned quilt and are finished with a shielding collar front, a winter necessity. The flawless Pop Out parka reappears untouched, though the inner is now available separately in a range of complementary colours. Function is embodied in the Cross Back Parka, featuring adjustable parachute cord strings.

→ JERSEY
A relaxed offering of staple pieces, the Jersey range includes long sleeved dresses and simple tees. Pencil skirts complement the wool outerwear, available in a two tone of dark jersey and wool herringbone. Every garment in the Jersey range is produced in organic cotton.

→ ACCESSORIES
Long-awaited accessories are finally available and exemplify outstanding utility. Mirrored in menswear but crafted in feminine proportions, the range includes a contemporary Tote with a secondary external bag. The colour palette complements the collection, a Pocket bag available in woolen charcoals and a Holdall in tonal brights. Compartments for iPads and considered adaptability deliver function in every piece.

Christopher Raeburn is a NEWGEN MEN and British Fashion Award winner.



AW12 - WIC / Wool Parka



AW12 - WLDS / Lightweight Draw Sleeve



AW12 - WJUMP / Jumpsuit



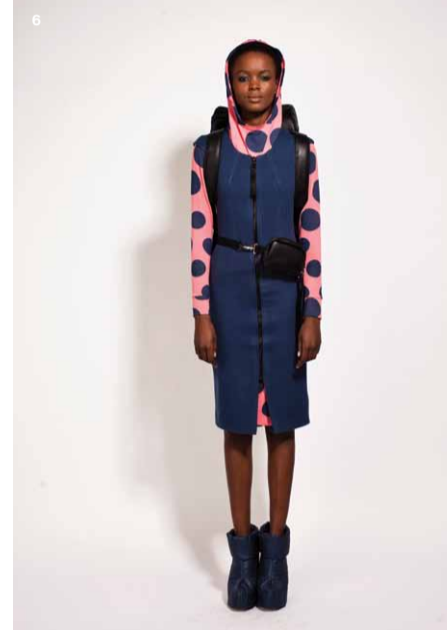
AW12 - WWCS / Wool Cap Jacket



AW12 - WLD / Lightweight Dress



AW12 - WWPS / Wool Pencil Skirt



AW12 - WWZD / Wool Zip Front Dress



AW12 - WLP / Lightweight Parka



AW12 - WJPUL / Jersey Pullover



AW12 - WLP / Lightweight Parka



AW12 - WLDUF / Zig Zag Duffie Coat



AW12 - WHBOM / Wool Bomber



AW12 - WJSPTS / Jersey Spot Skirt



AW12 - WWSK / Wool Skater Coat



AW12 - WWBOM / Wool Hooded Bomber



AW12 - WJD / Jersey Ribbon Dress



AW12 - WLLG / Lightweight Long Gilet



AW12 - WLBOM / Zig Zag Bomber



AW12 - WHBOM / Wool Bomber



AW12 - WLCRW / Lightweight Crew Neck



AW12 - WLLXB / Long Cross Back Coat