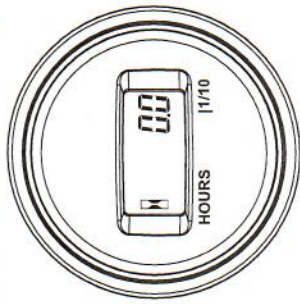


OPERATING INSTRUCTIONS

AC/DC Hour Meter



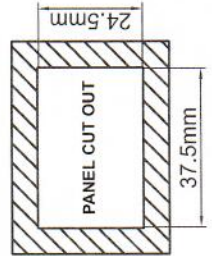
1. Please use the product accordance with the user manual strictly.
2. Please do not try to disassemble the main unit and its accessories.
3. This product can not be used in deep water.
4. Fierce vibration and strong impact may make the product failure.
5. Little error will be happened when measuring, so the value is not exactly same when compared to the same model products.

PRODUCT ACCESSORIES LIST

- Operating instruction *1
- Insert spring *2
- Insert spring sheath *2
- Buffer rubber pad *1

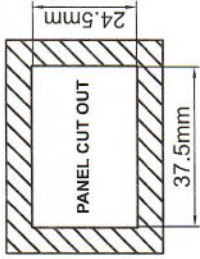
PRODUCT INSTALLATION

1. Drill a mounting hole as below in the installation location.



PRODUCT INSTALLATION

1. Drill a mounting hole as below in the installation location.



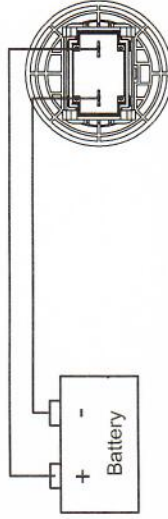
2. Product fixation

Put the hour meter into mounting hole, and use the snap joint to fasten the meter.



3. Signal connection.

Connect the two terminals (non-polarized) in the back of the meter to the external power source, turn on the external power supply and the hourglass flashes, which means that the product is installed correctly. (voltage range AC/DC 5-277V)



PRODUCT USAGE

1. **Total running hours:** When the product has detected the signal for 1s continuously, start timing and the hourglass flashes on screen. The timing way is counting up, the initial value is 0, the max timing value is 99999H.
2. **Display resolution:** When total running hours in range 0.0-9999.9H, the resolution hour is 0.1H; when total running hours in range 10000-99999H, the resolution hour is 1H.



PRODUCT SPECIFICATION&PARAMETER

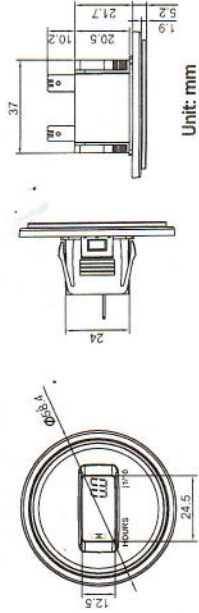
ROAD RUNNER CONNECT, INC.

ITEM	PARAMETER & INTRODUCTION
Total hours range	0-99999H
Display mode	LCD
Display window size	24.5mmx12.5mm
Battery type	CR2050 360mAh
Product tize	φ58.4mmx37.1mm
Waterproof rate	IP68
Working voltage	AC/DC 5-277V
Product net weight	34g

TROUBLE SHOOTING

Problem	Possible reasons	Solutions
Hourglass does not flash	<ol style="list-style-type: none"> 1. Working voltage is not in the correct operating voltage range. 2. Wrong connection of power wires. 	<ol style="list-style-type: none"> 1. Check if the voltage is within the specified voltage range. 2. Connect the power wires.
LCD display unclear or LCD discolor	<ol style="list-style-type: none"> 1. Installation angle is wrong. 2. Direct sunlight for a long time. 	<ol style="list-style-type: none"> 1. Adjust the installation angle. 2. Place the product under the shade.

PRODUCT DIMENSION



Unit: mm



CE RoHS