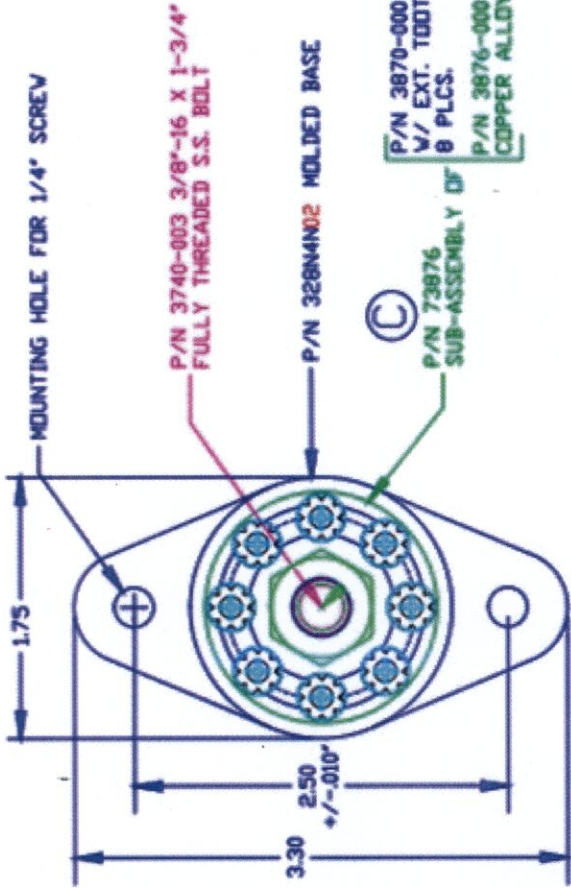


DO NOT SCALE



P/N 3740-003 3/8"-16 X 1-3/4" FULLY THREADED S.S. BOLT

P/N 328N4N02 MOLDED BASE

P/N 73876 SUB-ASSEMBLY (C)

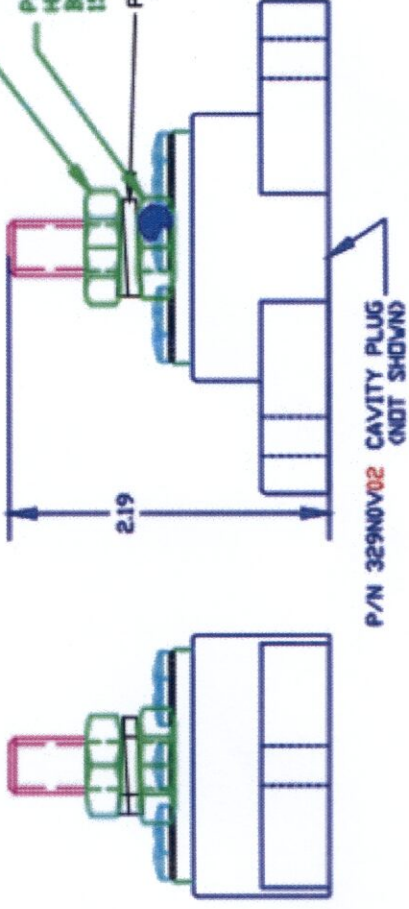
P/N 3870-000 #8-32 X 5/16" PAN PHILLIPS SEMS W/ EXT. TOOTH WASHER STAINLESS 8 PLCS.

P/N 3876-000 3/8" NICKEL PLATED COPPER ALLOY CONTACT DISK

P/N 3844-003 STAINLESS STEEL HEAVY HEX JAM NUT (B) (D)

P/N 2844-000 TIN PLATED BRASS HEAVY HEX JAM NUT BOTTOM NUT FACTORY ASSEMBLED TO 15 FT./LBS (180 IN./LBS.)

P/N 3638-000 3/8" S.S. SPRING LOCK WASHER



P/N 329N0V02 CAVITY PLUG (NOT SHOWN)

INCLUDES P-16808110001 BLUE DOT MULTI LABEL, 1 PER CONTAINER  
 BASE MATERIAL: GLASS-REINFORCED NYLON  
 BASE MATERIAL U.L. RATING: 94 HB  
 BUS MATERIAL: NICKEL PLATED COPPER ALLOY  
 VOLTAGE RATING: 48 VOLTS DC MAX.  
 BUS AMPERAGE RATING: 160 AMPS DC ( 8 X 20 AMP CIRCUITS )  
 TEMPERATURE RISE AT LOAD: 27.9 DEG. C. (52 DEG. F.)  
 RECOMMENDED MAXIMUM TORQUE: 12 FT./LBS. (144 IN./LBS.)

TOLERANCE UNLESS OTHERWISE SPECIFIED: ±.0007/±0.00mm  
 RADIAL DIAMETERS TO BE MEASURED OVER MANDRELS,  
 SING GAGES OR PIN GAGES OF SUITABLE SIZE



Road Runner Connect, Inc.  
 405 Industrial Drive  
 Carmel, IN 46032

Telephone: (317) 571-1911 Fax: (317) 571-1915

REF: <b>REXX</b>	DATE:	DRN BY:	WEIGHT:
		CHK'D BY:	<b>REXX</b>
TITLE: <b>3/8" Red J-Block-8</b>		SCALE: <b>NONE</b>	
MATERIAL: <b>NOTED</b>		PART NO.	
COLOR: <b>RED</b>	DRG CLASS: <b>REXX</b>	RR77837N02	