

SXS
PERFORMANCE PRODUCTS

2023
PRODUCT LINE

DRT MOTOR SPORTS



Contact Us Today

www.drmmotorsports.com

Info@drmmotorsports.com

951-422-1340 | Riverside, CA



2023

PRODUCT LINE

TABLE OF CONTENTS

POLARIS RZR PRO R

- 3 Bumpers/Grill
- 4 Tailgate
- 4 Trunk Enclosure
- 4 Adventure Rack
- 4 Oversized Tire Carrier
- 5 Wind Diffuser
- 5 Hood Scoop
- 5 Exhaust Cover
- 6 ABS Fenders
- 6 Air Intake Grill
- 6 Door Arm Rest
- 7 Grip Shifter 2.0
- 8 Sway Bar Links
- 9 Radius Rods/Plate
- 9 Door Bags

RZR PRO XP

- 11 Bumpers
- 11 Exhaust Cover
- 12 Grills/Tailgate
- 12 Trunk Enclosure
- 12 Adventure Rack
- 13 Oversize Tier Carrier
- 13 Wind Diffuser
- 13 Hood Scoop
- 14 ABS Fenders
- 14 Hold Down Grips
- 14 Door Arm Rest
- 14 Air Intake Grill
- 15 Radius Rods/Plates
- 15 Grip Shifters
- 16 Sway Bar Links

- 16 Tie Rod Kits
- 16 Door Bags

XP 1000

- 17 Bumpers
- 17 Aluminum Grill
- 18 Vented Engine Cover
- 18 Air Intake Grills
- 19 Tire Carrier
- 19 Rock Sliders
- 19 Hood Scoop
- 20 Trunk Enclosure
- 20 Grip Shifter 2.0
- 20 Grab Bar
- 21 ABS Fenders
- 21 Radius Rod Plate
- 22 Tie Rod Kits
- 22 Sway Bar Links

RANGER XP

- 23 Bumpers
- 25 Hood Rack

RZR 170

- 26 Rear Wing Spoiler
- 26 Intake Scoop

CAN-AM X3 MAVERICK

- 29 Bumpers
- 29 Gusset Kit
- 29 Aluminum Grill
- 30 Wind Diffuser
- 30 Radius Rod Plate

- 30 Hitch Mount
- 31 ABS Doors/Fenders
- 32 Billet Rod Plate
- 32 Shock Tower Brace
- 32 Door Handle Kit
- 32 Shift Knob Gate
- 33 Rock Sliders
- 33 Belt Tool Kit
- 34 Radius Rods
- 34 Sway Bar Links

KAWASAKI TERYX KRX

- 35 Bumpers
- 36 Hitch Receiver
- 36 Aluminum Grill
- 36 Trunk Enclosure
- 37 Air Intake Covers
- 37 Hood Scoop
- 37 Grip Shifter 2.0
- 38 Tie Rod Kits

UNIVERSAL

- 39 Steering Wheels
- 39 Billet Hub Adapter
- 40 Axle Cage Mount
- 40 Rock Washers
- 40 Y-Strap
- 41 Grip Shifter 2.0
- 41 Dry Bags
- 41 Tire Storage Bag
- 41 Apparel
- 43 Who We Are



POLARIS RZR
PRO/
TURBO **R**

SXS
PERFORMANCE PRODUCTS
2023





POLARIS

RZR
PRO/
TURBO R

DRT Motorsports equipped Pro R with our bumper, grill, fenders, and scoop products

RZRPRO R | Pro R / Turbo R Front Winch Bumper

Part # 20005FB03101

- Fits 2022+ Polaris RZR Pro R/Turbo R all models
- Steel Construction provides real protection against hard hits
- Comes with integrated winch plate
- Fits winches up to 6000lbs with maximum dimensions of 14.5" x 4.75" x 4.75"
- Easy Bolt on installation

PATENT PENDING

This Pro R Front Winch Bumper replaces the stock OE bumper. It was designed to complement the Pro R's factory lines and integrate perfectly into the factory bodywork. It adds much more strength, protection, and rigidity to the front end of your Pro R / R 4.



RZRPRO R | Pro R Rear Bumper

Part # 20005RB02101

- Fits 2022+ Polaris RZR Pro R all models
- Steel Construction provides real protection against hard hits
- Removable aluminum mesh inserts
- Easy Bolt on installation

PATENT PENDING

This Pro R Rear Bumper was designed to complement the Pro R's factory lines and integrate perfectly into the factory bodywork. The bumper adds strength and real protection to the rear end of your Pro R. Easy installation and removable/paintable mesh inserts make this upgrade a must for your Pro R.



RZRPRO R | Pro R/Turbo R Aluminum Front Grill

Part # 20005FG03101

- Fits 2022+ Polaris RZR Pro R/Turbo R all models
- Laser Cut From 6061-T6 Aluminum
- Works with OEM bull bar
- Includes Rubber knockouts for use without factory bull bar or aftermarket bumpers.
- Easy bolt on installation with no drilling required

PATENT PENDING

This Aluminum grill is an essential item to complete your UTV. It is laser cut from aluminum for a precise fitment and no drill install. This Aluminum Grill is a must for riders who want better protection and aggressive styling for their Pro R/Turbo R.



RZRPRO R | Pro R/Turbo R/Pro XP Bed Enclosure Tailgate

Part # RZRPROTG1

- Fits 2022+ Polaris RZR Pro R/Turbo R/Pro XP all models
- Closes off the bed providing a secure cargo area
- Steel construction for extra durability
- Easy installation using factory hardware
- Powder coated textured black with raw aluminum mesh inserts that remove easily for color matching

PATENT PENDING

This Bed Enclosure Tailgate is an essential for riders who want to store more cargo securely in the rear storage bed. This Tailgate fully encloses the bed to increase storage capacity and carry cargo more securely. It is extremely easy to install into factory locations with no drilling required.



RZRPRO R | Pro R Aluminum Storage/Trunk Enclosure

Part # 20005TE03101

- Fits 2020+ Polaris RZR Pro R all models
- Secures recovery gear, tools, ice chest, or anything you bring without the risk of losing your expensive gear
- Constructed from the 5052 .090 thick material for high strength load-bearing lid
- Easy Installation with no drilling required

PATENT PENDING

The Aluminum Storage/Trunk Enclosure is a must for riders who want to carry cargo more securely. It has a ceiling height of 8.0" and maintains the full width and length of the factory cargo/storage compartment. It can carry additional cargo on top of the enclosure when needed.



RZRPRO R | Pro R/Turbo R/Pro XP Tire Carrier/Adventure Rack

Part # 20005TC03101

- Fits 2019+ Polaris RZR Pro XP, and 2022+ Polaris RZR Pro R/ Turbo R all models
- Fits up to a 33" spare tire with the use of a 3-point tire tie-down
- Multiple tie-down points to fit almost any cargo you bring
- Lift assist shocks & slam latch system
- Easy Installation with no drilling required

PATENT PENDING

The Tire Carrier/Adventure Rack is an essential upgrade for every owner who needs the ability to carry a spare tire. This rack features a boxed design with tons of tie-down point options, a heavy-duty latch, and lift assist shocks. The Rack will hold up to a 33" tire securely.



RZRPRO R | Pro R/Turbo R/Pro XP Oversize Tire Carrier Mount Accessory

Part # 20005TC11101

- Fits 2022+ Polaris RZR Pro R/Turbo R/Pro XP all models
- Accessory for 20005TC03101
- All aluminum construction
- Stainless steel hardware with black finish
- Upgraded heavy duty gas shocks
- Easy bolt on Installation

PATENT PENDING

The Oversize Tire Carrier Mount Accessory is an essential upgrade for every owner who needs the ability to carry an oversized +35" diameter tire. The oversized mount lifts and pushes back the mounting position of the spare tire to clear factory cage mount points.





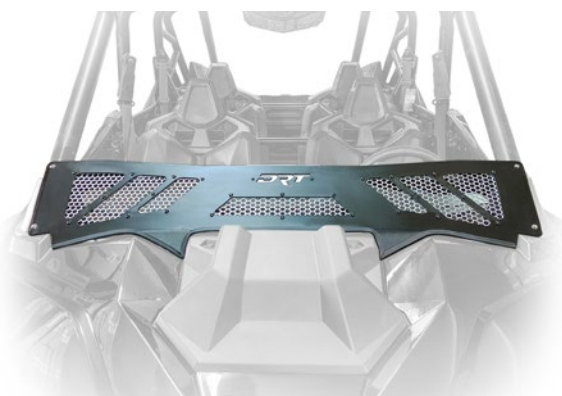
RZRPROR | Pro R/Turbo R/Pro XP Wind Diffuser

Part # 20005WDD1101

- Fits 2020+ Polaris Pro XP / 2022+ Polaris Pro R / Turbo R all models
- Mounts to lower A pillar to keep the wind and dust away from riders
- Installation requires drilling cage
- Raw aluminum mesh panels remove easily to color match to your vehicle

PATENT PENDING

The Wind Diffuser provides riders with wind protection without the hassle and heat of a full windshield. It provides the right amount of directional air flow to get the wind out of your face at high speeds and divert dust away from the riders. Beyond the functionality, the wind diffuser adds aggressive styling to your UTV.



RZRPROR | Pro R/Turbo R/Pro XP Hood Scoop

Part # RZRPROHS1

- Fits 2022+ Polaris RZR Pro R/Turbo R/Pro XP all models
- Constructed from hand-laid fiberglass with reinforced aluminum mounting locations
- Comes in a black finish that is painted or wrap ready
- Direct factory replacement with easy installation and with no drilling required

PATENT PENDING

The 2022+ Pro R Fiberglass Hood scoop is essential for riders that want their UTV to stand out with aggressive styling and a custom look. This hood scoop is constructed from hand-laid fiberglass with a glassed outer finish that is painted or wrap-ready. It is a direct replacement for your factory plastic hood cover and only takes a few minutes to install.



RZRPROR | Pro R Aluminum Exhaust Cover

Part # 20005EC02101

- Fits 2022+ Polaris RZR Pro R / R4 models
- Replaces your plastic factory exhaust cover with a vented aluminum cover for better cooling and more clearance
- Mesh panels can be color matched
- Powder coated in texture black
- Easy installation with no drilling required

PATENT PENDING

The Aluminum Exhaust Cover is a great upgrade for aggressive styling, more clearance, and better cooling for your Pro R. This Exhaust Cover replaces your factory plastic exhaust cover with a vented aluminum cover that fits close to the body and retains the center exit exhaust found only on the Pro R platform.



RZRPROR | Pro R/Turbo R/Pro XP ABS Fender Kit (front & rear)

Part # RZRPROFD1

- Fits 2022+ Polaris Pro R/Turbo R/Pro XP front all models
- Made from high impact ABS for unmatched durability
- +4" fender provides more coverage for passengers from mud and debris
- Comes in a smooth black finish to accept wrap or paint
- Some drilling is required for installation

PATENT PENDING

Note: Individual fenders available for replacement

The Pro R fender kit is an essential upgrade to your Pro R. These fenders are made from thick high-impact ABS to withstand whatever abuse you throw at them. The fenders add several inches of additional width in the front and rear, beyond the factory fenders, to keep mud and debris out of the car and passengers dry.

Front



Rear

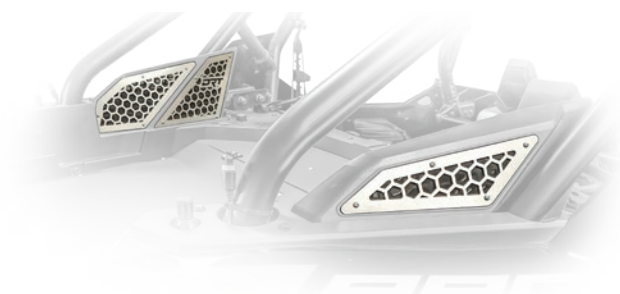


RZRPROR | Pro R/Turbo R/Pro XP Air Intake Grill

Part # RZRPROIV1

- Fits 2022+ Polaris RZR Pro R/Turbo R/Pro XP all models
- Laser Cut Aluminum Construction from 6061 T6
- Raw Aluminum finish for easy color matching
- Easy installation

The Polaris RZR Pro R Intake Vent Grills are an awesome way to upgrade the look of your Pro R. The kit comes with 6 grills to install over your factory frog skin mesh filter covers. The grills come in raw aluminum and are easily color matched to your vehicle. They are laser cut for precise fitment and an extremely easy install.



RZRPROR | Pro R/Turbo R/Pro XP Door Arm Rests

Part # RZRPROAR1 - Front

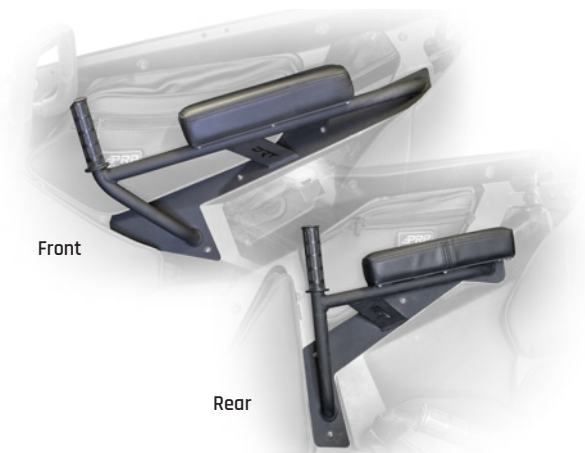
Part # RZRPROAR2 - Rear

- Fits 2022+ Polaris RZR Pro R/Turbo R/Pro R4/Pro XP all models
- Designed for driver/passenger comfort and to provide an additional gripping point for passengers
- Double Stitched Vinyl w/high-density foam pads
- Grip is replaceable with your favorite motocross grip
- Some drilling is required for installation

PATENT PENDING

The biggest complaint we hear on the Pro R is the lack of rest for your arm while driving or riding as a passenger. These armrests solve this problem with a comfortable double-stitched carbon fiber vinyl arm rest and hold-down grip. The armrests were specifically designed and positioned for riders to be able to better lock themselves down into the car at high speed or in rough terrain.

Front



Rear

DRT

Steering Wheels

Find them in the Universal Products Section on [pg. 39](#)





RZRPROR | Pro R/Turbo R/Pro XP Grip Shifter V2.0

Part # 20005SK02201

- Fits all Polaris RZR and Ranger Models
- Made from 6061 T6 Billet Aluminum
- Matte black anodized body with SS laser trim plates
- Easy Installation

PATENT PENDING

The Polaris RZR/Ranger Billet Shifter knob V2.0 is a huge upgrade over the stock plastic shifter control. This Billet Shifter Knob is CNC machined from one huge piece of aluminum for a look and feel that matches the quality and capabilities of your RZR. This version adds a Stainless Steel element & flexibility to color match your ride.



RZRPROR | Pro R/Turbo R Sway Bar Link Kit

Part # 20010SB11201

- Fits 2022+ Pro R (Front) / Turbo R (Front/Rear) all models
- Machined from aerospace grade hex bar 6061-T6 aluminum
- Military Specification Anodized finish
- 3 pieces PTFE lined Left/Right hand 5/8 chromoly rods ends
- 303 Stainless Steel rod end spacers
- Made in the U.S.A.

PATENT PENDING

This Billet Aluminum Adjustable Barrel Sway Bar Link Kit is designed to increase the strength and adjust ability of your sway bar assembly in a heavy duty and stylish package. The sway bar links also increase rigidity and reduce lateral suspension flex that is transferred from the trailing arms to the sway bar.



RZRPROR | Pro R Rear Sway Bar Link Kit

Part # 20010SB12201

- Designed for Polaris Pro R - Rear Application
- Machined from aerospace grade hex bar 6061-T6 aluminum
- Military Specification Anodized finish
- 3 pieces PTFE lined Left/Right hand 5/8 chromoly rods ends
- 303 Stainless Steel rod end spacers
- Made in the U.S.A.

PATENT PENDING

This aluminum adjustable Sway Bar Link Kit is designed to increase the strength and adjust ability of your sway bar assembly in a heavy duty and stylish package. The sway bar links also increase rigidity and reduce lateral suspension flex that is transferred from the trailing arms to the sway bar.



RZRPROR | Pro R/Turbo R Straight Hex Bar Radius Rod Set

Part # 20010RR56201

- Fits 2022+ Pro R/Turbo R Rear all models
- Machined from aerospace grade hex bar 6061-T6 aluminum
- Military Specification Anodized finish
- 3 pieces PTFE lined Left/Right hand 5/8 chromoly rods ends
- Machined pockets; laser engraved
- 303 Stainless Steel rod end spacers
- Made in the U.S.A.

PATENT PENDING

The Pro R Billet Aluminum Hex Bar Radius Rod Kit is designed to reduce weight, increase strength, and add adjust ability to your radius rods in a stylish package. These rods are manufactured in the USA on state-of-the-art CNC equipment of aerospace grade aluminum. The lower rods feature only right hand rod ends.



RZRPROR | Pro R/Turbo R 3-Piece Radius Rod Plate

Part # 20010RR93200

- Fits 2022+ Polaris RZR Pro R/Turbo R all models
- CNC Machined from 6061-T6 aluminum
- 3D Precision machined hitching loop included
- Includes replacement/upgraded radius rod bolts
- Direct bolt-on replacement for easy installation

This 3pc Modular Radius Rod Plate adds strength, reliability, and service access to your side by side all in a stylish package. The upper and lower braces are made of aerospace quality 6061-T6 billet material. A thick sheet metal plate locks the unit together.



RZRPROR | Pro R/Turbo R/Pro XP Door Bags

Part # 20005SG01401 - Front

Part # 20005SG02401 - Rear

- Fits 2022+ Pro R/Turbo R/Pro XP all models
- Convenient storage at hands reach
- Large pocket storage gloves, phone, goggles, etc.
- Made of high quality vinyl with carbon fiber accent material
- water resistant zippers to keep items dry
- Seamless installation into factory frame
- Uses factory hardware for installation
- For use with factory door frames only

PATENT PENDING

These Door Bag Sets are designed to perfectly integrate with factory door frames and add storage at your hands reach. This location is convenient and accessible while you are secured into the vehicle. These bag sets feature 2 convenient pouches to keep essential items handy. A foam knee pad to protect your knees and add comfort.



Foam knee pads are included in the lower portion of the door bag to protect your knees and add comfort.

Made of high quality vinyl with carbon fiber accent material.



POLARIS RZR
PRO XP

SXS
PERFORMANCE PRODUCTS
2023





RZR PRO XP

DRT Motorsports equipped Pro XP with our front/rear body armor and accessory products

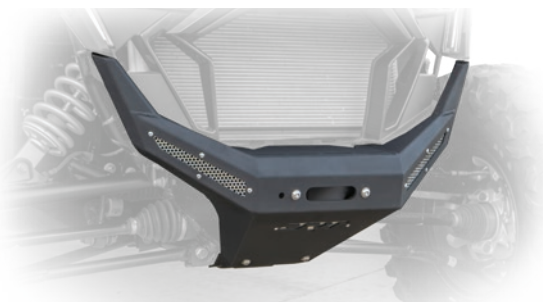
RZRPROXP | Pro XP Front Winch Bumper

Part # RZRPROFB1

- Fits 2020+ Polaris RZR Pro XP all models
- Steel Construction to provide real protection for your vehicle
- Fits winches up to 6000lbs with maximum dimensions of 14.5" x 4.75" x 4.75"
- Easy Bolt on installation

PATENT PENDING

This Front Winch Bumper replaces the stock OE bumper. It adds much more strength, protection, and rigidity to the front end of your Polaris Pro XP.



RZRPROXP | Pro XP Front Bumper/Skid Plate

Part # RZRPROFB2

- Fits 2020+ Polaris RZR Pro XP all models
- Steel construction and bolt on skid plate provides real protection for the desert and dunes
- Powder coated textured black with bolt in raw aluminum mesh grills
- Easy Bolt on installation

PATENT PENDING

The Pro XP Front Desert Bumper is made for high-speed fun in the sand or desert. It replaces the plastic stock OE bumper with a steel bumper and skid plate that will protect the front of your Pro XP from hard hits. It adds much more strength, protection, and rigidity to the front end.



RZRPROXP | Pro XP/Turbo R Rear Bumper

Part # RZRPRORB1

- Fits 2020+ Polaris RZR Pro XP/Turbo R all models
- Steel Construction to provide real protection for your vehicle against hard hits
- Removable aluminum mesh inserts
- Easy Bolt on installation

PATENT PENDING

This rear bumper will protect the rear of your Pro XP from hard hits. It adds much more strength, protection, and rigidity to the rear end of your Pro XP.



RZRPROXP | Pro XP Exhaust Cover

Part # RZRPROEC1

- Fits 2020+ Polaris RZR Pro XP and Pro XP4 all models
- Replaces your plastic factory exhaust cover with a vented aluminum cover for better cooling and more clearance
- Mesh panels are removable for color matching

PATENT PENDING

The Pro XP Exhaust Cover is a great upgrade for aggressive styling, more clearance, and better cooling for your Pro XP. It replaces your factory plastic exhaust cover with a vented aluminum cover that fits closer to the frame.



RZRPROXP | Pro XP Aluminum Grill

Part # 20005FG04101

- Fits 2020+ Polaris RZR Pro XP all models
- Laser Cut From 6061-T6 Aluminum
- Works with OEM bull bar
- Includes Rubber knockouts
- Easy bolt on installation with no drilling

PATENT PENDING

This Aluminum grill is an essential item to complete your UTV. It is laser cut from aluminum for a precise fitment and no drill install. This Aluminum Grill is a must for riders who want better protection and aggressive styling for their Pro XP.



RZRPROXP | Pro XP/ Pro R/Turbo R Bed Enclosure Tailgate

Part # RZRPROTG1

- Fits 2020+ Polaris RZR Pro XP/Pro R/Turbo R all models
- Closes off the bed to provide a more secure cargo area
- Steel construction for extra durability
- Easy installation using factory hardware
- Mesh inserts remove easily for color matching

PATENT PENDING

The Pro XP Bed Enclosure Tailgate is an essential for riders who want to store more cargo securely in the rear storage bed. This tailgate is extremely easy to install into factory locations with no drilling required.



RZRPROXP | Pro XP/Turbo R Aluminum Storage/Trunk Enclosure

Part # RZRPROTE1

- Fits 2020+ Polaris RZR Pro XP/Turbo R all models
- Secures recovery gear, tools, ice chest, or anything you bring without the risk of losing your expensive gear
- Constructed from the 5052 .090 thick material for high strength load-bearing lid
- Easy Installation with no drilling required

PATENT PENDING

The Pro XP Aluminum Storage/Trunk Enclosure is for those who want to carry cargo more securely. It has a ceiling height of 10.5" and maintains the full width and length of the factory storage box.



RZRPROXP | Pro XP/ Pro R/Turbo R Tire Carrier/Adventure Rack

Part # 20005TC03101

- Fits 2019+ Polaris RZR Pro XP, and 2022+ Polaris RZR Pro R/ Turbo R all models
- Fits up to a 33" spare tire with the use of a 3-point tire tie-down
- Multiple tie-down points to fit almost any cargo you bring
- Assist shocks & slam latch system
- Easy Installation with no drilling required

PATENT PENDING

The Tire Carrier/Adventure Rack is an essential upgrade for every owner who needs the ability to carry a spare tire. This rack features a boxed design with tons of tie-down point options, a heavy-duty latch, and lift assist shocks. The Rack will hold up to a 33" tire securely.





RZRPRO R | Pro XP/ Pro R/Turbo R Oversize Tire Carrier Mount Accessory

Part # 20005TC11101

- Accessory for 20005TC03101
- All aluminum construction
- Stainless steel hardware with black finish
- Upgraded heavy duty gas shocks
- Easy bolt on Installation

PATENT PENDING

The Oversize Tire Carrier Mount Accessory is an essential upgrade for every owner who needs the ability to carry an oversized +35" diameter tire. The oversized mount lifts and pushes back the mounting position of the spare tire to clear factory cage mount points.



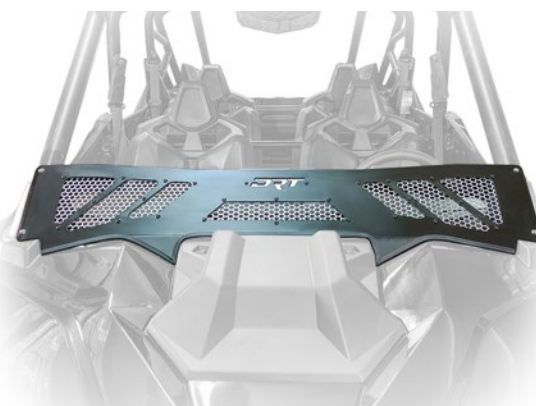
RZRPROXP | Pro XP/ Pro R/Turbo R Wind Diffuser

Part # 20005WD01101

- Fits 2020+ Polaris Pro XP/2022+ Polaris Pro R/Turbo R all models
- Mounts to lower A pillar to keep the wind and dust away from riders
- Installation requires drilling cage
- Raw aluminum mesh panels remove easily to color match to your vehicle

PATENT PENDING

The Wind Diffuser provides riders with wind protection without the hassle and heat of a full windshield. It provides the right amount of directional air flow to get the wind out of your face at high speeds and divert dust away from the riders. Beyond the functionality, the wind diffuser adds aggressive styling to your UTV.



RZRPROXP | Pro XP/ Pro R/Turbo R Hood Scoop

Part # RZRPROHS1

- Fits 2020+ Polaris RZR Pro XP/Pro R/Turbo R all models
- Constructed from hand-laid fiberglass with reinforced aluminum mounting locations
- Painted or wrap ready
- Easy installation with no drilling required

PATENT PENDING

The 2020+ Pro XP Fiberglass Hood scoop is for those that want their UTV to stand out with aggressive styling and a custom look. It is a direct replacement for your factory plastic hood cover and only takes minutes to install.



RZRPROXP | Pro XP/ Pro R/Turbo R ABS Fender Kit (front & rear)

Part # RZRPROFD1

- Fits 2020+ Polaris RZR Pro XP/Pro R/Turbo R front all models
- Made from high impact ABS for unmatched durability
- +4" fender provides more coverage for passengers from mud and debris
- Comes in a smooth black finish to accept wrap or paint
- Some drilling is required for installation

PATENT PENDING

Note: Individual fenders available for replacement

The Pro XP fender kit is an essential upgrade to your Pro R. These fenders are made from thick high-impact ABS to withstand whatever abuse you throw at them. The fenders add several inches of additional width in the front and rear, beyond the factory fenders, to keep mud and debris out of the car and passengers dry.

Front

Rear



RZRPROXP | Pro XP Rear Seat Hold Down Grips

Part # RZRPROAR3

- Fits 2020+ Polaris RZR Pro XP4 Sport Model Only
- Designed to provide an additional gripping point for passengers to secure themselves
- Grip is replaceable with your favorite motocross grip brand and color
- Easy installation with no drilling required

PATENT PENDING

The Pro XP4 Rear Seat Hold downs are essential for every rear-seat rider. Outside of the harness bar, the rear riders don't have a great place to secure themselves when riding in the rear seats. They allow these riders to anchor themselves down while riding at high speeds or in rough terrain.



RZRPROXP | Pro XP/ Pro R/Turbo R Door Arm Rests

Part # RZRPROAR1 - Front Part # RZRPROAR2 - Rear

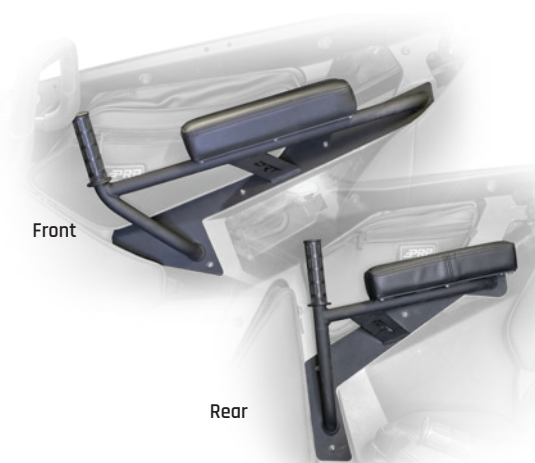
- Fits 2020+ Polaris RZR Pro XP/XP4//Pro R/Turbo R all models
- Designed for driver/passenger comfort and to provide an additional gripping point for passengers
- Double Stitched Vinyl w/high-density foam pads
- Grip is replaceable with your favorite motocross grip
- Some drilling is required for installation

PATENT PENDING

The biggest complaint we hear on the Pro XP is the lack of rest for your arm while driving or riding as a passenger. These armrests solve this problem with a comfortable double-stitched carbon fiber vinyl arm rest and hold-down grip. The armrests were specifically designed and positioned for riders to be able to better lock themselves down into the car at high speed or in rough terrain.

Front

Rear



RZRPROXP | Pro XP/ Pro R/Turbo R Air Intake Grill

Part # RZRPROIV1

- Fits 2020+ Polaris RZR Pro XP/XP4//Pro R/Turbo R all models
- Laser Cut Aluminum Construction from 6061 T6
- Raw Aluminum finish for easy color matching
- Easy installation

The Polaris RZR Pro XP Intake Vent Grills are an awesome way to upgrade the look of your Pro R. The kit comes with 6 grills to install over your factory frog skin mesh filter covers. The grills come in raw aluminum and are easily color matched to your vehicle. They are laser cut for precise fitment and an extremely easy install.



RZRPROXP | Pro XP Radius Rod Plate**Part # RZRPRORP1**

- Fits 2020+ Polaris RZR Pro XP all models
- Easy Installation with no drilling required
- Designed to be used without the rear exhaust cover Polaris PN: 5455181-070. To reuse cover, drilling and tapping radius rod plate is required.
- Powder coated semi-gloss black finish

PATENT PENDING

The Pro XP Radius Rod plate is a must for strengthening the rear suspension. This Radius Rod plate is built with thicker material and tighter tolerances than the factory radius rod plate. This helps to reduce stress on your radius rod bolts, prevent failures, and tighten your rear suspension.

**RZRPROXP** | Pro XP 3-PC Radius Rod Reinforcement Plate**Part # 20010RR92200**

- Designed for Polaris RZR Pro XP/4 applications
- CNC Machined from aerospace grade 6061-T6 aluminum
- Military Specification clear anodized finish
- Steel portion is finished in high quality powder coat
- Includes replacement/upgraded radius rod bolts
- For use with or without rear exhaust cover OEM P/N 5455181-070

This 3pc Modular Radius Rod Plate adds strength, reliability, and service access to your side by side all in a stylish package. The upper and lower brace are made of aerospace quality 6061-T6 billet material. A thick sheet metal plate locks the unit together. These points keep your suspension components locked down while the removable center steel plate allows access for service to your transmission fluid plug.

**RZRPROXP** | Pro XP/ Pro R/Turbo R Grip Shifter V2.0**Part # 20005SK02201**

- Fits all Polaris RZR and Ranger Models
- Made from 6061 T6 Billet Aluminum
- Matte black anodized body with SS laser trim plates
- Easy Installation

PATENT PENDING

The Polaris RZR/Ranger Billet Shifter knob V2.0 is a huge upgrade over the stock plastic shifter control. This Billet Shifter Knob is CNC machined from one piece of aluminum for a look and feel that matches the quality and capabilities of your RZR.

**RZRPROXP** | Pro XP Billet Barrel Quick Camber Upper Radius Rod Kit 64"**Part # 20010RR31201**

- Fits 2020+ Polaris RZR Pro XP 64" models
- Made from aerospace grade 6061-T6 aluminum
- 3 pieces PTFE lined Left/Right hand 5/8" rods ends,
- Machined wrench notch areas
- 303 Stainless Steel rod end spacers
- Made in USA

PATENT PENDING

These Billet Aluminum Barrel Upper Radius Rod Kit is designed to increase the strength and adjust ability of your OEM radius rods in a stylish package. These rods are manufactured in the USA on state-of-the-art CNC equipment of aerospace grade aluminum.

**RZRPROXP** | Pro XP Billet Barrel Adj. Rear Sway Bar Link Kit**Part # 20010SB04201**

- Fits 2020+ Polaris RZR Pro XP all models
- Made from aerospace grade 6061-T6 aluminum
- 3 pieces PTFE lined Left/Right hand 5/8" rods ends,
- Machined wrench notch areas
- 303 Stainless Steel rod end spacers
- Made in USA

PATENT PENDING

The Billet Aluminum Adjustable Barrel Sway Bar Link Kit is designed to increase the strength and adjust ability of your sway bar assembly in a heavy duty and stylish package. These sway bar links are manufactured in the USA on state-of-the-art CNC equipment.

**RZRPROXP** | Pro XP Billet Barrel Adj. Sway Bar Link Kit (M12)**Part # 20010SB02201**

- Fits 2020+ Polaris RZR Pro XP all models
- Made from aerospace grade 6061-T6 aluminum
- 3 pieces PTFE lined Left/Right hand 5/8" rods ends,
- Machined wrench notch areas
- 303 Stainless Steel rod end spacers
- Made in USA

PATENT PENDING

The Billet Aluminum Adjustable Barrel Sway Bar Link Kit is designed to increase the strength and adjust ability of your sway bar assembly in a heavy duty and stylish package. These sway bar links are manufactured in the USA on state-of-the-art CNC equipment.

**RZRPROXP** | Pro XP HD Billet Aluminum Tie Rod Kit**Part # 20010TR06201 - AL7075**

- Fits 2020+ Polaris RZR Pro XP 64" models
- Machined from aerospace grade 7 series 7075-T6 aluminum
- 3 pieces PTFE lined Left/Right hand 5/8" chromoly rods ends
- 303 Stainless Steel rod end spacers
- Made in USA

PATENT PENDING

The Tie Rod Kit for the 2020+ PRO XP Platform (64") is designed to strengthen and add reliability to the this potent power plant. Tie rods are much stronger than standard 6061, and lighter in weight. Machined with wrench notch areas for adjust ability.

**RZRPROXP** | Pro XP/ Pro R/Turbo R Door Bags**Part # 20005SG01401 - Front****Part # 20005SG02401 - Rear**

- Fits 2022+ Pro XP/Pro R/Turbo R all models
- Convenient storage at hands reach
- Large pocket storage gloves, phone, goggles, etc.
- Made of high quality vinyl with carbon fiber accent material
- Water resistant zippers to keep items dry
- Seamless installation into factory frame
- Uses factory hardware for installation
- For use with factory door frames only

PATENT PENDING

These Door Bag Sets are designed to perfectly integrate with factory door frames and add storage at your hands reach. This location is convenient and accessible while you are secured into the vehicle. These bag sets feature 2 convenient pouches to keep essential items handy. A foam knee pad to protect your knees and add comfort.





POLARIS

RZR XP 1000

DRT Motorsports equipped XP1000 with our front/rear body armor, and accessory products

RZRXP1000 | XP1000/XP Turbo Front Bumper

Part # RZRXPFB1

- Fit 2014+ XP1000 and 2016+ XP Turbo All Models (Does Not fit Turbo S)
- Steel construction provides real protection for the desert and dunes
- Easy Bolt-on installation
- Powder-coated textured black with bolt-in raw aluminum mesh grills that remove easily for color matching

PATENT PENDING

This Front Bumper is made for high-speed fun in the sand, desert, trails, or rocks. This bumper fits the 2017+ Polaris XP 1000 and XP Turbo all models. The bumper bolts to the frame over the stock plastics. The RZRXPFB1 adds more strength, protection, and rigidity to the front end of your Polaris RZR XP 1000 and XP Turbo so you can use all that power with confidence.



RZRXP1000 | XP1000/XP Turbo Rear Bumper

Part # RZRXPFB1

- Fit 2019+ XP1000 and 2019+ XP Turbo All Models (Does Not fit Turbo S)
- Steel construction provides real protection for the desert and dunes
- Easy Bolt-on installation
- Powder-coated textured black with bolt-in raw aluminum mesh grills that remove easily for color matching

PATENT PENDING

The Rear Bumper is a must for riders who want to protect their RZR from rocks, trees, and any other obstacles. This bumper fits the 2019+ Polaris XP 1000 and XP Turbo, all models. For riders who like rocks, forest, and technical riding, the DRT rear bumper adds much more protection, strength, and rigidity to the rear end of your Polaris RZR XP.



RZRXP1000 | XP1000/XP Turbo Aluminum Grill

Part # RZRXPFG1

- Fits Polaris 2019+ RZR XP 1000, 2019+ XP Turbo, and 2018+ Turbo S
- Powder-coated Sand Texture Black with raw aluminum inserts
- Laser Cut From 6061-T6 Aluminum
- Easy bolt on installation with no drilling required

PATENT PENDING

The Polaris 2019+ RZR XP 1000, 2019+ XP Turbo, and 2018+ Turbo S Aluminum grill is essential for your RZR UTV. The DRT RZR grill is laser cut from aluminum for precise fitment and no-drill install. The DRT RZRXPFG1 better protects the radiator from small rocks and mud while still allowing enough airflow to the radiator for cooling.



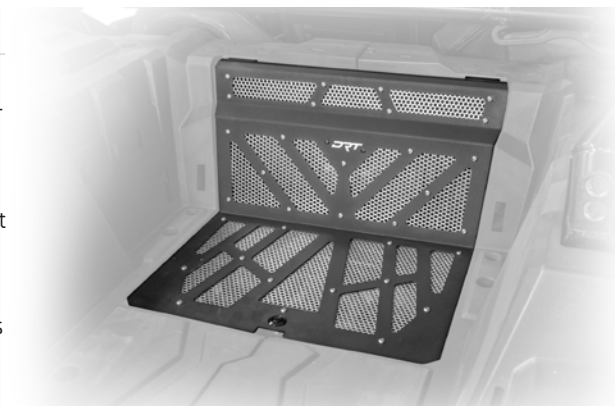
RZRXP1000 | XP1000/XP Turbo Vented Engine Cover

Part # RZRXPVE1

- Fits 2014-2022 Polaris RZR XP 1000, 2016-2021 XP Turbo, and 2019+ Turbo S all models
- Improves engine temperatures & reduces weight
- Made from lightweight aluminum with aluminum mesh vents
- Fully adjustable push-button latch for easy access to the engine
- Powder-coated in sand texture black with raw aluminum mesh vents

PATENT PENDING

The DRT Motorsports RZR XP 1000 and XP Turbo vented engine cover is the perfect solution to keeping your RZR cooler and reducing weight. The DRT RZRXPVE1 vented engine cover is a direct replacement for your factory plastic engine cover. In addition to helping keep your RZR XP 1000 or XP Turbo cooler, the DRT engine cover looks awesome and is very durable.



RZRXP1000 | XP Turbo/Turbo S Air Intake Grill

Part # RZRXP1V1

- Fits 2017+ Polaris RZR XP Turbo/Turbo S all models
- Laser Cut Aluminum Construction from 6061 T6
- Includes 2 grills for intake vents
- Raw Aluminum finish for easy color matching to your vehicle
- Easy installation

The DRT Motorsports Polaris RZR XP 1000 Turbo and Turbo S Intake Vent Grills are an awesome way to upgrade the look of your RZR XP Turbo or Turbo S. The kit comes with 2 grills to install over your Pro XP's factory frog skin mesh filter. The DRT vent grills come in raw aluminum to allow for easy color matching to your vehicle's color scheme.



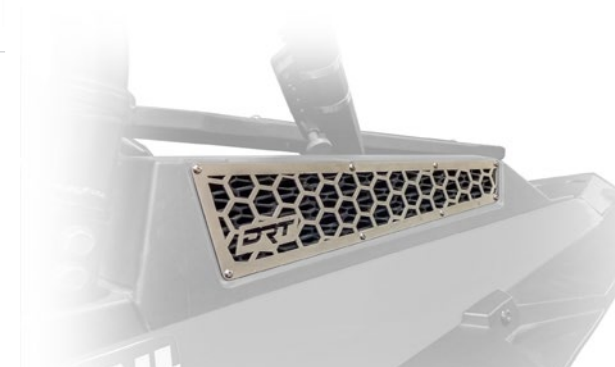
RZRXP1000 | XP1000 Air Intake Grill

Part # RZRXP1V1

- Fits 2017+ Polaris RZR XP 1000 all non-turbo models
- Laser Cut Aluminum Construction from 6061 T6
- Includes 2 grills for intake vents
- Raw Aluminum finish for easy color matching to your vehicle
- Easy installation

PATENT PENDING

The DRT Motorsports Polaris 2014+ RZR XP 1000 Intake Vent Grills are an awesome way to upgrade the look of your RZR XP 1000. The RZRXP1V1 kit comes with 2 grills to install over your factory frog skin mesh filter. The DRT XP 1000 vent grills come in raw aluminum to allow for easy color matching to your vehicle's color scheme.



Vented Engine Cover



Contact Us Today | Info@DRTmotorsports.com | 951-422-1340



RZRXP1000 | XP1000/XP Turbo Adventure Rack/Tire Carrier

Part # RZRXP1000

- Fits 2014+ XP 1000/XP Turbo/Turbo S all models
- Works with almost any aftermarket cage with a 1.75" harness bar
- Fits up to a 35" spare tire with a 3-point tire tie-down
- Multiple tie-down points to fit almost any cargo you bring
- Comes with assist shocks and slam latch system
- Bolt-on installation with no drilling required

PATENT PENDING

The Adventure Rack and Tire Carrier is an essential upgrade for every RZR XP rider. It features a boxed design with tons of tie-down point options, a heavy-duty latch, and lift assist shocks. When used as a tire carrier, the DRT RZR XP Adventure Rack will hold up to a 35" tire securely to keep you on the trails and running hard.



RZRXP1000 | XP1000/XP Turbo Rock Sliders 2-Door

Part # RZRXP1000

- Fits 2014+ XP 1000/XP Turbo/Turbo S 2-Seat models
- Made from 1.25" x .095 high strength steel tubing to handle hard hits
- Powder-coated sand black with raw aluminum mesh inserts
- Grade 10.9 hardware included
- Some drilling is required for installation

PATENT PENDING

The 2014+ Polaris RZR Rock Sliders are designed to protect your RZR from rocks and obstacles while out on the trail. These rock sliders were built with the toughest trails in mind. Rest assured that no important ground clearance is lost with this product to your vehicle. The DRT Motorsports rock sliders are constructed from 1.25" extra thick tubing with removable steel panels and coated in sand black powder coating.



RZRXP1000 | XP1000/XP Turbo High Impact ABS Vented Hood

Part # RZRXP1000

- Fits 2019+ XP 1000/XP Turbo/Turbo S all models
- Constructed from high impact ABS for great durability
- Comes in a black finish that is paint or wrap ready
- Direct factory replacement with easy installation and with no drilling required

PATENT PENDING

The Polaris 2019+ Polaris RZR XP 1000, XP Turbo, and Turbo S high impact ABS hood scoop is essential for XP Pro riders that want their UTV to stand out with aggressive styling and a custom look. The DRT XP hood scoop is constructed from thick high-impact ABS. The scoop is a direct replacement for your factory plastic and takes minutes to install.



RZRXP1000 | XP1000/XP Turbo Aluminum Trunk Enclosure

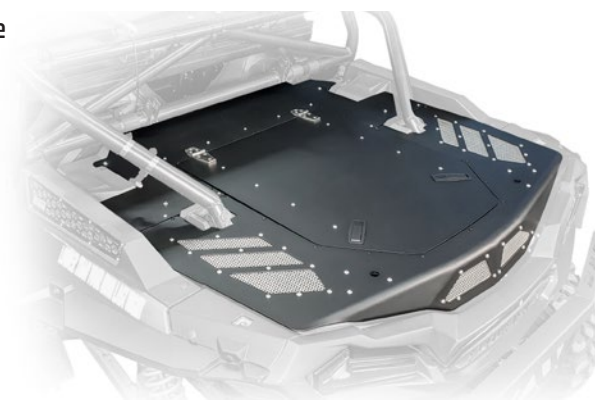
Part # RZRXP1000

- Fits 2014+ XP 1000/XP Turbo/Turbo S all models
- Secures recovery gear, tools, ice chest, or anything you bring without the risk of losing your expensive gear
- Powder Coated Semi-Gloss Black
- Constructed from 5052 .090 aluminum for high strength load-bearing lid
- Easy Bolt-on Installation with no drilling required

PATENT PENDING

Fitment Note: Turbo S models requires cutting holes for additional cage tube.

The Polaris RZR XP 1000, XP Turbo, and Turbo S Aluminum Storage/Trunk Enclosure is a must for riders who want to carry cargo more securely. The DRT Rear Storage Enclosure has a ceiling height of 10.5" and maintains the full width and length of the factory storage box. It was designed with a load-bearing lid for the capability to carry additional cargo on top.



RZRXP1000 | XP1000 Grip Shifter V2.0

Part # RZRXP1000

- Fits all Polaris RZR and Ranger Models
- Made from 6061 T6 Billet Aluminum
- Matte black anodized body with SS laser trim plates
- Easy Installation

PATENT PENDING

The Polaris RZR/Ranger Billet Shifter knob V2.0 is a huge upgrade over the stock plastic shifter control. This Billet Shifter Knob is CNC machined from one piece of aluminum for a look and feel that matches the quality and capabilities of your RZR.



RZRXP1000 | XP1000/XP Turbo/S Billet Aluminum Grab Bar

Part # RZRXP1000

- Fits 2014+ XP 1000/XP Turbo/Turbo S all models
- 6061-T6 CNC Billet Aluminum grips
- Threaded holes for a 1/4"-20 x .625 ball mount for an off-road GPS
- Ergonomic feel with aggressive styling
- Powder coated semi-gloss black
- Adjustable positioning

PATENT PENDING

The Polaris RZR XP 1000, XP Turbo, and Turbo S Billet Aluminum Grab Bar gives your passenger the ability to better secure themselves in the vehicle by adding billet CNC formed handles and grips for those high speed rough rides. The grips have an ergonomic feel and an aggressive design that gives a custom feel to the interior of your SXS.



Adventure Rack/Tire Carrier





RZRXP1000 | XP1000 ABS Full Fender Kit

Part # RZRXPFD1

- Fits 2014+ Polaris RZR XP 1000 / 2016+ XP Turbo 2 and 4 Seat models
- Made from high impact ABS for unmatched durability
- +4" front and rear fenders provides more coverage for passengers from mud and debris
- Comes in a smooth black finish to accept wrap or paint
- Some drilling required for installation

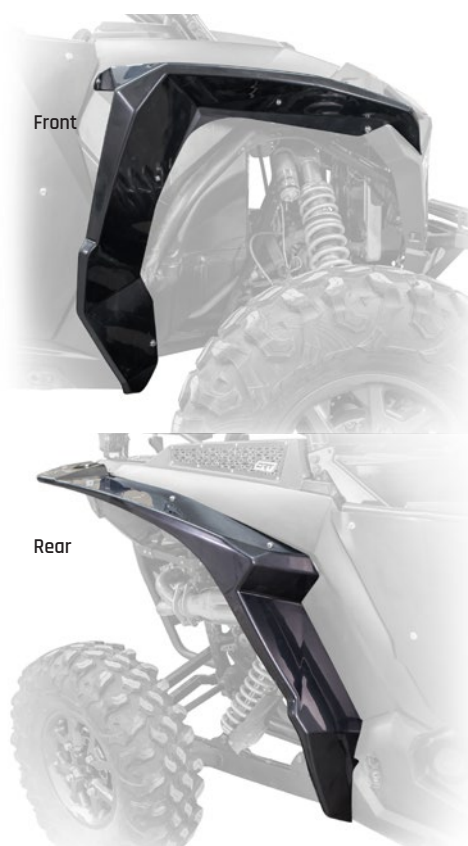
PATENT PENDING

Note: Individual fenders available for replacement



+4" fender provides more coverage for passengers from mud and debris.

The DRT Motorsports Polaris 2014+ Polaris RZR XP 1000 and XP Turbo fender kit is an essential upgrade to your RZR XP. The DRT XP fenders are made from thick high impact ABS to withstand whatever abuse you throw at them. The DRT XP Fenders were designed with the factory UTV lines in mind to create a fender that compliments the vehicle. The DRT RZRXPFD1 replacement fenders add several inches of additional width in the front and rear, beyond the factory fenders, to keep mud and debris out of the car and passengers dry. The fenders are easy to paint or wrap to match your color scheme.



RZRXP1000 | XP Turbo S 3-PC Radius Rod Reinforcement Plate

Part # 2001ORR91200

- Designed for Polaris RZR XP Turbo S/4 applications
- CNC Machined from aerospace grade 6061-T6 aluminum
- Military Specification clear anodized finish
- Steel portion is finished in high quality powder coat
- Includes replacement/upgraded radius rod bolts

This 3pc Modular Radius Rod Plate adds strength, reliability, and service access to your side by side all in a stylish package. The upper and lower brace are made of aerospace quality 6061-T6 billet material. A thick sheet metal plate locks the unit together. These points keep your suspension components locked down while the removable center steel plate allows access for service to your transmission fluid plug.



RZRXP1000 | XP1000 HD Billet Aluminum Tie Rod Kit

Part # 20010TR01201 - M14

- Designed for Polaris RZR XP 1000/4 2015-2018; 2016 Turbo/4 (M14 Steering Rack)

Part # 20010TR02201 - M16

- Polaris RZR XP 1000/4 Polaris '19+ XP1000/4; '17+ XP Turbo/4

Part # 20010TR03201 - M16

- Polaris 18+ RZR XP TURBO S/S 4 (72")

- Machined from aerospace grade 7 series 7075-T6 aluminum
- 3 pieces PTFE lined Left/Right hand 5/8 chromoly rods ends
- 303 Stainless Steel rod end spacers
- Made in the USA

PATENT PENDING

The Tie Rod Kit for the 2020+ XP1000 is designed to strengthen and add reliability to the this potent power plant. Made of Aerospace grade 6061-T6 billet bar stock, this DRT tie rod kit is much stronger than OEM, lighter in weight without sacrificing strength, and will clear all components through the entire range of motion. Even at full droop or compression, this tie rod set will clear all suspension and steering components at any point in the steering range so you can ride with confidence.



RZRXP1000 | Billet Barrel Adj. Sway Bar Link Kit (M10/M12)

Part # 20010SB01201 - M10

Part # 20010SB02201 - M12

- Made from aerospace grade 6061-T6 aluminum
- 3 pieces PTFE lined Left/Right hand 5/8" rods ends,
- Machined wrench notch areas
- 303 Stainless Steel rod end spacers
- Made in USA

PATENT PENDING

The Billet Aluminum Adjustable Barrel Sway Bar Link Kit is designed to increase the strength and adjust ability of your sway bar assembly in a heavy duty and stylish package. These sway bar links are manufactured in the USA on state-of-the-art CNC equipment.



ABS Fenders, Hood Scoop, and Aluminum Front Grill show here.





POLARIS

RANGER XP 1000

DRT Motorsports equipped Ranger with our front and rear winch bumpers products

RNGXP1000 | Ranger XP Front Winch Bumper

The DRT Motorsports Polaris Ranger XP Front Winch Bumper fits the 2019+ Polaris Ranger XP 1000, all models. This DRT front winch bumper replaces the stock OE bumper with a high strength steel winch bumper and skid plate. The bumper includes removable mesh inserts that can be easily color matched to your vehicle. The RNGXPFB1 adds much more strength, protection, and rigidity to the front end of your Polaris Ranger.

Part # RNGXPFB1

- Fits 2019+ Ranger XP 1000 all models
- Steel Construction to provide real protection for your vehicle against hard hits
- Comes with integrated winch plate and bolt on skid plate
- Works with most UTV winches
- Easy Bolt on installation

PATENT PENDING



RNGXP1000 | Ranger XP Rear Winch Bumper

The DRT Motorsports Polaris Ranger XP Rear Winch Bumper fits the 2019+ Polaris Ranger XP 1000, all models. This DRT rear winch bumper add much needed protection and winch capability to the rear of your Ranger. The DRT RNGXPRB1 comes with integrated LED lights for better visibility at night. The bumper includes removable mesh inserts that can be easily color matched to your vehicle. The RNGXPFB1 adds much more strength, protection, and functionality to the rear end of your Polaris Ranger.

Part # RNGXPRB1

- Fits 2019+ Ranger XP 1000 all models (including North Star with rear mounted exhaust)
- Steel Construction to provide real protection for your vehicle against hard hits
- Comes with integrated winch plate and LED lights
- Works with most UTV winches and rated for up to 5000lbs in pulling strength
- Easy Bolt on installation

PATENT PENDING



The DRT Ranger XP bumpers add form, function, and much needed protection.



The rear bumper tilts with the Ranger bed and clears up to a 32" tire.



Removable mesh grills that can be color matched to your Ranger



Contact Us Today | Info@DRTmotorsports.com | 951-422-1340





RZR EFI 170

DRT Motorsports equipped with our front/rear body armor, and accessory products

RNGXP1000 | Ranger XP Hood Rack

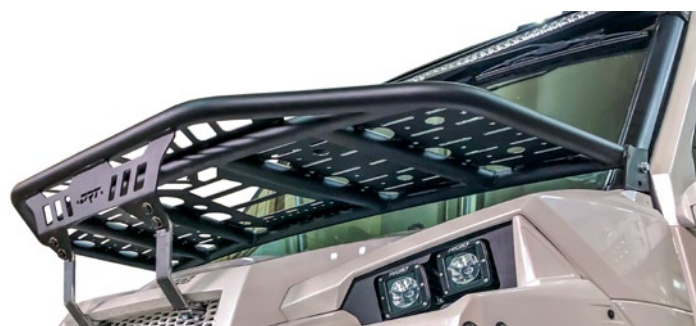
The DRT Motorsports Ranger XP 1000 Hood Rack is the perfect addition for any Ranger that gets used like it was intended. Whether you are ranching, hunting, or working the DRT Ranger Hood Rack provides more usable storage space and endless tie down options. The DRT RNGXP1000 is built with a load rating of 350lbs. The DRT Ranger hood rack comes in the DRT Signature Sand Black Powder Coated finish. The DRT Ranger hood rack is a must for America's work horse.

Part # RNGXP1000

- Fits 2013+ Polaris XP 1000 Rangers all models
- Load rating of 350lbs
- Brackets included to fit 2013-2018 Polaris Ranger and 2019+ Polaris Ranger models
- Multiple tie-down points create endless options for securing cargo on hood rack
- Comes with powder coated sand black finish

Note: Minor cutting required for fitment on 2013-2018 Polaris Ranger

PATENT PENDING



The DRT Ranger XP Hood Rack comes with both 2013-2018 and 2019+ brackets.

The DRT Ranger XP Hood Rack has a load rating of 350lbs.



RZR170 | RZR 170 Rear Wing Spoiler

Part # RZ17RW1

- Fits 2009-2021 Polaris RZR 170
- Lightweight Aluminum Construction
- Aggressive Styling for our Future Racers
- Some minor drilling is required for installation

PATENT PENDING

The rear wing spoiler fits the 2009-2020 Polaris 170. The wing is made of lightweight aluminum construction and has an aggressive styling for our future racers. Some minor drilling is required for installation.



RZR170 | RZR 170 Intake Scoop

Part # RZ17AS1

- Fits 2009-2021 Polaris RZR 170
- Lightweight Aluminum Construction
- Better Air Flow than factory air box
- Works with factory and most aftermarket intake systems
- Easy Bolt-on Installation

PATENT PENDING

The Polaris Air Intake Scoop fits the 2009-2021 Polaris 170. The scoop is made of lightweight aluminum construction and has an aggressive styling for our future racers. Some minor drilling is required for installation.



CAN-AM MAVERICK
X3

SXS
PERFORMANCE PRODUCTS
2023





CAN-AM

MAVERICK X3

DRT Motorsports equipped X3 with our bumper, grill, fenders, and door products

CAX3MAV | X3 Front Bumper and Bulk Head

Part # CAX3FB1

- Fits 2017+ Can-Am Maverick X3 all models
- Full replacement bulkhead and bumper assembly to provide real protection for those hard hits
- Integrated aluminum skid plate
- Pre-drilled holes for light installation
- Minor Drilling required for installation

PATENT PENDING

The Can-Am front bumper/bulkhead is an essential upgrade to your Maverick X3. The bumper adds much-needed protection and strength to the front end and suspension components. That alone would be enough... But, our new bulkhead is made of much thicker steel than OEM, adding strength, support, and stability to the front suspension. This results in a stiffer, more controlled feel when on the trail.



CAX3MAV | X3 A-Arm Reinforcement Gusset Kit

Part # CAX3GK1

- Fits 2017+ Can-Am Maverick X3 all models, except RC
- Reinforces all A-arm mounting points to strengthen your front end
- Changes all A-arm mounting points from single shear to double shear to make your front end nearly 2X stronger
- Works with CAX3FB1 DRT X3 front bumper

This front-end A-arm reinforcement gusset kit is an essential upgrade to your X3. This DRT kit makes all of the X3 upper and lower control arm mounting points double shear. This results in huge strength gains, durability, and a tighter feel in the front suspension. If you plan on using your X3 like it was intended, this kit is a must!



CAX3MAV | X3 Aluminum Front Grill

Part # CAX3FG1

- Fits 2017+ Can-Am Maverick X3 all models
- Powder coated black
- Laser Cut From 6061-T6 Aluminum
- Easy bolt on installation over the OEM grill
- 3 piece set/minor drilling is required

The Can-Am aluminum front grill is an essential upgrade to your Maverick X3. The grill adds strength, protection, and rigidity to the stock grill and radiator of your Can-Am X3. The grill keeps out all sorts of damaging objects from reaching your radiator while still allowing unrestricted airflow when on the trail. The DRT grill also adds a clean yet aggressive finished look to your Can-Am.



CAX3WD1 | X3 Wind Diffuser

Part # CAX3WD1

- Fits 2017+ Can-Am Maverick X3 all models
- Mounts to lower A pillar to keep the wind and dust away from riders
- Installation requires drilling cage
- Raw aluminum mesh panels remove easily to color match to your vehicle

The X3 Wind Diffuser is made for riders who want protection from the wind and dust but don't want the hassle of a full windshield. The DRT X3 wind diffuser is made from aluminum with removable mesh inserts. The CAX3WD1 provides the right amount of directional airflow to get the wind out of your face at high speeds and divert dust away from the riders.



CAX3MAV | X3 Dual Shear Radius Rod Plate

Part # CAX3RP1

- Fits 2017+ Can-Am Maverick X3 all models
- Strengthens rear end of Can-Am by making all radius rod frame mounting locations dual shear
- Tighter tolerances than factory radius rod plate
- Extra thick and gusseted tow / tie down point
- Easy bolt on installation with no drilling required

PATENT PENDING

This X3 Dual Shear Radius Rod Plate is made with tighter tolerances and thicker material than your factory radius rod plate. Most importantly, the DRT Radius rod plate converts all the frame side radius rod mounting hardware to double shear. This results in huge strength gains for the rear suspension and prevents breaks in a common failure point.



CAX3MAV | X3 Hitch Mount

Part # CAX3HM1

- Fits 2017+ Can-Am Maverick X3 all models
- Constructed from 3/16 Steel Plate
- Powder coated Black
- Reinforces radius rod plate reducing stress on radius rod bolts and prevents failures
- Easy Bolt on Installation

This rear hitch-mount is an essential upgrade to your X3. This hitch-mount is made of much thicker steel than OEM. This adds strength, support, and stability to the rear suspension resulting in a stiffer and more controlled feel when on the trail. The main feature is the ability to add a ball hitch for towing light to medium-weight equipment.



CAX3MAV | X3 Door Kit ABS

Part # CAX3DR1 - Front

Part # CAX3DR2 - Rear

- Fits 2017+ Can-Am Maverick X3 all models
- Door Skins made from high impact ABS for long term durability
- Steel door frames provide rigidity and long term durability
- Reuses factory door hardware for trouble free fitment
- Comes in smooth black finish

Note: X3 2 Door: If pairing DRT doors and fenders, minor trimming is required for fitment

PATENT PENDING

The front and rear ABS door kits are an essential upgrade to your X3. These doors fit the 2017+ Can-Am X3 2 and 4-door models. These doors are made from high-impact ABS for long-term durability. They provide additional coverage to keep passengers protected, dry and clean. Some drilling and cutting is required for installation. They come in smooth black finish and add styling to really make your Can-Am look aggressive.



CAX3MAV | X3 ABS Fenders

Part # CAX3FD1

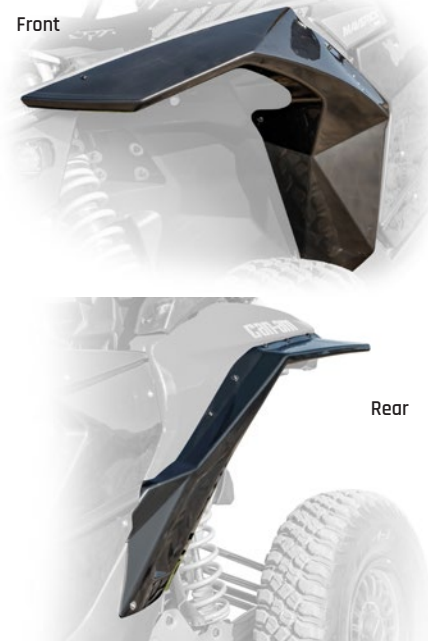
- Fits 2017+ Can-Am Maverick X3 all models
- Fenders are made from high impact ABS for long term durability
- Provides additional coverage to keep passengers dry and clean
- Some drilling required for installation
- Comes in smooth black finish

Note: X3 2 door: OEM lower doors will require minor trimming to work with rear fenders

PATENT PENDING

The X3 fender kit is an essential upgrade to your X3. These X3 fenders are made from thick high-impact ABS to withstand whatever abuse you throw at them. The DRT replacement fenders add several inches of additional width in the front and rear, beyond the factory fenders, to keep mud and debris out of the car and passengers dry. The fenders are easy to paint or wrap to match your color scheme.

Note: Individual fenders available for replacement



Can-Am Maverick X3 with DRT bumpers, grill, fenders, and doors.

CAX3MAV | X3 Billet Radius Rod Plate

Part # CAX3RP2 - RAW

Part # CAX3RP3 - BLACK/MILLED

- Fits 2017+ Can-Am Maverick X3 all models
- CNC Machined from one giant piece of 6061-T6 aluminum to strengthen a common failure point
- Direct bolt-on replacement for easy installation
- Machined to tighter tolerances than the factory plate
- Available in Raw Aluminum and black finish

The X3 Billet Radius Rod Plate is a great upgrade for X3 riders looking for function and style. This Billet Radius rod plate is CNC machined from one giant piece of 6061-T6 aluminum. The DRT X3 Billet Radius Rod Plate is made with tighter tolerances and thicker material than your factory radius rod plate to reduce stress on the radius rod bolts. This results in strength gains and prevents breaks in a common failure point.



CAX3MAV | X3 Billet Shock Tower Brace

Part # CAX3ST1 - RAW

Part # CAX3ST2 - BLACK

- Fits 2017+ Can-Am Maverick X3 all models
- CNC Machined from one giant piece of 6061-T6 aluminum to strengthen a common failure point
- Direct bolt-on replacement for easy installation
- Available in Raw Aluminum and black finish

The X3 Billet Shock Tower Brace is a great upgrade for X3 riders looking for function and style. The DRT X3 Billet Shock Tower Brace is CNC machined from one giant piece of 6061-T6 aluminum. The DRT X3 Billet Shock Tower Brace is made with lower tolerances and with thicker material than your factory shock tower brace to provide more strength at this common failure point.



CAX3MAV | X3 Billet Aluminum Door Handle Kit

Part # 30005DR05201

- Fits 2017+ Can-Am Maverick X3 all models
- Aerospace grade 6061-T6 billet aluminum
- Stainless steel hardware
- Easy install into factory holes, no drilling or modification required
- 2 Door handles per kit
(MAX models will require a second set for rear doors)

PATENT PENDING

The X3 Billet Aluminum Door Handle Kit adds the functionality of a door handle, a positive feel, and much easier access in and out of your ride. This kit replaces the nylon strap material that the X3 comes with that is known for wear and breakage. These are lightweight not to add unnecessary weight to your vehicle.



CAX3MAV | X3 Shift Knob, Gate, and Grab Handle

Part # CAX3SK1

- Fits 2017+ Can-Am Maverick X3 all models
- 3-piece shift knob, grab handle and shift gate set
- Upgrades and customizes your X3 interior
- Billet cut 6061-T6 aluminum construction
- Powder coated black with milled accents

The X3 shift knob set is a great way to add a custom look and feel to the interior of your X3. The billet shift knob set comes complete with a 6061-T6 billet shift knob, passenger grab handle, and shift gate. The high-grade 6061-T6 CNC billet cut parts replace the factory plastic parts to give a high-end and premium look and feel to your car.





CAX3MAV | X3 Billet Aluminum Hex Bar Radius Rod Kit 72"

Part # 30010RR61201

- Fits 2017+ Can-Am Maverick X3 72" models
- Made from aerospace grade 6061-T6 aluminum
- Hex bar is used for wrench to lock rod ends
- 3 pieces PTFE lined Left/Right hand 5/8" rods ends
- Machined pockets on center toe link rod
- 303 Stainless Steel rod end spacers

PATENT PENDING

The Billet Aluminum Hex Bar Radius Rod Kit Can Am X3 72" is designed to increase the strength and adjust ability of your radius rods in a stylish package. These rods are manufactured in the USA on state-of-the-art CNC equipment of aerospace grade aluminum.



CAX3MAV | X3 2 Door Rock Sliders

Part # CAX3RS1

- Fits 2017+ Can-Am Maverick X3 2-door models
- Made from 1.25" x .095 high strength steel tubing to handle hard hits and abuse
- Powder coated sand black with raw aluminum mesh inserts
- Grade 10.9 hardware included
- Some drilling required for installation

PATENT PENDING

The X3 2 door Rock Sliders were built with the abuses of racing in mind. The DRT X3 sliders are designed to protect your X3 from rocks and obstacles while out on the trail. They are mounted directly to the frame at 3 points to ensure maximum strength for those hard hits. These rock sliders are constructed from 1.25" extra thick tubing with removable steel panels.



CAX3MAV | X3 Billet Aluminum Barrel Radius Rod Kit 72"

Part # 30010RR51201

- Fits 2017+ Can-Am Maverick X3 72" models
- Made from aerospace grade 6061-T6 aluminum
- Hex bar is used for wrench to lock rod ends
- 3 pieces PTFE lined Left/Right hand 5/8" rods ends
- Machined pockets on center toe link rod
- 303 Stainless Steel rod end spacers

PATENT PENDING

The Billet Aluminum Barrel Radius Rod Kit Can Am X3 72" is designed to increase the strength and adjust ability of your radius rods in a stylish package. These rods are manufactured in the USA on state-of-the-art CNC equipment of aerospace grade aluminum.



CAX3MAV | X3 2 Door Tree Kickers

Part # CAX3RS2

- Fits 2017+ Can-Am Maverick X3 2-door models
- Made from 1.25" x .095 high strength steel tubing to handle hard hits and abuse
- Powder coated sand black with raw aluminum mesh inserts
- Grade 10.9 hardware included
- Some drilling required for installation

PATENT PENDING

The X3 2 door Tree Kickers were built with the abuses of high speed tree rides in mind. The DRT X3 sliders are designed to protect and deflect your X3 from trees and obstacles while out on the trail and keep you moving forward. They are mounted directly to the frame at 4 points to ensure maximum strength for those hard hits. These tree kickers are constructed from 1.25" extra thick tubing with removable steel panels.



CAX3MAV | X3 Billet Aluminum Barrel Adj. Sway Bar Link Kit

Part # 30010SB01201

- Fits 2017+ Can-Am Maverick X3 Rear Application
- Made from aerospace grade 6061-T6 aluminum
- 3 pieces PTFE lined Left/Right hand 5/8" rods ends
- Machined wrench notch areas for adjust ability
- 303 Stainless Steel rod end spacers
- Includes attachment bolts
- Made in the U.S.A.

PATENT PENDING

The Sway Bar Link Kit is designed to increase the strength and adjust ability of your sway bar assembly in a heavy duty and stylish package. The sway bar links also increase rigidity and reduce lateral suspension flex that is transferred from the trailing arms to the sway bar. These sway bar links are manufactured in the USA on state-of-the-art CNC equipment of aerospace-grade aluminum.



CAX3MAV | X3 Belt Replacement Tool Kit

Part # 30005TK01201

- Fits 2017+ Can-Am Maverick X3 all models
- 2-piece design, Billet Aluminum Construction
- Anodized finish on tool and roller plate
- The kit is stored in a custom DRT Branded storage pouch
- Store it in the glove box, tool box, or wherever necessary to have this tool handy
- The tool operation is simple, quick, and includes printed instructions

This Aluminum Belt Changing tool kit is designed to make the task of changing your belt as quickly and easily as possible to keep you on the trail. This Belt Changing Tool kit requires no modifications and works with stock OEM clutches and most aftermarket clutches. With the right tool you will not damage destroy the clutches which are an expensive component of your vehicle.





KAWASAKI

TERYX KRX 1000

DRT Motorsports equipped KRX with our front and rear bumper products

TERYXKRX | KRX Front Bumper

Part # 50005FB01101

- Fits all Kawasaki KRX Models
- Removable / Replaceable skid plate
- Zinc plated hardware
- Does not interfere with factory winch
- Light mounting tab/ universal holes
- Easy Installation

PATENT PENDING

The KRX/4 1000 Front Bumper takes a unique approach to the fabrication and materials used to create such a rugged and stylish component. It has the rigidity of steel tube, and complimented it with high strength formed steel sheet plate assembly to provide a look that integrates into the OEM styling of the vehicle.



TERYXKRX | KRX Rear Bumper

Part # 50005RB01101

- Fits all Kawasaki KRX Models
- Removable / Replaceable skid plate
- Zinc plated hardware
- Does not interfere with Suspension components
- Easy Installation

PATENT PENDING

The KRX/4 1000 Rear Bumper takes a unique approach to the fabrication and materials used to create such a rugged and stylish component. It has the rigidity of steel tube, and complimented it with high strength formed steel sheet plate assembly to provide a look that integrates into the OEM styling of the vehicle.



Simple, tough, stylish, yet very practical upgrade for your KRX - DRT Aluminum Grill.



DRT has products to not only make your KRX tough and usable, but more comfortable as well - D-shaped suede steering wheel.

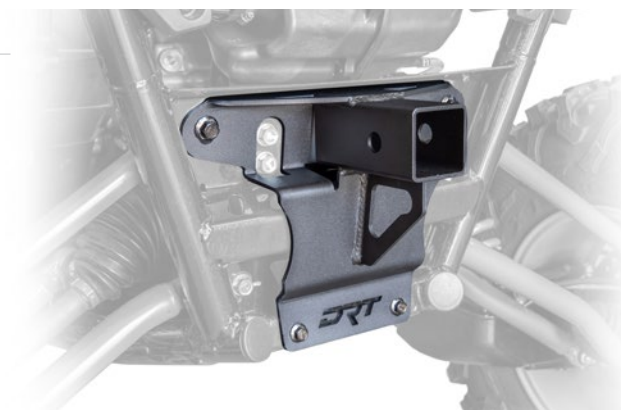
TERYXKRX | KRX 2.0" Hitch Receiver

Part # 50005HM01101

- Fits all Polaris RZR and Ranger Models
- 2.0" Hitch Receiver
- 3/16" Steel Construction
- Includes zinc plated attachment hardware.
- Laser Cut - CNC Formed
- Gusseted and welded
- Easy Installation

PATENT PENDING

The KRX/4 1000 2.0" Hitch Receiver provides a perfect attachment point for Pulling, Towing, or making use of your favorite 2.0" hitch attachments and accessories. This hitch receiver is powder coated for a strong and durable finished to be used and protected in the toughest environment you can throw at it.



TERYXKRX | KRX Aluminum Front Grill

Part # 50005F601101

- Fits all Kawasaki KRX Models
- Laser Cut From 6061-T6 Aluminum
- Powder coated semi-gloss black
- Paintable grill inserts
- Easy Installation

PATENT PENDING

The Aluminum Grill is an essential item to complete your UTV. This grill is laser cut from aluminum for a precise fitment and no drill install. It better protects the radiator from small rocks and mud while still allowing enough air flow to the radiator for cooling. Overall better protection and aggressive styling for the KRX.



TERYXKRX | KRX Aluminum Trunk Enclosure

Part # 50005TE01101

- Fits all Kawasaki KRX Models
- Made from .090 aluminum and reinforced steel internal support frame
- Two access points to cargo for easy access with and without a tire carrier
- High quality aircraft grade compression latches
- Easy Installation

PATENT PENDING

This Aluminum Storage/Trunk Enclosure is a must to carry cargo more securely and still retain the ability to carry up to a 35" spare tire. The DRT rear storage enclosure maintains the full width and length of the factory cargo/storage compartment. It has a load bearing lid the spare tire or additional cargo on top of the enclosure lid.



The DRT KRX Rear Bumper is not only aggressive in styling, it's built for those hard hits.





TERYXKRX | KRX Air Intake Vent Cover Set

Part # 50005IV01101

- Fits all Kawasaki KRX Models
- Laser Cut Aluminum Construction from 6061 T6
- Includes 2 grills for intake vents
- Raw Aluminum finish for easy color matching to your vehicle
- Easy installation

PATENT PENDING

The Kawasaki KRX Intake Vent Grills are an awesome way to upgrade the look of your KRX. The kit comes with 2 grills to install over your factory frog skin mesh filter. These vent grills come in raw aluminum to allow for easy color matching to your vehicle's color scheme. The Grills are easily installed with some minor drilling required.



TERYXKRX | KRX Hood Scoop

Part # 50005HS01001

- Fits all Kawasaki KRX Models
- Constructed from high impact ABS for great durability
- Comes in a black finish that is paint or wrap ready
- Direct factory replacement with easy installation and with minor drilling required

PATENT PENDING

The Kawasaki KRX high impact ABS hood scoop is essential for KRX riders that want their UTV to stand out with aggressive styling and a custom look. The DRT KRX hood scoop is constructed from thick high-impact ABS. The scoop is a direct replacement for your factory plastic and takes minutes to install with some minor drilling required.



TERYXKRX | KRX Grip Shifter V2.0

Part # 50005SK01201

- Fits all Kawasaki KRX Models
- Made from 6061 T6 Billet Aluminum
- Matte black anodized body with SS laser trim plates
- Easy Installation

PATENT PENDING

The Kawasaki KRX Billet Shifter knob V2.0 is a huge upgrade over the stock plastic shifter control. This Billet Shifter Knob is CNC machined from one piece of aluminum for a look and feel that matches the quality and capabilities of your KRX.



TERYXKRX | KRX HD Billet Aluminum Tie Rod Kit

Part # 50010TR01201 - M16

- Made from aerospace grade 6061 T6 Billet Aluminum
- 3 pieces PTFE lined Left/Right hand 5/8 chromoly rods ends
- Machined wrench notch areas for adjust ability
- 303 Stainless Steel rod end spacers
- Made in USA

PATENT PENDING

The Tie Rod Kit is designed to strengthen and add reliability to this great vehicle platform. This kit is much stronger than OEM, lighter in weight without sacrificing strength, and will clear all components through the entire range of motion.



New to this year is our DRT Motorsports product line for the Kawasaki Teryx KRX 1000. Products now available are the HD Front Bumper, Rear Bumper, Aluminum Front Grill, 2" Hitch Receiver, Aluminum Trunk Enclosure, Hood Scoop, Side Air Intake Vents, Grip Shifter, Billet Aluminum Tie Rods, and DRT accessories with much more coming soon.

KRX Aluminum Front Grill and HD Front Bumper





UNIVERSAL | 330mm D-Shape Steering Wheel

Part # 10005SW03301 - LEATHER
Part # 10005SW04301 - SUEDE

- Genuine Leather/Suede material
- Flat bottom D-Shape for extra leg clearance
- Billet Aluminum face plate assembly with stainless steel contrast plate
- Contoured grips for hand comfort and control.
- 330mm (13 inch) Diameter

The DRT Motorsports 330mm D-Shape Steering Wheel both in Leather and Suede provides a stylish package that provides optimum control and comfort to the driving experience. The added comfort can provide confidence to help you improve your driving. Requires the use of DRT Motorsports Steering Wheel Billet Hub Adapter or equivalent for installation on your specific vehicle.



UNIVERSAL | 330mm Round Steering Wheel

Part # 10005SW01301 - LEATHER
Part # 10005SW02301 - SUEDE

- Genuine Leather/Suede material
- Billet Aluminum face plate assembly with stainless steel contrast plate
- Contoured grips for hand comfort and control.
- 330mm (13 inch) Diameter
- Compatible with paddle / sport shift vehicles

The DRT Motorsports 330mm Round Steering Wheel both in Leather and Suede provides a stylish package that provides optimum control and comfort to the driving experience. The added comfort can provide confidence to help you improve your driving. Requires the use of DRT Motorsports Steering Wheel Billet Hub Adapter or equivalent for installation on your specific vehicle.



UNIVERSAL | Steering Wheel Billet Hub Adapter

Part # 10005SG21401
Can-Am/Polaris/Arctic Cat/Textron
Part # 10005SW12201 - Yamaha/Honda
Part # 10005SW13201 - Kawasaki

- Waterproof PVC Material
- Multiple sizes available 5/10/20/30 L
- Roll down closure
- Shoulder strap/s included
- Rugged construction
- Waterproof/Snow Proof/Sand Proof/Dirt Proof

The DRT Motorsports steering wheel hub adapters are designed for use with DRT Motorsports Steering wheel line of products or can be used with a standard 5/6 bolt pattern of wheels. They can also be used in conjunction with the DRT Motorsports bolt on quick release and others that use a standard 5/6 bolt pattern. CNC machined from a solid block of 6061 T6 aircraft grade billet aluminum.



UNIVERSAL | UTV 2.0" Spare Axle Cage Mount

Part # UTV20AX1

- Fits all UTVs with 2.0" cage tubing
- Designed to work with OEM and all aftermarket axles
- Secure mounting point for a spare axle regardless of how tough the terrain gets
- Easy bolt on installation

PATENT PENDING

The UTV 2.0" axle holder is a must for riders who carry a spare axle while riding or racing. The DRT UTV20AX1 is designed to securely mount a spare axle to the roll cage that won't rotate, slide, or move regardless of how rough things get. The DRT Axle holder fits all roll cages with 2.0" tubing and fits almost any spare axle. Don't get left behind. Whether you are racing or riding with the crew, DRT has you covered.



UNIVERSAL | Fender/Rock Washer & Hardware Dress Up Kit

Part # UTVRW1-A- RAW
Part # UTVRW1-G- GREY
Part # UTVRW1-B- BLACK
Part # UTVRW1-R- RED

- Set of 28 aluminum billet 6061-T6 fenders/rock washers and fasteners
- Replaces your OEM hardware with custom race-inspired hardware
- Great detail product to customize your vehicle and stand out.

The Billet Fender / Rock Washer dress-up kits are the perfect upgrade for riders who like the details. The Billet washer kits come with 28 pieces of fender/rock washers and stainless hardware. Available in raw aluminum, black, grey, and red to match your color scheme.

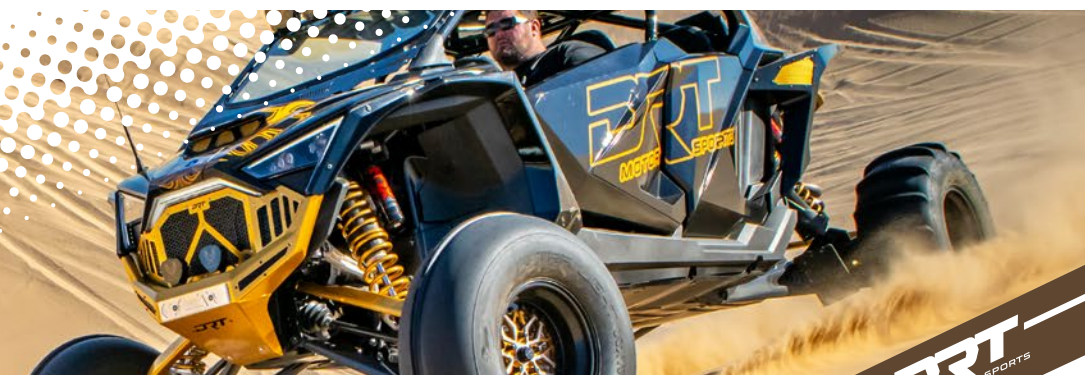


UNIVERSAL | Ratcheting (3 point) Y-Strap

Part # 10005TC01401

- Universal application
- High strength, low stretch, 1.50" synthetic webbing
- Zinc coated steel components
- Plasti-coated steel hooks protect surfaces and contact points
- Made in the USA

The DRT Motorsports Ratcheting (3 point) Y-Strap is Made in the USA and constructed of 1.50" high strength, low stretch, synthetic webbing. All steel components are zinc plated for a long life and use in the harshest conditions. Adjustable for a large range of tires. Plasti-coated steel hooks protect surfaces and contact points from damaging finishes.



UNIVERSAL | Grip Shifter V2.0

- Part # 20005SK02201 - Polaris
- Part # 40005SK01201 - Honda
- Part # 50005SK01201 - Kawasaki

- Made from 6061 T6 Billet Aluminum
- Matte black anodized body with SS laser trim plates
- Easy Installation

PATENT PENDING

The Billet Shifter knob V2.0 is a huge upgrade over the stock plastic shifter control. This Billet Shifter Knob is CNC machined from one piece of aluminum for a look and feel that matches the quality and capabilities of your vehicle.



UNIVERSAL | Waterproof Dry Bag- 5/30 Liter

- Part # 10005SW11201 - 5 LITER/1 STRAP
- Part # 10005SG24401 - 30 LITER/2 STRAP

- Waterproof PVC Material
- Multiple sizes available 5/10/20/30 L
- Roll down closure
- Shoulder strap/s included
- Rugged construction
- Waterproof/Snow Proof/Sand Proof/Dirt Proof

DRT Motorsports dry bags come in 2 sizes in the collection. It can serve as a dry bag or as a waterproof backpack. With 5/30 liters of space, it can easily fit your overnight items or gear with room to spare. It has single/dual removable shoulder straps that can be used to carry your stuff on your back and leaving your hands free.



UNIVERSAL | Spare Tire Storage Bag

Part # UTV20AX1

- Adds valuable storage space
- Water-resistant, dual zipper pulls
- Rigged carbon fiber top
- Crossed webbed bottom for strength
- Strong and reinforced handle for transportation

The Spare Tire Storage Bag is designed to be used in the unused space of the vehicles spare tire! The bag measures 13.5" x 7" and designed for universal application, and a great accessory to the DRT Motorsports TC series tire carriers. The bag is placed inside the rim and held in place with the "Y" strap. This bag features a carbon fiber vinyl top with a durable nylon body to withstand the harsh elements of road adventures.



APPAREL | DRT Motorsports Snap-back hat

Available Sizes: UNISEX ONE SIZE

- Richardson 6 Panel Acrylic Wool Blend
- Hi Profile With Pro-crown Shape And Buckram Fused Front Panels
- 1 3/8" Pro-sweatband With Twill Face
- Flat Visor/Adjustable Plastic Snapback Closure
- One Size Fits Most

Our Flat Bill Plastic Snap Closure Back hat comes in grey/black with the DRT embroidered patch logo. This hat is a 6-panel acrylic wool blend material with hi-profile, pro-crown shape, and Buckram Fused front panels. It has a 1 3/8" pro-sweatband with a twill face and moisture-wicking fabric.



APPAREL | DRT Motorsports 2022 T-Shirt

Available Sizes: S, M, L, XL, 2XL, 3XL
Available Colors: Black/Silver

- 4.5 oz., 100% ring-spun cotton
- Reactive-dyed for longer-lasting color
- Pre-washed/Tubular construction
- Ribbed crew neck
- Taped neck and shoulders for durability
- Double need stitching
- Tear Anywhere label

This is a crowd favorite and our 2nd design in the DRT T-shirt line. A classic 100% cotton tee, pre-washed to minimize shrinkage. This is a must-have in every wardrobe if you are a DRT enthusiast. This tee is perfect for every occasion, extremely comfortable, breathable, and built to last.



APPAREL | DRT Motorsports 2022 Retro T-Shirt

Available Sizes: S, M, L, XL, 2XL, 3XL

- 4.5 oz., 100% ring-spun cotton
- Reactive-dyed for longer-lasting color
- Pre-washed/Tubular construction
- Ribbed crew neck
- Taped neck and shoulders for durability
- Double need stitching
- Tear Anywhere label

This is a crowd favorite and our 3rd design in the DRT T-shirt line. A classic 100% cotton tee, pre-washed to minimize shrinkage. This is a must-have in every wardrobe if you are a DRT enthusiast. This tee is perfect for every occasion, extremely comfortable, breathable, and built to last.



APPAREL | DRT Motorsports 2022 Retro Womens Tank Top

Available Sizes: S, M, L, XL

- 50/25/25 Polyester/Cotton/Rayon blend
- Reactive-dyed for longer-lasting color
- Pre-washed to minimize shrinkage
- Stretchable and very comfortable
- Lightweight material

This is a crowd favorite and our 3rd design in the DRT T-shirt line. A classic style made of 50/25/25 Polyester/Cotton/Rayon blend. This is a must-have in every wardrobe if you are a DRT enthusiast. This tee is perfect for every occasion, extremely comfortable, breathable, and built to last.



APPAREL | DRT Motorsports 2022 Retro Hoodie

Available Sizes: S, M, L, XL, 2XL

- 80/20 Cotton/Poly blend
- Reactive-dyed for longer-lasting color
- Pre-washed
- Thick comfortable material
- Draw string hood
- Zipper front
- Large Front pockets

This is a crowd favorite and our 1st design in the DRT Hoodie line. A classic 80/20 cotton/poly blend hoodie, zipper front with pockets, and pre-washed to minimize shrinkage. This is a must-have in every wardrobe if you are a DRT enthusiast. This Hoodie is perfect for every occasion, extremely comfortable, breathable, and built to last.





WHO WE ARE

MISSION & PROMISE

At DRT Motorsports, our goal is to deliver value to the off-road and side by side community by creating unique products that are race capable, truly functional, and that compliment a vehicle with aggressive design. Combining these core attributes with easy installation creates a product line that adds needed, safety and style to your UTV.

What does this mean? DRT means—some of the best looking and performing products that are built to last. DRT means—a brand that stands behind its products and the customers that trust us with their business. The DRT Motorsports brand means—quality, long-lasting rugged durability, friendly installation, and great customer service/support. This is what DRT Motorsports means when we build our products.



DRT Motorsports designs, engineers, and tests all of its products in the USA. We have one of the best lead product designers and teams in the off-road market. Our product designer is truly an artist with all things metal. From full aluminum bodies to UTV accessories, everything the DRT product design team does is bad ass! We have big aspirations for the DRT brand so our expectations are high.

DRT Motorsports has provided us the opportunity to get involved in the off-road community and we are humbled by the people we have had the opportunity to meet and serve. Our biggest ambition is to contribute to a community and industry that is bigger than ourselves or any one company. We strive every day to push the industry forward and ensure that the legacy of the off-road community is alive and well for future generations.



DRT Motorsports is a strong sponsor for the American Sand Association. DRT believes in the ASA mission and the work they do. We are proud to support their work and mission to the industry on the trails and having fun.

We hope to developing future relationships with other organizations that are truly making a difference in the off-road community and will be proud to announce them when we do.

The reception of the DRT product line by the off-road community has been absolutely awesome. We are truly thankful for the support we have received and will continue to do our best to exceed their expectations by delivering value, trail tested, race capable, and fully functional products!



Contact us for more information on products or services

www.drmmotorsports.com | Info@drmmotorsports.com
951-422-1340 | Riverside, CA

