



***Polaris RZR XP 1000 Turbo
Installation Instructions***

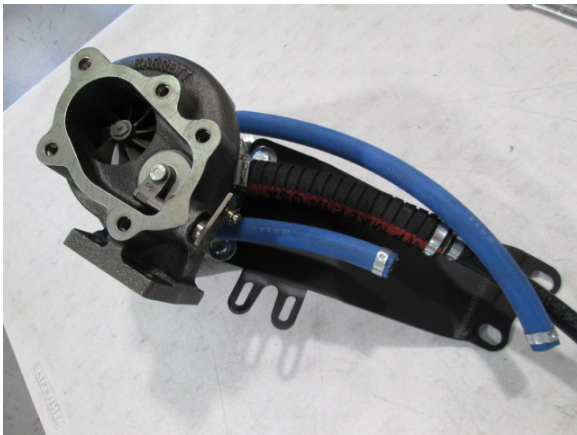
BoonDocker RZR 1000 Turbo



1. Remove muffler, air filter to air box tube, air box, and header.



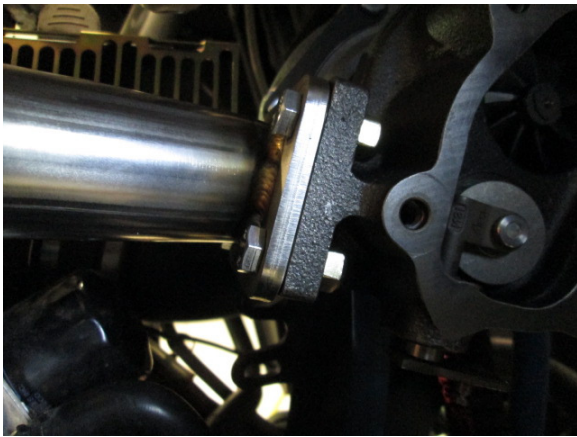
2. Clean header flange at head and install turbo header and new header gasket.



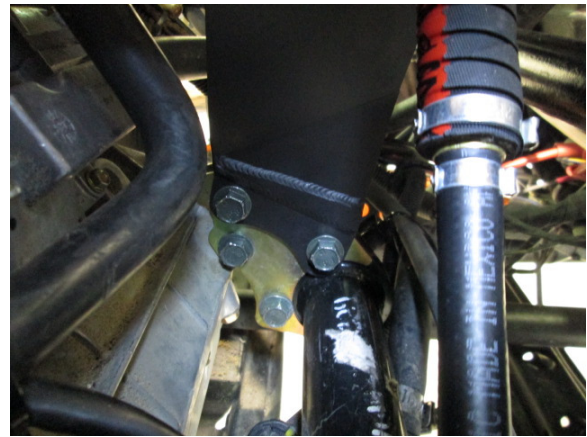
3. Install turbo support bracket to turbo. Leave bolts loose, so bracket can be adjusted once installed.



4. Remove these 2 bolts from the driver side front engine mount.



5. Install turbo assembly and steel gasket to header using 4 8mm x 25mm bolts and lock nuts. Leave bolts loose so adjustments can be made when turbo bracket is tightened.

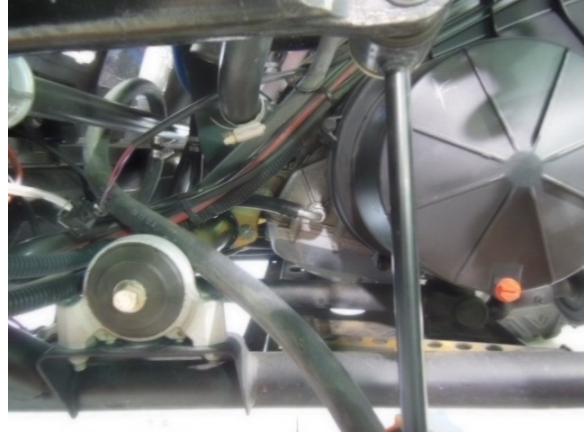


6. Install the 2 stock engine mount bolts through the turbo bracket. Tighten engine mount bolts turbo to header bolts and turbo bracket to turbo bolts simultaneously.

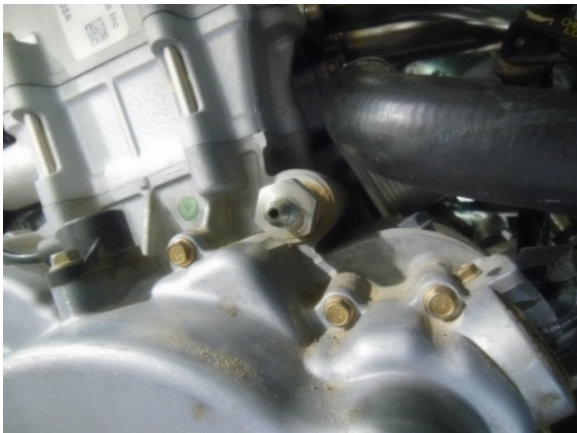
BoonDocker RZR 1000 Turbo



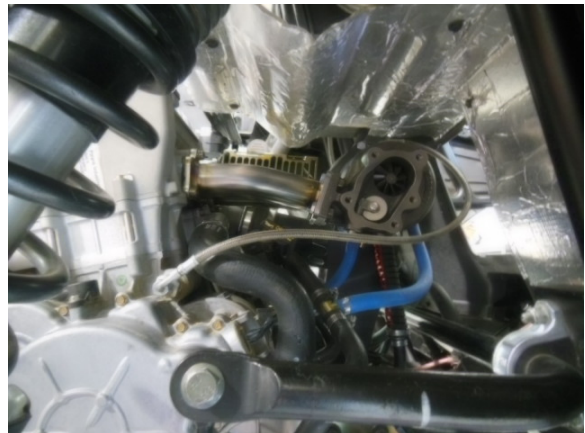
7. Cut engine oil cooler coolant hoses at mid point and T turbo coolant hose into each hose.



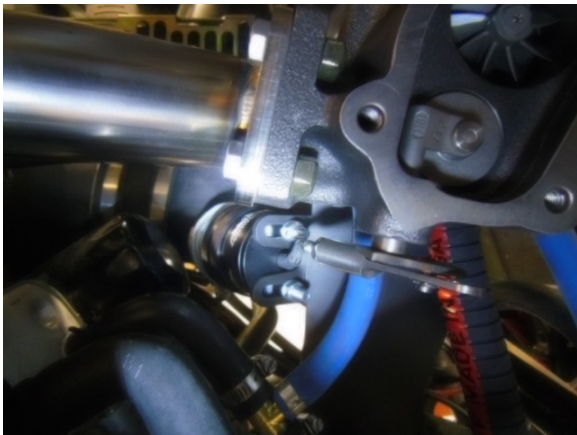
8. Remove plug from engine case located just in front of the clutch cover. Install AN fitting, route turbo drain hose to fitting and attach.



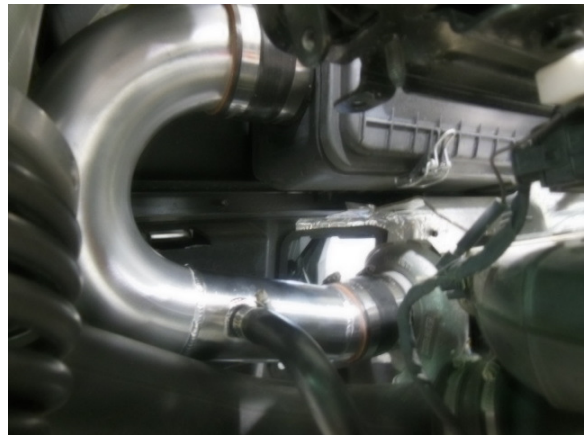
9. Remove plug and install AN fitting located above magneto cover on passenger side of engine.



10. Install oil feed hose. Be sure to route feed hose away from header.



11. Install waste gate actuator and adjust rod tension so that the waste gate door is held barely closed.



12. Install air intake tube from stock air box to turbo. Attach stock crank case vent hose to air intake tube.

BoonDocker RZR 1000 Turbo



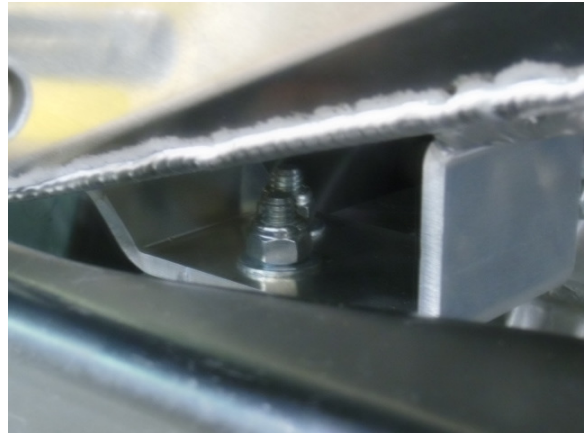
13. Install silicone hose to throttle bodies and secure with hose clamps.



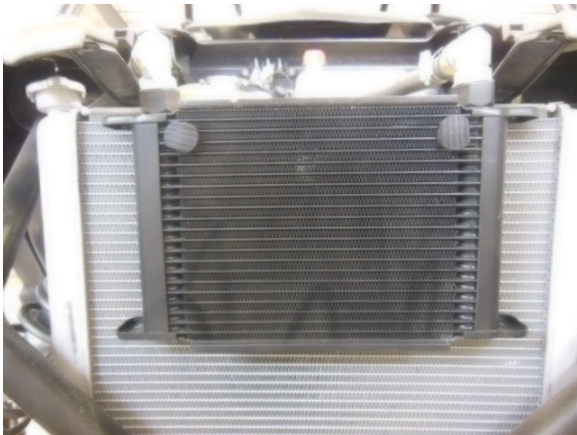
14. Install air box transmission mount bracket using stock bolts and steel spacer from stock air box. Leave bolts loose so air box can be adjusted later.



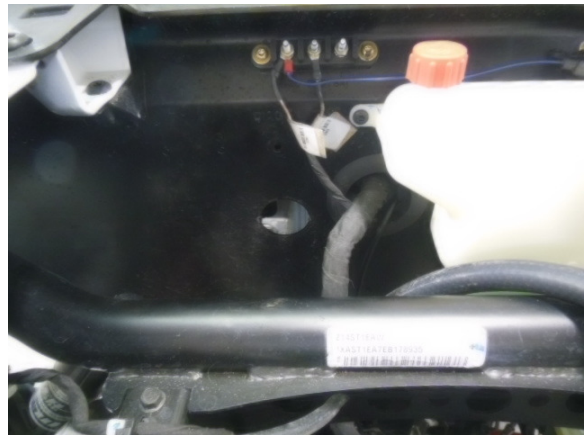
15. Install air box intercooler assembly. Adjust transmission bracket to position air box assembly so that there is clearance on all sides and corners.



16. Fasten air box assembly to transmission bracket using 5/16"x1" bolts washers and lock nuts and tighten transmission bracket bolts.

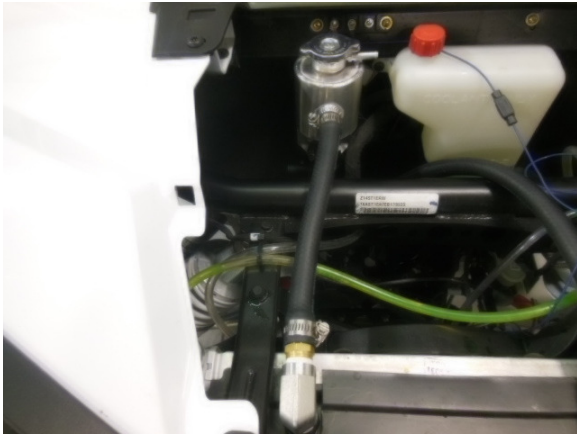


17. Remove grill and install water cooler to stock radiator. Secure firmly using 4 push through zip ties.



18. Remove grommet from fire wall.

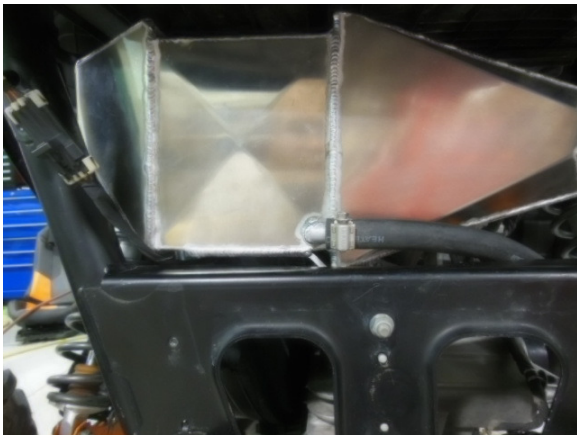
BoonDocker RZR 1000 Turbo



19. Install coolant bottle and pump assembly. And install hose from coolant bottle to water cooler.



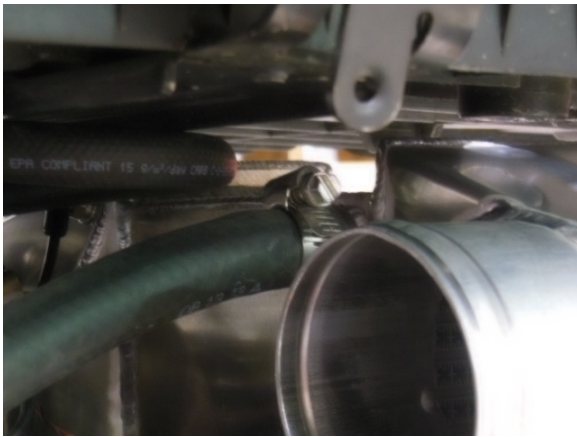
20. Remove belly pans and install coolant hose to water pump.



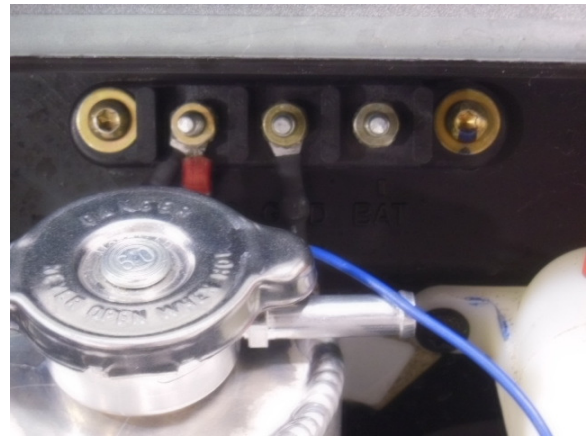
21. Route coolant hose from water pump to air box cooler inlet. Lower rear connection.



22. Connect remaining coolant hose to water cooler.

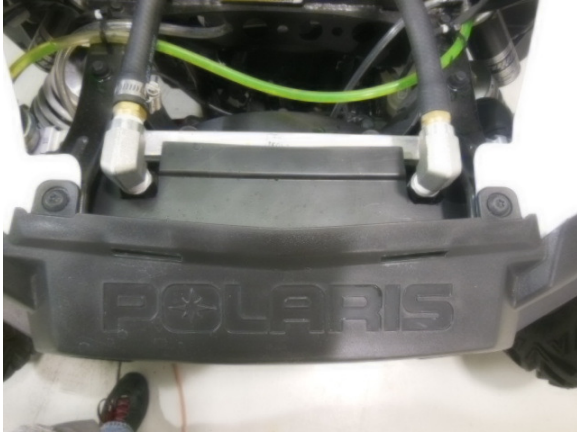


23. Route coolant hose from water pump to air box cooler outlet. Upper front connection. Secure all coolant hoses using zip ties.



24. Connect water pump fused power wire to stock ACC Terminal and connect black ground to stock GRD terminal.

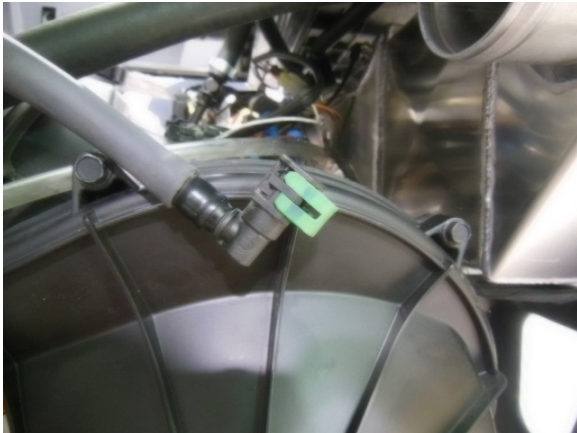
BoonDocker RZR 1000 Turbo



25. Cut valance and reinstall grill and belly pans.



26. Connect auxiliary fuel line to stock fuel rail.



27. Rotate stock fuel fitting 90 degrees so that it points up. You can twist this fitting inside the hose with your hands.



28. Connect stock fuel line to auxiliary connector.



29. Install charge tube.



30. Connect 3/16" boost hose from charge tube fitting to metal fitting on boost solenoid. Secure hose to solenoid with zip tie.

BoonDocker RZR 1000 Turbo



31. Connect 3/16" boost hose from waste gate actuator fitting to perpendicular plastic fitting on boost solenoid. Secure hose to solenoid with zip tie.



32. Secure boost solenoid with a zip tie to stock harness bellow sway bar.



33. Install turbo outlet pipe and muffler.



34. Install BoonDocker Control Box as per control box instructions.

35. Check all fluids and Enjoy!