



BoonDocker

P E R F O R M A N C E

***Kawasaki KX450 Turbo
Installation Instructions***



BoonDocker Kawasaki Turbo



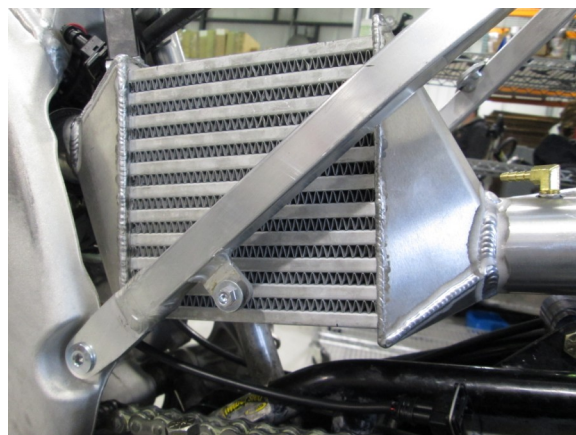
1. Remove seat, side panels, tank, silencer, sub frame, fender & air box.



2. Route control box from handle bars along wire harness. Mount to the handlebars. Zip tie wire harnesses together away from hot parts. Ground on the frame to a good ground.



3. Remove air temp sensor & o-ring from the stock air box and install on intercooler with 2 self tapping screws. NOTE do not over tighten screws.



4. Install intercooler with silicone pieces on both ends with 2 hose clamps on each end. Plug in both air temp sensors.



5. Cut out air box to fit over the intercooler and manifold. Place in sub frame to check its fit and reinstall airbox to frame and install sub frame back into place. (the top is facing down)



6. Cut rear fender on left side to fit around actuator and actuator bracket.

BoonDocker Kawasaki Turbo



7. Drill 3/4 hole size on left of rear fender to fit feed line through



8. Drill 2 13/64 size holes to fit a zip tie through to mount boost solenoid. Make sure the seat & all related parts will clear the lines & solenoid.



9. Install oil filter cover. Make sure the filter is installed correctly. Install oil pressure feed line Route through frame and manifold as shown.



10. Install oil drain line. Install 2 oil seal rings between stator cover & banjo fitting on the Mag cover for sealing purposes and mount hose loom clamp on transmission housing as shown.

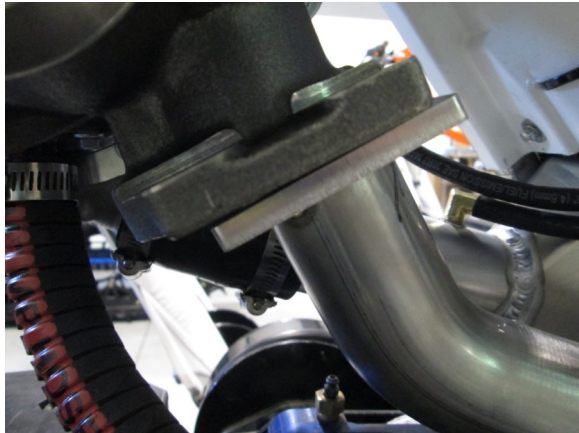


11. Install exhaust inlet with clamp. Leave loose for fitting purposes.



12. Mount turbo. Actuator bracket hooks to left side of sub frame. You possibly will have to loosen the actuator nuts for fitting purposes.

BoonDocker Kawasaki Turbo



13. Place exhaust gasket in-between inlet and turbo & install exhaust bracket. Put bolts and nuts into place.



14. Mount exhaust bracket to right rear fender. Leave loose for mounting. Install muffler and put inlet bolts into place with nut on. Tighten actuator, exhaust brackets & exhaust inlet.



15. Route oil feed line through sub frame to the left side and through the 3/4 hole. Make sure rubbing won't occur.



16. Route oil drain line to the right of Timber-sled frame and hook to turbo. Zip tie to frame and tighten clamp.

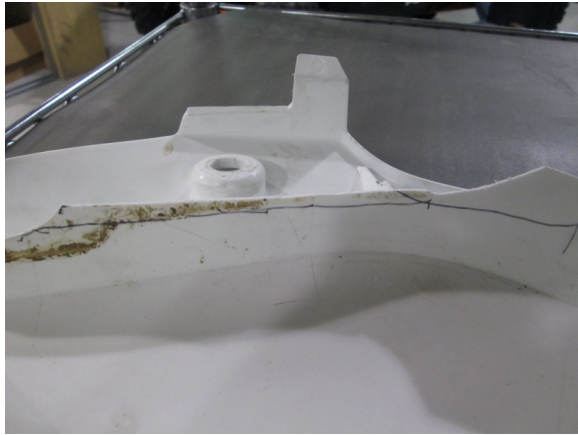


17. Install actuator solenoid lines. Follow the control box instructions for proper installation.



18. If you have black Polly line you will need to remove the line carefully from quick connections & install fuel line. If cutting stock fuel line cut on straight of the line elsewhere might leak.

BoonDocker Kawasaki Turbo



19. Trim left side of rear panel to fit over actuator.



20. Cut left side of rear panel to fit air filter.



21. Install side panels, and seat.



22. Start bike, check oil pressure and check for leaks. You might have to cut co length.

23. Don't exceed 12 pounds of boost.