



BoonDocker

PERFORMANCE

Honda CRF450 Turbo Installation Instructions



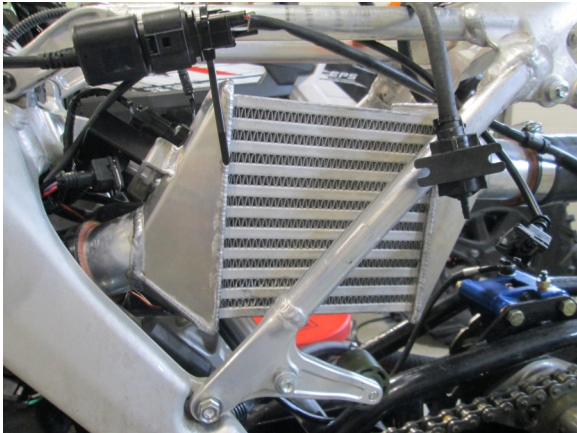
BoonDocker Honda 450 Turbo



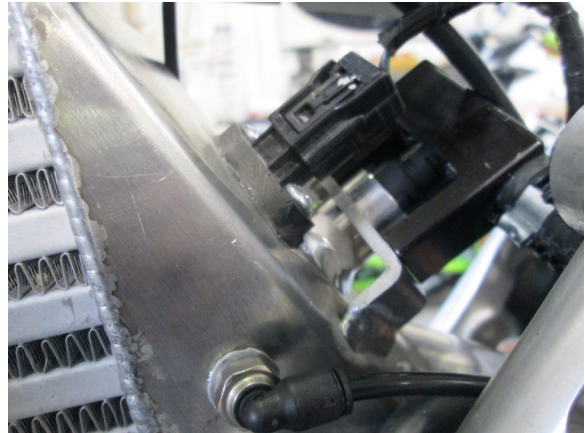
1. Remove the seat, tank, side panels, sub frame and air box. Remove air temp sensor from air box. Install the control box now.



2. Cut fuel line 2" from hose end. Put a clamp on each cut end and insert brass T fitting on auxiliary injector line face towards the back of the bike. Route under frame.



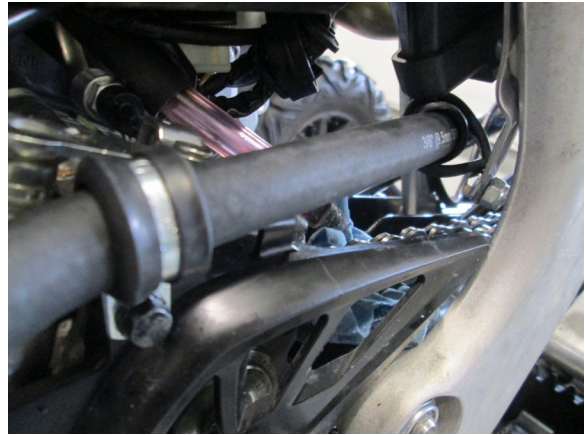
3. When installing the intercooler the 2" long piece of silicone tube goes between the throttle body & intercooler. 3" piece goes between the turbo & intercooler.



4. Put injector in place with silicone before installing intercooler and face the plug towards the throttle body. Install the temp sensor so the plug is facing upward (as shown).



5. Install exhaust inlet with the clamp placed at the end of the manifold. Leave clamp loose till turbo and brackets are tightened in place.



6. Place oil drain line like shown with the brackets shown through the frame. Use chain guard bolt to fasten the bracket down. Also to the bracket just under the ECU with a bolt & nut.

Revised 2/28/2014

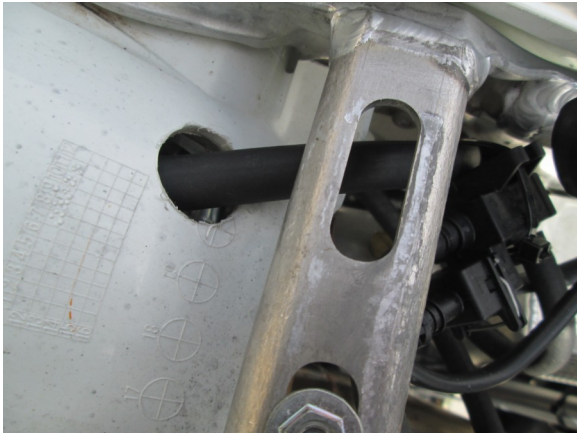
BoonDocker Honda 450 Turbo



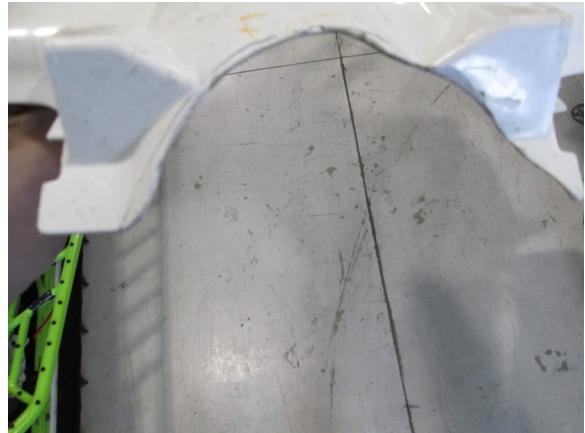
7. On the banjo bolt 2 copper washers on the inside, 1 on the outside by the bolt head. Route along right side of Timbersled frame to the turbo.



8. Route oil feed line along drain line till the back of the intercooler. Use smaller bolt and copper washers then tighten down on oil filter cover.



9. Drill a 3/4" hole on the rear fender for the feed line to go through.



10. Trim fender like shown to fit around intercooler and exhaust inlet (this is from the front of the fender view).



11. Trim fender as shown to clear the waste gate actuator rod.



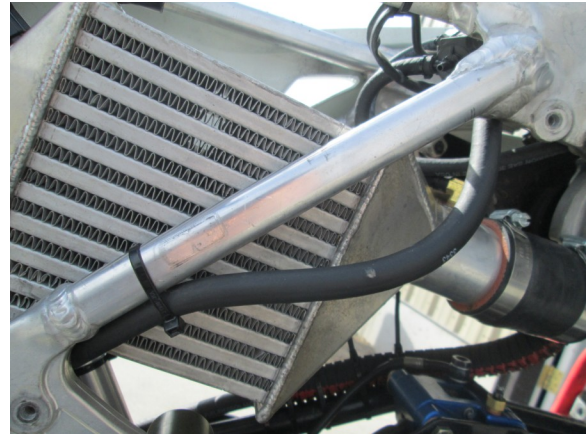
12. Trim fender to fit around the actuator and bracket.

Revised 2/28/2014

BoonDocker Honda 450 Turbo



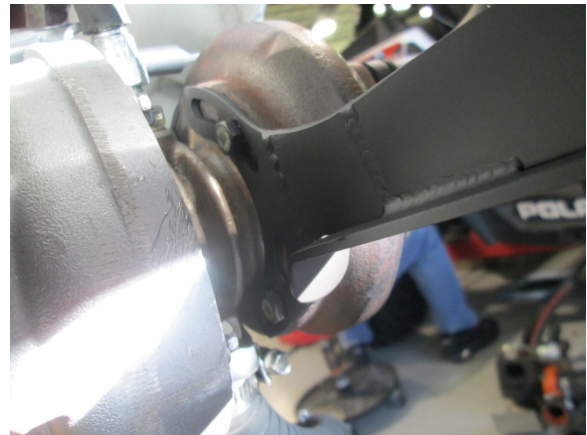
13. Install gasket between flanges, put the bolts and nuts loosely on. Tighten the silicone clamp down and the exhaust bolts down after step #15.



14. Run feed line along the left side of inter-cooler up to the 3/4" hole drilled & zip tie in place.



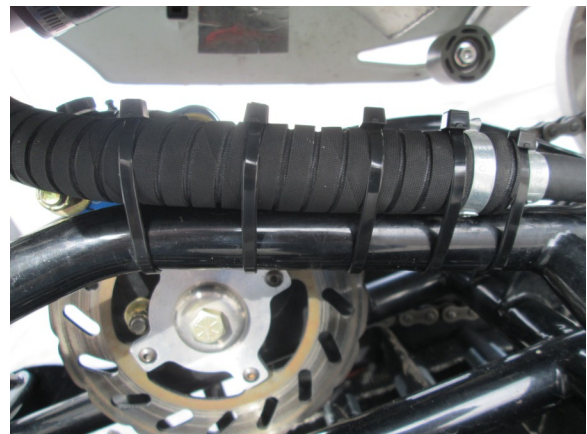
15. Place muffler as shown with the Bracket. Put nuts on the muffler evenly do not tighten yet. Place a bolt on the exhaust and actuator bracket to fasten turbo to the frame. Tighten evenly.



16. Place muffler support bracket in place leave bolts loose until the muffler bracket clamp is tightened.



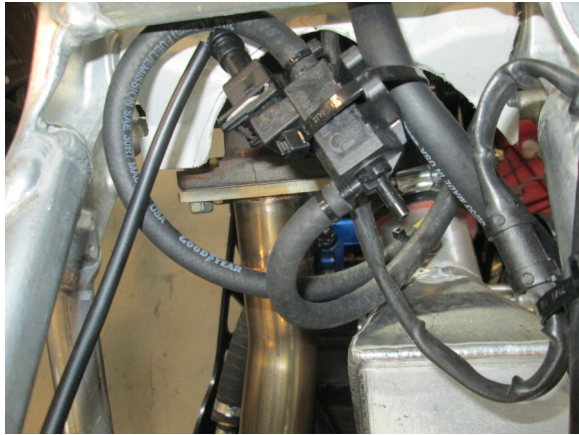
17. Place clamp around the muffler and support. As you tighten down. Keep it aligned and in place. You may have to lift on the muffler to align correctly. Tighten all turbo bolts.



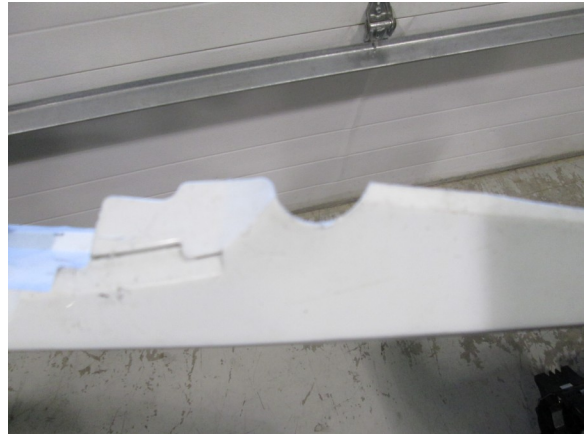
18. Route drain line, install line to turbo drain & zip tie the line to the timber sled frame (as shown). Tighten hose clamp for drain.

Revised 2/28/2014

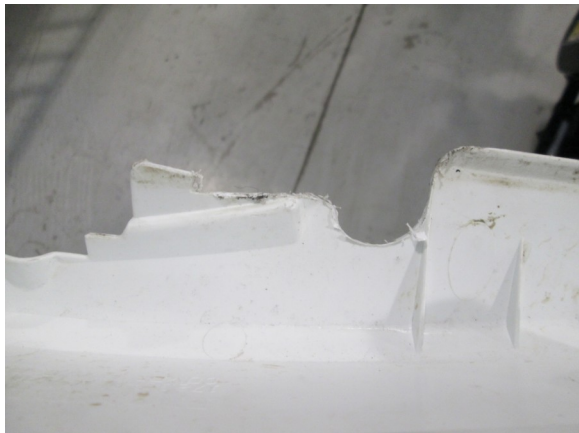
BoonDocker Honda 450 Turbo



19. Zip tie boost solenoid to the oil feed line above intercooler.



20. Trim right fender to assure proper fitment around turbo and muffler. NOTE: you have to leave the tab part on the fender to ensure the side panel to fit correct.



21. Trim left side panel to fix around actuator and bracket. (Inside View)



22. Route feed line through hole in the fender to the feed line fitting on the top of the turbo.



23. Once you have the seat, tank and panels installed start the bike to check if oil is coming out of the oil feed line, turn off bike and finish installing the line.

Revised 2/28/2014