



*Polaris Axys TiAL Exhaust
Installation Instructions*

BoonDocker Axys Turbo



1. Install the TiAL muffler by placing the end of the muffler into the tunnel exhaust reinforcement plate and aligning the muffler to the TiAL exhaust housing on the turbo.



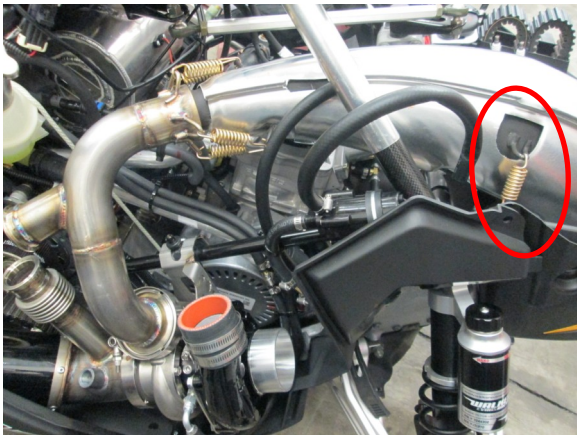
2. Install a V-band clamp between the exhaust housing and the muffler. Align the clamp so that the bolt is on the bottom.



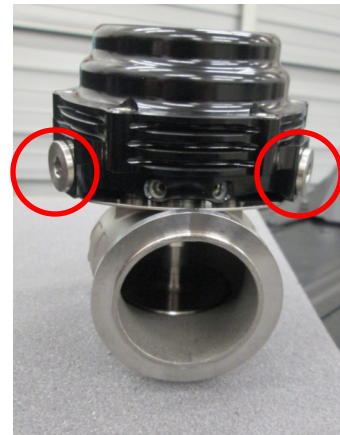
3. Install the turbo inlet between the exhaust housing and the exhaust pipe using the stock donut. Install a V-band clamp between the exhaust housing and the turbo inlet.



4. Double spring the turbo inlet to the exhaust pipe.



Note: If you are having trouble aligning the turbo inlet with the exhaust pipe, remove the spring in the center of the exhaust pipe, install the inlet, and then reinstall the spring.



5. Plug the two bottom air holes on the front of the TiAL wastegate. Be sure to use Loctite.

BoonDocker Axys Turbo



6. Install a banjo fitting using Loctite into the lower air hole on the back of the TiAL wastegate (A). Leave the upper air hole open (B). Leave the two water inlet ports open (C).



7. Install the TiAL wastegate between the turbo inlet and muffler with the black housing on the wastegate facing to the left. Secure the waste gate using the small V-band clamps.



8. Install the black hose between the banjo fitting on the TiAL wastegate and the perpendicular barb on the boost solenoid. Your TiAL exhaust system is now installed.