

Sample Information

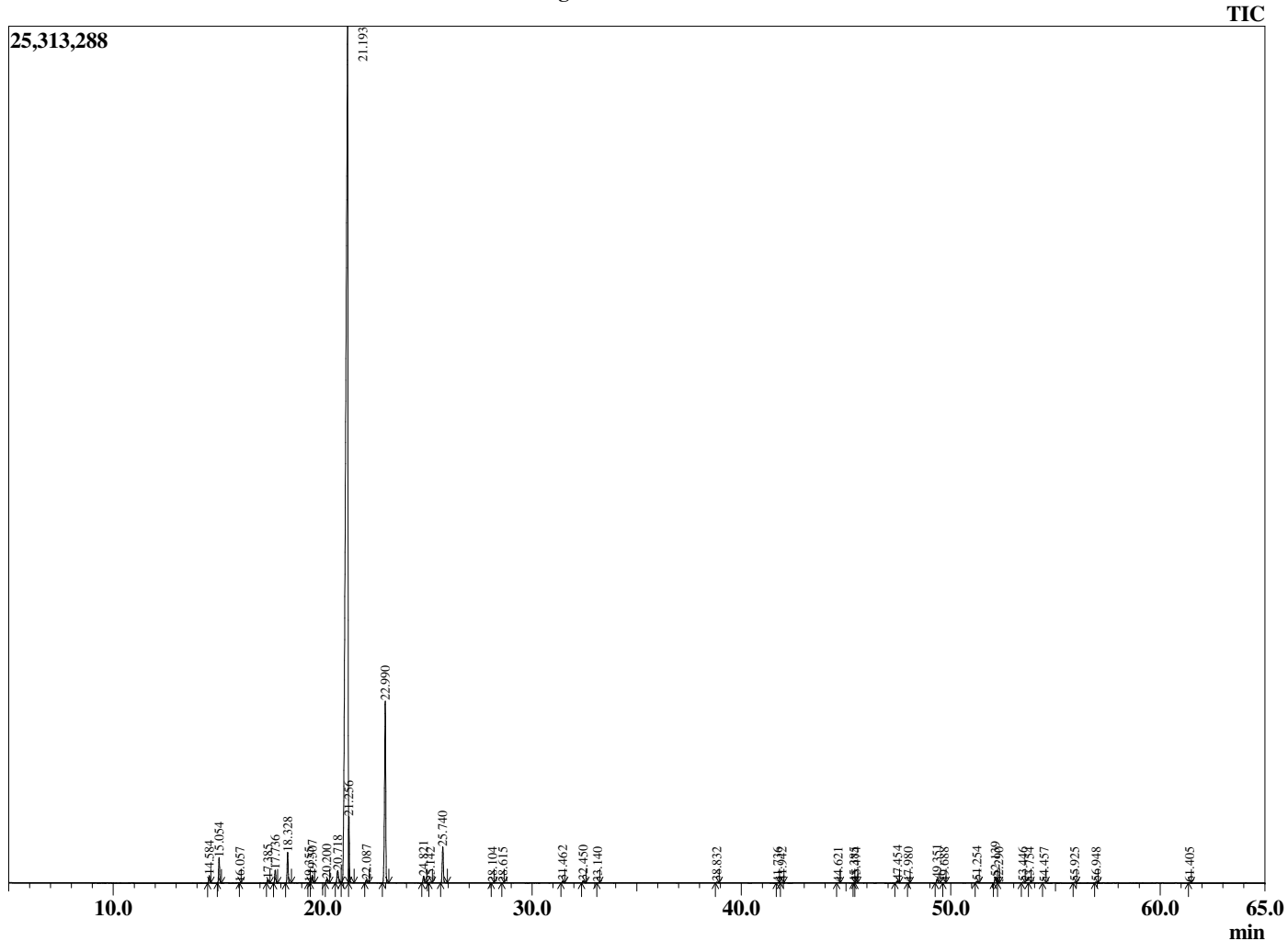
Analyzed by : Dr. Robert S. Pappas
 Analyzed : 7/12/2020 7:39:22 AM
 Sample Type : Essential Oil
 Sample Name : Yuzu - Edens Garden
 Sample ID : BA18FBB
 Injection Volume : 0.10
 Instrument ID: : GC-2



Peak Report TIC

R.Time	Name	Area%
14.584	alpha-Thujene	0.29
15.054	alpha-Pinene	1.02
16.057	Camphene	0.00
17.385	Sabinene	0.16
17.736	beta-Pinene	0.56
18.328	Myrcene	1.35
19.355	Pseudolimonene	0.01
19.507	alpha-Phellandrene	0.35
20.200	alpha-Terpinene	0.18
20.718	para-Cymene	0.77
21.193	Limonene	80.88
21.256	beta-Phellandrene	1.84
22.087	trans-beta-Ocimene	0.14
22.990	gamma-Terpinene	9.03
24.821	Terpinolene	0.34
25.142	para-Cymenene	0.03
25.740	Linalool	1.74
28.104	cis-Limonene oxide	0.01
28.615	Unidentified	0.01
31.462	Terpinen-4-ol	0.09
32.450	alpha-Terpineol	0.12
33.140	Decanal	0.01
38.832	Thymol	0.04
41.736	cis-delta-Elementene	0.02
41.942	trans-delta-Elementene	0.03
44.621	alpha-Copaene	0.02
45.385	beta-Cubebene	0.01
45.474	beta-Elementene	0.03
47.454	beta-Caryophyllene	0.11
47.980	gamma-Elementene	0.01
49.351	trans-beta-Farnesene	0.20
49.688	alpha-Humulene	0.02
51.254	Germacrene D	0.08
52.139	Bicyclogermacrene	0.32
52.290	alpha-Murolene	0.01
53.446	delta-Cadinene	0.04
53.754	beta-Sesquiphellandrene	0.01
54.457	(Z)-9-Dodecen-12-olide (Yuzu Lactone)	0.03
55.925	Germacrene B	0.04
56.948	Spathulenol	0.05
61.405	alpha-Cadinol	0.01
		100.00

Chromatogram Yuzu - Edens Garden



Comments:

The analysis of this Yuzu, Distilled batch sample meets the expected chemical profile for authentic essential oil of *Citrus junos*. No contamination or adulteration was detected.

The results provided in this GCMS quality analysis reflect the chemical composition of the oil and lot referenced above on the date of analysis.