

Sample Information

Analyzed by : Dr. Robert S. Pappas
 Analyzed : 10/24/2018 8:39:38 AM
 Sample Type : Essential Oil
 Sample Name : Ylang Ylang I - Edens Garden
 Sample ID : AH15JB
 Injection Volume : 0.10
 Instrument ID : GC-3

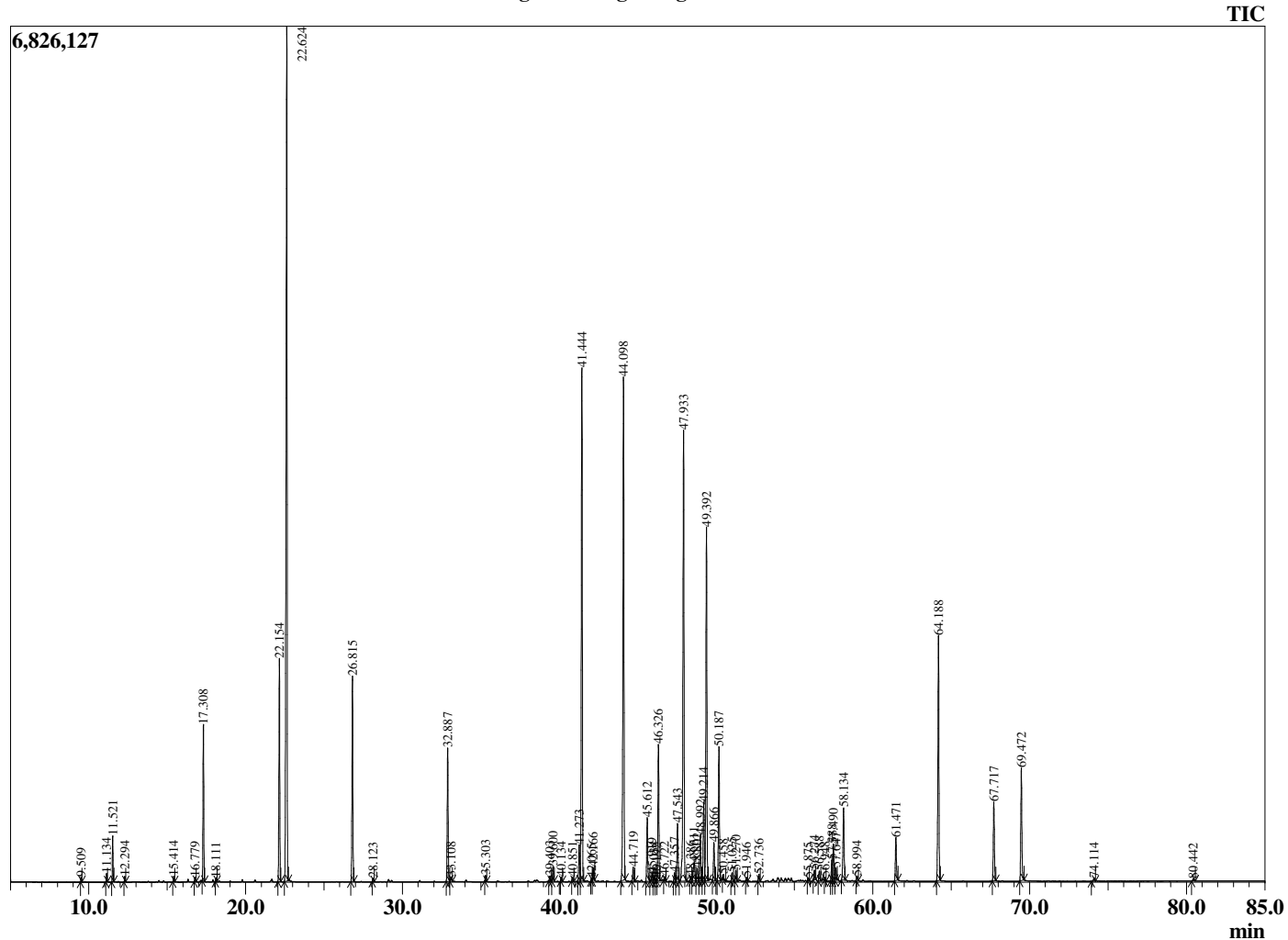


Peak Report TIC

R.Time	Name	Area%
9.509	2-Methylbutyl acetate	0.06
11.134	Amyl acetate	0.11
11.521	Prenyl acetate	0.59
12.294	alpha-Pinene	0.07
15.414	Myrcene	0.08
16.779	Hexyl acetate	0.07
17.308	para-Methylanisole	2.44
18.111	1,8-Cineole	0.06
22.154	Methyl benzoate	3.82
22.624	Linalool	18.03
26.815	Benzyl acetate	3.63
28.123	Terpinen-4-ol	0.06
32.887	Geraniol	2.50
33.108	2-Phenethyl acetate	0.09
35.303	(E)-Anethole	0.10
39.403	alpha-Cubebene	0.10
39.600	Eugenol	0.27
40.134	Neryl acetate	0.07
40.851	alpha-Ylangene	0.07
41.273	alpha-Copaene	0.74
41.444	Geranyl acetate	10.46
42.065	beta-Cubebene	0.04
42.166	beta-Elementene	0.24
44.098	beta-Caryophyllene	10.83
44.719	beta-Copaene	0.27
45.612	(E)-Cinnamyl acetate	1.33
45.919	cis-Murrola-3,5-diene	0.16
46.034	trans-Murrola-3,5-diene	0.09
46.192	trans-beta-Farnesene	0.05
46.326	alpha-Humulene	2.88
46.722	cis-Cadina-1(6),4-diene	0.07
47.357	10-beta-H-Cadina-1(6),4-diene	0.18
47.543	trans-Cadina-1(6),4-diene	1.26
47.933	Germacrene D	10.13
48.386	Prenyl benzoate	0.07
48.611	trans-Murrola-4(14),5-diene	0.58
48.802	Bicyclogermacrene	0.28
48.992	alpha-Muurolene	0.96
49.214	(Z,E)-alpha-Farnesene	1.76
49.392	(E,E)-alpha-Farnesene	7.24
49.866	gamma-Cadinene	0.75
50.187	delta-Cadinene	2.79
50.458	Zonarene	0.09
51.025	trans-Cadine-1,4-diene	0.17
51.270	alpha-Cadinene	0.21
51.946	Elemol	0.06
52.736	trans-Nerolidol	0.14
55.875	1,10-di-epi-Cubanol	0.05
56.274	Humulane-1,6-dien-3-ol	0.18
56.588	1-epi-Cubanol	0.21
56.948	Unidentified	0.05
57.388	alpha-Muurolol (=Torreyol)	0.45
57.490	epi-alpha-Cadinol	0.83
57.647	delta-Cadinol	0.25
58.134	alpha-Cadinol	1.68
58.994	Unidentified	0.09
61.471	(2E,6E)-Farnesol	0.88
64.188	Benzyl benzoate	5.15
67.717	Farnesyl acetate	1.64
69.472	Benzyl salicylate	2.36
74.114	Geranyl benzoate	0.08
80.442	Benzyl cinnamate	0.05
		100.00

This report is valid for 1 year from the analyzed date.

Chromatogram Ylang Ylang I - Edens Garden



Comments:

The analysis of this Ylang Ylang I batch sample meets the expected chemical profile for authentic essential oil of *Cananga odorata*. No contamination or adulteration was detected.