

Sample Information

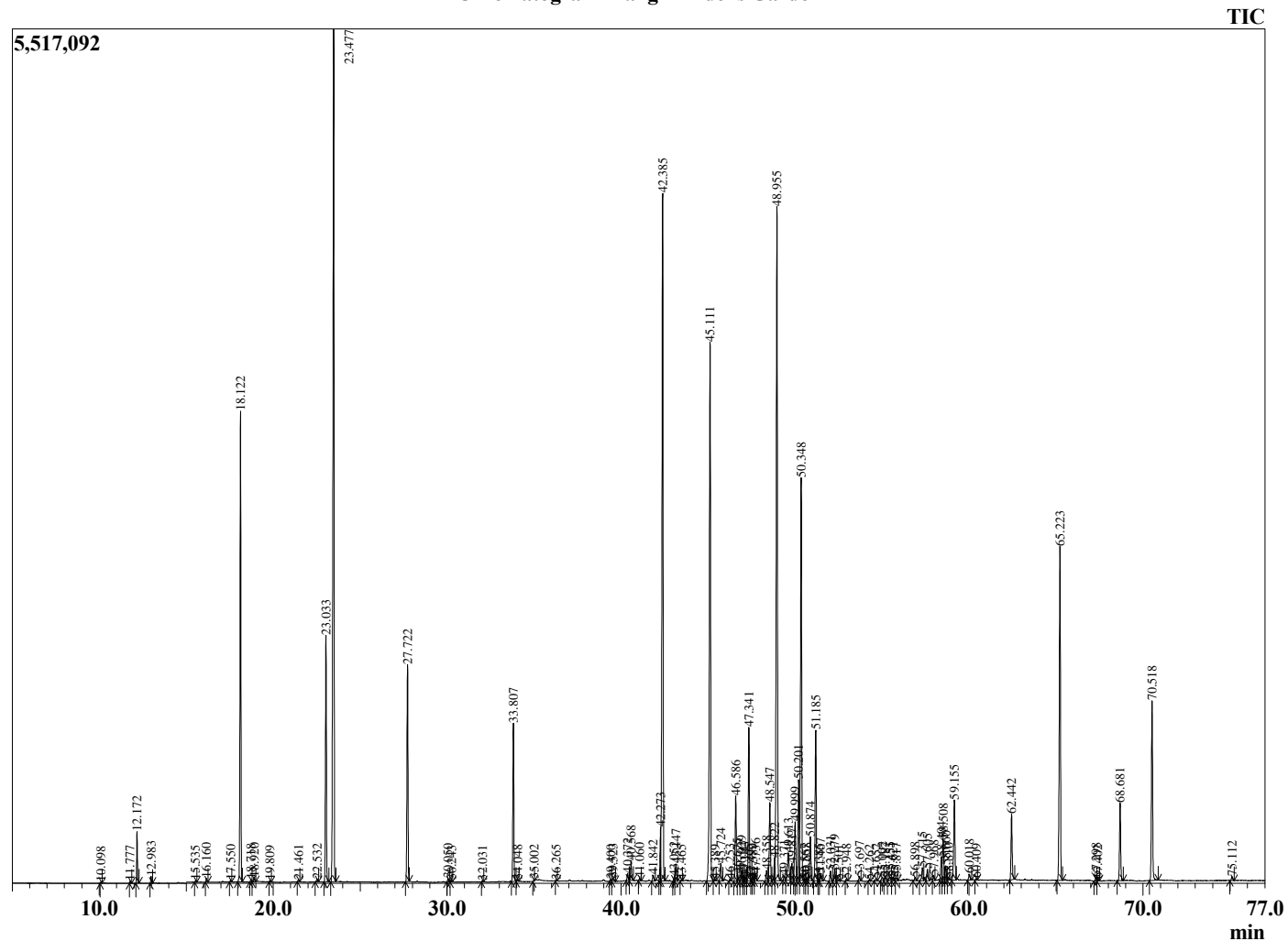
Analyzed by : Dr. Robert S. Pappas
 Analyzed : 10/30/2020 4:17:09 AM
 Sample Type : Essential Oil
 Sample Name : Ylang I - Edens Garden
 Sample ID : BA29AQ
 Injection Volume : 0.10
 Instrument ID : GC-3



Peak Report TIC

R.Time	Name	Area%
3.776	2-Methyl-3-hexanone	0.01
10.098	2-Methylbutyl acetate	0.01
11.777	Amyl acetate	0.03
12.172	Prenyl acetate	0.53
12.983	alpha-Pinene	0.08
15.535	beta-Pinene	0.02
16.160	Myrcene	0.05
17.550	Hexyl acetate	0.02
18.122	para-Methylanisole	6.08
18.718	Limonene	0.04
18.920	1,8-cineole	0.06
19.809	(E)-beta-Ocimene	0.02
21.461	cis-Linalool oxide (furanoid)	0.03
22.532	trans-Linalool oxide (furanoid)	0.05
23.033	Methyl benzoate	3.34
23.477	Linalool	13.97
27.722	Benzyl acetate	3.14
30.050	alpha-Terpineol	0.05
30.243	Methyl chavicol	0.02
32.031	Nerol	0.02
33.807	Geraniol	2.33
34.048	2-Phenethyl acetate	0.03
35.002	Geranial	0.02
36.265	Unidentified	0.02
39.400	Unidentified	0.03
39.523	Unidentified	0.06
40.372	alpha-Cubebene	0.12
40.568	Eugenol	0.31
41.060	Neryl acetate	0.03
41.842	alpha-Ylangene	0.11
42.273	alpha-Copaene	0.62
42.385	Geranyl acetate	11.39
43.052	beta-Cubebene	0.07
43.147	beta-Elemene	0.32
43.465	Unidentified	0.02
45.111	beta-Caryophyllene	9.31
45.389	Unidentified	0.02
45.724	beta-Copaene	0.28
46.253	Unidentified	0.02
46.586	(E)-Cinnamyl acetate	1.36
46.675	Unidentified	0.10
46.929	cis-Murrola-3,5-diene	0.17
47.047	trans-Murrola-3,5-diene	0.09
47.143	(E)-beta-Farnesene	0.06
47.341	alpha-Humulene	2.47
47.492	Unidentified	0.03
47.589	cis-Murrola-4(14),5-diene	0.04
47.736	cis-Cadina-1(6),4-diene	0.11
48.358	10-beta-H Cadina-1(6),4-diene	0.18
48.547	trans-Cadina-1(6),4-diene	1.28
48.822	alpha-Amorphene	0.29
48.955	Germacrene D	11.51
49.371	Prenyl benzoate	0.08
49.613	trans-Muurolo-4(14),5-diene	0.64
49.817	Bicyclogermacrene	0.31
49.999	alpha-Muuroloene	1.07
50.201	(Z,E)-alpha-Farnesene	1.66
50.348	(E,E)-alpha-Farnesene	6.74
50.567	Unidentified	0.02
50.658	Unidentified	0.04
50.874	gamma-Cadinene	0.71
51.185	delta-Cadinene	2.45

Chromatogram Ylang I - Edens Garden



Comments:

The analysis of this Ylang Ylang I batch sample meets the expected chemical profile for authentic essential oil of *Cananga odorata*. No contamination or adulteration was detected. The results provided in this GCMS quality analysis reflect the chemical composition of the oil and lot referenced above on the date of analysis.

R.Time	Name	Area%
51.385	cis-Calamenene	0.02
51.467	Zonarene	0.14
52.031	trans-Cadina-1,4-diene	0.16
52.279	alpha-Cadinene	0.19
52.501	Unidentified	0.03
52.948	Elemol	0.03
53.697	trans-Nerolidol	0.07
54.262	Unidentified	0.03
54.652	Unidentified	0.05
55.002	10-epi-Junenol	0.07
55.187	Globulol	0.08
55.455	Unidentified	0.08
55.621	Unidentified	0.06
55.817	Guaiol	0.05
56.898	1,10-di-epi-Cubenol	0.06
57.315	Humulane-1,6-dien-3-ol	0.26
57.605	1-epi-Cubenol	0.21
57.968	Cubenol	0.09
58.404	tau-Cadinol	0.40
58.508	epi-alpha-Cadinol	0.74
58.660	delta-Cadinol	0.25
58.810	Unidentified	0.04
59.155	alpha-Cadinol	1.46
60.018	Striatol	0.11
60.409	Unidentified	0.03
62.442	(E,E)-Farnesol	1.06
65.223	Benzyl benzoate	5.67
67.298	Farnesyl acetate isomer	0.06
67.402	Unidentified	0.02
68.681	Farnesyl acetate	1.25
70.518	Benzyl salicylate	3.08
75.112	Geranyl benzoate	0.07
		100.00