

Sample Information

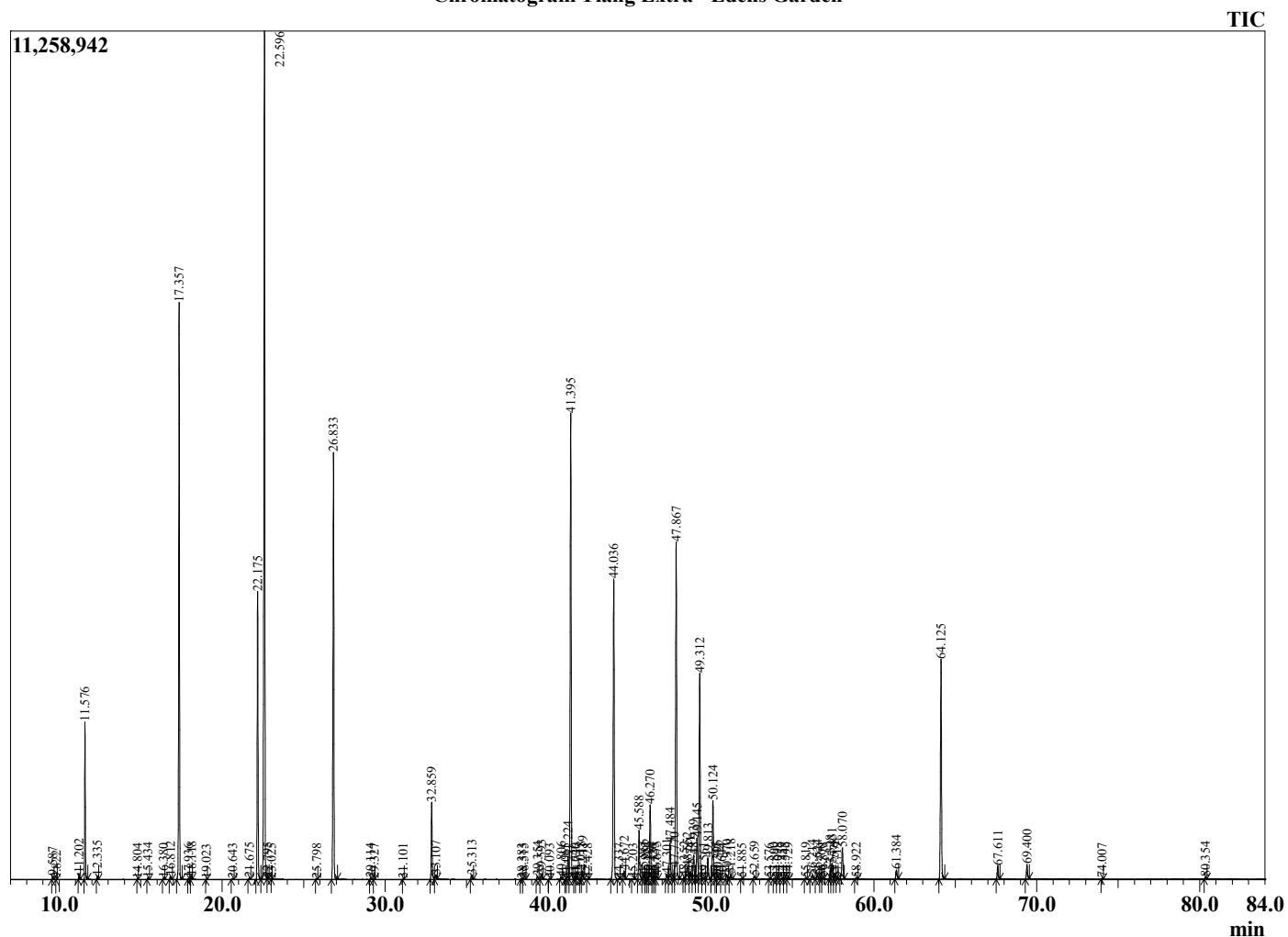
Analyzed by : Dr. Robert S. Pappas
 Analyzed : 7/29/2022 11:29:28 AM
 Sample Type : Essential Oil
 Sample Name : Ylang Extra - Edens Garden
 Sample ID : EG Lot #BB27HT
 Injection Volume : 0.10
 Instrument ID : GC-4



Peak Report TIC

R.Time	Name	Area%
9.587	2-Methylbutyl acetate	0.05
9.822	Unidentified	0.00
11.202	Amyl acetate	0.09
11.576	Prenyl acetate	2.32
12.335	alpha-Pinene	0.06
14.804	beta-Pinene	0.01
15.434	Myrcene	0.03
16.380	Hex-3(Z)-enyl acetate	0.02
16.812	Hexyl acetate	0.06
17.357	para-Methylanisole	10.68
17.936	Limonene	0.02
18.118	1,8-cineole	0.05
19.023	(E)-beta-Ocimene	0.01
20.643	meta-Cresol	0.02
21.675	trans-Linalool oxide (furanoid)	0.03
22.175	Methyl benzoate	5.50
22.596	Linalool	19.66
22.795	Hotrienol	0.03
23.025	2,4-Dimethylanisole	0.00
25.798	Camphor	0.02
26.833	Benzyl acetate	9.06
29.114	alpha-Terpineol	0.03
29.327	Estragole	0.01
31.101	Nerol	0.01
32.859	Geraniol	1.59
33.107	2-Phenethyl acetate	0.09
35.313	(E)-Anethole	0.10
38.383	Unidentified	0.02
38.515	Unidentified	0.04
39.354	alpha-Cubebene	0.07
39.593	Eugenol	0.12
40.093	Neryl acetate	0.02
40.806	alpha-Ylangene	0.06
41.065	Unidentified	0.01
41.224	alpha-Copaene	0.53
41.395	Geranyl acetate	10.41
41.640	Unidentified	0.02
41.726	Unidentified	0.02
42.018	beta-Cubebene	0.04
42.119	beta-Elemene	0.21
42.428	beta-Cubebene	0.01
44.036	trans-beta-Caryophyllene	7.31
44.337	Unidentified	0.01
44.672	beta-Copaene	0.19
45.203	Unidentified	0.02
45.588	(E)-Cinnamyl acetate	1.12
45.866	cis-Murrola-3,5-diene	0.13
45.982	trans-Murrola-3,5-diene	0.05
46.126	(E)-beta-Farnesene	0.03
46.270	alpha-Humulene	1.84
46.426	Unidentified	0.02
46.535	Unidentified	0.03
46.675	cis-Cadina-1(6),4-diene	0.07
47.301	10-beta-H-Cadina-1(6),4-diene	0.12
47.484	trans-Cadina-1(6),4-diene	0.88
47.770	alpha-Amorphene	0.20
47.867	Germacrene D	8.32
48.352	Prenyl benzoate	0.04
48.552	trans-Murrola-4(14),5-diene	0.43
48.741	Bicyclogermacrene	0.22
48.939	alpha-Murolene	0.58
49.145	(Z,E)-alpha-Farnesene	1.10

Chromatogram Ylang Extra - Edens Garden



Comments:

The analysis of this Ylang Extra batch sample meets the expected chemical profile for authentic essential oil of Cananga odorata.

No contamination or adulteration was detected. The results provided in this GCMS quality analysis reflect the chemical composition of the oil and lot referenced above on the date of analysis.

©Copyright 2022 by Essential Oil University. All rights reserved. Any publishing, copying, use, dissemination, or distribution of this report, including online, without the express written permission of Essential Oil University is strictly prohibited.

R.Time	Name	Area%
49.312	(E,E)-alpha-Farnesne	4.82
49.561	alpha-Bulnesene	0.05
49.813	gamma-Cadinene	0.53
50.124	delta-Cadinene	1.87
50.345	trans-Calamenene	0.03
50.396	Zonarene	0.10
50.644	Unidentified	0.01
50.970	trans-Cadina-1,4-diene	0.12
51.218	alpha-Cadinene	0.13
51.885	alpha-Elemeol	0.02
52.659	(E)-Nerolidol	0.08
53.576	Unidentified	0.02
53.890	10-epi-Junenol	0.03
54.098	Globulol	0.03
54.359	Unidentified	0.03
54.545	Unidentified	0.04
54.729	Guaiol	0.02
55.819	1,10-di-epi-Cubenol	0.03
56.214	Humulane-1,6-dien-3-ol	0.12
56.524	1-epi-Cubenol	0.11
56.760	10-epi-gamma-Eudesmol	0.01
56.878	Unidentified	0.04
57.328	tau-Cadinol	0.23
57.431	epi-alpha-Cadinol	0.43
57.578	delta-Cadinol	0.15
57.719	Cadinol isomer	0.02
58.070	alpha-Cadinol	0.85
58.922	Striatol	0.04
61.384	(2E,6E)-Farnesol	0.24
64.125	Benzyl benzoate	5.27
67.611	Farnesyl acetate	0.33
69.400	Benzyl salicylate	0.34
74.007	Geranyl benzoate	0.02
80.354	Benzyl cinnamate	0.04
		100.00