

Sample Information

Analyzed by : Dr. Robert S. Pappas
 Analyzed : 1/28/2019 11:33:11 PM
 Sample Type : Essential Oil
 Sample Name : Ylang, Complete - Edens Garden
 Sample ID : AI15AE
 Injection Volume : 0.10
 Instrument ID : GC-4

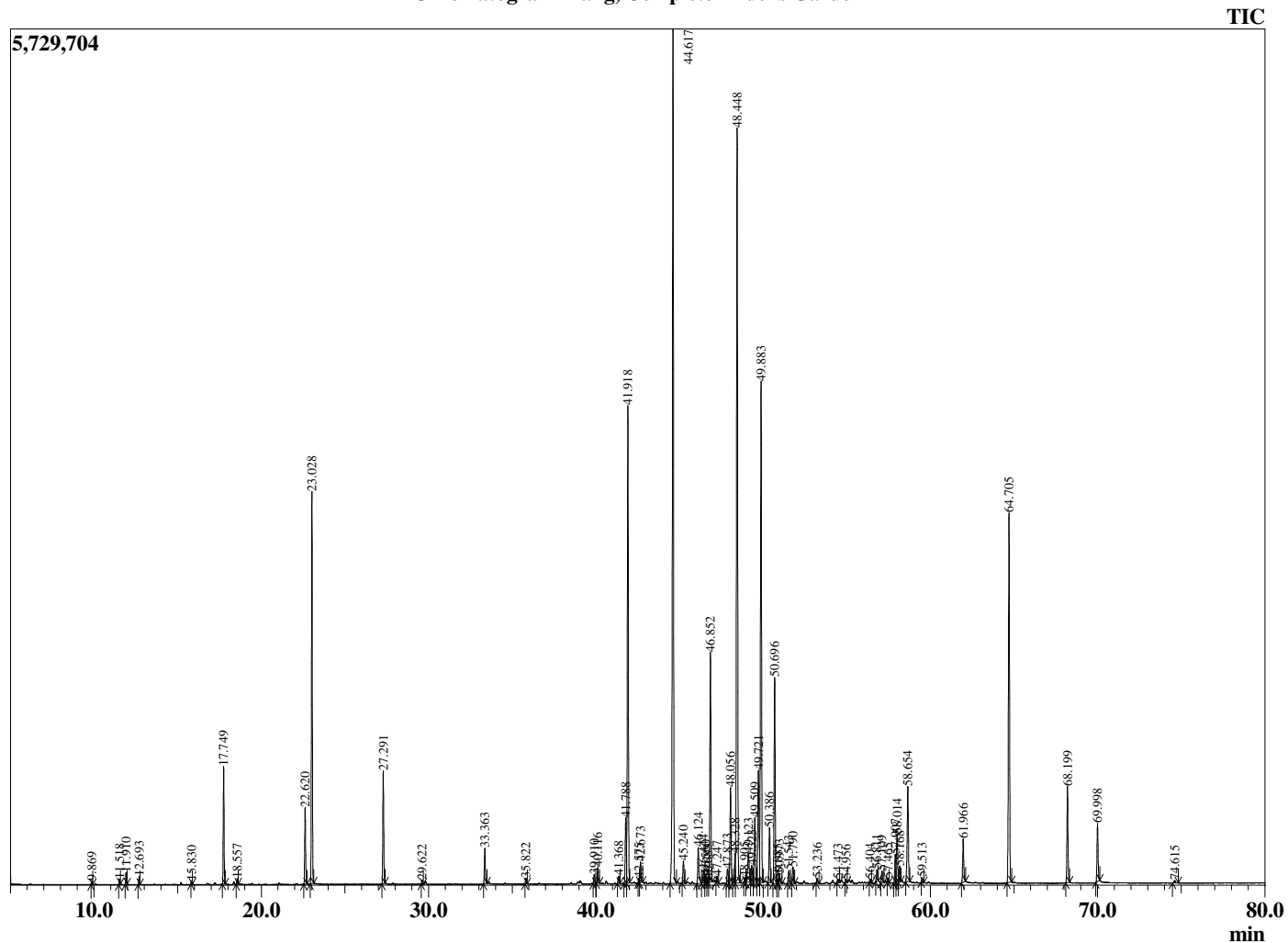


Peak Report TIC

R.Time	Name	Area%
9.869	2-Methylbutyl acetate	0.04
11.518	Amyl acetate	0.06
11.910	Prenyl acetate	0.14
12.693	alpha-Pinene	0.10
15.830	Myrcene	0.04
17.749	para-Methylanisole	1.70
18.557	1,8-Cineole	0.08
22.620	Methyl benzoate	1.20
23.028	Linalool	6.12
27.291	Benzyl acetate	1.84
29.622	alpha-Terpineol	0.06
33.363	Geraniol	0.61
35.822	(E)-Anethole	0.09
39.910	alpha-Cubebene	0.17
40.116	Eugenol	0.27
41.368	alpha-Ylangene	0.14
41.788	alpha-Copaene	1.19
41.918	Geranyl acetate	8.48
42.575	beta-Cubebene	0.07
42.673	beta-Elementene	0.39
44.617	beta-Caryophyllene	16.93
45.240	beta-Copaene	0.41
46.124	(E)-Cinnamyl acetate	0.77
46.444	cis-Murrola-3,5-diene	0.24
46.560	trans-Murrola-3,5-diene	0.14
46.683	trans-beta-Farnesene	0.05
46.852	alpha-Humulene	4.31
47.247	cis-Cadina-1(6),4-diene	0.12
47.873	10-beta-H-Cadina-1(6),4-diene	0.29
48.056	trans-Cadina-1(6),4-diene	1.87
48.328	alpha-Amorphene	0.45
48.448	Germacrene D	15.24
48.905	Prenyl benzoate	0.08
49.123	trans-Muurolo-4(14),5-diene	0.81
49.323	Bicyclogermacrene	0.37
49.509	alpha-Muuroloene	1.29
49.721	(Z,E)-alpha-Farnesene	2.36
49.883	(E,E)-alpha-Farnesene	9.70
50.386	gamma-Cadinene	1.05
50.696	delta-Cadinene	4.04
50.885	cis-Calamenene	0.09
50.973	Zonarene	0.21
51.543	trans-Cadine-1,4-diene	0.25
51.790	alpha-Muuroloene	0.31
53.236	trans-Nerolidol	0.09
54.473	10-epi-Junolol	0.07
54.956	Unidentified	0.06
56.404	1,10-di-epi-Cubanol	0.06
56.811	Humulane-1,6-dien-3-ol	0.22
57.109	1-epi-Cubanol	0.24
57.465	Unidentified	0.07
57.907	alpha-Muurolol (=Torreyol)	0.56
58.014	epi-alpha-Cadinol	1.02
58.168	delta-Cadinol	0.32
58.654	alpha-Cadinol	2.06
59.513	Unidentified	0.07
61.966	(2E,6E)-Farnesol	0.82
64.705	Benzyl benzoate	7.27
68.199	Farnesyl acetate	1.76
69.998	Benzyl salicylate	1.10
74.615	Geranyl benzoate	0.05
		100.00

This report is valid for 1 year from the analyzed date.

Chromatogram Ylang, Complete - Edens Garden



Comments:

The analysis of this Ylang, Complete batch sample meets the expected chemical profile for authentic essential oil of *Cananga odorata*. No contamination or adulteration was detected.