

Sample Information

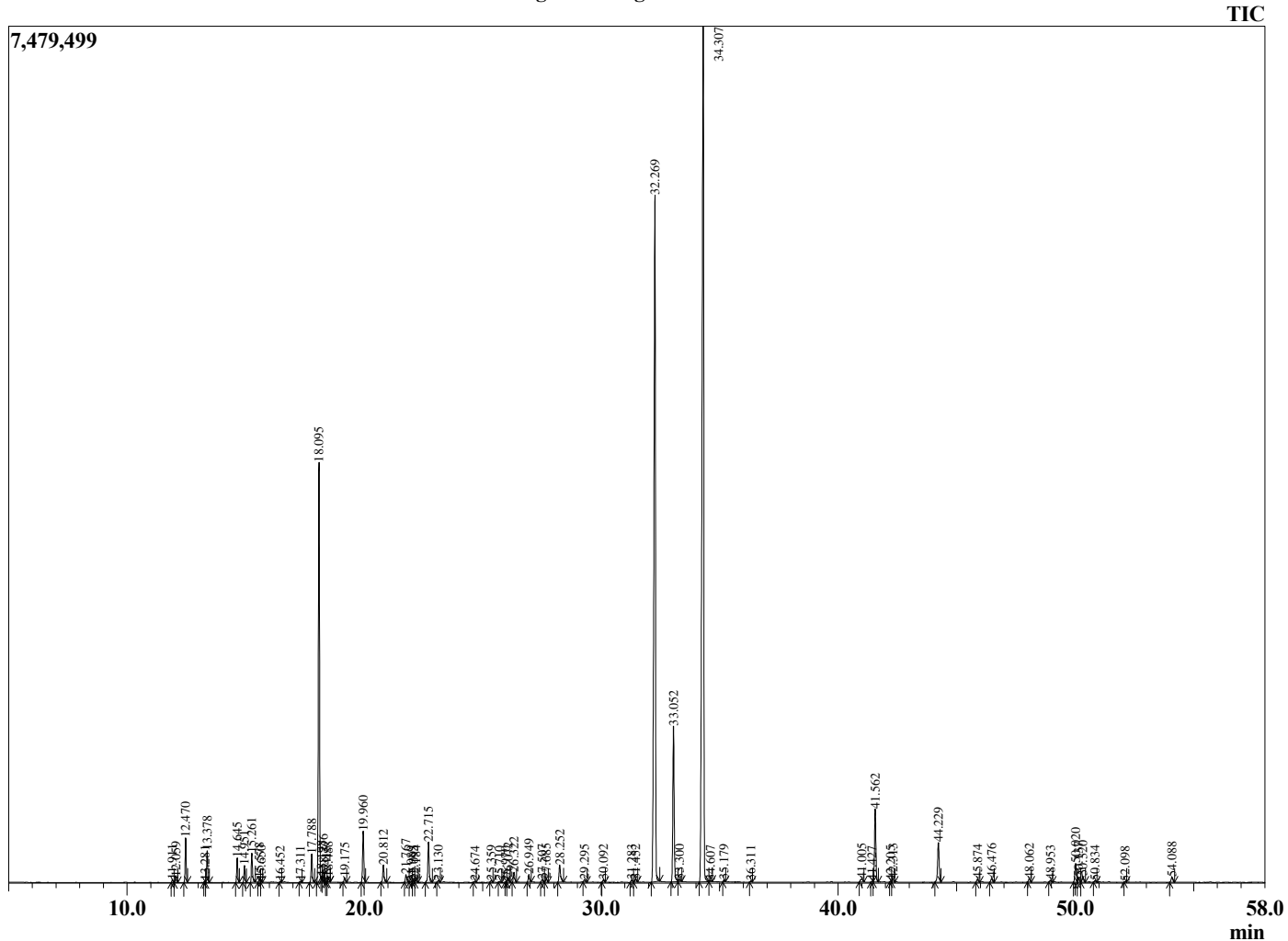
Analyzed by : Dr. Robert S. Pappas
 Analyzed : 11/20/2020 12:52:35 PM
 Sample Type : Essential Oil
 Sample Name : Xiang Mao-Edens Garden
 Sample ID : BA08GZ
 Injection Volume : 0.10
 Instrument ID : GC-4



Peak Report TIC

R.Time	Name	Area%
3.681	2-Methyl-3-buten-2-ol	0.01
11.911	Tricyclene	0.07
12.059	alpha-Thujene	0.14
12.470	alpha-Pinene	1.13
13.281	alpha-Fenchene	0.03
13.378	Camphene	0.84
14.645	Sabinene	0.65
14.951	beta-Pinene	0.46
15.261	6-Methyl hept-5-en-2-one	0.82
15.578	Myrcene	0.12
15.650	Dehydro-1,8-Cineole	0.03
16.452	Octanal	0.03
17.311	alpha-Terpinene	0.03
17.788	para-Cymene	0.86
18.095	Limonene	12.46
18.198	beta-Phellandrene	0.02
18.276	1,8-Cineole	0.28
18.415	Unidentified	0.01
18.488	(Z)-beta-Ocimene	0.16
19.175	(E)-beta-Ocimene	0.15
19.960	gamma-Terpinene	1.57
20.812	4-Nonanone	0.58
21.767	Terpinolene	0.27
21.989	Fenchone	0.03
22.095	Dehydro-para-cymene	0.06
22.184	Rosefuran	0.08
22.715	Linalool	1.35
23.130	alpha-Pinene oxide	0.06
24.674	allo-Ocimene	0.03
25.359	Epiphotocitral A	0.05
25.710	exo-Isocitral	0.03
25.970	Unidentified	0.01
26.072	trans-Chrysanthamal	0.13
26.322	Citronellal	0.35
26.949	Isoneral	0.25
27.507	Isoborneol	0.09
27.685	Borneol	0.12
28.252	Isogeranial	0.67
29.295	alpha-Terpineol	0.08
30.092	Decanal	0.09
31.283	Nerol	0.08
31.452	Citronellol	0.10
32.269	Neral	26.76
33.052	Geraniol	5.30
33.300	Piperitone	0.08
34.307	Geranial	37.14
34.607	4-Undecanone	0.04
35.179	trans-Carvone oxide	0.06
36.311	Geranyl formate	0.03
41.005	Cyclosativene	0.19
41.427	alpha-Cubebene	0.03
41.562	Geranyl acetate	2.50
42.205	beta-Cubebene	0.03
42.313	beta-Elemene	0.10
44.229	trans-beta-Caryophyllene	1.54
45.874	trans-Isoeugenol	0.11
46.476	alpha-Humulene	0.15
48.062	Germacrene D	0.13
48.953	Unidentified	0.07
50.020	gamma-Cadinene	0.69
50.137	Cubebol	0.19
50.320	delta-Cadinene	0.23

Chromatogram Xiang Mao-Edens Garden



Comments:

The analysis of this Xiang Mao batch sample meets the expected chemical profile for authentic essential oil of *Cymbopogon citratus*. No contamination or adulteration was detected. The results provided in this GCMS quality analysis reflect the chemical composition of the oil and lot referenced above on the date of analysis.

R.Time	Name	Area%
50.834	trans-gamma-Bisabolene	0.05
52.098	Elemol	0.01
54.088	Caryophyllene oxide	0.22
		100.00