

Sample Information

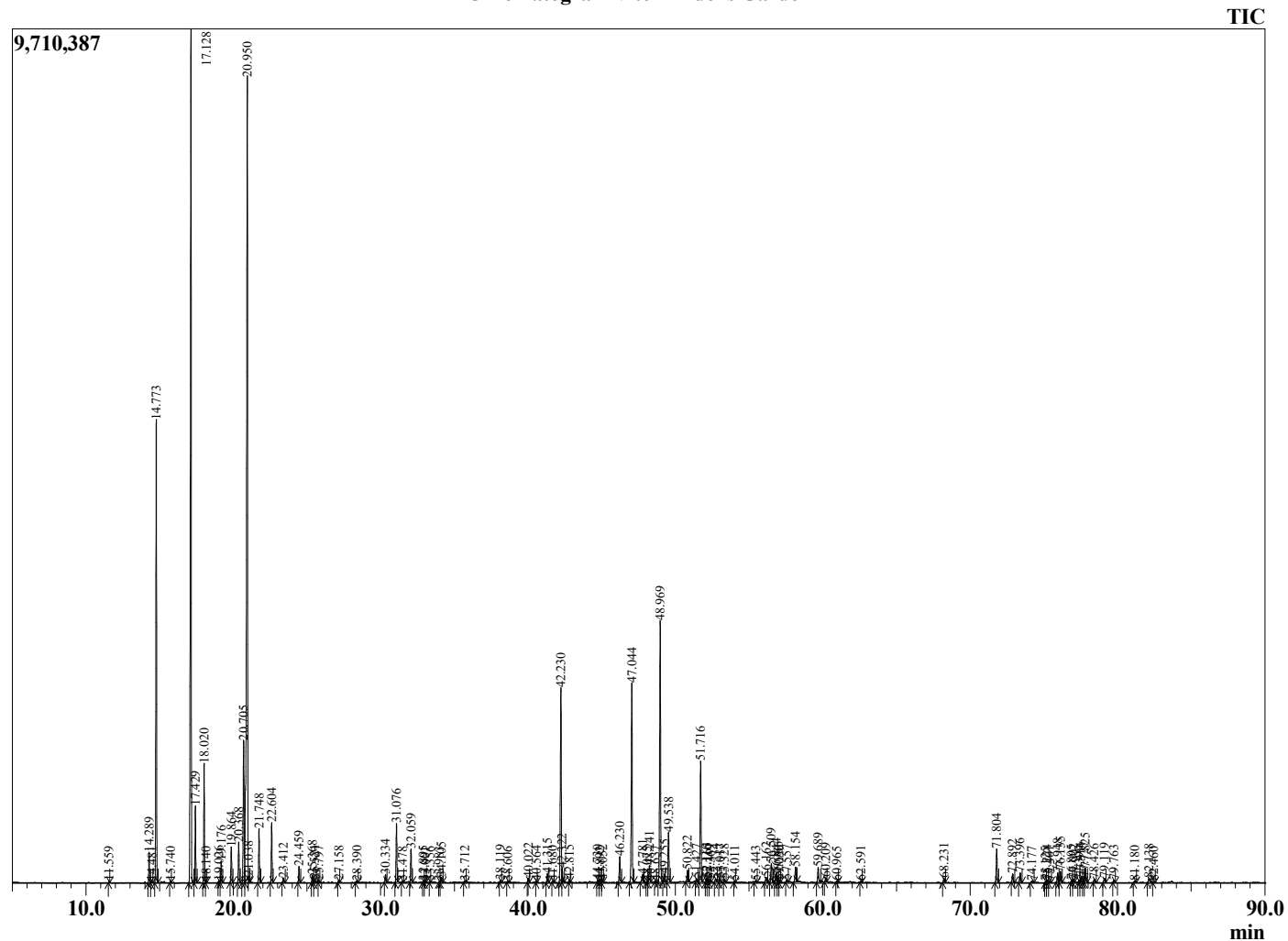
Analyzed by : Dr. Robert S. Pappas
 Analyzed : 3/6/2021 12:09:39 PM
 Sample Type : Essential Oil
 Sample Name : Vitex - Edens Garden
 Sample ID : BB22AAF
 Injection Volume : 0.10
 Instrument ID : GC-2



Peak Report TIC

R.Time	Name	Area%
11.559	Isopentyl acetate	0.02
14.289	alpha-Thujene	0.56
14.481	Unidentified	0.03
14.773	alpha-Pinene	9.23
15.740	Camphene	0.03
17.128	Sabinene	20.74
17.429	beta-Pinene	1.47
18.020	Myrcene	2.35
18.140	Unidentified	0.02
19.026	Pseudolimonene	0.03
19.176	alpha-Phellandrene	0.44
19.864	alpha-Terpinene	0.72
20.368	para-Cymene	0.88
20.705	Limonene	3.76
20.950	1,8-Cineole	22.68
21.038	Unidentified	0.02
21.748	trans-beta-Ocimene	1.11
22.604	gamma-Terpinene	1.26
23.412	trans-Sabinene hydrate	0.10
24.459	Terpinolene	0.37
25.368	Linalool	0.18
25.521	cis-Sabinene hydrate	0.07
25.797	Isoamyl isovalerate	0.06
27.158	cis-para-Menth-2-en-1-ol	0.05
28.390	trans-para-Menth-2-en-1-ol	0.05
30.334	delta-Terpineol	0.18
31.076	Terpinen-4-ol	1.35
31.478	Cryptone	0.03
32.059	alpha-Terpineol	0.79
32.895	Isoamyl hexanoate	0.04
33.001	trans-Piperitol	0.04
33.356	Unidentified	0.02
33.983	Unidentified	0.03
34.105	Citronellol	0.13
35.712	3-Methylbutyl hexanoate	0.04
38.119	Bornyl acetate	0.06
38.606	trans-Ascriдол glycol	0.03
40.022	beta-Terpinyl acetate	0.09
40.564	Unidentified	0.05
41.315	delta-Elementene	0.23
41.680	Unidentified	0.04
42.230	alpha-Terpinyl acetate	4.95
42.322	Citronellyl acetate	0.27
42.815	gamma-Terpinyl acetate	0.07
44.730	beta-Bourbonene	0.06
44.892	7-epi-Sesquithujene	0.04
45.052	beta-Elementene	0.06
46.230	alpha-Gurjunene	0.68
47.044	beta-Caryophyllene	5.28
47.781	trans-alpha-Bergamotene	0.26
48.075	Isoamyl benzoate	0.03
48.241	cis-beta-Farnesene	0.47
48.637	alpha-Guaiene	0.03
48.969	trans-beta-Farnesene	6.84
49.255	alpha-Humulene	0.21
49.538	Alloaromadendrene	1.27
50.822	Germacrene D	0.30
51.427	Viridiflorene	0.09
51.716	Bicyclogermacrene	3.17
52.110	(E,E)-alpha-Farnesene	0.09
52.165	Unidentified	0.09
52.369	beta-Bisabolene	0.08

Chromatogram Vitex - Edens Garden



Comments:

The analysis of this Vitex batch sample meets the expected chemical profile for authentic essential oil of *Vitex agnus castus*. No contamination or adulteration was detected. The results provided in this GCMS quality analysis reflect the chemical composition of the oil and lot referenced above on the date of analysis.

R.Time	Name	Area%
52.734	Unidentified	0.10
53.017	delta-Cadinene	0.09
53.328	beta-Sesquiphellandrene	0.08
54.011	Unidentified	0.03
55.443	trans-Nerolidol	0.05
56.162	Palustrol	0.15
56.509	Spathulenol	0.50
56.844	Caryophyllene oxide	0.27
56.966	Unidentified	0.16
57.050	Globulol	0.04
57.557	Viridiflorol	0.06
58.154	Ledol	0.41
59.689	Unidentified	0.42
60.209	tau-Cadinol	0.10
60.965	alpha-Cadinol	0.03
62.591	alpha-Bisabolol	0.03
68.231	Unidentified	0.12
71.804	Unidentified	0.88
72.892	Cubitene	0.24
73.396	Unidentified	0.27
74.177	Isopimaradiene	0.07
75.125	Unidentified	0.03
75.224	Unidentified	0.07
75.401	Unidentified	0.05
75.948	Unidentified	0.26
76.135	Unidentified	0.31
76.895	Unidentified	0.07
77.002	Unidentified	0.09
77.399	Unidentified	0.05
77.514	Unidentified	0.14
77.727	Geranyl linalool isomer	0.13
77.825	Unidentified	0.42
78.426	Manool oxide	0.11
79.119	Unidentified	0.13
79.763	Unidentified	0.07
81.180	Abietatriene	0.05
82.138	Unidentified	0.13
82.460	Unidentified	0.03
		100.00