

Sample Information

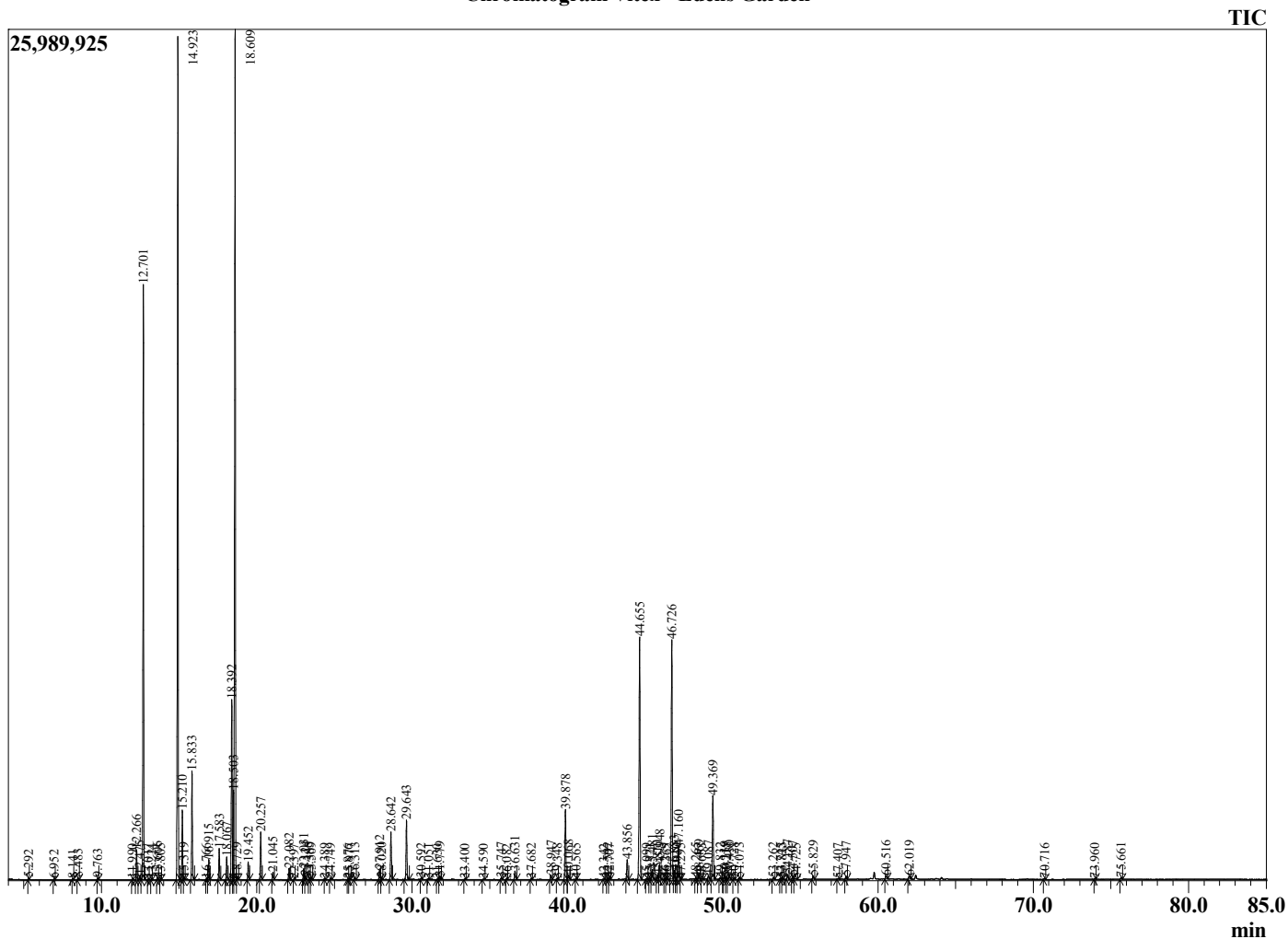
Analyzed by : Dr. Robert S. Pappas
Analyzed : 7/28/2022 1:56:59 PM
Sample Type : Essential Oil
Sample Name : Vitex - Edens Garden
Sample ID : BC06CAB
Injection Volume : 0.10
Instrument ID: : GC-3



Peak Report TIC

R.Time	Name	Area%
5.292	Isoamyl alcohol	0.03
6.952	Hexanal	0.02
8.141	4-Methyl pentanol	0.03
8.483	3-Methyl pentanol	0.04
9.763	Isopentyl acetate	0.04
11.990	Hashishene	0.02
12.266	alpha-Thujene	0.62
12.475	2-Hexyl acetate	0.09
12.701	alpha-Pinene	12.74
13.017	Unidentified	0.02
13.224	Thujadiene isomer	0.02
13.606	Camphene	0.07
13.805	Thuja-2,4(10)diene	0.02
14.923	Sabinene	20.53
15.210	beta-Pinene	1.48
15.319	Unidentified	0.04
15.833	Myrcene	2.50
16.766	Pseudolimonene	0.03
16.915	alpha-Phellandrene	0.45
17.583	alpha-Terpinene	0.75
18.067	para-Cymene	0.55
18.392	Limonene	4.90
18.503	beta-Phellandrene	1.98
18.609	1,8-cineole	22.37
18.729	2,2,6-Trimethylcyclohexanone + (Z)-beta-Oci	0.07
19.452	(E)-beta-Ocimene	0.42
20.257	gamma-Terpinene	1.16
21.045	trans-Sabinene hydrate	0.19
22.082	Terpinolene	0.29
22.397	Dehydro-para-cymene	0.01
23.031	Linalool	0.28
23.124	cis-Sabinene hydrate	0.08
23.385	Nonanal	0.06
23.509	Unidentified	0.07
24.389	3-octyl acetate	0.03
24.749	cis-para-Menth-2-en-1-ol	0.05
25.876	trans-Pinocarveol	0.02
25.977	trans-para-Menth-2-en-1-ol	0.03
26.313	Camphor	0.06
27.912	delta-Terpineol	0.26
28.020	Unidentified	0.05
28.642	Terpinen-4-ol	1.28
29.643	alpha-Terpineol	1.63
30.592	Unidentified	0.04
31.051	Isopentyl hexanoate	0.03
31.630	Nerol	0.02
31.779	Citronellol	0.08
33.400	Unidentified	0.02
34.590	Geranial	0.02
35.747	Bornyl acetate	0.05
36.082	Thymol	0.02
36.631	Carvacrol	0.24
37.682	Unidentified	0.04
38.947	delta-Elementene	0.12
39.348	Unidentified	0.03
39.878	alpha-Terpinyl acetate	2.00
40.068	Citronellyl acetate	0.14
40.565	gamma-Terpinyl acetate	0.02
42.342	beta-Bourbonene	0.02
42.592	7-epi-Sesquithujene	0.05
42.707	beta-Elementene	0.04
43.856	alpha-Gurjunene	0.58

Chromatogram Vitex - Edens Garden



Comments:

The analysis of this Vitex batch sample meets the expected chemical profile for authentic essential oil of Vitex agnus-castus. No contamination or adulteration was detected. The results provided in this GCMS quality analysis reflect the chemical composition of the oil and lot referenced above on the date of analysis.

R.Time	Name	Area%
44.655	trans-beta-Caryophyllene	7.38
45.099	Unidentified	0.02
45.321	Calarene	0.04
45.481	trans-alpha-Bergamotene	0.31
45.810	Aromadendrene	0.12
45.948	(Z)-beta-Farnesene	0.46
46.279	alpha-Guaiene	0.04
46.365	epi-beta-Santalene	0.02
46.726	(E)-beta-Farnesene	7.09
46.883	alpha-Humulene	0.27
47.010	Unidentified	0.03
47.160	Alloaromadendrene	1.05
47.295	Unidentified	0.01
48.265	Unidentified	0.04
48.469	Germacrene D	0.12
48.653	(Z,E)-alpha-Farnesene	0.02
49.087	Viridiflorene	0.11
49.369	Bicyclogermacrene	2.55
49.832	Unidentified	0.04
50.119	beta-Bisabolene	0.10
50.218	beta-Curcumene	0.06
50.430	Unidentified	0.13
50.728	delta-Cadinene	0.05
51.073	beta-Sesquiphellandrene	0.06
53.262	(E)-Nerolidol	0.05
53.745	Dendralasin	0.05
53.823	Unidentified	0.04
54.187	Spathulenol	0.15
54.507	Caryophyllene oxide	0.10
54.725	Globulol	0.05
55.829	Ledol	0.10
57.407	Unidentified	0.02
57.947	tau-Cadinol	0.08
60.516	alpha-Bisabolol	0.12
62.019	(2E,6E)-Farnesol	0.12
70.716	Unidentified	0.02
73.960	Unidentified	0.02
75.661	Unidentified	0.06
		100.00