

Sample Information

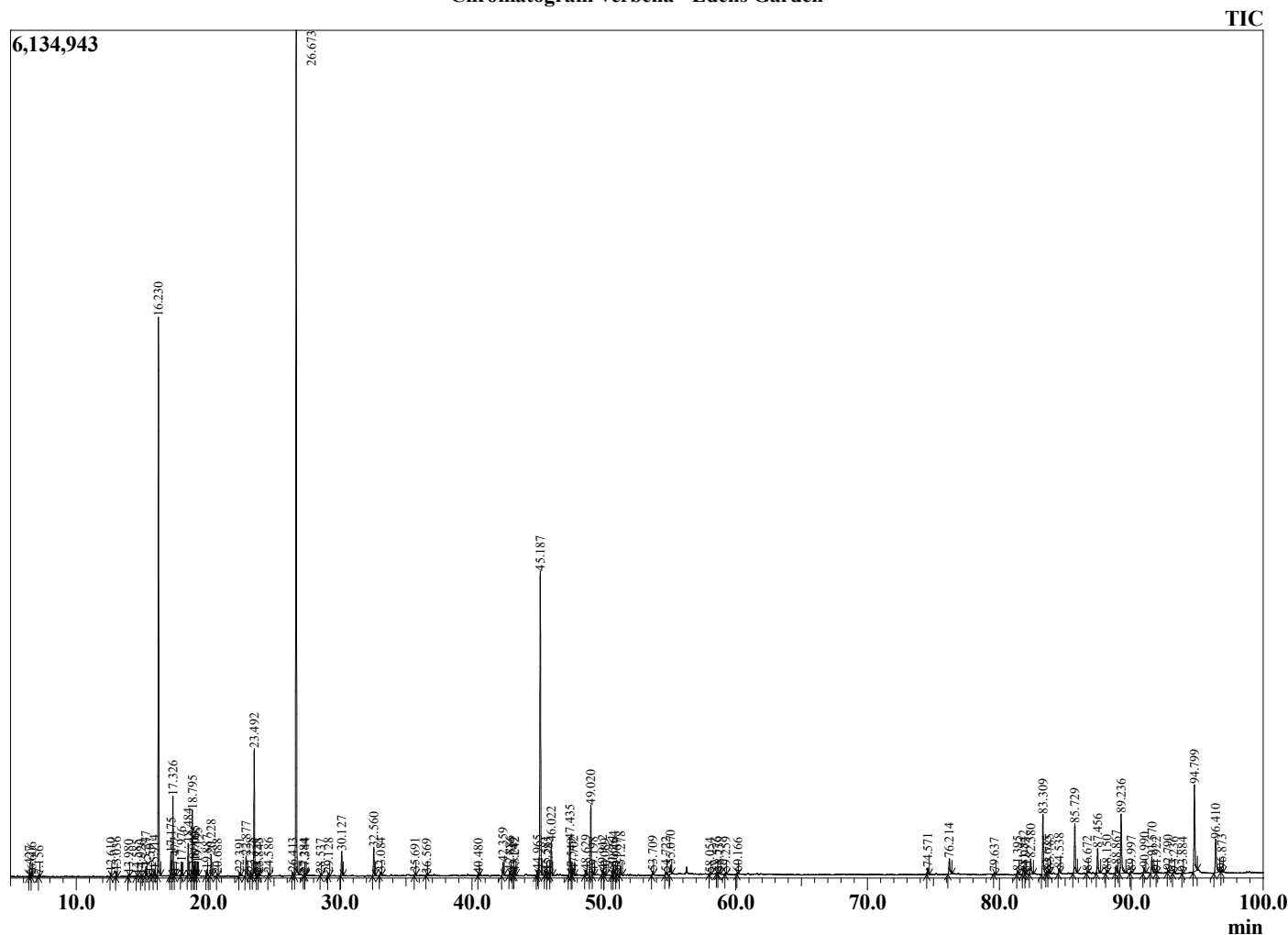
Analyzed by : Dr. Robert S. Pappas
 Analyzed : 7/28/2022 1:50:55 AM
 Sample Type : Essential Oil
 Sample Name : Verbena - Edens Garden
 Sample ID : BC18CAA
 Injection Volume : 0.10
 Instrument ID : GC-3



Peak Report TIC

R.Time	Name	Area%
6.427	Unidentified	0.03
6.606	Unidentified	0.10
7.156	Octane	0.04
12.610	alpha-Thujene	0.10
13.036	alpha-Pinene	0.13
13.980	Camphene	0.05
14.585	Benzaldehyde	0.03
14.920	Unidentified	0.03
15.277	Sabinene	0.27
15.597	beta-Pinene	0.09
15.914	Camphene isomer	0.20
16.230	Myrcene	15.53
17.175	Pseudolimonene	0.67
17.326	alpha-Phellandrene	2.30
17.477	delta-3-Carene	0.09
17.976	Unidentified	0.47
18.484	para-Cymene	0.96
18.795	Limonene	1.92
18.904	beta-Phellandrene	0.28
19.005	1,8-Cineole	0.45
19.195	cis-beta-Ocimene	0.38
19.887	trans-beta-Ocimene	0.18
20.228	Dihydrotagetone	0.66
20.688	gamma-Terpinene	0.06
22.391	Unidentified	0.10
22.877	6,7-Epoxyterpinene	0.65
23.228	Unidentified	0.11
23.492	Linalool	4.14
23.728	2-Methylbutyl-2-methylbutyrate	0.06
23.843	Nonanal	0.09
24.586	Unidentified	0.09
26.413	Ipsdienol	0.12
26.673	Myrcenone	27.08
27.284	Pinocamphone	0.05
27.344	Unidentified	0.06
28.537	Borneol	0.05
29.128	Unidentified	0.10
30.127	alpha-Terpineol	0.82
32.560	(Z)-Ocimenone	0.97
33.084	(E)-Ocimenone	0.14
35.691	Myrcenone isomer	0.09
36.569	Unidentified	0.05
40.480	alpha-Cubebene	0.04
42.359	alpha-Copaene	0.49
42.886	beta-Bourbonene	0.15
43.149	beta-Cubebene	0.06
43.242	beta-Elementene	0.12
44.965	alpha-Cedrene	0.21
45.187	beta-Caryophyllene	11.28
45.581	Unidentified	0.16
45.785	gamma-Elementene	0.17
46.022	trans-alpha-Bergamotene	1.23
47.435	alpha-Humulene	1.35
47.549	Unidentified	0.03
47.702	Alloaromadendrene	0.19
48.629	trans-Cadina-1(6),4-diene	0.19
49.020	Germacrene D	2.71
49.198	Unidentified	0.13
49.912	Bicyclogermacrene	0.22
50.089	alpha-Murolene	0.07
50.661	beta-Bisabolene	0.20
50.764	beta-Curcumene	0.41

Chromatogram Verbena - Edens Garden



Comments:

The analysis of this Verbena batch sample meets the expected chemical profile for authentic essential oil of Lippia javanica.

No contamination or adulteration was detected. The results provided in this GCMS quality analysis reflect the chemical composition of the oil and lot referenced above on the date of analysis.

©Copyright 2022 by Essential Oil University. All rights reserved. Any publishing, copying, use, dissemination, or distribution of this report, including online, without the express written permission of Essential Oil University is strictly prohibited.

R.Time	Name	Area%
50.967	gamma-Cadinene	0.06
51.278	delta-Cadinene	0.35
53.709	Germacrene B	0.15
54.722	Unidentified	0.15
55.070	Caryophyllene oxide	0.38
58.054	Unidentified	0.05
58.576	Unidentified	0.05
58.759	delta-Cadinol	0.12
59.259	alpha-Cadinol	0.08
60.166	Unidentified	0.07
74.571	Myrcene dimer I	0.27
76.214	Unidentified	0.78
79.637	Unidentified	0.07
81.395	Unidentified	0.15
81.842	Unidentified	0.38
81.972	Unidentified	0.08
82.380	Unidentified	0.73
83.309	Unidentified	2.62
83.625	Unidentified	0.06
83.785	Unidentified	0.17
84.538	Unidentified	0.19
85.729	Unidentified	2.20
86.672	Unidentified	0.09
87.456	Unidentified	1.14
88.150	Unidentified	0.10
88.867	Unidentified	0.37
89.236	Unidentified	2.78
89.997	Unidentified	0.09
90.990	Unidentified	0.26
91.570	Unidentified	0.77
91.922	Unidentified	0.06
92.790	Unidentified	0.07
93.236	Unidentified	0.06
93.884	Unidentified	0.06
94.799	Unidentified	3.97
96.410	Unidentified	1.69
96.873	Unidentified	0.09
		100.00