

Sample Information

Analyzed by : Dr. Robert S. Pappas  
 Analyzed : 7/20/2018 1:38:41 AM  
 Sample Type : Essential Oil  
 Sample Name : Turmeric - Edens Garden  
 Sample ID : AH06GP  
 Injection Volume : 0.10  
 Instrument ID : GC-2

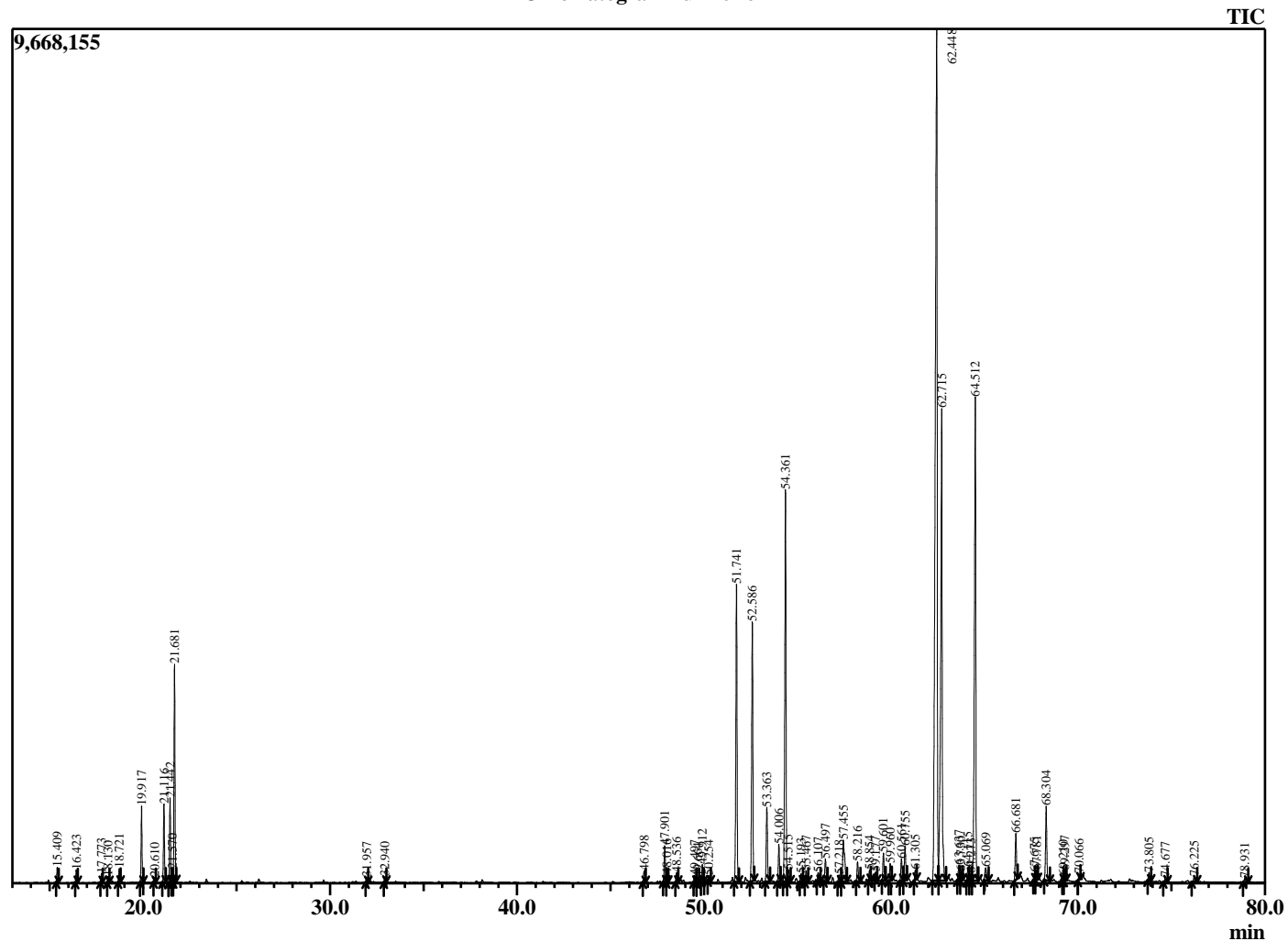


Peak Report TIC

| R.Time | Name                             | Area%  |
|--------|----------------------------------|--------|
| 15.409 | alpha-Pinene                     | 0.23   |
| 16.423 | Camphene                         | 0.19   |
| 17.773 | Sabinene                         | 0.14   |
| 18.130 | beta-Pinene                      | 0.10   |
| 18.721 | Myrcene                          | 0.22   |
| 19.917 | alpha-Phellandrene               | 1.27   |
| 20.610 | alpha-Terpinene                  | 0.07   |
| 21.116 | para-Cymene                      | 1.35   |
| 21.442 | Limonene                         | 1.48   |
| 21.570 | beta-Phellandrene                | 0.22   |
| 21.681 | 1,8-Cineole                      | 3.77   |
| 31.957 | Terpinen-4-ol                    | 0.08   |
| 32.940 | alpha-Terpineol                  | 0.10   |
| 46.798 | 7-epi-Sesquithujene              | 0.23   |
| 47.901 | alpha-Santalene                  | 0.76   |
| 48.016 | beta-Caryophyllene               | 0.14   |
| 48.536 | gamma-Elemene                    | 0.18   |
| 49.497 | Turmeric unidentified            | 0.15   |
| 49.664 | epi-beta-Santalene               | 0.09   |
| 49.912 | E-beta-Farnesene                 | 0.35   |
| 50.254 | alpha-Humulene                   | 0.12   |
| 51.741 | Ar-Curcumene                     | 6.41   |
| 52.586 | alpha-Zingiberene                | 5.40   |
| 53.363 | beta-Bisabolene                  | 1.67   |
| 54.006 | Turmeric unidentified            | 0.77   |
| 54.361 | beta-Sesquiphellandrene          | 8.74   |
| 54.515 | E-gamma-Bisabolene               | 0.30   |
| 55.193 | Sesquiterpene                    | 0.16   |
| 55.467 | Selina-3,7(11)-diene             | 0.25   |
| 56.107 | 7-epi-cis-sesquisabinene hydrate | 0.22   |
| 56.497 | Germacrene B                     | 0.51   |
| 57.218 | Turmeric unidentified            | 0.18   |
| 57.455 | Turmeric unidentified            | 1.44   |
| 58.216 | Turmeric unidentified            | 0.47   |
| 58.854 | Turmeric unidentified            | 0.23   |
| 59.177 | Turmeric unidentified            | 0.11   |
| 59.601 | Turmeric unidentified            | 0.58   |
| 59.960 | Helifolen-12-al <anti-syn-syn>   | 0.35   |
| 60.561 | 7-epi-cis-sesquisabinene hydrate | 0.47   |
| 60.755 | Turmeric unidentified            | 0.75   |
| 61.305 | Turmeric unidentified            | 0.21   |
| 62.448 | Ar-Turmerone                     | 29.07  |
| 62.715 | Turmerone                        | 13.20  |
| 63.637 | Turmeric unidentified            | 0.42   |
| 63.730 | Turmeric unidentified            | 0.15   |
| 64.115 | Turmeric unidentified            | 0.29   |
| 64.273 | Turmeric unidentified            | 0.18   |
| 64.512 | Curlone                          | 11.99  |
| 65.069 | Z-alpha-Atlantone                | 0.36   |
| 66.681 | Turmeric unidentified            | 0.98   |
| 67.675 | Turmeric unidentified            | 0.14   |
| 67.781 | Turmeric unidentified            | 0.19   |
| 68.304 | E-alpha-Atlantone                | 1.67   |
| 69.210 | Himalchalol <allo>               | 0.09   |
| 69.297 | Turmeric unidentified            | 0.20   |
| 70.066 | Turmeric unidentified            | 0.11   |
| 73.805 | Turmeric unidentified            | 0.17   |
| 74.677 | Turmeric unidentified            | 0.12   |
| 76.225 | Turmeric unidentified            | 0.13   |
| 78.931 | Turmeric unidentified            | 0.11   |
|        |                                  | 100.00 |

This report is not valid 1 year after the report date.

Chromatogram Turmeric



Comments:  
 The analysis of this Turmeric batch sample meets the expected chemical profile for authentic essential oil of Curcuma longa. No contamination or adulteration was detected.