

Sample Information

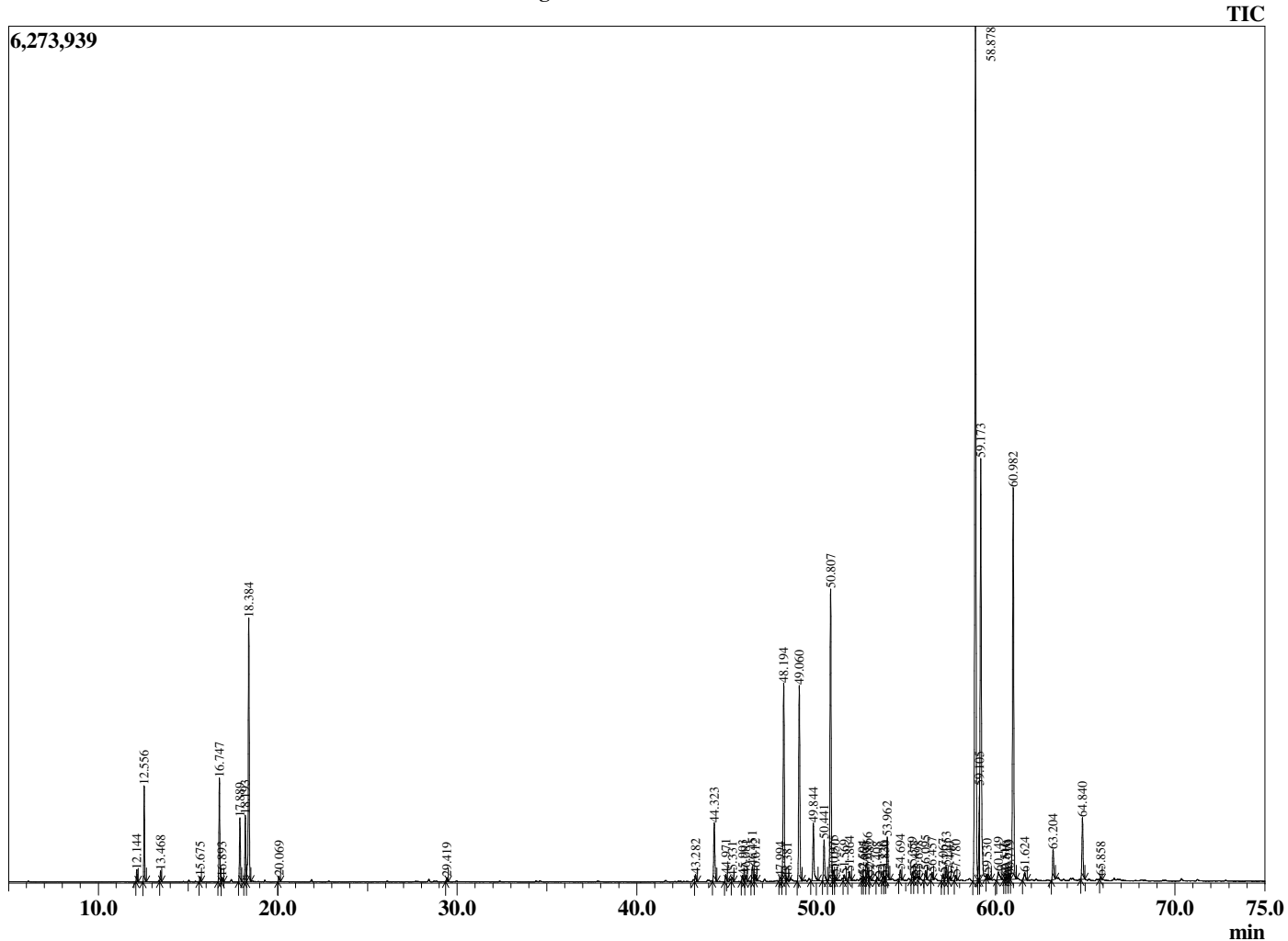
Analyzed by : Dr. Robert S. Pappas  
 Analyzed : 7/11/2020 1:09:26 AM  
 Sample Type : Essential Oil  
 Sample Name : Turmeric - Edens Garden  
 Sample ID : BA18FBA  
 Injection Volume : 0.10  
 Instrument ID : GC-4



Peak Report TIC

R.Time	Name	Area%
12.144	alpha-Thujene	0.23
12.556	alpha-Pinene	1.80
13.468	Camphene	0.21
15.675	Myrcene	0.10
16.747	alpha-Phellandrene	2.21
16.893	delta-3-Carene	0.10
17.889	para-Cymene	1.42
18.193	Limonene	1.46
18.384	1,8-cineole	6.24
20.069	gamma-Terpinene	0.13
29.419	alpha-Terpineol	0.10
43.282	7-epi-Sesquithujene	0.19
44.323	alpha-Santalene	1.70
44.971	gamma-Elemene	0.19
45.331	Unidentified	0.12
45.903	Unidentified	0.17
46.081	epi-beta-Santalene	0.19
46.451	trans-beta-Farnesene	0.45
46.612	alpha-Humulene	0.21
47.994	Italicene	0.10
48.194	Ar-Curcumene	5.51
48.381	Unidentified	0.08
49.060	alpha-Zingiberene	5.53
49.844	beta-Bisabolene	1.77
50.441	alpha-Teresantalic acid	1.17
50.807	beta-Sesquiphellandrene	8.15
50.975	trans-gamma-Bisabolene	0.31
51.050	Unidentified	0.11
51.569	Eremophilene isomer	0.18
51.864	Selina-3,7(11)-diene	0.27
52.594	Unidentified	0.14
52.665	Unidentified	0.10
52.866	Germacrene B	0.38
52.982	Unidentified	0.12
53.408	Unidentified	0.09
53.726	Unidentified	0.09
53.830	Unidentified	0.10
53.962	Unidentified	1.31
54.694	Unidentified	0.31
55.359	Unidentified	0.22
55.477	Unidentified	0.09
55.698	Spathulenol	0.07
56.095	Unidentified	0.27
56.457	anti-syn-syn-Helifolen-12-al C	0.20
57.067	Unidentified	0.22
57.253	Unidentified	0.46
57.440	Unidentified	0.11
57.780	Unidentified	0.16
58.878	Ar-turmerone	25.24
59.105	allo-Himachalol	1.51
59.173	Turmerone	13.23
59.530	Unidentified	0.11
60.149	Unidentified	0.39
60.516	Unidentified	0.08
60.610	Unidentified	0.10
60.779	Unidentified	0.12
60.982	Curlone	11.41
61.624	Curcuphenol	0.28
63.204	Unidentified	0.89
64.840	(E)-alpha-Atlantone	1.74
65.858	Unidentified	0.07
		100.00

Chromatogram Turmeric - Edens Garden



Comments:

The analysis of this Turmeric batch sample meets the expected chemical profile for authentic essential oil of *Curcuma longa*. No contamination or adulteration was detected. The results provided in this GCMS quality analysis reflect the chemical composition of the oil and lot referenced above on the date of analysis.