

Sample Information

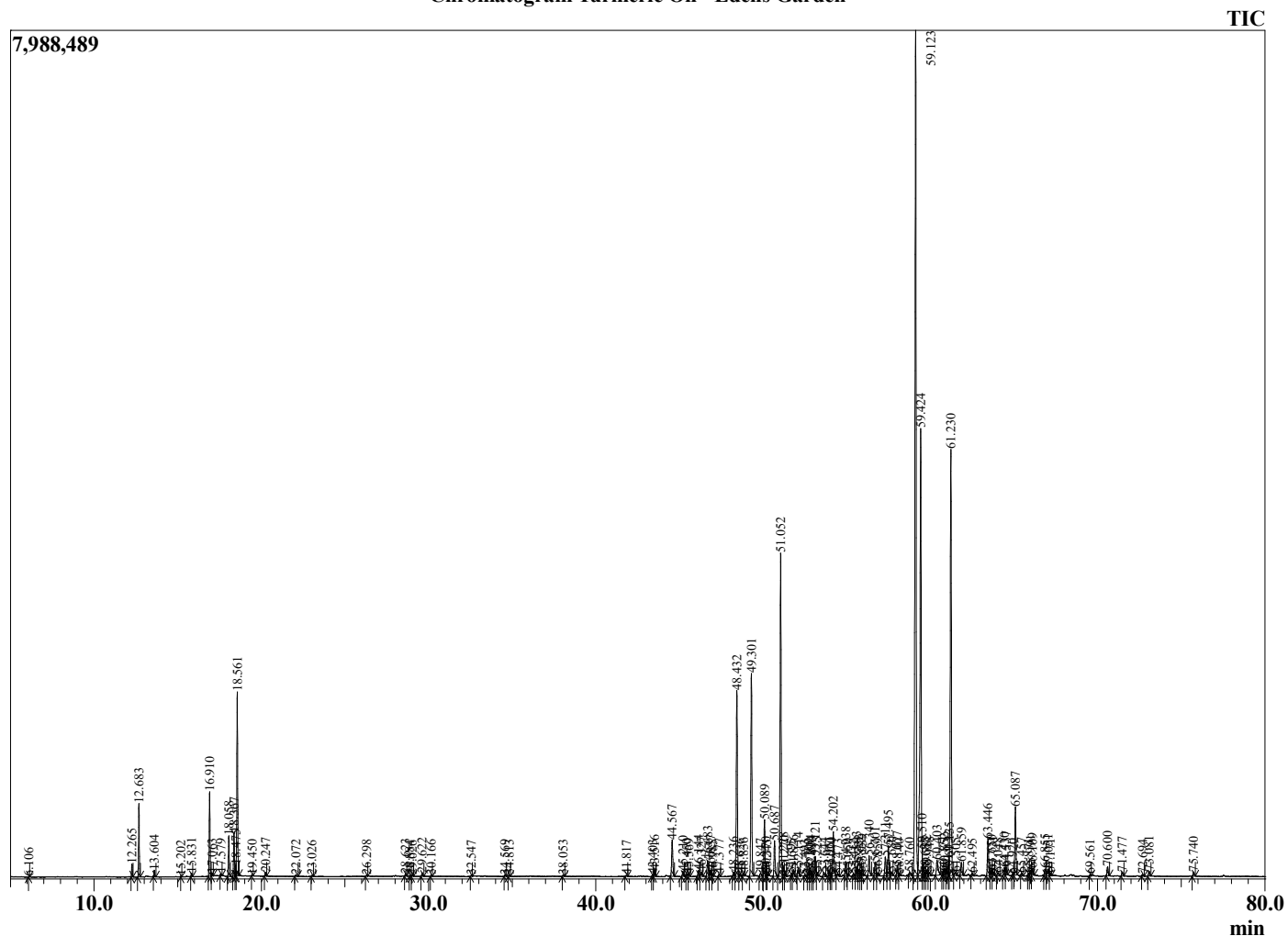
Analyzed by : Dr. Robert S. Pappas  
 Analyzed : 7/29/2022 9:01:22 PM  
 Sample Type : Essential Oil  
 Sample Name : Turmeric Oil - Edens Garden  
 Sample ID : EG Lot #BB11GBD  
 Injection Volume : 0.10  
 Instrument ID : GC-3



Peak Report TIC

R.Time	Name	Area%
6.106	Toluene	0.01
12.265	alpha-Thujene	0.22
12.683	alpha-Pinene	1.31
13.604	Camphene	0.12
15.202	Sabinene	0.02
15.831	Myrcene	0.07
16.910	alpha-Phellandrene	1.68
17.063	delta-3-Carene	0.05
17.579	alpha-Terpinene	0.04
18.058	para-Cymene	0.83
18.367	Limonene	0.90
18.475	beta-Phellandrene	0.18
18.561	1,8-Cineole	3.87
19.450	(E)-beta-Ocimene	0.02
20.247	gamma-Terpinene	0.07
22.072	Terpinolene	0.04
23.026	Linalool	0.02
26.298	Camphor	0.03
28.623	Terpinen-4-ol	0.04
28.884	4'-methyl-Acetophenone	0.02
29.026	Unidentified	0.02
29.622	alpha-Terpineol	0.09
30.166	alpha-Phellandrene epoxide	0.03
32.547	Neral	0.02
34.569	Geranial	0.04
34.813	Unidentified	0.04
38.053	Unidentified	0.03
41.817	Unidentified	0.03
43.403	Unidentified	0.04
43.516	alpha-Funebrene	0.17
44.567	alpha-Santalene	1.05
45.210	gamma-Elemene	0.12
45.450	trans-alpha-Bergamotene	0.06
45.569	Unidentified	0.06
46.144	(Z)-beta-Farnesene	0.15
46.327	epi-beta-Santalene	0.13
46.683	(E)-beta-Farnesene	0.45
46.857	alpha-Humulene	0.18
46.985	Amorpha-4,11-diene	0.04
47.377	alpha-Acoradiene	0.06
48.236	gamma-Curcumene	0.09
48.432	Ar-Curcumene	4.92
48.626	(Z,E)-alpha-Farnesene	0.07
48.836	Unidentified	0.08
49.301	alpha-Zingiberene	5.28
49.847	beta-Curcumene	0.11
50.089	beta-Bisabolene	1.51
50.170	Unidentified	0.09
50.245	Unidentified	0.03
50.687	Unidentified	0.99
51.052	beta-Sesquiphellandrene	8.31
51.228	(E)-gamma-Bisabolene	0.24
51.270	Unidentified	0.11
51.695	Unidentified	0.06
51.826	Selina-4(15),7(11)-diene	0.17
52.114	Selina-3,7(11)-diene	0.25
52.493	Unidentified	0.03
52.709	Unidentified	0.06
52.834	Unidentified	0.19
52.890	Unidentified	0.07
53.121	Germacrene B	0.56
53.225	Unidentified	0.09

Chromatogram Turmeric Oil - Edens Garden



Comments:

The analysis of this Turmeric Oil batch sample meets the expected chemical profile for authentic essential oil of *Curcuma longa*.

No contamination or adulteration was detected. The results provided in this GCMS quality analysis reflect the chemical composition of the oil and lot referenced above on the date of analysis.

©Copyright 2022 by Essential Oil University. All rights reserved. Any publishing, copying, use, dissemination, or distribution of this report, including online, without the express written permission of Essential Oil University is strictly prohibited.

R.Time	Name	Area%
53.644	Unidentified	0.11
53.961	Unidentified	0.12
54.070	Unidentified	0.09
54.202	alpha-Dihydrocurcumene	1.35
54.473	Caryophyllene oxide	0.08
54.938	Unidentified	0.43
55.050	Unidentified	0.03
55.412	Unidentified	0.05
55.593	Unidentified	0.24
55.722	Unidentified	0.18
55.852	Unidentified	0.11
55.939	Unidentified	0.20
56.340	cis-Zingiberenol	0.58
56.701	anti-syn-Helifolen-12-al C	0.38
56.859	Unidentified	0.09
57.311	trans-Zingiberenol	0.54
57.495	Unidentified	0.87
57.680	Unidentified	0.12
58.027	Unidentified	0.27
58.140	Unidentified	0.04
58.760	Unidentified	0.10
59.123	Ar-Tumerone	25.00
59.424	Unidentified + Tumerone	13.63
59.510	beta-Bisabolol	0.42
59.685	Unidentified	0.11
59.782	Unidentified	0.16
59.948	Bergamotal	0.11
60.403	Unidentified	0.60
60.771	Germacrone	0.09
60.852	Unidentified	0.20
61.032	Unidentified	0.25
61.135	Unidentified	0.24
61.230	Curlone	11.69
61.505	Unidentified	0.10
61.859	(Z)-alpha-Atlantone	0.38
62.495	(Z)-Nuciferol	0.06
63.446	Unidentified	1.02
63.650	Unidentified	0.15
63.731	Unidentified	0.12
64.048	Unidentified	0.10
64.430	Unidentified	0.21
64.537	Unidentified	0.23
64.920	Unidentified	0.06
65.087	(E)-alpha-Atlantone	1.82
65.457	Unidentified	0.06
65.871	Unidentified	0.05
65.991	Unidentified	0.14
66.109	Unidentified	0.19
66.855	Unidentified	0.18
67.051	Unidentified	0.25
67.171	Unidentified	0.06
69.561	Unidentified	0.03
70.600	Unidentified	0.24
71.477	Unidentified	0.11
72.694	Unidentified	0.04
73.081	Unidentified	0.13
75.740	Unidentified	0.12
		100.00