

Sample Information

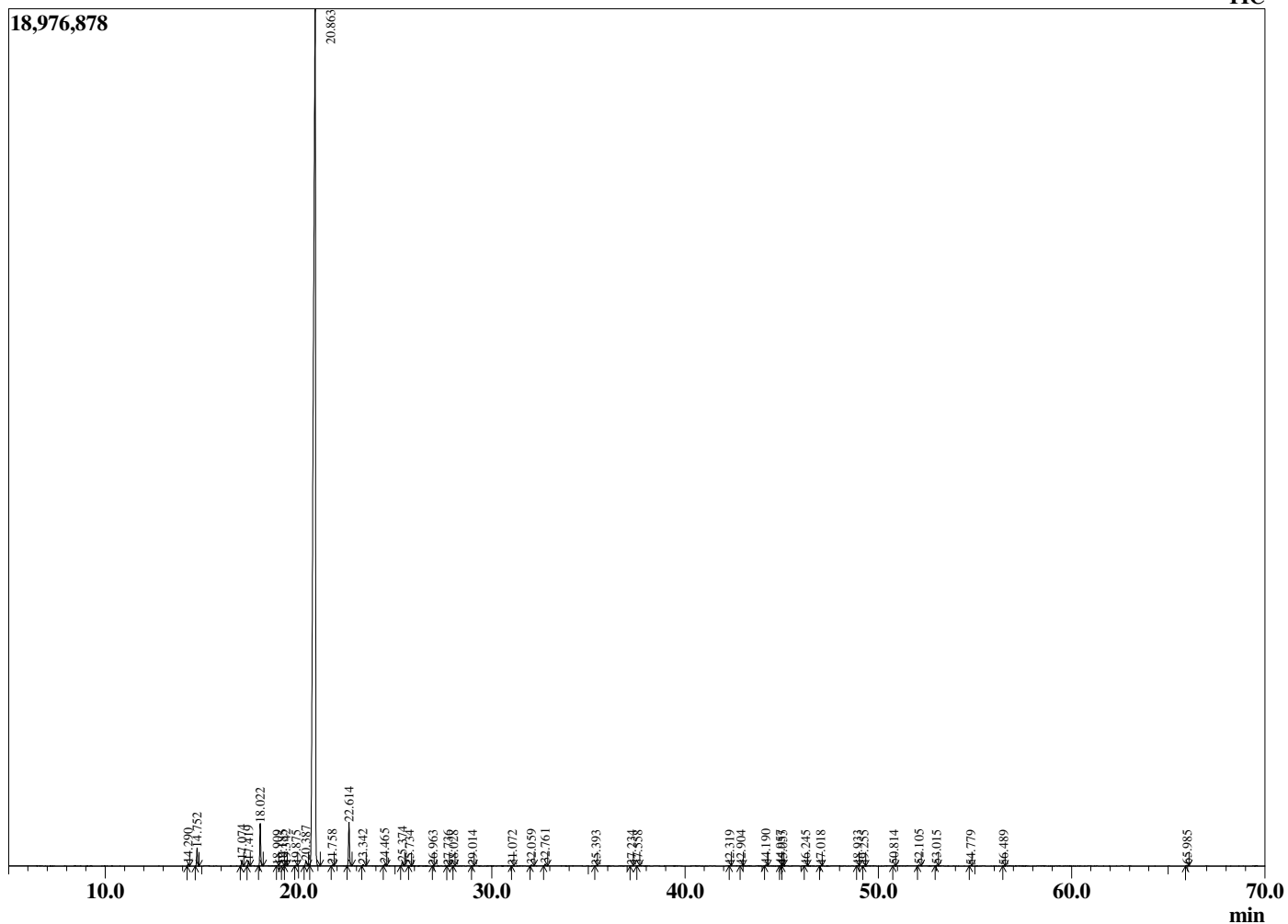
Analyzed by : Dr. Robert S. Pappas
 Analyzed : 3/6/2021 9:02:09 PM
 Sample Type : Essential Oil
 Sample Name : Tangerine - Edens Garden
 Sample ID : BB22AAC
 Injection Volume : 0.10
 Instrument ID : GC-2



Peak Report TIC

R.Time	Name	Area%
14.290	alpha-Thujene	0.09
14.752	alpha-Pinene	0.77
17.074	Sabinene	0.27
17.419	beta-Pinene	0.22
18.022	Myrcene	1.94
18.909	Octanal	0.02
19.185	alpha-Phellandrene	0.03
19.342	delta-3-Carene	0.04
19.875	alpha-Terpinene	0.04
20.387	para-Cymene	0.32
20.863	Limonene	92.98
21.758	(E)-beta-Ocimene	0.05
22.614	gamma-Terpinene	2.13
23.342	Octanol	0.07
24.465	Terpinolene	0.10
25.374	Linalool	0.22
25.734	Nonanal	0.01
26.963	trans-para-Mentha-2,8-dien-1-ol	0.00
27.736	cis-Limonene oxide	0.02
28.028	trans-Limonene oxide	0.01
29.014	Citronellal	0.02
31.072	Terpinen-4-ol	0.01
32.059	alpha-Terpineol	0.07
32.761	Decanal	0.10
35.393	Carvone	0.02
37.234	Decanol	0.01
37.558	Perillaldehyde	0.02
42.319	Citronellyl acetate	0.01
42.904	Neryl acetate	0.02
44.190	alpha-Copaene	0.06
44.957	trans-Muurolo-4(14),5-diene	0.03
45.055	beta-Elemene	0.02
46.245	Dodecanal	0.03
47.018	trans-beta-Caryophyllene	0.02
48.933	(E)-beta-Farnesene	0.02
49.255	alpha-Humulene	0.01
50.814	Germacrene D	0.03
52.105	(E,E)-alpha-Farnesene	0.06
53.015	delta-Cadinene	0.04
54.779	alpha-Elemol	0.02
56.489	Unidentified	0.01
65.985	alpha-Sinensal	0.05
		100.00

Chromatogram Tangerine - Edens Garden



Comments:

The analysis of this Tangerine batch sample meets the expected chemical profile for authentic essential oil of *Citrus reticulata*. No contamination or adulteration was detected. The results provided in this GCMS quality analysis reflect the chemical composition of the oil and lot referenced above on the date of analysis.