

Sample Information

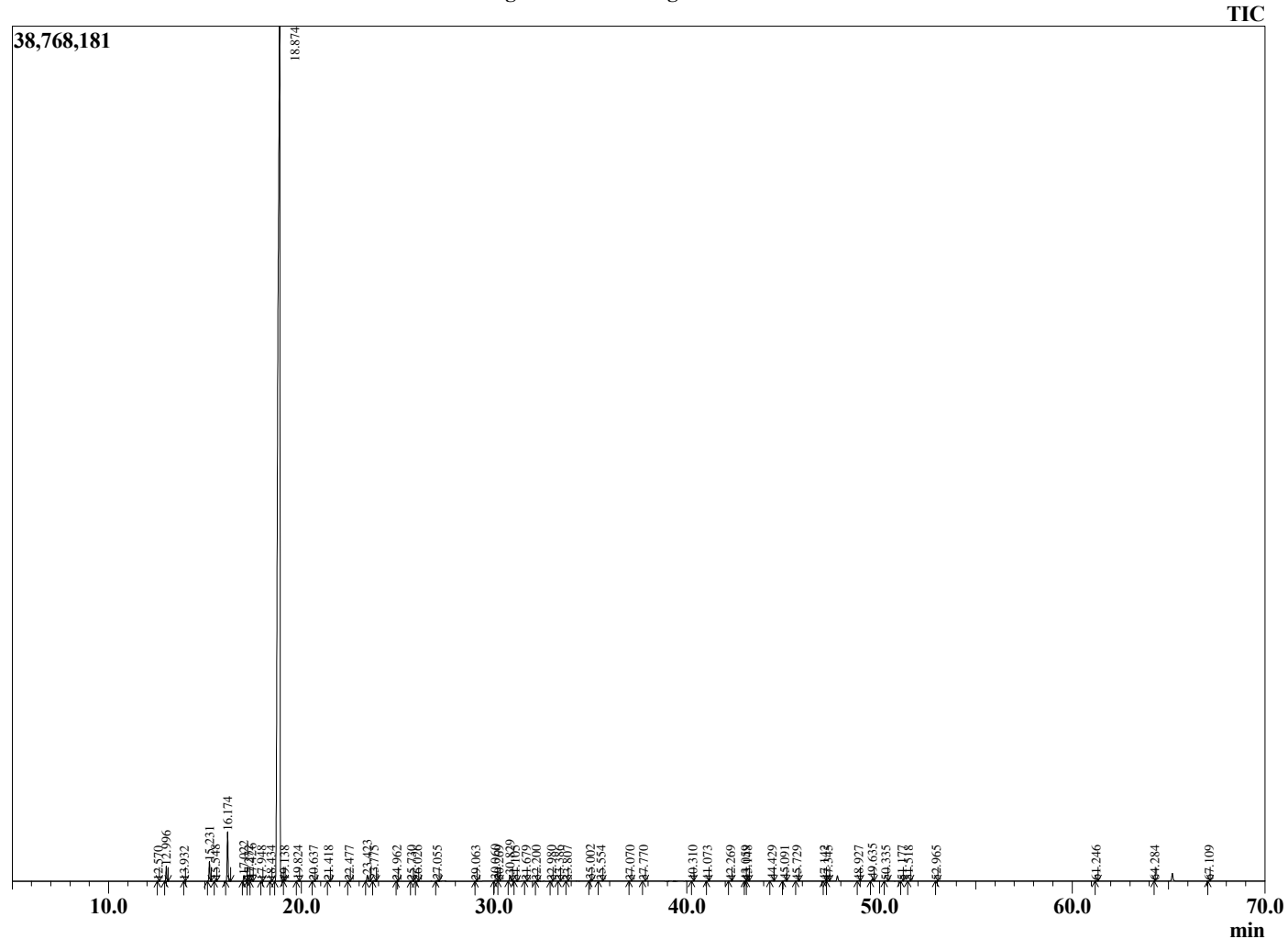
Analyzed by : Dr. Robert S. Pappas
 Analyzed : 11/26/2020 12:07:53 AM
 Sample Type : Essential Oil
 Sample Name : Sweet Orange Oil - Eden's Garden
 Sample ID : BA29IAQ
 Injection Volume : 0.10
 Instrument ID : GC-3



Peak Report TIC

R.Time	Name	Area%
12.570	alpha-Thujene	0.01
12.996	alpha-Pinene	0.67
13.932	Camphene	0.00
15.231	Sabinene	0.92
15.548	beta-Pinene	0.05
16.174	Myrcene	2.39
17.022	Octanal	0.28
17.272	alpha-Phellandrene	0.05
17.426	delta-3-Carene	0.10
17.948	Unidentified	0.00
18.434	Unidentified	0.01
18.874	Limonene	93.87
19.138	(Z)-beta-Ocimene	0.00
19.824	(E)-beta-Ocimene	0.05
20.637	gamma-Terpinene	0.01
21.418	Octanol	0.03
22.477	Terpinolene	0.02
23.423	Linalool	0.32
23.775	Nonanal	0.04
24.962	cis-para-Mentha-2,8-dien-1-ol	0.01
25.730	cis-Limonene oxide	0.01
26.026	trans-Limonene oxide	0.02
27.055	Citronellal	0.05
29.063	Terpinen-4-ol	0.00
30.060	alpha-Terpineol	0.06
30.269	Unidentified	0.00
30.829	Decanal	0.33
31.105	Octyl acetate	0.03
31.679	Unidentified	0.01
32.200	Citronellol	0.01
32.980	Neral	0.03
33.386	Carvone	0.02
33.807	Unidentified	0.01
35.002	Geranial	0.07
35.554	Perillaldehyde	0.03
37.070	Unidentified	0.01
37.770	Undecenal	0.01
40.310	alpha-Terpinyl acetate	0.01
41.073	Neryl acetate	0.01
42.269	alpha-Copaene	0.02
43.059	beta-Cubebene	0.01
43.148	beta-Elementene	0.02
44.429	Dodecanal	0.06
45.091	trans-beta-Caryophyllene	0.06
45.729	beta-Copaene	0.03
47.142	(E)-beta-Farnesene	0.02
47.345	alpha-Humulene	0.01
48.927	Germacrene D	0.02
49.635	Valencene	0.13
50.335	(E,E)-alpha-Farnesene	0.02
51.177	delta-Cadinene	0.03
51.518	beta-Sesquiphellandrene	0.01
52.965	Elemol	0.01
61.246	beta-Sinensal	0.01
64.284	alpha-Sinensal	0.01
67.109	Nootkatone	0.01
		100.00

Chromatogram Sweet Orange Oil-Eden's Garden



Comments:

The analysis of this Sweet Orange batch sample meets the expected chemical profile for authentic essential oil of *Citrus sinensis*. No contamination or adulteration was detected. The results provided in this GCMS quality analysis reflect the chemical composition of the oil and lot referenced above on the date of analysis.