

Sample Information

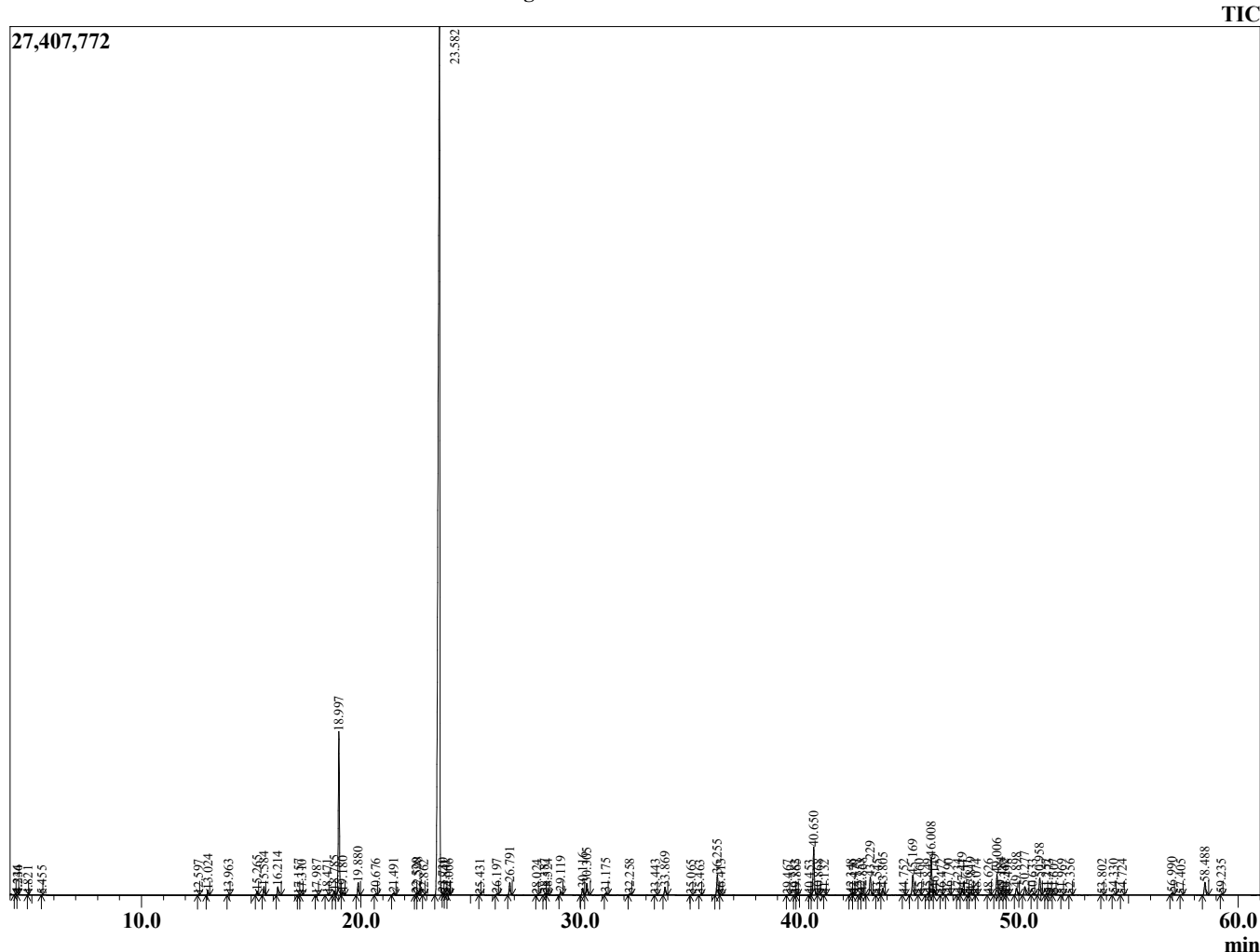
Analyzed by : Dr. Robert S. Pappas  
 Analyzed : 6/14/2021 6:45:21 AM  
 Sample Type : Essential Oil  
 Sample Name : Sweet Basil - Eden's Garden  
 Sample ID : BB12GC  
 Injection Volume : 0.10  
 Instrument ID : GC-3



Peak Report TIC

R.Time	Name	Area%
4.234	3-Methylbutanal	0.01
4.346	2-Methylbutanal	0.01
4.821	2-Ethylfuran	0.00
5.455	1-Pentanol	0.00
12.597	alpha-Thujene	0.01
13.024	alpha-Pinene	0.22
13.963	Camphene	0.04
15.265	Sabinene	0.19
15.584	beta-Pinene	0.42
16.214	Myrcene	0.42
17.157	Unidentified	0.02
17.310	alpha-Phellandrene	0.01
17.987	alpha-Terpinene	0.04
18.471	para-Cymene	0.05
18.785	Limonene	0.23
18.997	1,8-cineole	8.46
19.180	cis-beta-Ocimene	0.17
19.880	trans-beta-Ocimene	0.65
20.676	gamma-Terpinene	0.06
21.491	trans-Sabinene hydrate	0.13
22.520	Terpinolene	0.07
22.598	trans-Linalool oxide (furanoid)	0.15
22.862	6,7-Epoxyterpinene	0.01
23.582	Linalool	69.28
23.730	Hotrienol	0.01
23.841	Unidentified	0.01
24.006	1-Octen-3-yl acetate	0.03
25.431	allo-Ocimene	0.01
26.197	trans-Myroxide	0.06
26.791	Camphor	0.71
28.024	Menthone	0.01
28.387	delta-Terpineol	0.06
28.524	Borneol	0.06
29.119	Terpinen-4-ol	0.20
30.116	alpha-Terpineol	0.40
30.305	Estragole	0.70
31.175	Octyl acetate	0.11
32.258	Citronellol	0.06
33.443	Carvone	0.02
33.869	Geraniol	0.47
35.065	Geranial	0.01
35.463	Citronellyl formate	0.01
36.255	Bornyl acetate	1.25
36.413	Isobornyl acetate	0.03
39.467	delta-Elementene	0.02
39.782	Unidentified	0.02
39.865	Unidentified	0.02
40.453	alpha-Cubebene	0.01
40.650	Eugenol	2.88
40.868	Unidentified	0.05
41.132	Unidentified	0.01
42.348	alpha-Copaene	0.08
42.470	Geranyl acetate	0.01
42.753	Elementene isomer	0.07
42.868	beta-Bourbonene	0.12
43.229	beta-Elementene	1.21

Chromatogram Sweet Basil - Eden's Garden



Comments:

The analysis of this Basil ct. Linalool batch sample meets the expected chemical profile for authentic essential oil of *Ocimum basilicum*. No contamination or adulteration was detected. The results provided in this GCMS quality analysis reflect the chemical composition of the oil and lot referenced above on the date of analysis.

©Copyright 2021 by Essential Oil University. All rights reserved. Copying, use, dissemination, or distribution of this report, in the express written permission of Essential Oil University is

R.Time	Name	Area%
43.545	Unidentified	0.03
43.805	Methyleugenol	0.42
44.752	cis-alpha-Bergamotene	0.02
45.169	beta-Caryophyllene	1.34
45.460	beta-Cedrene	0.02
45.849	beta-Gurjunene	0.08
46.008	trans-alpha-Bergamotene	2.44
46.149	alpha-Guaiene	0.35
46.472	cis-beta-Farnesene	0.02
46.790	trans-Murrola-3,5-diene	0.08
47.234	trans-beta-Farnesene	0.04
47.419	alpha-Humulene	0.45
47.677	Unidentified	0.01
47.819	cis-Cadina-1(6),4-diene	0.18
48.074	alpha-Acoradiene	0.02
48.626	beta-Acoradiene	0.02
49.006	Germacrene D	1.33
49.184	Unidentified	0.16
49.342	10s,11s-Himachala-3(12),4-diene	0.01
49.498	beta-Selinene	0.03
49.898	Bicyclogermacrene	0.48
50.277	alpha-Bulnesene	0.56
50.633	beta-Bisabolene	0.06
50.958	gamma-Cadinene	1.07
51.257	delta-Cadinene	0.06
51.373	trans-Calamenene	0.07
51.607	beta-Sesquiphellandrene	0.07
51.969	Unidentified	0.01
52.356	alpha-Cadinene	0.02
53.802	trans-Nerolidol	0.02
54.330	Unidentified	0.05
54.724	Spathulenol	0.04
56.990	1-epi-Cubenol	0.14
57.405	Unidentified	0.01
58.488	alpha-Muurolol (=Torreyol)	0.87
59.235	Cubenol	0.03
		100.00