

Sample Information

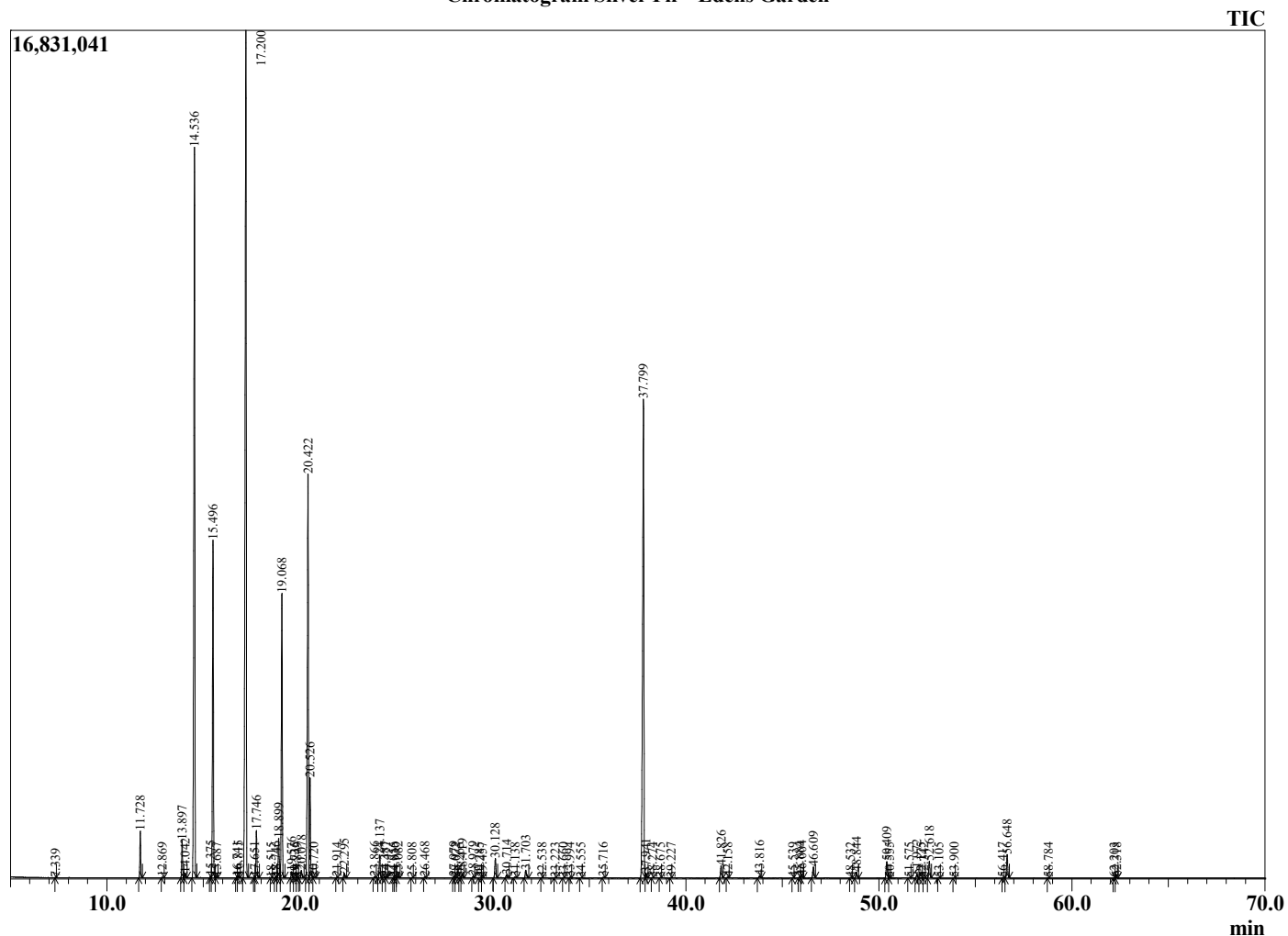
Analyzed by : Dr. Robert S. Pappas  
 Analyzed : 7/13/2022 1:36:33 PM  
 Sample Type : Essential Oil  
 Sample Name : Silver Fir - Edens Garden  
 Sample ID : BC06CW  
 Injection Volume : 0.10  
 Instrument ID : GC-2



Peak Report TIC

R.Time	Name	Area%
7.339	Toluene	0.01
11.728	Santene	0.97
12.869	Unidentified	0.01
13.897	Tricyclene	0.85
14.042	alpha-Thujene	0.10
14.536	alpha-Pinene	19.31
15.375	alpha-Fenchene	0.04
15.496	Camphene	8.02
15.687	Thuja-2,4(10)-diene	0.02
16.741	Cymene analogue	0.02
16.815	Sabinene	0.05
17.200	beta-Pinene	25.87
17.651	3-para-Menthene	0.02
17.746	Myrcene	1.12
18.515	1-para-Menthene	0.01
18.746	Pseudolimonene	0.03
18.899	alpha-Phellandrene	1.03
19.068	delta-3-Carene	7.16
19.576	alpha-Terpinene	0.15
19.735	ortho-Cymene	0.00
19.849	Unidentified	0.01
20.078	para-Cymene	0.20
20.422	Limonene	11.56
20.526	beta-Phellandrene	2.33
20.720	Unidentified	0.02
21.914	Melonal	0.01
22.295	gamma-Terpinene	0.12
23.866	Isoterpinolene	0.03
24.137	Terpinolene	0.60
24.387	Fenchone	0.02
24.477	para-Cymenene	0.02
24.855	Unidentified	0.01
24.930	alpha-Campholenal	0.01
25.082	alpha-Pinene oxide	0.04
25.808	Unidentified	0.01
26.468	alpha-Fenchol	0.02
27.979	trans-Pinocarveol	0.04
28.072	Unidentified	0.01
28.265	trans-Verbenol	0.01
28.419	Camphor	0.09
28.979	Camphene hydrate	0.04
29.285	Unidentified	0.01
29.457	Pinocarpone	0.01
30.128	Borneol	0.55
30.714	Terpinen-4-ol	0.09
31.138	para-Cymen-8-ol	0.02
31.703	alpha-Terpineol	0.24
32.538	Verbenone	0.01
33.223	alpha-Fenchyl acetate	0.01
33.660	Nerol	0.01
33.994	Thymol methyl ether	0.02
34.555	Unidentified	0.01
35.716	Piperitone	0.02
37.799	Bornyl acetate	15.86
37.941	Isobornyl acetate	0.12
38.274	Unidentified	0.01
38.675	Unidentified	0.01
39.227	Unidentified	0.01
41.826	alpha-Terpinyl acetate	0.36
42.158	alpha-Longipinene	0.02
43.816	Geranyl acetate	0.06
45.539	Sibirene	0.01

Chromatogram Silver Fir - Edens Garden



Comments:

The analysis of this Silver Fir batch sample meets the expected chemical profile for authentic essential oil of Abies alba.

No contamination or adulteration was detected. The results provided in this GCMS quality analysis reflect the chemical composition of the oil and lot referenced above on the date of analysis.

©Copyright 2022 by Essential Oil University. All rights reserved. Any publishing, copying, use, dissemination, or distribution of this report, including online, without the express written permission of Essential Oil University is strictly prohibited.

R.Time	Name	Area%
45.884	Dodecanal	0.02
46.004	Longifolene	0.07
46.609	beta-Caryophyllene	0.33
48.532	Unidentified	0.01
48.844	alpha-Humulene	0.18
50.409	Germacrene D	0.51
50.555	Alloaromadendrene	0.01
51.575	beta-Himachalene	0.01
51.972	beta-Bisabolene	0.10
52.175	cis-gamma-Bisabolene	0.01
52.342	gamma-Cadinene	0.01
52.618	delta-Cadinene	0.51
53.105	trans-gamma-Bisabolene	0.01
53.900	trans-alpha-Bisabolene	0.01
56.417	Caryophyllene oxide	0.01
56.648	Globulol	0.73
58.784	Unidentified	0.01
62.203	epi-alpha-Bisabolol	0.01
62.318	alpha-Bisabolol	0.03
		100.00