

Sample Information

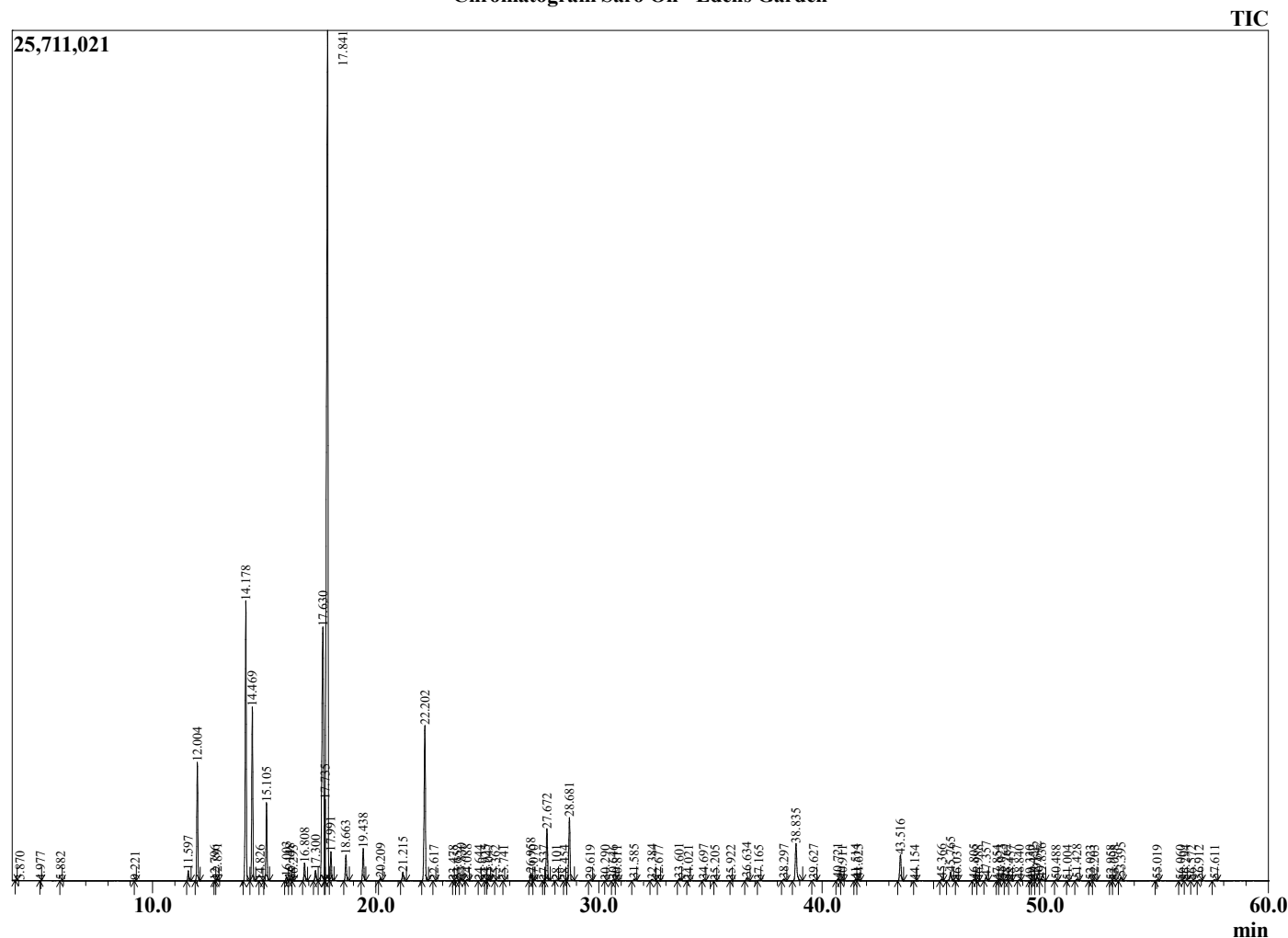
Analyzed by : Dr. Robert S. Pappas
 Analyzed : 7/29/2022 5:03:34 PM
 Sample Type : Essential Oil
 Sample Name : Saro Oil - Edens Garden
 Sample ID : EG Lot #BB13GBA
 Injection Volume : 0.10
 Instrument ID : GC-2



Peak Report TIC

R.Time	Name	Area%
3.870	3-Methylbutanal	0.00
4.977	Isoamyl alcohol	0.00
5.882	Methyl isovalerate	0.00
9.221	Isoamyl acetate	0.00
11.597	alpha-Thujene	0.31
12.004	alpha-Pinene	3.70
12.796	alpha-Fenchene	0.01
12.891	Camphene	0.07
14.178	Sabinene	9.47
14.469	beta-Pinene	5.78
14.826	6-Methyl hept-5-en-2-one	0.02
15.105	Myrcene	2.54
16.003	Pseudolimonene	0.14
16.148	alpha-Phellandrene	0.07
16.293	delta-3-Carene	0.01
16.808	alpha-Terpinene	0.62
17.300	para-Cymene	0.40
17.630	Limonene	13.57
17.735	beta-Phellandrene	1.38
17.841	1,8-Cineole	41.40
17.991	cis-beta-Ocimene	1.00
18.663	trans-beta-Ocimene	0.89
19.438	gamma-Terpinene	1.16
20.209	trans-Sabinene hydrate	0.09
21.215	Terpinolene	0.34
22.202	Linalool	6.18
22.617	Isoamyl isovalerate	0.01
23.478	alpha-Fenchol	0.00
23.652	trans-para-Mentha-2,8-dienol	0.01
23.830	cis-para-Menth-2-en-1-ol	0.08
24.088	allo-Ocimene	0.04
24.644	Unidentified	0.01
24.925	trans-Pinocarveol	0.01
25.047	trans-para-Menth-2-en-1-ol	0.05
25.362	Camphor	0.00
25.741	Citronellal	0.00
26.958	delta-Terpineol	0.29
27.070	Borneol	0.01
27.537	Unidentified	0.01
27.672	Terpinen-4-ol	2.09
28.101	Cryptone	0.02
28.454	Unidentified	0.00
28.681	alpha-Terpineol	2.56
29.619	cis-Piperitol	0.03
30.290	trans-Carveol	0.00
30.646	Nerol	0.03
30.811	Citronellol	0.02
31.585	Neral	0.07
32.384	Linalyl acetate	0.07
32.677	Unidentified	0.01
33.601	Geranial	0.09
34.021	cis-Ascaridole glycol	0.02
34.697	Bornyl acetate	0.04
35.205	trans-Ascaridole glycol	0.01
35.922	Unidentified	0.00
36.634	delta-Terpinyl acetate	0.13
37.165	Unidentified	0.03
38.297	Unidentified	0.08
38.835	alpha-Terpinyl acetate	1.82
39.627	Neryl acetate	0.04
40.721	alpha-Copaene	0.08
40.911	Geranyl acetate	0.04

Chromatogram Saro Oil - Edens Garden



Comments:

The analysis of this Saro Oil batch sample meets the expected chemical profile for authentic essential oil of Cinnamosma fragrans.

No contamination or adulteration was detected. The results provided in this GCMS quality analysis reflect the chemical composition of the oil and lot referenced above on the date of analysis.

©Copyright 2022 by Essential Oil University. All rights reserved. Any publishing, copying, use, dissemination, or distribution of this report, including online, without the express written permission of Essential Oil University is strictly prohibited.

R.Time	Name	Area%
41.514	beta-Cubebene	0.05
41.623	beta-Elemene	0.07
43.516	beta-Caryophyllene	1.15
44.154	beta-Copaene	0.01
45.366	Cadina-3,5-diene	0.07
45.765	alpha-Humulene	0.41
46.037	Alloaromadendrene	0.01
46.805	10-beta-H-Cadina-1(6),4-diene	0.05
46.988	trans-Cadina-1(6),4-diene	0.01
47.357	Germacrene D	0.16
47.854	beta-Selinene	0.01
48.023	trans-Muurolo-4(14),5-diene	0.08
48.262	epi-Cubebol	0.05
48.457	alpha-Muuroloene	0.02
48.840	(E,E)-alpha-Farnesene	0.03
49.330	gamma-Cadinene	0.01
49.452	Cubebol	0.03
49.642	delta-Cadinene	0.19
49.836	trans-Calamenene	0.12
50.488	trans-Cadina-1,4-diene	0.03
51.004	alpha-Calacorene	0.00
51.428	Elemol	0.07
52.023	Germacrene B	0.01
52.203	(E)-Nerolidol	0.03
52.958	Dendaralasin	0.01
53.098	Spathulenol	0.01
53.395	Caryophyllene oxide	0.16
55.019	Humulene epoxide II	0.03
56.060	1-Epicubenol	0.02
56.294	gamma-Eudesmol	0.01
56.572	Unidentified	0.00
56.912	Unidentified	0.05
57.611	alpha-Eudesmol	0.05
		100.00