

Sample Information

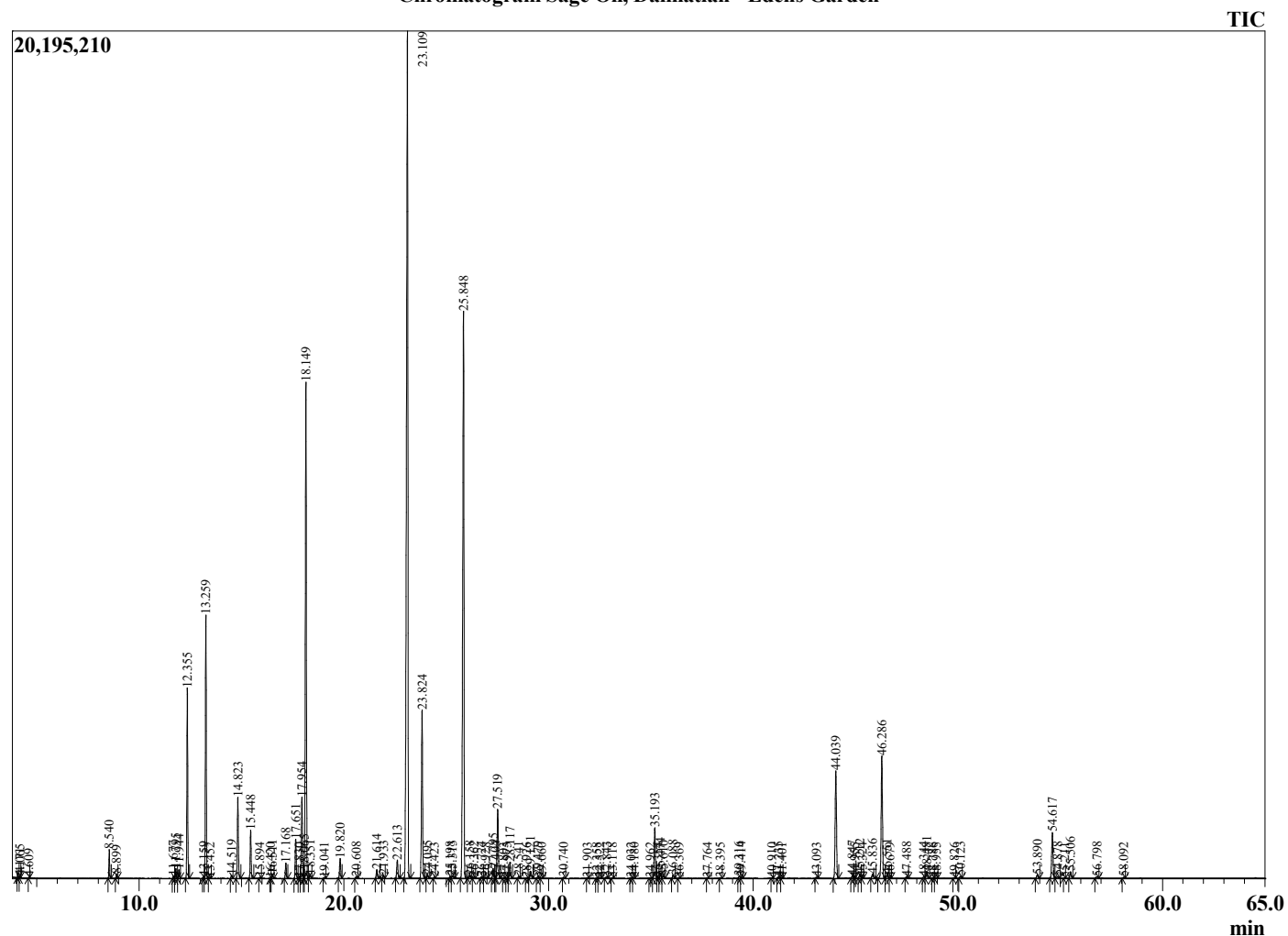
Analyzed by : Dr. Robert S. Pappas
 Analyzed : 7/29/2022 12:58:51 AM
 Sample Type : Essential Oil
 Sample Name : Sage Oil, Dalmatian - Edens Garden
 Sample ID : EG Lot #BB13GAX
 Injection Volume : 0.10
 Instrument ID : GC-4



Peak Report TIC

R.Time	Name	Area%
4.065	3-Methylbutanal	0.06
4.171	2-Methylbutanal	0.02
4.609	2-Ethylfuran	0.01
8.540	cis-Salvene	0.49
8.899	trans-Salvene	0.08
11.677	Hashishene	0.05
11.795	Tricyclene	0.21
11.944	alpha-Thujene	0.18
12.355	alpha-Pinene	4.02
13.159	alpha-Fenchene	0.04
13.259	Camphene	5.61
13.452	Thuja-2,4(10)-diene	0.02
14.519	Sabinene	0.08
14.823	beta-Pinene	2.03
15.448	Myrcene	1.14
15.894	3-Octanol	0.02
16.420	Unidentified	0.01
16.511	alpha-Phellandrene	0.10
17.168	alpha-Terpinene	0.39
17.651	para-Cymene	0.97
17.830	Unidentified	0.02
17.954	Limonene	2.14
18.065	beta-Phellandrene	0.10
18.149	1,8-Cineole	12.72
18.351	(Z)-beta-Ocimene	0.10
19.041	(E)-beta-Ocimene	0.02
19.820	gamma-Terpinene	0.52
20.608	trans-Sabinene hydrate	0.05
21.614	Terpinolene	0.24
21.933	para-Cymenene	0.08
22.613	Linalool	0.55
23.109	alpha-Thujone	29.14
23.824	beta-Thujone	4.63
24.095	Unidentified	0.08
24.423	alpha-Campholenal	0.02
25.198	Isothujol	0.05
25.313	trans-Sabinol	0.09
25.848	Camphor	17.60
26.158	Neothujol	0.07
26.362	trans-beta-Terpineol	0.03
26.724	trans-Pinocamphone	0.05
26.928	Isoborneol	0.04
27.295	Thujanol analogue	0.27
27.404	delta-Terpineol	0.05
27.519	Borneol	1.98
27.803	Isopinocampone	0.01
27.975	Unidentified	0.02
28.117	Terpinen-4-ol	0.47
28.541	para-Cymen-8-ol	0.05
28.926	Unidentified	0.01
29.121	alpha-Terpineol	0.24
29.479	Unidentified	0.05
29.660	Unidentified	0.01
30.740	trans-Carveol	0.02
31.903	(Z)-3-Hexenyl isovalerate	0.01
32.358	Unidentified	0.01
32.522	(E)-2-Hexenyl isovalerate	0.02
32.843	Linalyl acetate	0.06
33.118	Unidentified	0.01
34.032	Unidentified	0.02
34.180	Unidentified	0.02
34.962	Unidentified	0.01

Chromatogram Sage Oil, Dalmatian - Edens Garden



Comments:

The analysis of this Sage Oil, Dalmatian batch sample meets the expected chemical profile for authentic essential oil of *Salvia officinalis*.

No contamination or adulteration was detected. The results provided in this GCMS quality analysis reflect the chemical composition of the oil and lot referenced above on the date of analysis.

R.Time	Name	Area%
35.193	Bornyl acetate	1.53
35.354	Isobornyl acetate	0.03
35.474	trans-Sabinyl acetate	0.15
35.610	Thujyl acetate	0.08
36.088	Carvacrol	0.09
36.369	Unidentified	0.02
37.764	Myrtenyl acetate	0.01
38.395	Unidentified	0.01
39.316	alpha-Terpinyl acetate	0.06
39.414	Unidentified	0.03
40.910	Isoedene	0.01
41.235	alpha-Copaene	0.05
41.401	Geranyl acetate	0.01
43.093	cis-beta-Caryophyllene	0.04
44.039	trans-beta-Caryophyllene	3.53
44.847	Unidentified	0.08
44.955	Unidentified	0.01
45.212	Aromadendrene	0.13
45.324	Unidentified	0.03
45.836	Unidentified	0.15
46.286	alpha-Humulene	3.97
46.551	Alloaromadendrene	0.14
46.679	Unidentified	0.02
47.488	trans-Cadina-1(6),4-diene	0.05
48.344	Unidentified	0.05
48.481	Viridiflorene	0.22
48.786	alpha-Selinene	0.02
48.955	alpha-Murolene	0.01
49.826	gamma-Cadinene	0.02
50.123	delta-Cadinene	0.05
53.890	Caryophyllene oxide	0.12
54.617	Viridiflorol	1.51
54.878	Unidentified	0.07
55.211	Unidentified	0.01
55.506	Humulene epoxide II	0.20
56.798	Unidentified	0.06
58.092	Unidentified	0.02
71.658	Isopimara-9(11),15-diene	0.02
78.309	Manool	0.17
		100.00