

Sample Information

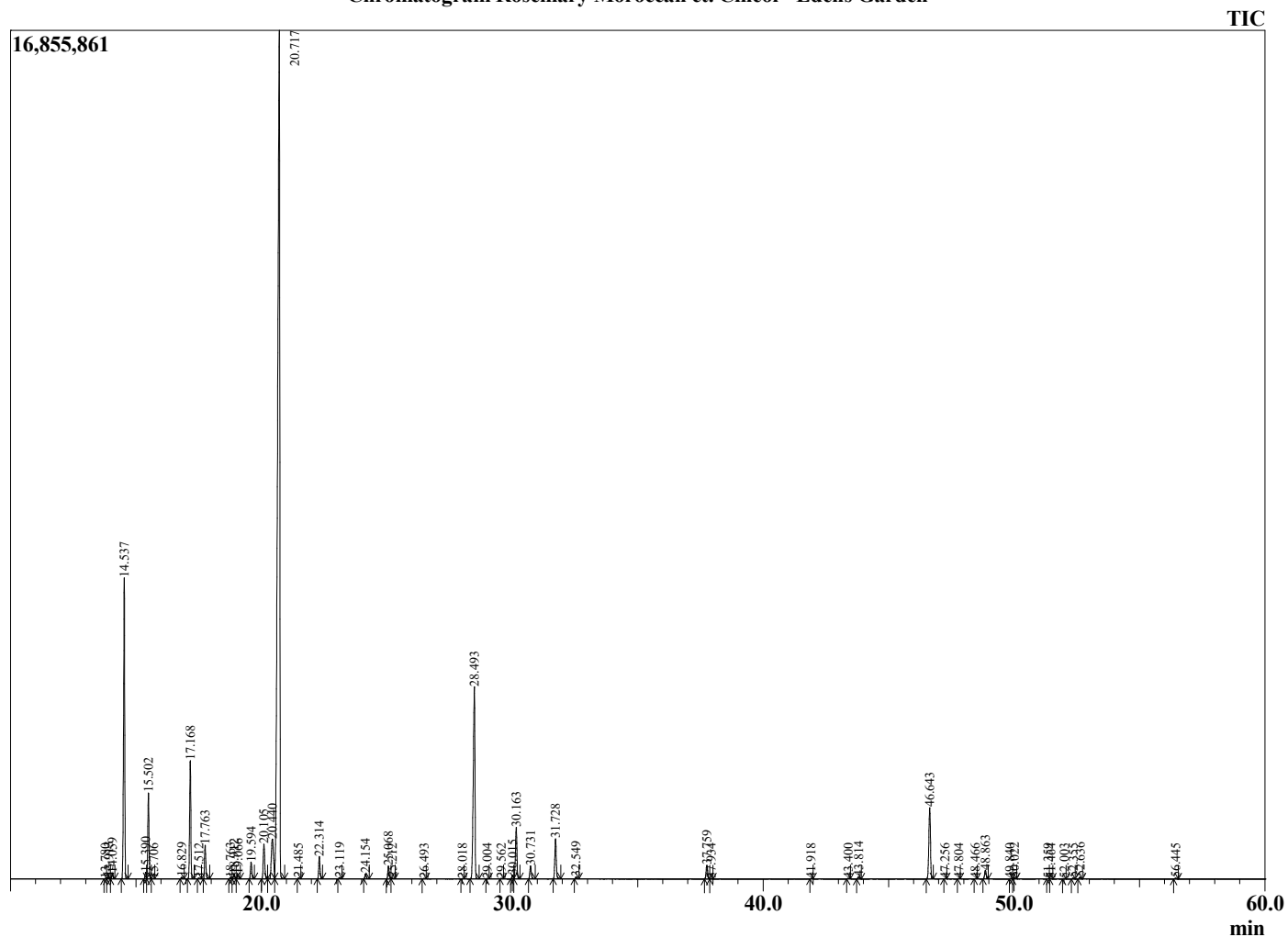
Analyzed by : Dr. Robert S. Pappas
 Analyzed : 7/29/2022 10:09:13 AM
 Sample Type : Essential Oil
 Sample Name : Rosemary Moroccan ct. Cineol - Edens Garden
 Sample ID : EG Lot # BB21JZ
 Injection Volume : 0.10
 Instrument ID : GC-2



Peak Report TIC

R.Time	Name	Area%
13.780	Hashishene	0.01
13.913	Tricyclene	0.07
14.059	alpha-Thujene	0.20
14.537	alpha-Pinene	10.78
15.390	alph-Fenchene	0.23
15.502	Camphene	3.00
15.706	Thuja-2,4(10)-diene	0.01
16.829	Sabinene	0.06
17.168	beta-Pinene	4.25
17.512	3-Octanone	0.02
17.763	Myrcene	1.25
18.763	Pseudolimonene	0.04
18.912	alpha-Phellandrene	0.17
19.066	delta-3-Carene	0.18
19.594	alpha-Terpinene	0.65
20.105	para-Cymene	1.54
20.440	Limonene	2.58
20.717	1,8-Cineole	53.91
21.485	trans-beta-Ocimene	0.03
22.314	gamma-Terpinene	0.86
23.119	trans-Sabinene hydrate	0.06
24.154	Terpinolene	0.20
25.068	Linalool	0.53
25.212	cis-Sabinene hydrate	0.04
26.493	alpha-Fenchol	0.02
28.018	trans-Pinocarveol	0.01
28.493	Camphor	9.57
29.004	Camphene hydrate	0.01
29.562	Isoborneol	0.02
30.015	delta-Terpineol	0.15
30.163	Borneol	2.29
30.731	Terpinen-4-ol	0.57
31.728	alpha-Terpineol	1.74
32.549	Verbenone	0.08
37.759	Bornyl acetate	0.61
37.934	Isobornyl acetate	0.01
41.918	alpha-Cubebene	0.02
43.400	alpha-Ylangene	0.02
43.814	alpha-Copaene	0.10
46.643	beta-Caryophyllene	3.42
47.256	beta-Copaene	0.01
47.804	Aromadendrene	0.02
48.466	Unidentified	0.01
48.863	alpha-Humulene	0.40
49.840	Cadina-1(6),4-diene	0.00
50.022	gamma-Muurolene	0.06
51.359	Unidentified	0.01
51.464	alpha-Muurolene	0.01
52.003	beta-Bisabolene	0.02
52.355	gamma-Cadinene	0.03
52.636	dela-Cadinene	0.08
56.445	Caryophyllene oxide	0.04
		100.00

Chromatogram Rosemary Moroccan ct. Cineol - Edens Garden



Comments:

The analysis of this Rosemary Moroccan ct. Cineol batch sample meets the expected chemical profile for authentic essential oil of Rosmarinus officinalis.

No contamination or adulteration was detected. The results provided in this GCMS quality analysis reflect the chemical composition of the oil and lot referenced above on the date of analysis.