

Sample Information

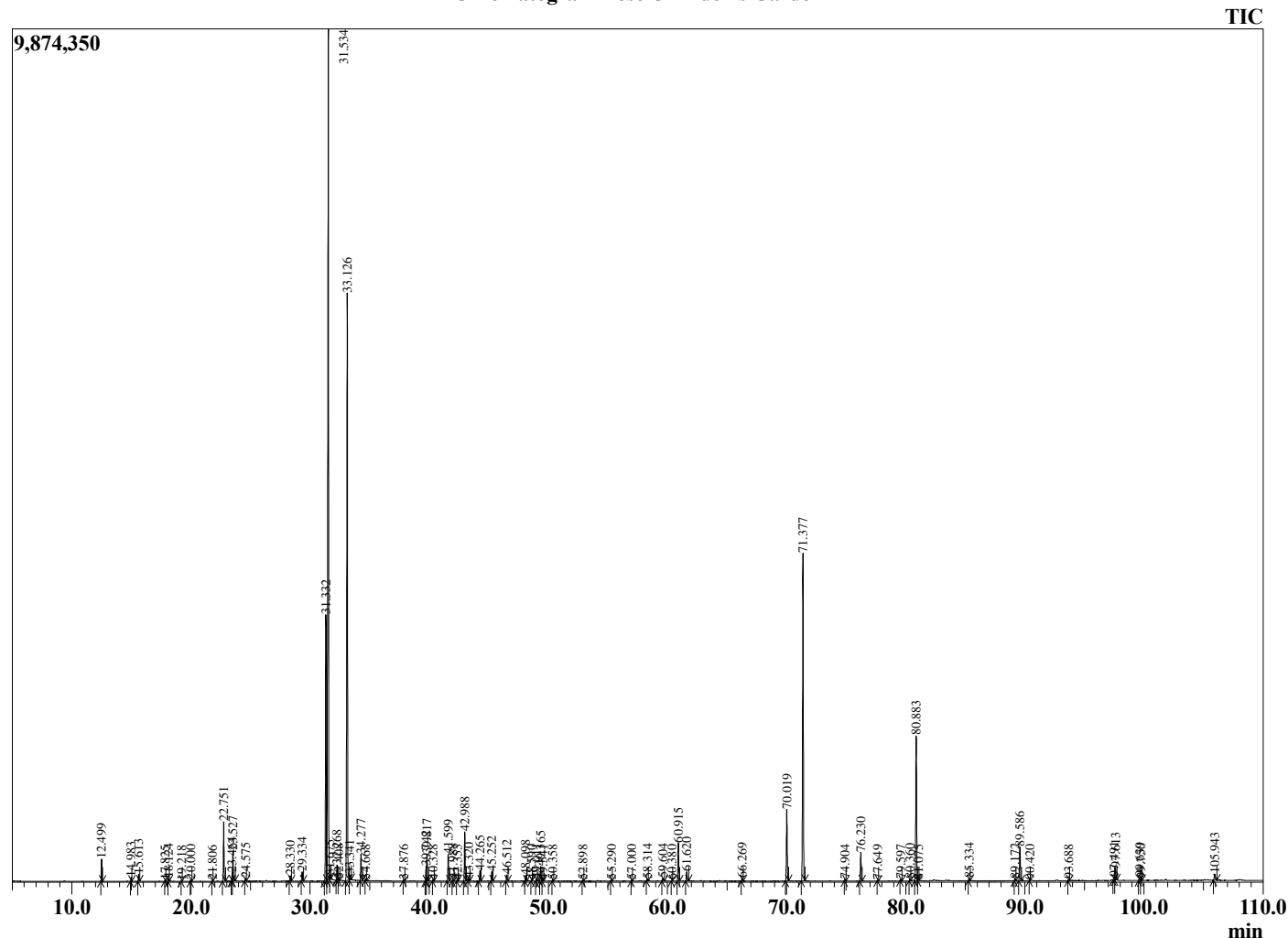
Analyzed by : Dr. Robert S. Pappas  
 Analyzed : 12/21/2020 9:40:40 PM  
 Sample Type : Essential Oil  
 Sample Name : Rose Oil-Eden's Garden  
 Sample ID : BA08GU  
 Injection Volume : 0.10  
 Instrument ID : GC-3



Peak Report TIC

R.Time	Name	Area%
3.052	Ethanol	0.01
12.499	alpha-Pinene	0.51
14.983	beta-Pinene	0.10
15.613	Myrcene	0.18
17.825	para-Cymene	0.02
18.124	Limonene	0.07
19.218	(E)-beta-Ocimene	0.02
20.000	gamma-Terpinene	0.04
21.806	Terpinolene	0.02
22.751	Linalool	1.76
23.464	cis-Rose Oxide	0.19
23.527	Phenethyl alcohol	0.96
24.575	trans-Rose oxide	0.09
28.330	Terpinen-4-ol	0.18
29.334	alpha-Terpineol	0.30
31.332	Nerol	8.37
31.534	Citronellol	31.79
31.675	Isonerol	0.12
32.268	Neral	0.48
32.408	Isogeraniol	0.04
33.126	Geraniol	21.08
33.341	2-Phenethyl acetate	0.21
34.277	Geranial	0.85
34.668	Citronellyl formate	0.03
37.876	Methyl geranate	0.05
39.742	Citronellyl acetate	0.43
39.817	Eugenol	0.89
40.328	Neryl acetate	0.04
41.599	Geranyl acetate	0.87
41.988	beta-Bourbonene	0.07
42.353	beta-Elemene	0.04
42.988	Methyleugenol	1.58
43.320	cis-beta-Caryophyllene	0.10
44.265	trans-beta-Caryophyllene	0.35
45.252	alpha-Guaiene	0.32
46.512	alpha-Humulene	0.22
48.098	Germacrene D	0.19
48.590	beta-Selinene	0.03
49.011	Unidentified	0.07
49.365	Unidentified	0.52
49.541	(E,E)-alpha-Farnesene	0.04
50.358	delta-Cadinene	0.03
52.898	trans-Nerolidol	0.03
55.290	Hexadecane	0.04
57.000	gamma-Eudesmol	0.04
58.314	alpha-Eudesmol	0.08
59.604	Heptadecene	0.11
60.380	Unidentified	0.02
60.915	Heptadecane	1.35
61.620	(2E,6E)-Farnesol	0.36
66.269	Octadecane	0.12
70.019	(Z)-9-Nonadecene	2.69
71.377	Nonadecane	12.16
74.904	Nonadecene isomer	0.05
76.230	Eicosane	1.05
77.649	Unidentified	0.02
79.597	Unidentified	0.05
80.360	Unidentified	0.06
80.883	Heneicosane	5.73
81.075	Unidentified	0.03
85.334	Docosane	0.10
89.172	Unidentified	0.07

Chromatogram Rose Oil-Eden's Garden



Comments:

The analysis of this Rose batch sample meets the expected chemical profile for authentic essential oil of *Rosa damascena*. No contamination or adulteration was detected. The results provided in this GCMS quality analysis reflect the chemical composition of the oil and lot referenced above on the date of analysis.

R.Time	Name	Area%
89.586	Tricosane	1.32
90.420	Unidentified	0.02
93.688	Unidentified	0.04
97.491	Unidentified	0.12
97.613	Pentacosane	0.51
99.639	Unidentified	0.16
99.750	Unidentified	0.06
105.943	Heptacosane	0.32
		100.00