

Sample Information

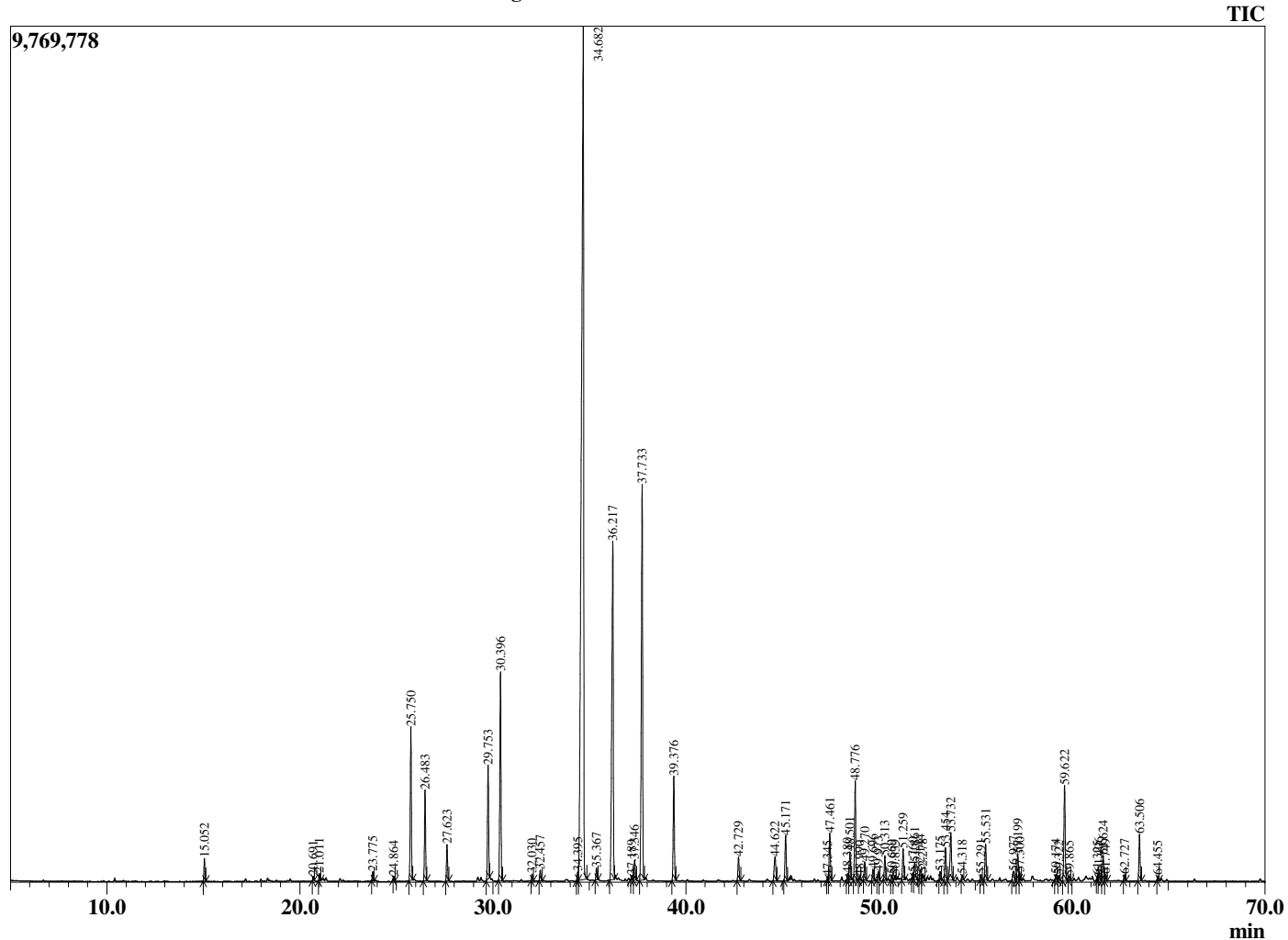
Analyzed by : Dr. Robert S. Pappas  
 Analyzed : 7/12/2020 5:33:20 PM  
 Sample Type : Essential Oil  
 Sample Name : Rose Geranium - Edens Garden  
 Sample ID : BA18FAT  
 Injection Volume : 0.10  
 Instrument ID : GC-2



Peak Report TIC

R.Time	Name	Area%
15.052	alpha-Pinene	0.42
20.691	para-Cymene	0.07
21.011	Limonene	0.14
23.775	cis-Linalool oxide (furanoid)	0.19
24.864	trans-Linalool oxide (furanoid)	0.07
25.750	Linalool	3.48
26.483	cis-Rose oxide	2.01
27.623	trans-Rose oxide	0.82
29.753	Menthone	2.61
30.396	Isomenthone	5.03
32.030	Isomenthol	0.14
32.457	alpha-Terpineol	0.26
34.395	Nerol	0.21
34.682	Citronellol	39.20
35.367	Neral	0.26
36.217	Geraniol	10.55
37.189	trans-Myrtonol	0.10
37.346	Geranial	0.47
37.733	Citronellyl formate	10.34
39.376	Geranyl formate	2.50
42.729	Citronellyl acetate	0.58
44.622	alpha-Copaene	0.79
45.171	beta-Bourbonene	1.15
47.345	beta-Ylangene	0.09
47.461	beta-Caryophyllene	1.19
48.380	alpha-Guaiene	0.15
48.501	Citronellyl propionate	0.67
48.776	6,9-Guaiadiene	2.55
48.990	Unidentified	0.09
49.270	Unidentified	0.43
49.696	alpha-Humulene	0.28
49.973	Alloaromadendrene	0.21
50.313	Geranyl propionate	0.56
50.669	10-beta-H-Cadina-1(6),4-diene	0.13
50.839	trans-Cadina-1(6),4-diene	0.12
51.259	Germacrene D	0.78
51.760	beta-Selinene	0.13
51.861	Viridiflorene (Ledene)	0.48
52.144	Bicyclogermacrene	0.30
52.278	alpha-Murolene	0.19
53.175	gamma-Cadinene	0.20
53.454	delta-Cadinene	0.83
53.732	Citronellyl isobutyrate	1.48
54.318	trans-Cadina-1,4-diene	0.12
55.291	Unidentified	0.12
55.531	Geranyl butyrate	0.91
56.977	Unidentified	0.33
57.199	Phenylethyl tiglate	0.70
57.300	Caryophyllene oxide	0.17
59.174	1,10-di-epi-Cubenol	0.13
59.322	Citronellyl valerate	0.10
59.622	10-epi-gamma-Eudesmol	2.55
59.865	1-epi-Cubenol	0.09
61.325	Valerianol	0.10
61.406	alpha-Eudesmol	0.21
61.624	(E)-Citronellyl tiglate	0.65
61.749	Unidentified	0.16
62.727	(Z)-Citronellyl tiglate	0.14
63.506	Geranyl tiglate	1.17
64.455	(2E,6E)-Farnesol	0.11
		100.00

Chromatogram Rose Geranium - Edens Garden



Comments:

The analysis of this Rose Geranium batch sample meets the expected chemical profile for authentic essential oil of *Pelargonium roseum*. No contamination or adulteration was detected. The results provided in this GCMS quality analysis reflect the chemical composition of the oil and lot referenced above on the date of analysis.