

Sample Information

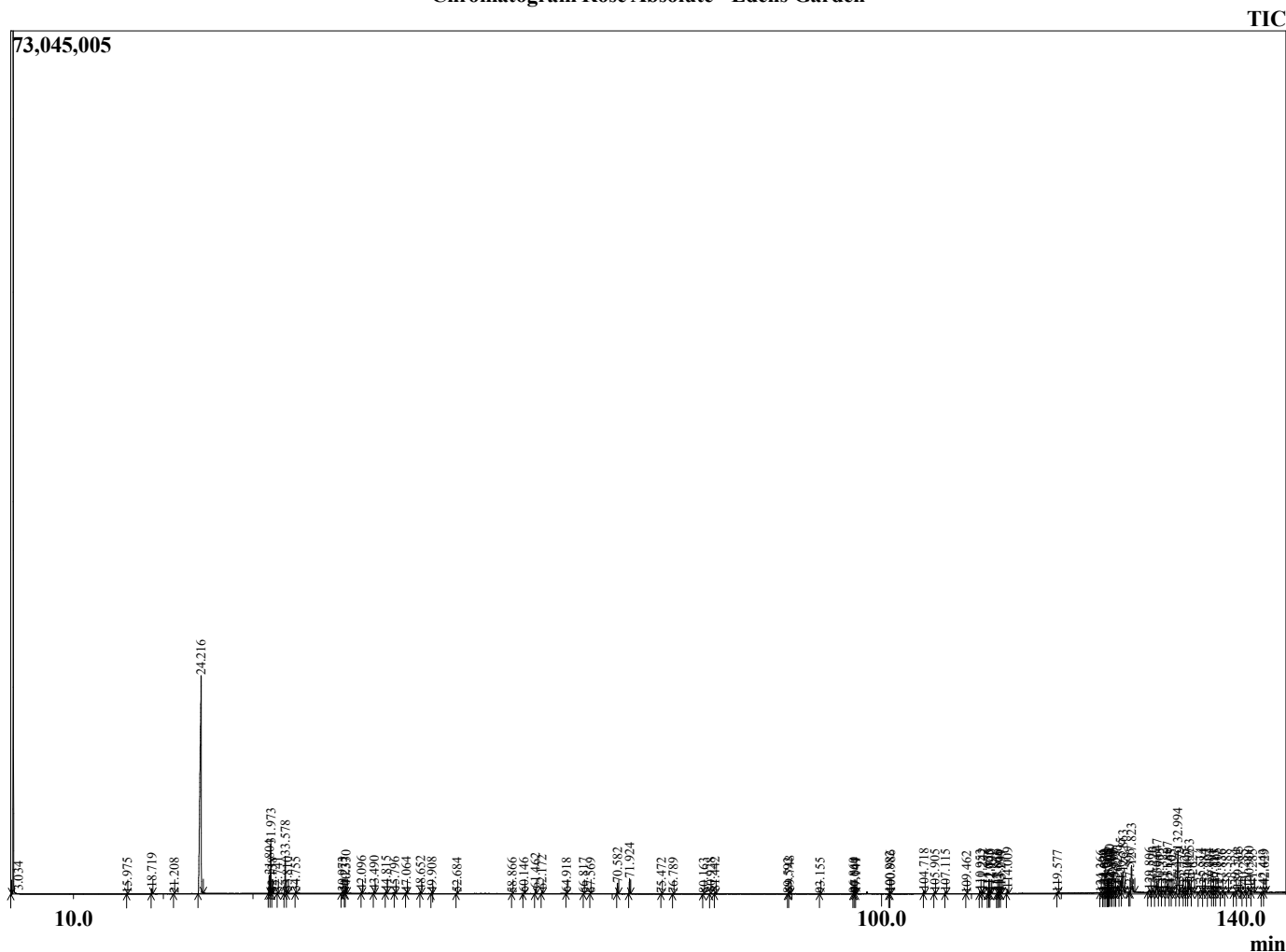
Analyzed by : Dr. Robert S. Pappas
 Analyzed : 7/13/2022 8:34:48 AM
 Sample Type : Essential Oil
 Sample Name : Rose Absolute - Edens Garden
 Sample ID : EG Lot #BC22CU
 Injection Volume : 0.10
 Instrument ID: : GC-3



Peak Report TIC

R.Time	Name	Area%
3.034	Ethanol	0.16
15.975	Myrcene	0.03
18.719	Benzyl alcohol	0.41
21.208	trans-Sabinene hydrate	0.03
24.216	Phenethyl alcohol	48.54
31.804	Nerol	1.60
31.973	Citronellol	4.58
32.138	Isogeraniol	0.03
32.741	Neral	0.06
33.578	Geraniol	3.39
33.810	2-Phenethyl acetate	0.12
34.755	Geranial	0.11
39.973	Geranic acid	0.11
40.237	Citronellyl acetate	0.05
40.330	Eugenol	0.68
42.096	Geranyl acetate	0.18
43.490	Methyleugenol	0.20
44.815	trans-beta-Caryophyllene	0.15
45.796	alpha-Guaiene	0.11
47.064	alpha-Humulene	0.07
48.652	Germacrene D	0.22
49.908	Pentadecane + Unidentified	0.14
52.684	alpha-Elemol	0.06
58.866	beta-Eudesmol	0.04
60.146	Tetradecanol	0.06
61.462	Heptadecane	0.45
62.172	(2E,6E)-Farnesol	0.34
64.918	Benzyl benzoate	0.05
66.817	Octadecane	0.03
67.569	Cryptomeridiol	0.04
70.582	(Z)-9-Nonadecene	1.14
71.924	Nonadecane	1.58
75.472	Eicosene analogue	0.04
76.789	Eicosane	0.06
80.163	Tricosene analogue	0.06
80.928	Eicosene analogue	0.07
81.442	Heneicosane	0.18
89.592	Unidentified	0.02
89.748	Tricos-(9Z)-ene	0.20
93.155	Tetradecyl octanoate	0.05
96.860	Unidentified	0.03
97.044	Tetradecyl nonanoate	0.08
97.141	Pentadecyl octanoate	0.04
100.882	Pentadecyl nonanoate	0.08
100.986	Hexadecyl octanoate	0.10
104.718	2-Phenylethyl dodecanoate	0.31
105.905	Unidentified	0.19
107.115	Unidentified	0.18
109.462	Squalene	0.02
110.953	Unidentified	0.25
111.242	Unidentified	0.25
111.855	Unidentified	0.17
112.005	Unidentified	0.15
112.140	Unidentified	0.17
112.866	Unidentified	0.10
113.019	Unidentified	0.24
113.174	Unidentified	0.06
113.299	Unidentified	0.12
114.009	Unidentified	0.45
119.577	Vitamin E	0.08
124.366	Unidentified	0.04
124.694	Unidentified	0.06

Chromatogram Rose Absolute - Edens Garden



Comments:

The analysis of this Rose Absolute batch sample meets the expected chemical profile for authentic essential oil of Rosa damascena.

No contamination or adulteration was detected. The results provided in this GCMS quality analysis reflect the chemical composition of the oil and lot referenced above on the date of analysis.

©Copyright 2022 by Essential Oil University. All rights reserved. Any publishing, copying, use, dissemination, or distribution of this report, including online, without the express written permission of Essential Oil University is strictly prohibited.

R.Time	Name	Area%
124.870	Unidentified	0.10
125.068	Unidentified	0.15
125.205	Unidentified	0.11
125.332	beta-Amyrin analogue	0.40
125.400	Unidentified	0.67
125.565	Unidentified	0.16
125.800	Unidentified	0.25
125.977	Unidentified	0.05
126.271	beta-Amyrin analogue	0.98
126.595	Lanosterol	2.04
126.863	Lup-20(29)-en-3-one	3.57
127.596	Unidentified	0.04
127.823	alpha-Amyrin analogue	4.32
129.806	Lup-20(29)-en-3-one analogue	0.39
130.226	Lup-20(29)-en-3-one analogue	0.37
130.647	Unidentified	1.72
130.903	Unidentified	0.31
131.322	Unidentified	0.28
131.807	Unidentified	1.32
132.163	Unidentified	0.10
132.305	Unidentified	0.06
132.994	Unidentified	7.42
133.179	Unidentified	0.41
133.725	Unidentified	0.08
134.007	Unidentified	0.12
134.253	Unidentified	2.17
134.627	Unidentified	0.15
135.514	Unidentified	0.43
135.884	Unidentified	0.09
136.404	Unidentified	0.37
136.891	Unidentified	0.08
137.115	Unidentified	0.17
137.305	Unidentified	0.25
137.836	Unidentified	0.08
138.388	Unidentified	0.13
139.324	Unidentified	0.13
139.703	Unidentified	0.65
140.285	Unidentified	0.07
140.900	Unidentified	0.85
141.285	Unidentified	0.15
142.443	Unidentified	0.09
142.629	Unidentified	0.11
		100.00