

Sample Information

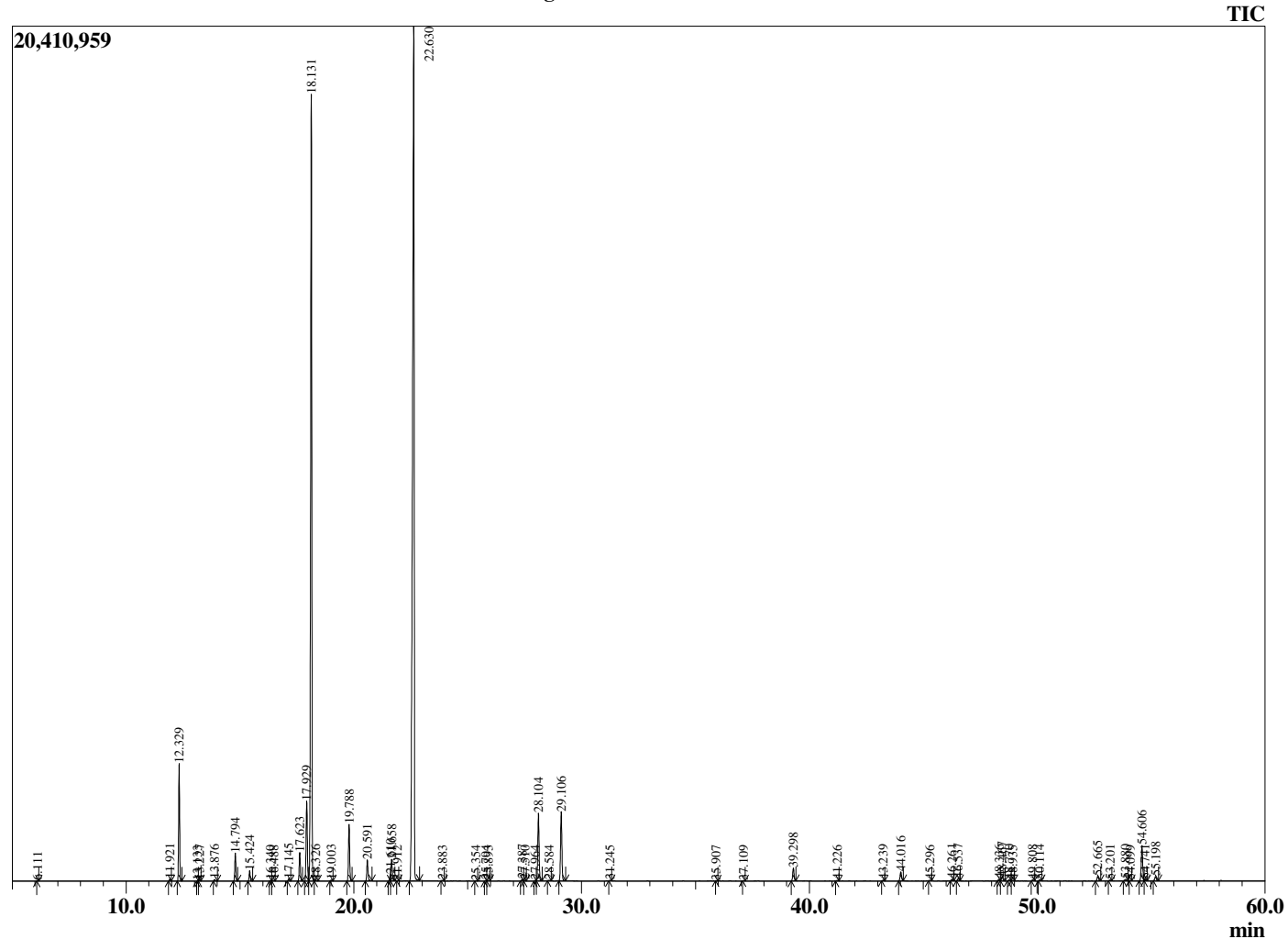
Analyzed by : Dr. Robert S. Pappas
 Analyzed : 3/6/2021 12:02:42 PM
 Sample Type : Essential Oil
 Sample Name : Rosalina - Edens Garden
 Sample ID : BB22AX
 Injection Volume : 0.10
 Instrument ID : GC-4



Peak Report TIC

R.Time	Name	Area%
6.111	Methyl 2-methylbutyrate	0.01
11.921	alpha-Thujene	0.06
12.329	alpha-Pinene	3.64
13.133	alpha-Fenchon	0.01
13.227	Camphene	0.03
13.876	Benzaldehyde	0.05
14.794	beta-Pinene	0.93
15.424	Myrcene	0.34
16.340	Pseudolimonene	0.02
16.488	alpha-Phellandrene	0.03
17.145	alpha-Terpinene	0.09
17.623	para-Cymene	1.04
17.929	Limonene	3.16
18.131	1,8-Cineole	30.41
18.326	(Z)-beta-Ocimene	0.04
19.003	(E)-beta-Ocimene	0.04
19.788	gamma-Terpinene	2.15
20.591	cis-Linalool oxide (furanoid)	0.83
21.610	Terpinolene	0.17
21.658	trans-Linalool oxide (furanoid)	0.87
21.912	para-Cymenene	0.01
22.630	Linalool	46.35
23.883	alpha-Fenchol	0.02
25.354	trans-Pinocarveol	0.01
25.794	Camphor	0.01
25.893	Isopulegol	0.03
27.387	delta-Terpineol	0.05
27.510	Borneol	0.01
27.964	Unidentified	0.01
28.104	Terpinen-4-ol	2.77
28.584	cis-Limonene oxide	0.02
29.106	alpha-Terpineol	2.94
31.245	Unidentified	0.02
35.907	Unidentified	0.01
37.109	Unidentified	0.01
39.298	alpha-Terpineol	0.55
41.226	alpha-Copaene	0.02
43.239	alpha-Gurjunene	0.03
44.016	trans-beta-Caryophyllene	0.42
45.296	6,9-Guanidiene	0.02
46.261	alpha-Humulene	0.07
46.537	Alloaromadendrene	0.10
48.336	beta-Selinene	0.06
48.467	Viridiflorene	0.18
48.770	alpha-Selinene	0.05
48.935	alpha-Murolene	0.01
49.808	gamma-Cadinene	0.04
50.114	delta-Cadinene	0.04
52.665	trans-Nerolidol	0.22
53.201	Palustrol	0.04
53.880	Caryophyllene oxide	0.07
54.099	Unidentified	0.01
54.606	Viridiflorol	1.62
54.741	Guaiol	0.05
55.198	Ledol	0.20
		100.00

Chromatogram Rosalina - Edens Garden



Comments:

The analysis of this Rosalina batch sample meets the expected chemical profile for authentic essential oil of *Melaleuca ericifolia*. No contamination or adulteration was detected. The results provided in this GCMS quality analysis reflect the chemical composition of the oil and lot referenced above on the date of analysis.