

Sample Information

Analyzed by : Dr. Robert S. Pappas
 Analyzed : 12/2/2018 4:03:54 PM
 Sample Type : Essential Oil
 Sample Name : Rosalina - Edens Garden
 Sample ID : AH05LG
 Injection Volume : 0.10
 Instrument ID : GC-2

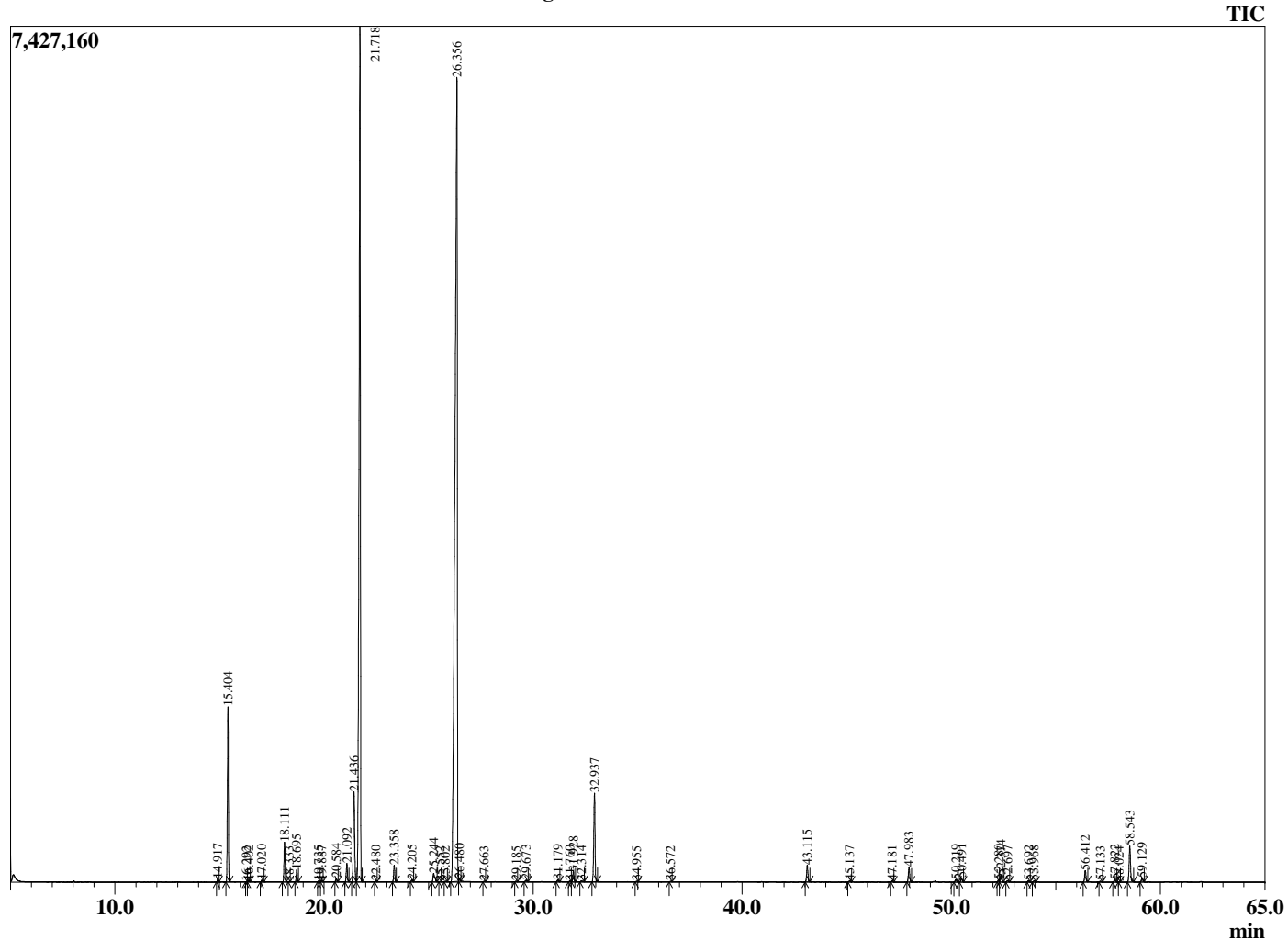


Peak Report TIC

R.Time	Name	Area%
14.917	alpha-Thujene	0.09
15.404	alpha-Pinene	4.48
16.292	alpha-Fenchene	0.01
16.402	Camphene	0.03
17.020	Benzaldehyde	0.06
18.111	beta-Pinene	1.11
18.333	6-methyl-5-Hepten-2-one	0.01
18.695	Myrcene	0.33
19.735	Pseudolimonene	0.02
19.887	alpha-Phellandrene	0.03
20.584	alpha-Terpinene	0.10
21.092	para-Cymene	0.57
21.436	Limonene	3.19
21.718	1,8-Cineole	30.97
22.480	E-beta-Ocimene	0.02
23.358	gamma-Terpinene	0.51
24.205	cis-Linalool oxide (furanoid)	0.06
25.244	Terpinolene	0.39
25.552	Dehydro-p-cymene	0.01
25.802	Methyl benzoate	0.02
26.356	Linalool	50.42
26.480	Hotrienol	0.08
27.663	endo-Fenchol	0.02
29.185	trans-Pinocarveol	0.02
29.673	Isopulegol	0.07
31.179	Terpineol isomer	0.06
31.760	Unidentified	0.03
31.928	Terpinen-4-ol	0.34
32.314	Unidentified	0.04
32.937	alpha-Terpineol	2.99
34.955	Nerol	0.02
36.572	Citronellol	0.02
43.115	alpha-Terpinyl acetate	0.56
45.137	Unidentified	0.04
47.181	alpha-Gurjunene	0.04
47.983	beta-Caryophyllene	0.52
50.219	alpha-Humulene	0.09
50.491	Alloaromadendrene	0.13
52.280	beta-Selinene	0.08
52.374	Viridiflorene	0.26
52.697	alpha-Selinene	0.06
53.692	gamma-Cadinene	0.04
53.968	delta-Cadinene	0.05
56.412	trans-Nerolidol	0.40
57.133	Unidentified	0.03
57.822	Caryophyllene oxide	0.08
58.024	Gleenol	0.01
58.543	Viridiflorol	1.35
59.129	Ledol	0.15
		100.00

This report is valid for 1 year from the analyzed date.

Chromatogram Rosalina - Edens Garden



Comments:

The analysis of this Rosalina batch sample meets the expected chemical profile for authentic essential oil of *Melaleuca quinquenervia*. No contamination or adulteration was detected.