

Sample Information

Analyzed by : Dr. Robert S. Pappas
 Analyzed : 4/5/2019 11:25:17 PM
 Sample Type : Essential Oil
 Sample Name : Roman Chamomile
 Sample ID : AI26CB
 Injection Volume : 0.10
 Instrument ID : GC-3

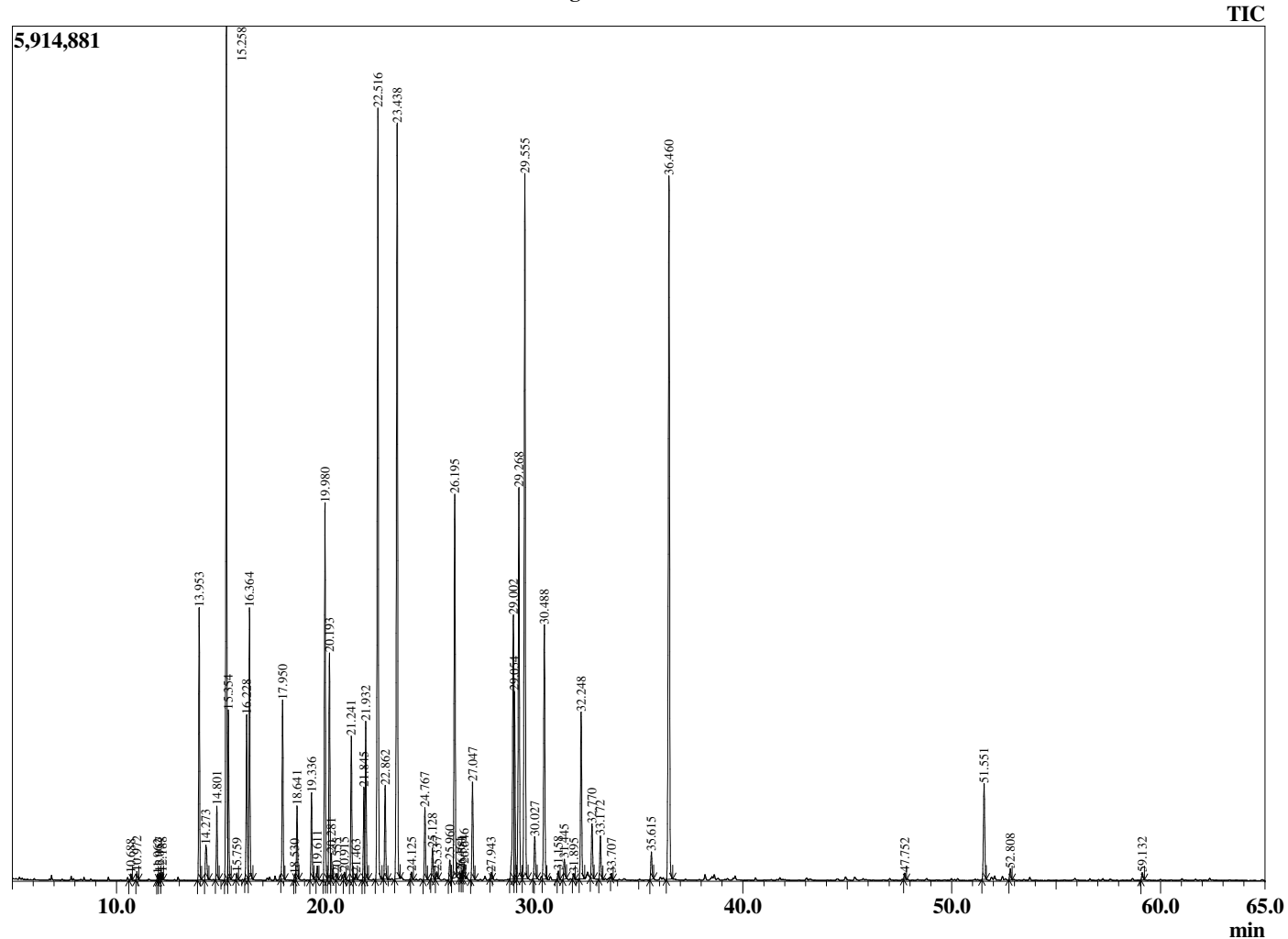


Peak Report TIC

R.Time	Name	Area%
10.688	Ethyl 2-methylbutyrate	0.05
10.972	Propyl isobutyrate	0.08
11.962	Isopentyl acetate	0.06
12.057	2-Methylbutyl acetate	0.07
12.188	Propyl methacrylate	0.07
13.953	Isobutyl isobutyrate	2.60
14.273	Prenyl acetate	0.55
14.801	2,5,8-Trimethyl nonane	0.74
15.258	alpha-Pinene	8.71
15.354	Isobutyl methacrylate	1.62
15.759	Propyl 2-methylbutyrate	0.07
16.228	3-Methylcyclohexanone	1.84
16.364	Isobutyl butyrate	2.74
17.950	beta-Pinene	1.92
18.530	Myrcene	0.07
18.641	Ethyl tiglate isomer	0.79
19.336	Isobutyl 2-methylbutanoate	0.95
19.611	Isobutyl isovalerate	0.14
19.980	Isoamyl isobutyrate	4.08
20.193	2-Methylbutyl isobutyrate	2.46
20.281	Roman chamomile isomer	0.26
20.555	Roman chamomile isomer	0.07
20.915	para-Cymene	0.09
21.241	Limonene	1.63
21.463	1,8-Cineole	0.07
21.845	Pentyl methacrylate	1.06
21.932	Isopentyl methacrylate	1.79
22.516	Isobutyl angelate	9.23
22.862	Prenyl isobutyrate	1.07
23.438	Methylallyl angelate	9.18
24.125	Hexyl propionate	0.08
24.767	Camphenilone	0.83
25.128	Butyl angelate	0.37
25.337	Isobutyl tiglate	0.08
25.960	Isopentyl 2-methylbutyrate	0.23
26.195	2-Methylbutyl-2-methylbutyrate	4.64
26.464	Unidentified	0.06
26.551	2-Methylbutyl isovalerate	0.09
26.646	Isobutyl hexanoate	0.16
27.047	Hexyl isobutyrate	1.17
27.943	alpha-Campholenal	0.08
29.002	trans-Pinocarveol	3.77
29.054	Butanoic Acid Ester	1.72
29.268	Isoamyl angelate	4.97
29.555	Isoamyl tiglate	8.82
30.027	Amyl angelate isomer	0.57
30.488	Pinocarvone	3.23
31.158	Borneol	0.10
31.445	Isopinocampnone	0.26
31.895	Unidentified	0.07
32.248	2-Methyl-2-butene angelate	2.09
32.770	Myrtenal	0.71
33.172	3-Methyl-3-methylpentyl butanoate	0.55
33.707	Isoamyl hexanoate	0.05
35.615	2-Hydroxy-2-methyl-but-3-enyl 2-methyl-2-ci	0.36
36.460	4-Methyl amyl angelate	9.24
47.752	beta-Caryophyllene	0.08
51.551	Germaacrene D	1.32
52.808	(E,E)-alpha-Farnesene	0.14
59.132	Unidentified	0.10
		100.00

This report is valid for 1 year from the analyzed date.

Chromatogram Roman Chamomile



Comments:

The analysis of this Roman Chamomile batch sample meets the expected chemical profile for authentic essential oil of *Anthemis nobilis*. No contamination or adulteration was detected.