

Sample Information

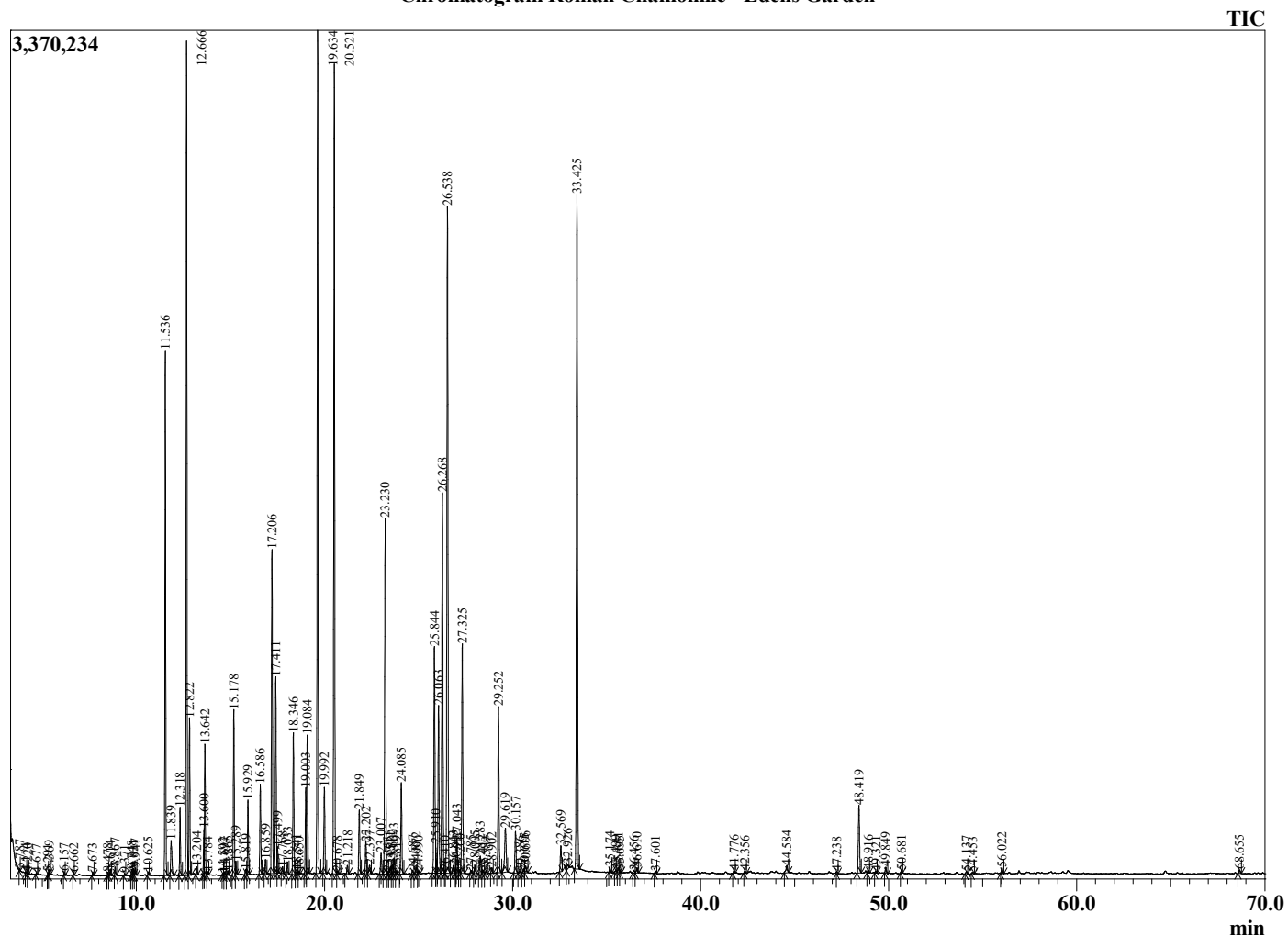
Analyzed by : Dr. Robert S. Pappas
 Analyzed : 7/19/2022 11:44:41 PM
 Sample Type : Essential Oil
 Sample Name : Roman Chamomile - Edens Garden
 Sample ID : EG Lot #BB10GM
 Injection Volume : 0.10
 Instrument ID : GC-3



Peak Report TIC

R.Time	Name	Area%
3.787	Isobutyl alcohol	0.01
4.114	3-Methylbutanal	0.01
4.220	2-Methylbutanal	0.01
4.677	2-Ethylfuran	0.01
5.291	1-Pentanol	0.02
5.369	2-Methyl butanol	0.04
6.157	Isobutyl acetate	0.03
6.662	1-Octene	0.02
7.673	Methyl tiglate	0.03
8.478	3-Methyl pentanol	0.03
8.614	Ethyl 2-methylbutyrate	0.06
8.867	Propyl isobutyrate	0.08
9.371	Isobutyl propionate	0.02
9.748	Isoamyl acetate	0.05
9.831	2-Methylbutyl acetate	0.06
9.947	Propyl methacrylate	0.07
10.625	Unidentified	0.03
11.536	Isobutyl isobutyrate	4.82
11.839	Prenyl acetate	0.53
12.318	2,5,8-Trimethyl nonane	0.66
12.666	alpha-Pinene	8.25
12.822	Isobutyl methacrylate	1.56
13.204	Propyl 2-methylbutyrate	0.08
13.600	Camphene	0.36
13.642	3-Methylcyclohexanone	1.35
13.784	Thuja-2,4(10)-diene	0.04
14.592	Isopentyl propanoate	0.02
14.697	2-Methylbutyl propanoate	0.04
14.865	Sabinene	0.05
15.178	beta-Pinene	1.81
15.289	Unidentified	0.15
15.819	Myrcene	0.08
15.929	Ethyl tiglate isomer	0.79
16.586	Isobutyl 2-methylbutyrate	0.99
16.859	Isobutyl isovalerate	0.16
17.206	Isoamyl isobutyrate	3.75
17.411	2-Methylbutyl isobutyrate	2.27
17.499	Unidentified	0.26
17.768	Unidentified	0.08
18.033	para-Cymene	0.16
18.346	Limonene	1.61
18.541	1,8-Cineole	0.07
18.650	Unidentified	0.03
19.003	Pentyl methacrylate	0.98
19.084	Isopentyl methacrylate	1.62
19.634	Isobutyl angelate	9.27
19.992	Prenyl isobutyrate	1.01
20.521	Methyllyl angelate	9.67
20.678	Unidentified	0.04
21.218	Hexyl propanoate	0.10
21.849	Camphenilone	0.76
22.202	Butyl angelate	0.39
22.397	Isobutyl tiglate	0.13
23.007	Isopentyl 2-methyl butyrate	0.29
23.230	2-Methylbutyl-2-methylbutyrate	4.75
23.365	Unidentified	0.03
23.511	Unidentified	0.11
23.602	2-Methylbutyl isovalerate	0.11
23.693	Isobutyl hexanoate	0.20
23.819	Unidentified	0.04
24.085	Hexyl isobutyrate	1.16
24.687	Unidentified	0.05

Chromatogram Roman Chamomile - Edens Garden



Comments:

The analysis of this Roman Chamomile batch sample meets the expected chemical profile for authentic essential oil of *Anthemis nobilis*.

No contamination or adulteration was detected. The results provided in this GCMS quality analysis reflect the chemical composition of the oil and lot referenced above on the date of analysis.

©Copyright 2022 by Essential Oil University. All rights reserved. Any publishing, copying, use, dissemination, or distribution of this report, including online, without the express written permission of Essential Oil University is strictly prohibited.

R.Time	Name	Area%
24.872	alpha-Campholenal	0.10
24.990	Unidentified	0.04
25.844	trans-Pinocarveol	3.02
25.910	Unidentified	0.22
26.063	Butanoic Acid Ester	2.18
26.268	Isoamyl angelate	4.88
26.410	Unidentified	0.02
26.538	2-Methylbutyl angelate	8.74
26.843	Camphene hydrate	0.12
26.995	Unidentified	0.07
27.043	Amyl angelate isomer	0.44
27.200	trans-Pinocamphone	0.05
27.325	Pinocarvone	2.96
27.785	Unidentified	0.04
28.005	Borneol	0.11
28.283	Isopinocamphone	0.25
28.412	Menthol	0.06
28.589	Unidentified	0.04
28.902	Unidentified	0.07
29.252	2-Methyl-2-butene angelate	2.11
29.619	Myrtenal	0.83
30.157	3-Methyl-3-methylpentyl butanoate	0.59
30.386	Unidentified	0.04
30.615	Unidentified	0.08
30.696	2-Methylbutyl hexanoate	0.11
32.569	2-Hydroxy-2-methyl-but-3-enyl 2-methyl-2-ci	0.38
32.926	Carvone	0.07
33.425	Methylpentyl angelate	9.28
35.174	3-cis-Hexenyl angelate	0.07
35.499	Unidentified	0.02
35.631	Hexyl angelate	0.06
35.695	Bornyl acetate	0.02
36.456	Unidentified	0.04
36.610	3-Methylpentyl-2-methyltiglate	0.08
37.601	2-Ethylbutyl hexanoate	0.03
41.776	alpha-Copaene	0.04
42.356	Unidentified	0.03
44.584	trans-beta-Caryophyllene	0.14
47.238	Myrtenyl isobutyrate	0.02
48.419	Germacrene D	0.96
48.916	beta-Selinene	0.05
49.321	Bicyclogermacrene	0.03
49.849	(E,E)-alpha-Farnesene	0.08
50.681	delta-Cadinene	0.03
54.137	Spathulenol	0.03
54.453	Caryophyllene oxide	0.02
56.022	Copaborneol	0.09
68.655	Phytone	0.05
		100.00