

Sample Information

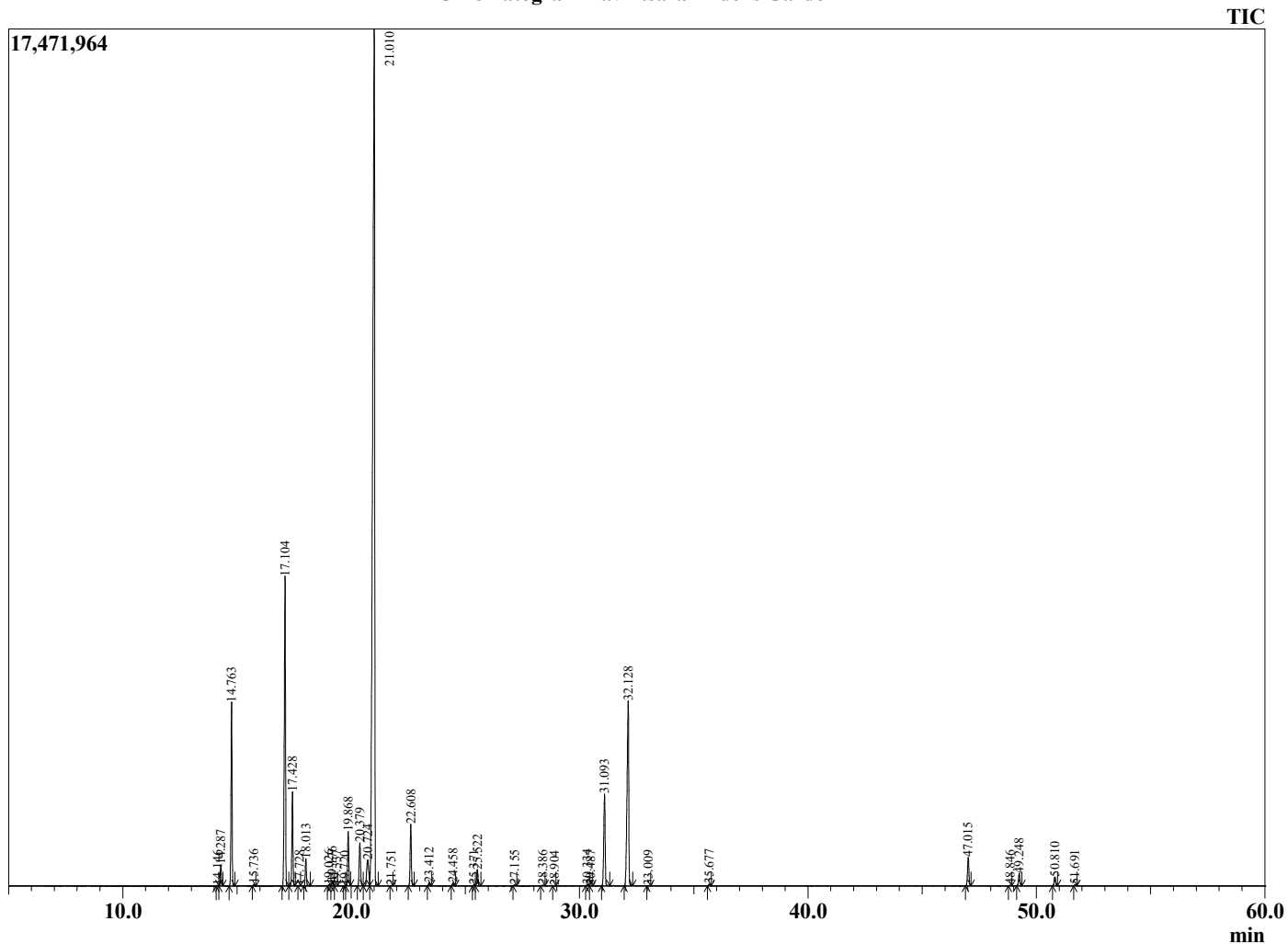
Analyzed by : Dr. Robert S. Pappas
 Analyzed : 3/7/2021 1:49:49 PM
 Sample Type : Essential Oil
 Sample Name : Ravintsara - Edens Garden
 Sample ID : BB22AW
 Injection Volume : 0.10
 Instrument ID : GC-2



Peak Report TIC

R.Time	Name	Area%
14.146	Tricyclene	0.01
14.287	alpha-Thujene	0.65
14.763	alpha-Pinene	5.96
15.736	Camphene	0.05
17.104	Sabinene	11.66
17.428	beta-Pinene	3.13
17.728	Unidentified	0.01
18.013	Myrcene	0.93
19.026	Pseudolimonene	0.05
19.176	alpha-Phellandrene	0.14
19.337	delta-3-Carene	0.01
19.720	1,4-Cineole	0.00
19.868	alpha-Terpinene	1.94
20.379	para-Cymene	1.83
20.724	Limonene	1.61
21.010	1,8-Cineole	53.10
21.751	trans-beta-Ocimene	0.01
22.608	gamma-Terpinene	2.26
23.412	trans-Sabinene hydrate	0.11
24.458	Terpinolene	0.11
25.371	Linalool	0.04
25.522	cis-Sabinene hydrate	0.63
27.155	cis-para-Menth-2-en-1-ol	0.04
28.386	trans-para-Menth-2-en-1-ol	0.03
28.904	Unidentified	0.01
30.334	delta-Terpineol	0.05
30.487	Borneol	0.01
31.093	Terpinen-4-ol	3.84
32.128	alpha-Terpineol	9.49
33.009	cis-Piperitol	0.01
35.677	Linalyl acetate	0.06
47.015	beta-Caryophyllene	1.23
48.846	Humulen-(v1)	0.03
49.248	alpha-Humulene	0.53
50.810	Germacrene D	0.39
51.691	Bicyclogermacrene	0.03
		100.00

Chromatogram Ravintsara - Edens Garden



Comments:

The analysis of this Ravintsara batch sample meets the expected chemical profile for authentic essential oil of *Cinnamomum camphora*. No contamination or adulteration was detected. The results provided in this GCMS quality analysis reflect the chemical composition of the oil and lot referenced above on the date of analysis.