

Sample Information

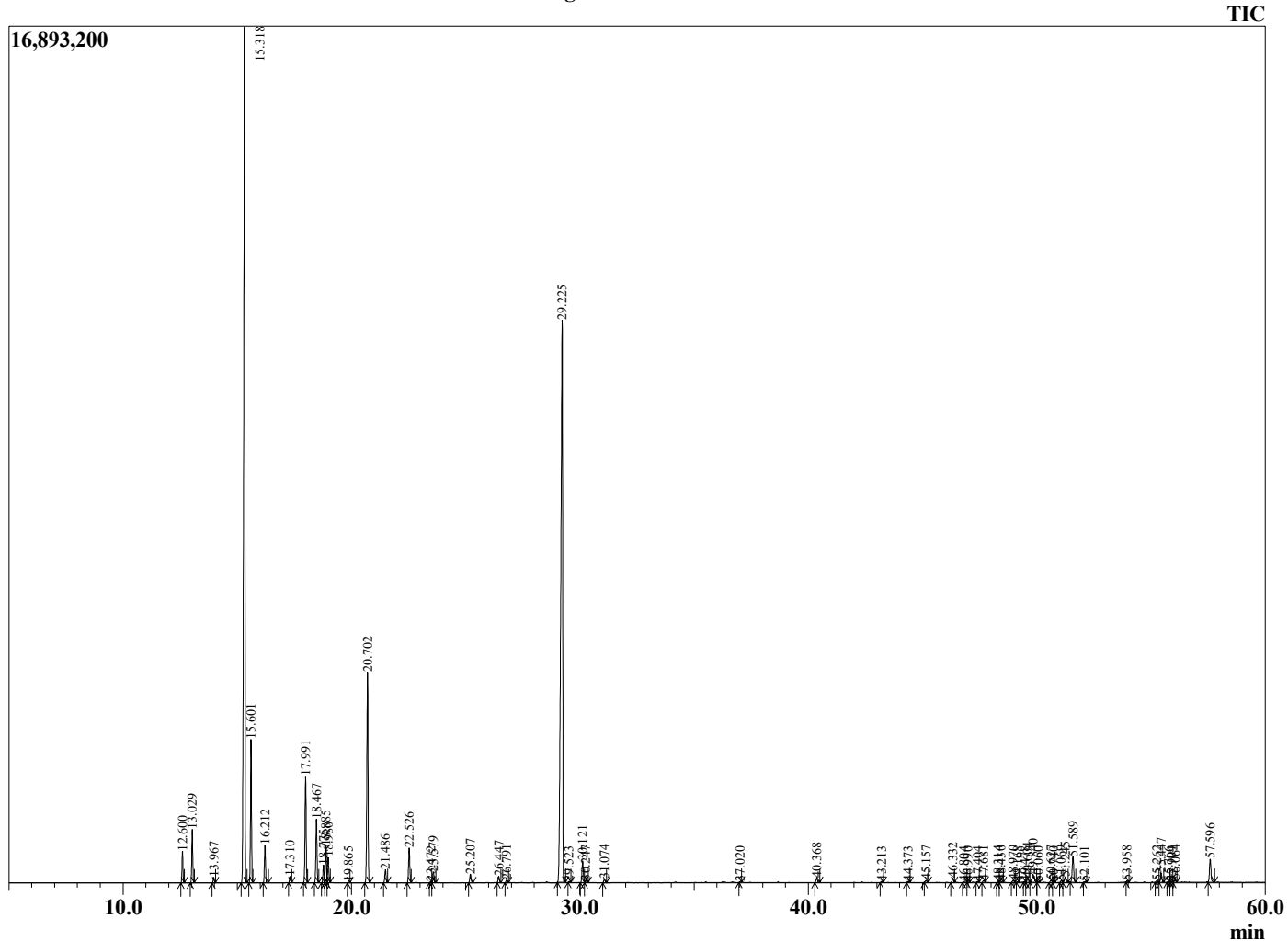
Analyzed by : Dr. Robert S. Pappas
 Analyzed : 7/11/2020 6:17:09 PM
 Sample Type : Essential Oil
 Sample Name : Plai - Edens Garden
 Sample ID : BA18FAS
 Injection Volume : 0.10
 Instrument ID : GC-3



Peak Report TIC

R.Time	Name	Area%
12.600	alpha-Thujene	0.96
13.029	alpha-Pinene	1.68
13.967	Camphene	0.18
15.318	Sabinene	33.19
15.601	beta-Pinene	4.53
16.212	Myrcene	1.26
17.310	alpha-Phellandrene	0.21
17.991	alpha-Terpinene	3.74
18.467	para-Cymene	2.22
18.775	Limonene	0.63
18.885	beta-Phellandrene	1.32
18.980	1,8-Cineole	0.87
19.865	beta-Ocimene	0.02
20.702	gamma-Terpinene	7.85
21.486	trans-Sabinene hydrate	0.49
22.526	Terpinolene	1.31
23.472	Linalool	0.04
23.579	cis-Sabinene hydrate	0.42
25.207	cis-para-Menth-2-en-1-ol	0.35
26.447	trans-para-Menth-2-en-1-ol	0.24
26.791	Camphor	0.11
29.225	Terpinen-4-ol	32.09
29.523	para-Cymen-8-ol	0.03
30.121	alpha-Terpineol	0.88
30.247	cis-Piperitol	0.09
31.074	trans-Piperitol	0.14
37.020	Unidentified	0.02
40.368	alpha-Terpinyl acetate	0.19
43.213	beta-Elementene	0.05
44.373	alpha-Gurjunene	0.05
45.157	beta-Caryophyllene	0.09
46.332	Aromadendrene	0.20
46.804	alpha-Guaiene	0.02
46.990	cis-Murrola-3,5-diene	0.02
47.404	alpha-Humulene	0.04
47.681	Alloaromadendrene	0.09
48.314	Unidentified	0.06
48.430	10-beta-H-Cadina-1(6),4-diene	0.07
48.970	Ar-Curcumene	0.10
49.168	Unidentified	0.02
49.478	beta-Selinene	0.03
49.604	Viridiflorene (Ledene)	0.18
49.840	alpha-Zingiberene	0.46
50.060	alpha-Murolene	0.02
50.627	beta-Bisabolene	0.11
50.740	beta-Curcumene	0.03
51.069	cis-1-(3,4-Dimethoxyphenyl)but-1-ene	0.07
51.245	delta-Cadinene	0.24
51.589	beta-Sesquiphellandrene	1.18
52.101	trans-Cadina-1,4-diene	0.03
53.958	cis-1-(3,4-dimethoxyphenyl)butadiene	0.06
55.262	Globulol	0.08
55.447	trans-1-(3,4-Dimethoxyphenyl)but-1-ene	0.41
55.766	Unidentified	0.03
55.904	Unidentified	0.03
56.064	Curzerenone	0.10
57.596	trans-1-(3,4-dimethoxyphenyl)butadiene	1.07
		100.00

Chromatogram Plai - Edens Garden



Comments:

The analysis of this Plai batch sample meets the expected chemical profile for authentic essential oil of *Zingiber cassumunar*. No contamination or adulteration was detected.

The results provided in this GCMS quality analysis reflect the chemical composition of the oil and lot referenced above on the date of analysis.