

Sample Information

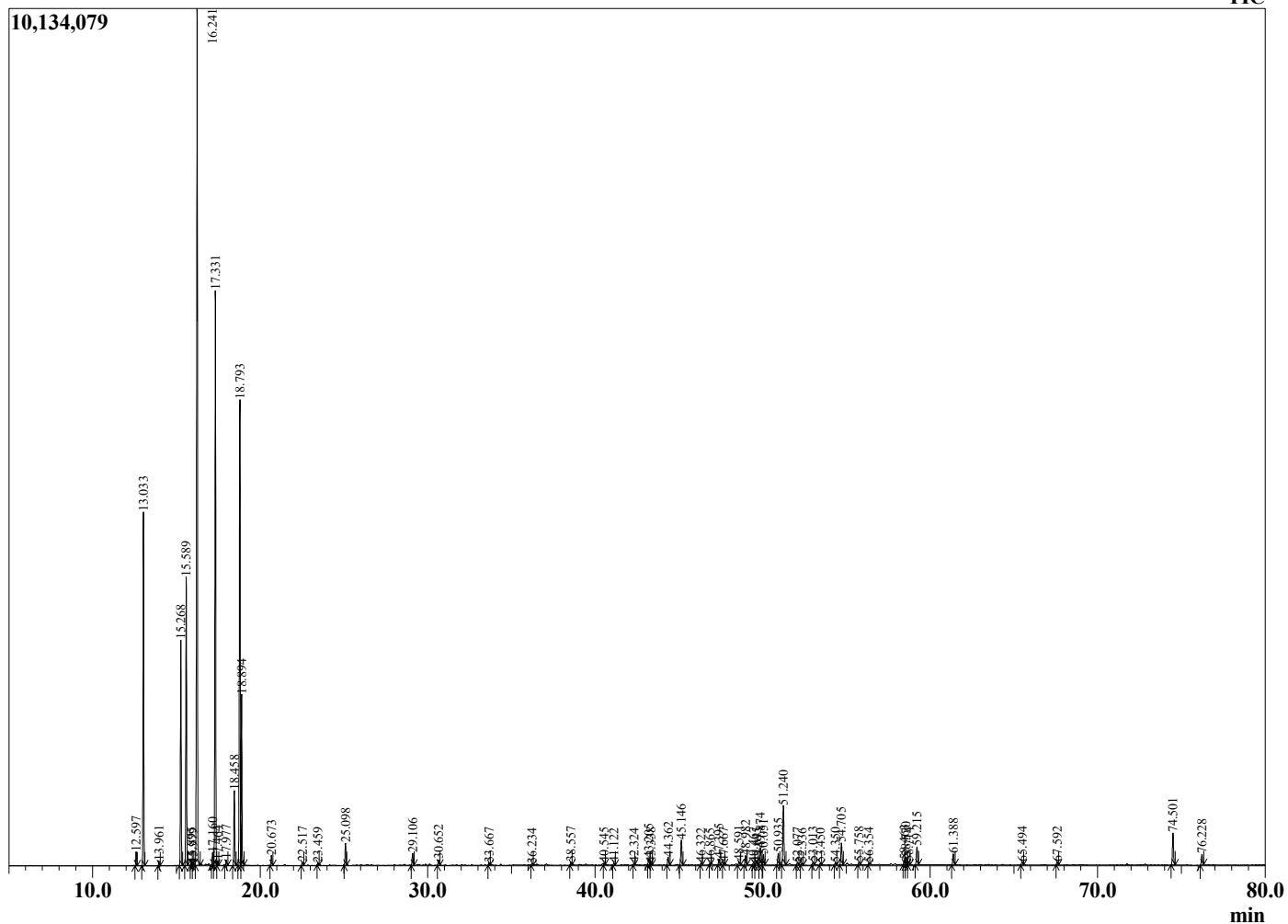
Analyzed by : Dr. Robert S. Pappas
 Analyzed : 7/12/2020 2:09:56 AM
 Sample Type : Essential Oil
 Sample Name : Pink Pepper - Edens Garden
 Sample ID : BA18FAR
 Injection Volume : 0.10
 Instrument ID : GC-3



Peak Report TIC

R.Time	Name	Area%
12.597	alpha-Thujene	0.35
13.033	alpha-Pinene	8.81
13.961	Camphene	0.12
15.268	Sabinene	6.04
15.589	beta-Pinene	7.65
15.895	Unidentified	0.08
15.979	3-para-Menthene	0.04
16.241	Myrcene	25.63
17.160	Pseudolimonene	0.36
17.331	alpha-Phellandrene	16.08
17.464	delta-3-Carene	0.12
17.977	alpha-Terpinene	0.17
18.458	para-Cymene	2.17
18.793	Limonene	14.45
18.894	beta-Phellandrene	4.67
20.673	gamma-Terpinene	0.31
22.517	Terpinolene	0.11
23.459	Linalool	0.06
25.098	methyl-Caprylate	0.69
29.106	Terpinen-4-ol	0.39
30.652	alpha-Phellandrene epoxide	0.18
33.667	Unidentified	0.07
36.234	Bornyl acetate	0.05
38.557	Unidentified	0.11
40.545	Citronellyl acetate	0.07
41.122	Neryl acetate	0.07
42.324	alpha-Copaene	0.06
43.205	beta-Elemene	0.21
43.338	Unidentified	0.06
44.362	alpha-Gurjunene	0.29
45.146	beta-Caryophyllene	0.93
46.322	Alloaromadendrene	0.06
46.865	Unidentified	0.04
47.395	alpha-Humulene	0.21
47.667	Alloaromadendrene	0.08
48.591	cis-Cadina-1(6),4-diene	0.13
48.982	Germacrene D	0.34
49.467	beta-Selinene	0.10
49.645	trans-Cadina-1(6),4-diene	0.10
49.874	Bicyclogermacrene	0.64
50.051	alpha-Muurolene	0.38
50.935	gamma-Cadinene	0.44
51.240	delta-Cadinene	2.20
52.077	trans-Sesquisabinene hydrate	0.09
52.336	alpha-Muurolene	0.07
53.013	Elemol	0.11
53.450	Geranyl butyrate	0.05
54.350	Ledol	0.08
54.705	Unidentified	0.81
55.758	Viridiflorol	0.10
56.354	Ledol	0.06
58.463	tau-Cadinol	0.16
58.570	epi-alpha-Cadinol	0.31
58.714	delta-Cadinol	0.10
59.215	alpha-Cadinol	0.69
61.388	Unidentified	0.40
65.494	Unidentified	0.13
67.592	Unidentified	0.11
74.501	Myrcene dimer I	1.20
76.228	Myrcene dimer II	0.40
		100.00

Chromatogram Pink Pepper - Edens Garden



Comments:

The analysis of this Pink Pepper batch sample meets the expected chemical profile for authentic essential oil of *Schinus molle*. No contamination or adulteration was detected. The results provided in this GCMS quality analysis reflect the chemical composition of the oil and lot referenced above on the date of analysis.