

Sample Information

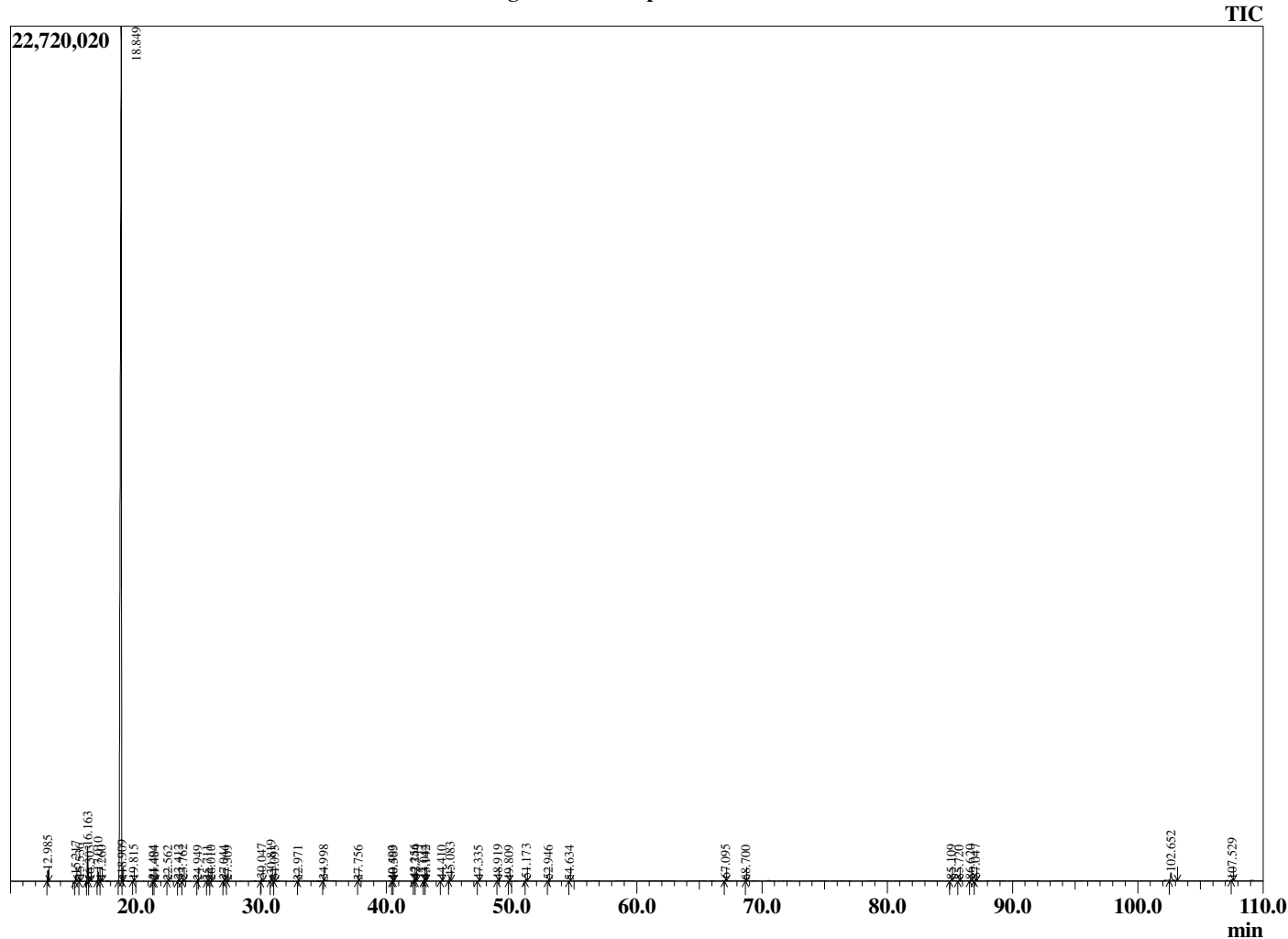
Analyzed by : Dr. Robert S. Pappas  
 Analyzed : 10/19/2020 11:07:23 PM  
 Sample Type : Essential Oil  
 Sample Name : Pink Grapefruit - Edens Garden  
 Sample ID : BA29IW  
 Injection Volume : 0.10  
 Instrument ID : GC-3



Peak Report TIC

R.Time	Name	Area%
12.985	alpha-Pinene	0.55
15.217	Sabinene	0.30
15.536	beta-Pinene	0.12
16.163	Myrcene	1.93
16.303	Unidentified	0.06
17.010	Octanal	0.51
17.260	alpha-Phellandrene	0.06
18.849	Limonene	92.62
18.909	Unidentified	0.17
19.815	(E)-beta-Ocimene	0.08
21.404	1-Octanol	0.05
21.484	cis-Linalool oxide (furanoid)	0.03
22.562	trans-Linalool oxide (furanoid)	0.03
23.412	Linalool	0.08
23.762	Nonanal	0.08
24.949	trans-para-Mentha-2,8-dien-1-ol	0.01
25.711	cis-Limonene oxide	0.02
26.010	trans-Limonene oxide	0.02
27.044	Citronellal	0.05
27.309	Unidentified	0.01
30.047	alpha-Terpineol	0.15
30.819	Decanal	0.42
31.093	Octyl acetate	0.05
32.971	Neral	0.02
34.998	Geranial	0.04
37.756	Undecenal	0.01
40.493	Unidentified	0.02
40.569	Eugenol	0.02
42.256	alpha-Copaene	0.13
42.344	Geranyl acetate	0.06
43.044	beta-Cubebene	0.09
43.142	beta-Elemene	0.02
44.410	Dodecanol	0.05
45.083	beta-Caryophyllene	0.31
47.335	alpha-Humulene	0.05
48.919	Germacrene D	0.07
49.809	Bicyclogermacrene	0.02
51.173	delta-Cadinene	0.12
52.946	Elemol	0.04
54.634	Unidentified	0.01
67.095	Nootkatone	0.12
68.700	Unidentified	0.01
85.109	Unidentified furocoumarin	0.08
85.720	Unidentified	0.04
86.620	Unidentified furocoumarin	0.08
87.047	Unidentified	0.15
102.652	Aurapten	0.99
107.529	Unidentified	0.05
		100.00

Chromatogram Pink Grapefruit - Edens Garden



Comments:

The analysis of this Pink Grapefruit batch sample meets the expected chemical profile for authentic essential oil of *Citrus paradisi*. No contamination or adulteration was detected. The results provided in this GCMS quality analysis reflect the chemical composition of the oil and lot referenced above on the date of analysis.