

Sample Information

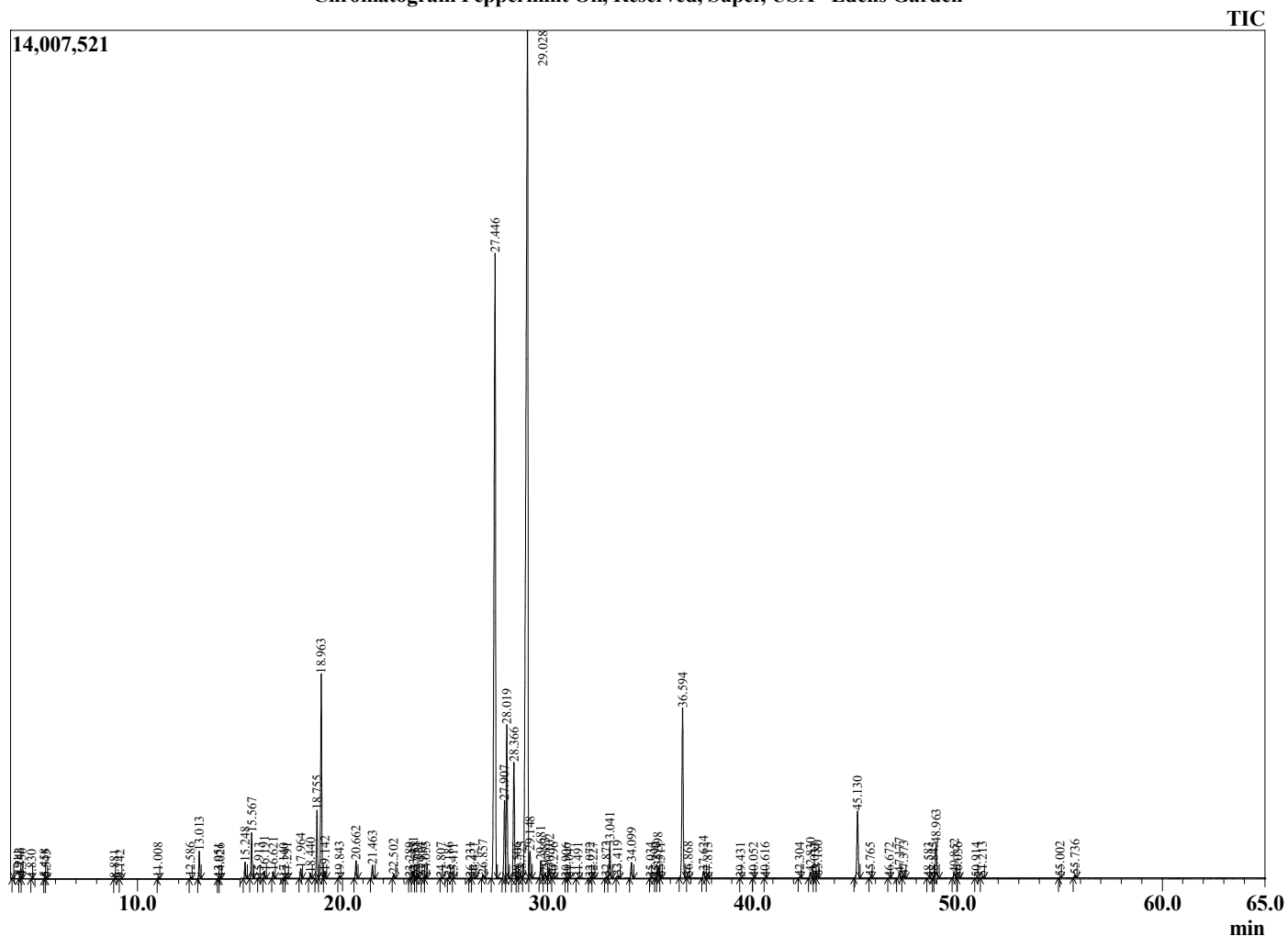
Analyzed by : Dr. Robert S. Pappas  
 Analyzed : 7/13/2022 2:49:21 AM  
 Sample Type : Essential Oil  
 Sample Name : Peppermint Oil, Reserved, Super, USA - Edens Garden  
 Sample ID : BB12GAS  
 Injection Volume : 0.10  
 Instrument ID : GC-3



Peak Report TIC

R.Time	Name	Area%
3.911	Isobutyl alcohol	0.00
4.243	3-Methylbutanal	0.03
4.356	2-Methylbutanal	0.02
4.830	2-Ethylfuran	0.01
5.458	Isoamyl alcohol	0.02
5.545	2-Methyl butanol	0.01
8.881	Ethyl 2-methylbutyrate	0.01
9.142	Hex-3(Z)-enol	0.01
11.008	2,5-Diethyltetrahydrofuran	0.03
12.586	alpha-Thujene	0.04
13.013	alpha-Pinene	0.61
13.951	Camphene	0.02
14.026	3-Methyl cyclohexanone	0.02
15.248	Sabinene	0.39
15.567	beta-Pinene	1.11
15.913	3-Octanone	0.01
16.191	Myrcene	0.18
16.621	3-Octanol	0.16
17.140	Pseudolimonene	0.01
17.291	alpha-Phellandrene	0.03
17.964	alpha-Terpinene	0.25
18.440	para-Cymene	0.14
18.755	Limonene	1.74
18.963	1,8-Cineole	5.36
19.142	cis-beta-Ocimene	0.18
19.843	trans-beta-Ocimene	0.05
20.662	gamma-Terpinene	0.46
21.463	trans-Sabinene hydrate	0.38
22.502	Terpinolene	0.12
23.289	3-Nonanol	0.02
23.451	Linalool	0.18
23.558	cis-Sabinene hydrate	0.04
23.681	2-Methylbutyl-2-methylbutyrate	0.06
23.916	Isoamyl isovalerate	0.02
24.055	2-Methylbutyl isovalerate	0.06
24.807	3-Octyl acetate	0.01
25.186	cis-para-Menth-2-en-1-ol	0.04
25.411	allo-Ocimene	0.00
26.231	trans-Sabinol	0.02
26.427	trans-para-Menth-2-en-1-ol	0.03
26.857	Isopulegol	0.10
27.446	Menthone	22.75
27.907	Menthofuran	2.28
28.019	Isomenthone	4.38
28.366	Neomenthol	3.49
28.506	Borneol	0.02
28.725	trans-Isopulegone	0.08
29.028	Menthol	41.15
29.148	Terpinen-4-ol	0.85
29.681	Isomenthol	0.51
29.883	Neoisomenthol	0.15
30.102	alpha-Terpineol	0.28
30.296	Unidentified	0.02
30.906	Unidentified	0.01
31.047	trans-Piperitol	0.01
31.491	Unidentified	0.03
32.072	Nerol	0.01
32.227	Citronellol	0.02
32.872	Hex-(3Z)-enyl isovalerate	0.04
33.041	Pulegone	0.95
33.419	Carvone	0.08
34.099	Piperitone	0.47

Chromatogram Peppermint Oil, Reserved, Super, USA - Edens Garden



Comments:

The analysis of this Peppermint Oil, Reserved, Super, USA batch sample meets the expected chemical profile for authentic essential oil of *Mentha piperita*.

No contamination or adulteration was detected. The results provided in this GCMS quality analysis reflect the chemical composition of the oil and lot referenced above on the date of analysis.

©Copyright 2022 by Essential Oil University. All rights reserved. Any publishing, copying, use, dissemination, or distribution of this report, including online, without the express written permission of Essential Oil University is strictly prohibited.

R.Time	Name	Area%
35.034	Geranial	0.01
35.290	Unidentified	0.02
35.398	Neomenthyl acetate	0.34
35.511	Unidentified	0.02
36.594	Menthyl acetate	5.48
36.868	Dihydroedulan I	0.05
37.624	Isomenthyl acetate	0.22
37.813	Unidentified	0.01
39.431	Unidentified	0.01
40.052	Unidentified	0.01
40.616	Eugenol	0.01
42.304	alpha-Copaene	0.02
42.830	beta-Bourbonene	0.19
43.033	alpha-Bourbonene	0.02
43.180	beta-Elemene	0.07
45.130	beta-Caryophyllene	2.19
45.765	beta-Copaene	0.03
46.672	Unidentified	0.01
47.177	trans-beta-Farnesene	0.17
47.373	alpha-Humulene	0.07
48.583	trans-Cadina-1(6),4-diene	0.01
48.845	alpha-Amorphene	0.01
48.963	Germacrene D	1.13
49.852	Bicyclogermacrene	0.17
50.036	alpha-Murolene	0.02
50.914	gamma-Cadinene	0.01
51.213	delta-Cadinene	0.05
55.002	Caryophyllene oxide	0.03
55.736	Viridiflorol	0.09
		100.00