

Sample Information

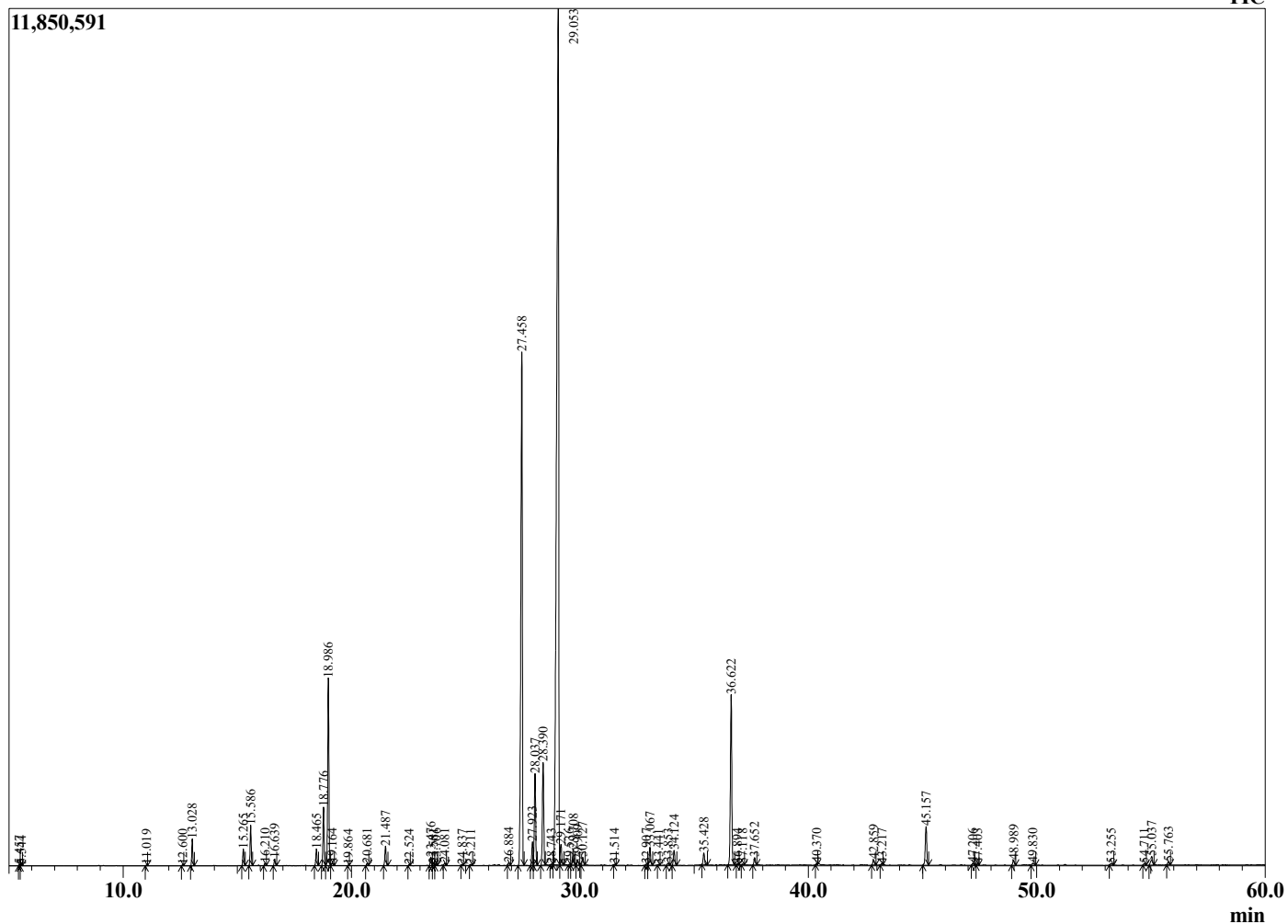
Analyzed by : Dr. Robert S. Pappas
 Analyzed : 7/12/2020 9:51:52 PM
 Sample Type : Essential Oil
 Sample Name : Peppermint - Edens Garden
 Sample ID : BA18FAP
 Injection Volume : 0.10
 Instrument ID : GC-3



Peak Report TIC

R.Time	Name	Area%
4.241	3-methyl Butanal	0.01
4.354	2-methyl Butanal	0.01
5.457	1-Pentanol	0.02
5.544	2-methyl Butanol	0.02
11.019	2,5-Diethyltetrahydrofuran	0.02
12.600	alpha-Thujene	0.03
13.028	alpha-Pinene	0.71
15.265	Sabinene	0.47
15.586	beta-Pinene	1.15
16.210	Myrcene	0.07
16.639	3-Octanol	0.19
18.465	para-Cymene	0.51
18.776	Limonene	1.78
18.986	1,8-Cineole	5.88
19.164	cis-beta-Ocimene	0.07
19.864	trans-beta-Ocimene	0.01
20.681	gamma-Terpinene	0.06
21.487	trans-Sabinene hydrate	0.62
22.524	Terpinolene	0.02
23.476	Linalool	0.27
23.581	cis-Sabinene hydrate	0.06
23.706	2-Methylbutyl-2-methylbutyrate	0.05
24.081	2-Methylbutyl isovalerate	0.07
24.837	3-Octyl acetate	0.02
25.211	cis-para-Menth-2-en-1-ol	0.04
26.884	Isopulegol	0.09
27.458	Menthone	20.13
27.923	Menthofuran	0.80
28.037	Isomenthone	3.13
28.390	Neomenthol	3.63
28.743	trans-Isopulegone	0.03
29.053	Menthol	46.92
29.171	Terpinen-4-ol	0.78
29.536	para-Cymen-8-ol	0.03
29.708	Isomenthol	0.55
29.909	Neoisomenthol	0.17
30.127	alpha-Terpineol	0.28
31.514	Unidentified	0.03
32.907	3-Hexenyl isovalerate	0.05
33.067	Pulegone	0.64
33.441	Carvone	0.02
33.853	Linalyl acetate	0.08
34.124	Piperitone	0.54
35.428	Neomenthol acetate	0.44
36.622	Menthyl acetate	6.30
36.894	Dihydroedulan I	0.03
37.118	Unidentified	0.03
37.652	Isomenthyl acetate	0.27
40.370	Unidentified	0.05
42.859	beta-Bourbonene	0.20
43.217	beta-Elementene	0.04
45.157	beta-Caryophyllene	1.53
47.206	(Z)-beta-Farnesene	0.07
47.403	alpha-Humulene	0.04
48.989	Germacrene D	0.20
49.830	Menthylactone	0.10
53.255	Unidentified	0.08
54.711	Spathulenol	0.06
55.037	Caryophyllene oxide	0.40
55.763	Viridiflorol	0.11
		100.00

Chromatogram Peppermint - Edens Garden



Comments:

The analysis of this Peppermint batch sample meets the expected chemical profile for authentic essential oil of *Mentha piperita*. No contamination or adulteration was detected. The results provided in this GCMS quality analysis reflect the chemical composition of the oil and lot referenced above on the date of analysis.