

Sample Information

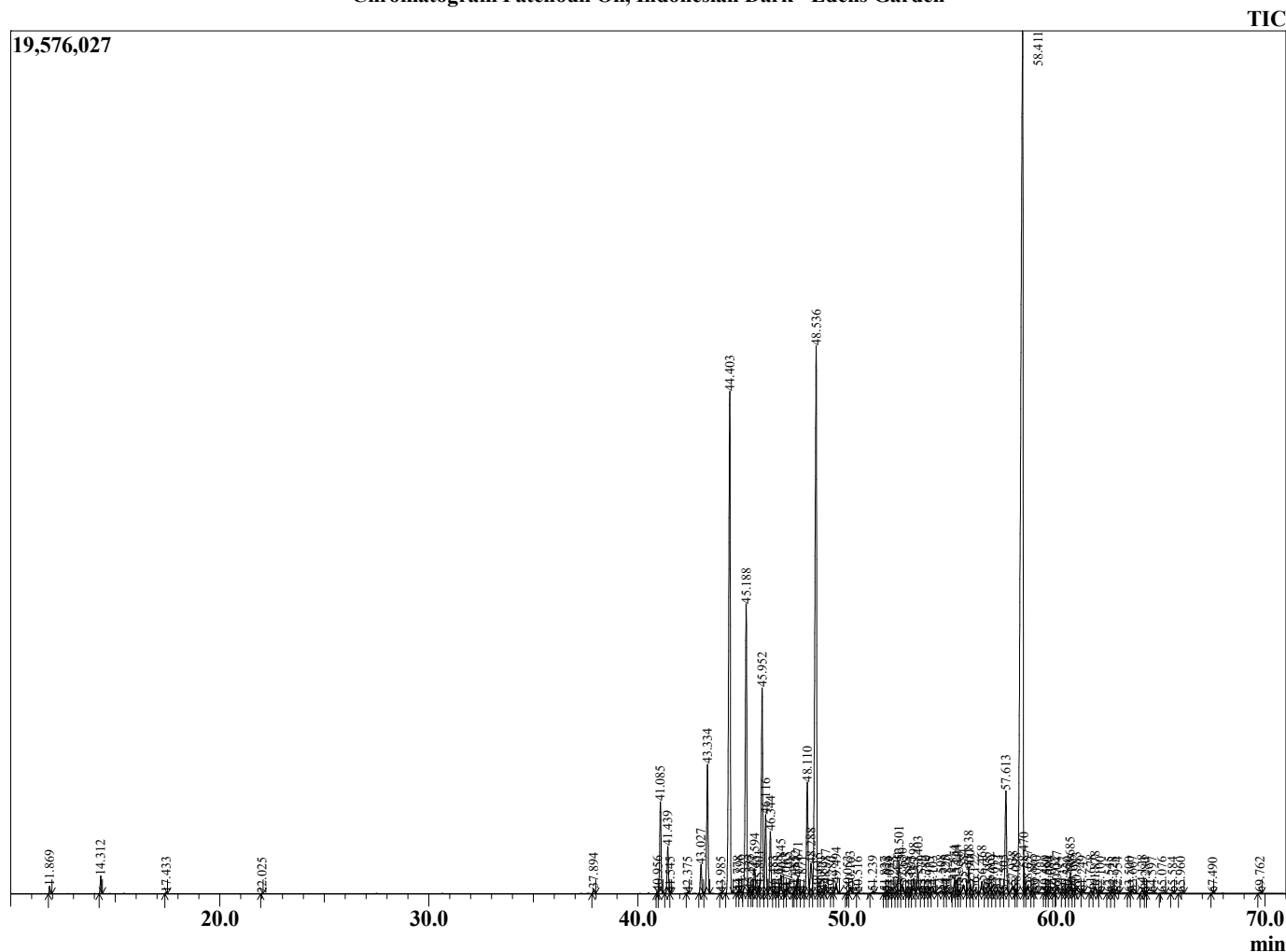
Analyzed by : Dr. Robert S. Pappas  
 Analyzed : 7/13/2022 9:06:17 AM  
 Sample Type : Essential Oil  
 Sample Name : Patchouli Oil, Indonesian Dark - Edens Garden  
 Sample ID : EG Lot #BB12GAR  
 Injection Volume : 0.10  
 Instrument ID : GC-2



Peak Report TIC

R.Time	Name	Area%
11.869	alpha-Pinene	0.11
14.312	beta-Pinene	0.28
17.433	Limonene	0.02
22.025	Linalool	0.01
37.894	delta-Elemene	0.10
40.956	Elemene isomer	0.03
41.085	beta-Pathcoulene	2.03
41.439	beta-Elemene	1.02
41.545	Unidentified	0.01
42.375	cis-beta-Caryophyllene	0.02
43.027	Cycloseychellene	0.64
43.334	trans-beta-Caryophyllene	2.95
43.985	gamma-Elemene	0.01
44.403	alpha-Guaiene	12.89
44.778	Unidentified	0.03
44.896	Selina-5,11-diene analogue	0.04
45.188	Seychellene	6.97
45.333	Selina-5,11-diene	0.06
45.477	Unidentified	0.02
45.594	alpha-Humulene	0.53
45.801	Aristola-1(10),8-diene	0.16
45.952	alpha-Patchoulene	4.79
46.116	9-epi-Caryophyllene isomer	1.72
46.344	Alloaromadendrene	1.40
46.483	Drima-7,9(11)-diene	0.03
46.688	Selina-4,11-diene	0.03
46.845	beta-Chamigrene	0.42
47.063	gamma-Gurjunene	0.09
47.165	Germacrene D	0.13
47.485	Unidentified	0.02
47.552	delta-Selinene	0.15
47.671	beta-Selinene	0.35
47.871	alpha-Selinene	0.03
48.110	Aciphyllene	2.69
48.288	Bulnesene analogue	0.86
48.536	alpha-Bulnesene	15.30
48.615	trans,trans-alpha-Farnesene	0.06
48.821	Unidentified	0.04
48.987	Eremophila-1(10),8,11-triene	0.17
49.280	Cubebol	0.02
49.494	(-)-alpha-Panasinsen	0.26
50.053	Unidentified	0.06
50.163	Nootkatene	0.14
50.516	Unidentified	0.01
51.239	alpha-Elemol	0.04
51.827	Germacrene B	0.02
51.928	Unidentified	0.03
52.029	trans-Nerolidol	0.02
52.225	Unidentified	0.02
52.430	Unidentified	0.06
52.501	Norpatchoulenol	0.71
52.650	Unidentified	0.22
52.898	Spathulenol	0.02
53.095	Unidentified	0.02
53.198	Caryophyllene oxide	0.38
53.403	Spathulenol analogue	0.55
53.579	Unidentified	0.05
53.780	Unidentified	0.03
53.975	Unidentified	0.01
54.103	Unidentified	0.05
54.508	Unidentified	0.07
54.725	Unidentified	0.03

Chromatogram Patchouli Oil, Indonesian Dark - Edens Garden



Comments:

The analysis of this Patchouli Oil, Indonesian Dark batch sample meets the expected chemical profile for authentic essential oil of Pogostemon cablin.

No contamination or adulteration was detected. The results provided in this GCMS quality analysis reflect the chemical composition of the oil and lot referenced above on the date of analysis.

©Copyright 2022 by Essential Oil University. All rights reserved. Any publishing, copying, use, dissemination, or distribution of this report, including online, without the express written permission of Essential Oil University is strictly prohibited.

R.Time	Name	Area%
54.820	Humulene epoxide II	0.06
55.154	Unidentified	0.28
55.244	Unidentified	0.30
55.354	Unidentified	0.08
55.584	Unidentified	0.29
55.838	Unidentified	0.65
55.900	Unidentified	0.16
56.122	Unidentified	0.10
56.468	Pogostol analog	0.34
56.718	Unidentified	0.04
56.852	Intermedeol	0.14
57.019	Unidentified	0.08
57.221	Unidentified	0.09
57.505	Unidentified	0.04
57.613	Pogostol	2.47
57.938	Unidentified	0.28
58.098	Unidentified	0.10
58.411	Patchouli alcohol	33.24
58.470	Valerianol	0.34
58.657	Unidentified	0.20
58.865	Unidentified	0.07
59.080	Unidentified	0.04
59.480	Unidentified	0.02
59.561	Unidentified	0.02
59.680	Unidentified	0.01
59.937	Unidentified	0.03
60.047	Unidentified	0.19
60.357	Unidentified	0.03
60.550	Unidentified	0.02
60.685	Pogostone	0.43
60.785	Pogostone analogue	0.07
60.983	Unidentified	0.19
61.249	Unidentified	0.02
61.678	Unidentified	0.07
61.878	Longifolol	0.17
62.100	Unidentified	0.01
62.545	Unidentified	0.01
62.728	Unidentified	0.03
62.954	Unidentified	0.03
63.500	Unidentified	0.01
63.667	beta-Costol	0.05
64.128	Unidentified	0.07
64.280	Unidentified	0.01
64.597	Unidentified	0.03
65.076	Unidentified	0.03
65.584	Unidentified	0.02
65.960	Unidentified	0.03
67.490	Phytone	0.01
69.762	Unidentified	0.01
		100.00