

Sample Information

Analyzed by : Dr. Robert S. Pappas
 Analyzed : 6/25/2018 7:35:46 PM
 Sample Type : Essential Oil
 Sample Name : Patchouli - Edens Garden
 Sample ID : EH07GB
 Injection Volume : 0.10
 Instrument ID : GC-2

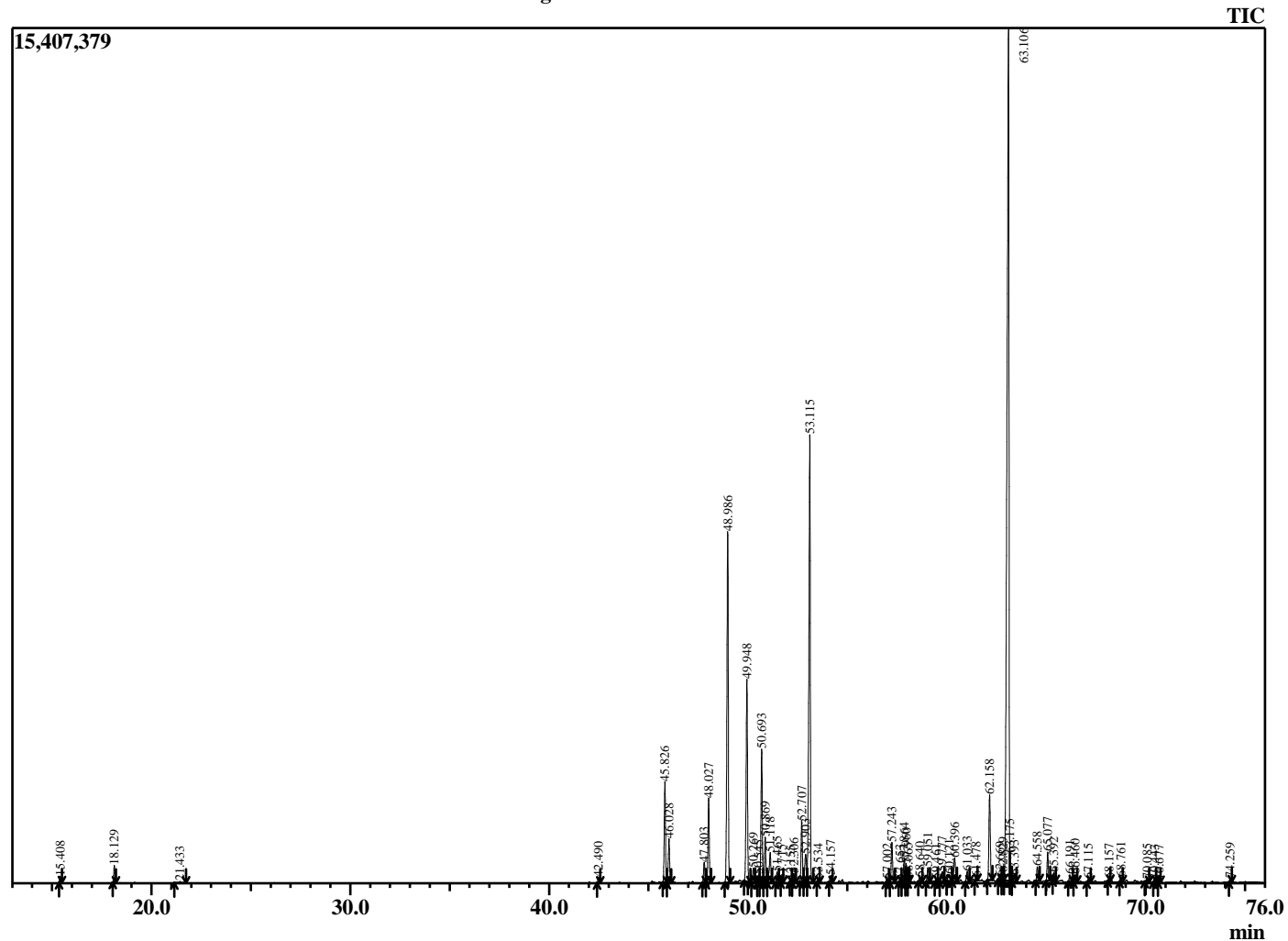


Peak Report TIC

R.Time	Name	Area%
15.408	alpha-Pinene	0.14
18.129	beta-Pinene	0.38
21.433	Limonene	0.04
42.490	delta-Elemene	0.15
45.826	beta-Patchoulene	2.92
46.028	beta-Elemene	1.26
47.803	Cycloseychellene	0.59
48.027	beta-Caryophyllene	2.45
48.986	alpha-Guaiene	10.51
49.948	Seychellene	6.23
50.269	alpha-Humulene	0.42
50.545	Alloaromadendrene	0.20
50.693	alpha-Patchoulene	4.00
50.869	9-epi-Caryophyllene	1.31
51.118	epi-Caryophyllene isomer	1.07
51.465	beta-Chamigrene	0.29
51.715	gamma-Gurjunene	0.05
52.155	delta-Selinene	0.03
52.306	beta-Selinene	0.27
52.707	Aciphyllene	1.87
52.903	Patchouli unidentified	1.11
53.115	delta-Guaiene	14.73
53.534	trans-Cadina-1,4-diene	0.07
54.157	alpha-Panasinsene	0.19
57.002	Patchouli unidentified	0.10
57.243	D Norpatchoulenol	1.23
57.653	Patchouli unidentified	0.07
57.864	Caryophyllene oxide	0.81
57.960	Patchouli unidentified	0.56
58.065	Patchouli unidentified	0.09
58.640	Patchouli unidentified	0.14
59.051	Patchouli unidentified	0.41
59.461	Humulene epoxide II	0.07
59.777	Patchouli unidentified	0.41
60.121	Patchouli unidentified	0.34
60.396	Patchouli unidentified	0.89
61.033	Patchouli unidentified	0.36
61.478	Patchouli unidentified	0.10
62.158	Pogostol	2.68
62.669	Patchouli unidentified	0.18
62.829	Patchouli unidentified	0.26
63.106	Patchouli alcohol	37.85
63.175	Valerianol	0.43
63.393	Patchouli unidentified	0.22
64.558	Patchouli unidentified	0.45
65.077	Pogostone	0.82
65.392	Patchouli unidentified	0.22
66.191	Patchouli unidentified	0.23
66.460	Longifolol	0.21
67.115	Patchouli unidentified	0.09
68.157	Patchouli unidentified	0.06
68.761	Patchouli unidentified	0.12
70.085	Patchouli unidentified	0.10
70.443	Patchouli unidentified	0.06
70.677	Patchouli unidentified	0.05
74.259	Corymbolone	0.10
		100.00

This report is not valid after 1 year of the report date.

Chromatogram Patchouli - Edens Garden



Comments:
 The analysis of this Patchouli batch sample meets the expected chemical profile for authentic essential oil of Pogostemon cablin. No contamination or adulteration was detected.