

Sample Information

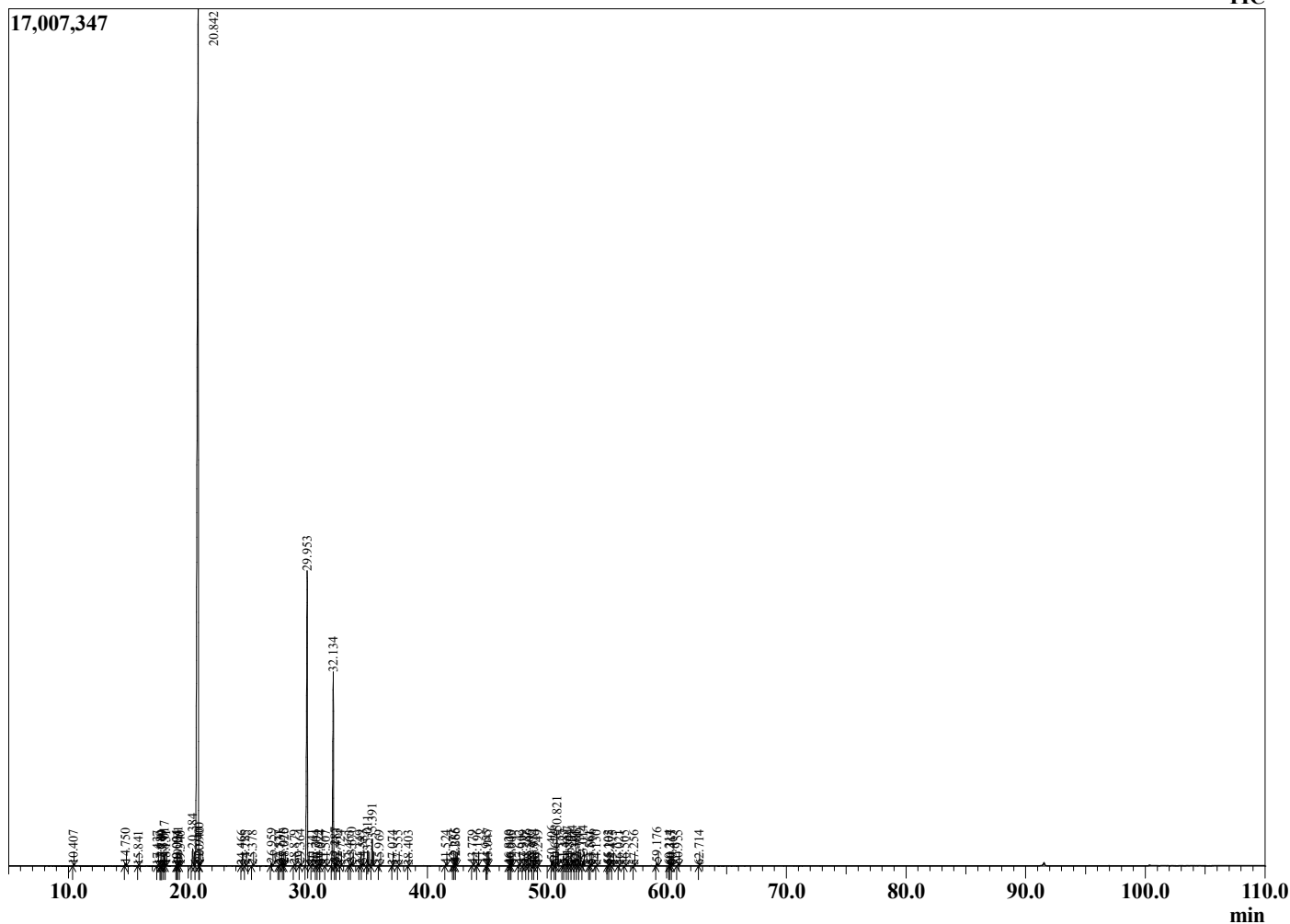
Analyzed by : Dr. Robert S. Pappas
 Analyzed : 3/7/2021 1:59:11 AM
 Sample Type : Essential Oil
 Sample Name : Palo Santo - Edens Garden
 Sample ID : BB22AT
 Injection Volume : 0.10
 Instrument ID : GC-2



Peak Report TIC

R.Time	Name	Area%
10.407	3-Methylcyclopentanone	0.02
14.750	alpha-Pinene	0.08
15.841	3-Methylcyclohexanone	0.01
17.437	Unidentified	0.01
17.680	3-para-Menthene	0.01
17.769	Unidentified	0.03
17.849	Cyclohexyl methyl ketone	0.04
18.017	Myrcene	0.35
18.131	dehydro-1,8-Cineole	0.03
19.034	Pseudolimonene	0.02
19.091	Unidentified	0.02
19.181	alpha-Phellandrene	0.16
19.340	delta-3-Carene	0.01
20.384	para-Cymene	0.82
20.842	Limonene	65.42
20.900	beta-Phellandrene	0.14
20.940	1,8-Cineole	0.08
24.466	Terpinolene	0.01
24.785	para-Cymenene	0.03
25.378	Linalool	0.03
26.959	trans-para-Mentha-2,8-dienol	0.10
27.577	4-Acetyl-1-methylcyclohexene	0.02
27.731	cis-Limonene oxide	0.04
27.975	Unidentified	0.09
28.020	trans-Limonene oxide	0.08
28.879	trans-beta-Terpineol	0.05
29.364	Menthone	0.08
29.953	Menthofuran	15.41
30.341	delta-Terpineol	0.05
30.704	trans-Isopulegone	0.02
30.922	Unidentified	0.07
31.074	Terpinen-4-ol	0.03
31.507	Cryptone	0.03
32.134	alpha-Terpineol	9.96
32.287	(Z)-Dihydrocarvone	0.12
32.413	cis-Piperitol	0.10
32.724	(E)-Dihydrocarvone	0.01
33.463	Unidentified	0.03
33.670	trans-Carveol	0.16
34.349	Unidentified	0.02
34.583	cis-Carveol	0.08
35.011	Pulegone	0.65
35.391	Carvone	1.12
35.969	Unidentified	0.04
37.074	Unidentified	0.01
37.555	Perillaldehyde	0.01
38.403	Unidentified	0.02
41.524	delta-Elementene	0.03
42.177	Unidentified	0.02
42.285	Menthalthalactone isomer	0.13
42.366	Menthalthalactone isomer	0.10
43.779	alpha-Ylangene	0.02
44.196	alpha-Copaene	0.05
44.955	beta-Cubebene	0.02
45.047	beta-Elementene	0.09
46.820	Unidentified	0.02
46.910	beta-Ylangene	0.05
47.005	Unidentified	0.03
47.642	beta-Copaene	0.04
47.999	cis-Thujopsene	0.04
48.286	Menthalthalactone isomer	0.07
48.506	Unidentified	0.02

Chromatogram Palo Santo - Edens Garden



Comments:

The analysis of this Palo Santo batch sample meets the expected chemical profile for authentic essential oil of *Bursera graveolens*. No contamination or adulteration was detected. The results provided in this GCMS quality analysis reflect the chemical composition of the oil and lot referenced above on the date of analysis.

R.Time	Name	Area%
48.831	Unidentified	0.12
48.914	Unidentified	0.06
49.249	alpha-Humulene	0.01
50.406	trans-Cadina-1(6),4-diene	0.21
50.676	alpha-Amorphene	0.03
50.821	Germacrene D	1.61
51.327	Unidentified	0.05
51.487	trans-Murrola-4(14),5-diene	0.09
51.697	Menthylactone	0.20
51.844	alpha-Murolene	0.10
52.104	(E,E)-alpha-Farnesene	0.26
52.366	beta-Bisabolene	0.04
52.481	Cuparene	0.02
52.739	gamma-Cadinene	0.09
53.014	delta-Cadinene	0.22
53.561	Menthylactone isomer	0.02
53.666	Unidentified	0.05
54.130	alpha-Cadinene	0.01
55.102	Unidentified	0.04
55.205	Unidentified	0.02
55.475	Unidentified	0.02
56.021	Unidentified	0.02
56.505	Unidentified	0.02
57.256	Unidentified	0.02
59.176	Humulane-1,6-dien-3-ol	0.14
60.214	tau-Cadinol	0.01
60.317	epi-alpha-Cadinol	0.03
60.465	delta-Cadinol	0.02
60.955	alpha-Cadinol	0.06
62.714	alpha-Bisabolol	0.01
		100.00